

NATSUSHIMA NT12-26 Navigation

Last Modified: 2014-09-05

[ReadMe](#) [Observation Data](#) [Data Format](#)

Cruise ID: [NT12-26](#)

Navigation: Processed (DMO)-QCed

Data Policy: [JAMSTEC](#)

Observation Items:

Science Keywords:

Cruise Report

http://www.godac.jamstec.go.jp/catalog/data/doc_catalog/media/NT12-26_all.pdf

For Using Data

Principal Investigator

Data Management Office

Use Constraints

See [Terms and Conditions](#) about constrain of use.

Data Citation

See [Terms and Conditions](#) about data citation.

Instrument

Instrument:

Radio navigation system



Overview

The following information is continuously collected and recorded as the Navigation QCed data during the cruise of R/V NATSUSHIMA.

Time
Location
Surface temperature
Wind direction and velocity
Current direction and velocity
Water depth

Data are recorded every one minute, and data file named after cruise code.

System

Manufacturer:SENA Co., Ltd.

Model: Sena Advanced Integrated Navigation System

Sensor specifications

1)GPS

Manufacturer: Trimble Navigation Limited (Receiver)
Fugro Survey Limited (D-GPS)

Model: SPS751 (Receiver)
Starfix-XP (D-GPS)

Location: Mast[starboard side]
Mast[port side]

2)Thermometer (seawater temperature)

Manufacturer:Murayama DENKI Ltd.

Model: DT-3110ARZ

Range: -10 - 50degC

Accuracy: +/-0.1degC

3)Doppler sonar

Manufacturer:FURUNO ELECTRIC CO., LTD.

Model: DS-30

Range: Ship speed: -10.00 - +40.00knot [Cross direction]
-9.99 - +9.99knot [Horizontal direction]

Current direction and speed: 0.0 - 9.9knot [All direction]

Accuracy: Current speed: +/- (2.0%+0.2knot)

4)Multi narrow beam echo sounder

Manufacturer:RESON Inc.

Model: SeaBat 8160

Frequency: 50kHz

Range: Max 3000m

5)Anemometer

Manufacturer:Nunotani Nautical Instrument Mfg. Co., Ltd.

Altitude: 20m (above sea level)

Range: Wind direction: all direction

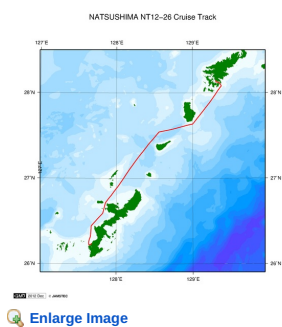
Wind speed: 2 - 60m/s

Accuracy: Wind direction: +/-5degree

Wind speed: 10m/s or less +/-0.5m/s

10m/s or more +/-0.5%

Related Information



NT12-26

Ship Name: NATSUSHIMA

Period: 2012-10-11 - 2012-10-16

Chief Scientist: Hiromo Watanabe (JAMSTEC)

Proposal ▶ Laval dispersal and metapopulation dynamics of hydrothermal vent species in Okinawa

Title: Trough

Update History

2014-09-05	An observation data was registerd.
2012-12-25	An observation data was registerd.

JAMSTEC

[Site Policy](#)
[Privacy Policy](#)
[Application for Data and Samples](#)
[Data Policy](#)

What's New
[Update History](#)
[Feeds](#)

Lists

[Publication List](#)
[Amount of Public Info.](#)

Data

[Map Search](#)
[Data Tree](#)
[Detailed Search](#)

Information of the Ships

NATSUSHIMA
KAIGO
YOKOSUKA
MIRAI
KAIREI
CHIKYU
KAIMEI
SHINSEI MARU
HAKUHO MARU

Information of the Submersibles

KAIKO
SHINKAI 2000
SHINKAI 6500
DEEP TOW
HYPER-DOLPHIN
URASHIMA
YOKOSUKA DEEP TOW
6K Camera DEEP TOW
6K Sonar DEEP TOW
KM-ROV
POWER GRAB SAMPLER (SHELL)
POWER GRAB SAMPLER (CLOW)
BMS

Go to a Cruise Information

Cruise ID:

Go to a Dive Information

Dive ID:

Copyright 2011 Japan Agency for Marine-Earth Science and Technology



JAMSTEC 国立研究開発法人
海洋研究開発機構
JAPAN AGENCY FOR MARINE EARTH SCIENCE AND TECHNOLOGY

NATSUSHIMA NT12-26 Navigation

Last Modified: 2014-09-05

[ReadMe](#) [Observation Data](#) [Data Format](#)

Cruise ID: [NT12-26](#)

Navigation: Processed (DMO)-QCed

Data Policy: [JAMSTEC](#)

Navigation Qced

The one record of this data has 117 bytes of data part and 12 bytes of flag part.

Data part

No.	Column	Content	Format	Unit	Remarks
1	1 - 8	Date	i4,i2,i2		YYYYMMDD (UTC)
2	10 - 15	Time	i2,i2,i2		hhmmss (UTC)
3	17 - 19	Datum	a3		W84:WGS84 TD_:TOKYO DATUM
4	21 - 31	Latitude	i2,x1,f7.4,a1	degree - minute	dd-mm.mmmN(S)
5	33 - 44	Longitude	i3,x1,f7.4,a1	degree - minute	ddd-mm.mmmE(W)
6	46 - 49	Ship speed (Ground)	f4.1	knot	
7	51 - 55	Course (Ground)	f5.1	degree	
8	57 - 60	Ship speed (Water)	f4.1	knot	*1
9	62 - 66	Gyro	f5.1	degree	
10	68 - 72	Air temperature	f5.1	deg-C	
11	74 - 78	Sea surface temperature (SST)	f5.2	deg-C	
12	80 - 85	Atmospheric pressure	f6.1	hPa	Adjusted to the sea surface level
13	87 - 89	Relative humidity	i3	%	
14	91 - 93	True wind direction	i3	degree	Averaged over the previous 6 seconds *2
15	95 - 98	True wind speed	f4.1	m/sec	Averaged over the previous 6 seconds *2 No anemometer height adjustment
16	100 - 106	Depth	f7.1	m	
17	108 - 112	Current direction	f5.1	degree	Calculated value
18	114 - 117	Current speed	f4.1	knot	Calculated value

Flag part

No.	Column	Description	Format	Remarks
19	119	Flag 1	i1	QC flag for 'Latitude' and 'Longitude'
20	120	Flag 2	i1	QC flag for 'Ship speed (Ground)'
21	121	Flag 3	i1	QC flag for 'Course (Ground)'
22	122	Flag 4	i1	QC flag for 'Ship speed (Water)'
23	123	Flag 5	i1	QC flag for 'Gyro'
24	124	Flag 6	i1	QC flag for 'Air temperature'
25	125	Flag 7	i1	QC flag for 'Sea Surface Temperature (SST)'
26	126	Flag 8	i1	QC flag for 'Atmospheric pressure'
27	127	Flag 9	i1	QC flag for 'Relative humidity'
28	128	Flag 10	i1	QC flag for 'Wind direction' and 'Wind speed'
29	129	Flag 11	i1	QC flag for 'Depth'
30	130	Flag 12	i1	QC flag for 'Current direction' and 'Current speed'

*1 The plus and minus sign of No.8 [Ship speed (Water)] about R/V KAIREI indicates the velocity of direction of a bow and stem.

*2 No.14 [True wind direction] and No.15 [True wind speed] about R/V SHINSEI MARU are instantaneous value.

* The terminator of each record is 'CR+LF' code.

* Missing value and format error value are filled with '9'.

Definition of Quality Control Flags

Flag 1 : Longitude and Latitude

- 1 - accepted
- 2 - questionable value
- 4 - failed in location check
- 9 - system error or input error

Flag 2 : Ship speed (ground)

- 1 - accepted
- 2 - questionable value
- 4 - failed range check (under 20 knots)
- 9 - system error or input error

Flag 3 : Course (ground)

- 1 - accepted
- 2 - questionable value
- 4 - failed range check (0 ~ 360 degree)
- 9 - system error or input error

Flag 4 : Ship speed (water)

- 1 - accepted
- 4 - failed range check (under 20 knots)
- 9 - system error or input error

9 - system error or input error

Flag 5 : Gyro

- 1 - accepted
- 4 - failed range check (0 ~ 360 degree)
- 9 - system error or input error

Flag 6 : Air temperature

- 3 - assumed good*
- 4 - failed range check (-20 ~ 40 degC)
- 9 - system error or input error

Flag 7 : Sea surface temperature

- 3 - assumed good*
- 4 - failed range check (-3 ~ 37 degC)
- 9 - system error or input error

Flag 8 : Atmospheric pressure

- 3 - assumed good*
- 4 - failed range check (890 ~ 1040 hPa)
- 9 - system error or input error

Flag 9 : Relative humidity

- 3 - assumed good*
- 4 - failed range check (0 ~ 100 %)
- 9 - system error or input error

Flag 10 : Wind direction and wind speed

- 3 - assumed good*
- 4 - failed range check (0 ~ 360 degree : wind direction, 0 ~ 60 m/s : wind speed)
- 9 - system error or input error

Flag 11 : Depth

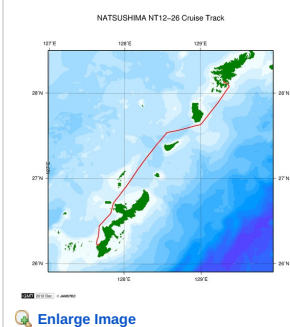
- 3 - assumed good*
- 4 - failed range check (4 ~ 11000 m)
- 9 - system error or input error

Flag 12 : Current direction and current speed

- 3 - assumed good*
- 4 - failed range check (0 ~ 360 degree : current direction, 0 ~ 5 knots : current speed)
- 9 - system error or input error

* 'assumed good' means that this data passed range check but may contains leap or inappropriate zero.

Related Information



NT12-26

Ship Name: NATSUSHIMA
Period: 2012-10-11 - 2012-10-16
Chief Scientist: Hiromo Watanabe (JAMSTEC)
Proposal ▶ Laval dispersal and metapopulation dynamics of hydrothermal vent species in Okinawa
Title: Trough

Update History

2014-09-05	An observation data was registerd.
2012-12-25	An observation data was registerd.

JAMSTEC

Site Policy
Privacy Policy
Application for Data and Samples
Data Policy

What's New
Update History
Feeds

Lists

Publication List
Amount of Public Info.
Data
Map Search
Data Tree
Detailed Search

Information of the Ships

NATSUSHIMA
KAIYO
YOKOSUKA
MIRAI
KAIREI
CHIKYU
KAIMEI
SHINSEI MARU
HAKUHO MARU

Information of the Submersibles

KAIKO
SHINKAI 2000
SHINKAI 6500
DEEP TOW
HYPER-DOLPHIN
URASHIMA
YOKOSUKA DEEP TOW
6K Camera DEEP TOW
6K Sonar DEEP TOW
KM-ROV
POWER GRAB SAMPLER (SHELL)
POWER GRAB SAMPLER (CLOW)
BMS

Go to a Cruise Information

Cruise ID:

Go to a Dive Information

Dive ID:



NATSUSHIMA NT12-26 Navigation

Last Modified: 2014-09-05

[ReadMe](#) [Observation Data](#) [Data Format](#)

Cruise ID: **NT12-26**

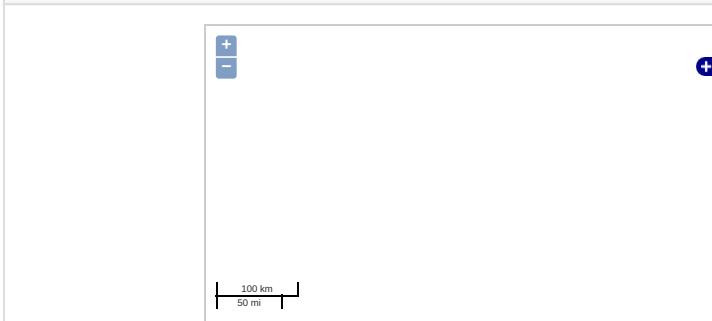
Navigation: Processed (DMO)-QCed

Data Policy: [JAMSTEC](#)

Observation Items:

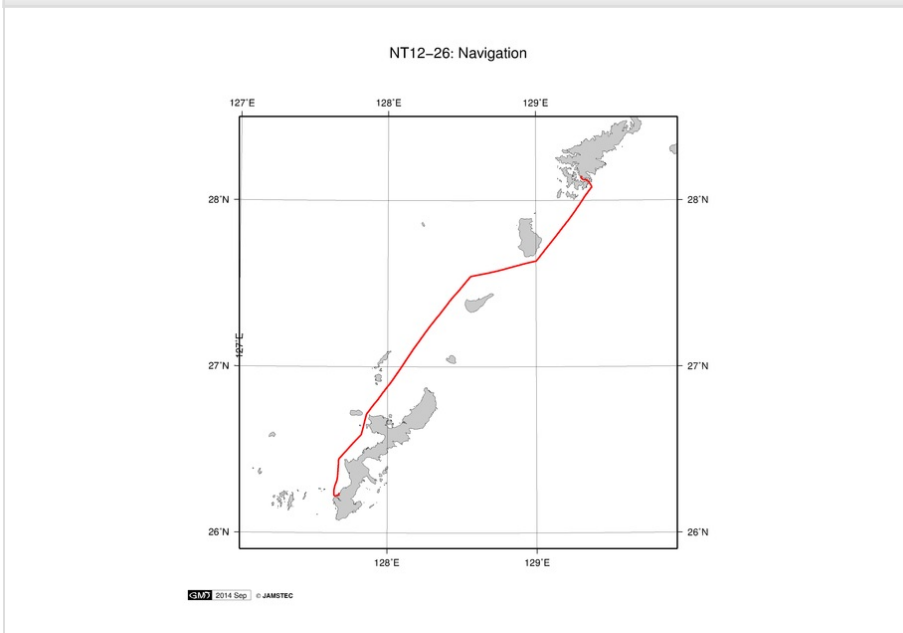
Science Keywords:

Observation Map



... Observation Line ... Navigation ... Observation, Dive Point, Hole

Figures



Data List

[Add to Basket](#)

File names

☐ NT12-26.dat

Related Information

NT12-26
Ship Name: NATSUSHIMA
Period: 2012-10-11 - 2012-10-16
Chief Scientist: Hiromi Watanabe (JAMSTEC)
Proposal: ▶ Laval dispersal and metapopulation dynamics of hydrothermal vent species in Okinawa
Title: Trough

[Enlarge Image](#)

Update History

2014-09-05 An observation data was registered.
2012-12-25 An observation data was registered.

JAMSTEC

Site Policy

Privacy Policy

Application for Data and Samples

Data Policy

What's New

Update History

Feeds

Lists

Publication List

Amount of Public Info.

Data

Map Search

Data Tree

Detailed Search

Information of the Ships

NATSUSHIMA

KAIYO

YOKOSUKA

MIRAI

KAIREI

CHIKYU

KAIMEI

SHINSEI MARU

HAKUHO MARU

Information of the

Submersibles

KAIKO

SHINKAI 2000

SHINKAI 6500

DEEP TOW

HYPER-DOLPHIN

URASHIMA

YOKOSUKA DEEP TOW

6K Camera DEEP TOW

6K Sonar DEEP TOW

KM-ROV

POWER GRAB SAMPLER

(SHELL)

POWER GRAB SAMPLER

(CLOW)

BMS

Go to a Cruise Information

Cruise ID:

Go

Go to a Dive Information

Dive ID:



Go

Copyright 2011 Japan Agency for Marine-Earth Science and Technology



JAMSTEC

国立研究開発法人
海洋研究開発機構

JAPAN AGENCY FOR MARINE-EARTH SCIENCE AND TECHNOLOGY