

## KAIREI KR07-12 Gravity

Last Modified: 2019-07-06

[ReadMe](#) [Observation Data](#) [Data Format](#)

Cruise ID: [KR07-12](#)

Gravity: Processed (DMO)-Corrected

Data Policy: [JAMSTEC](#)

Observation Items: Absolute gravity

Science Keywords:

OCEANS > MARINE GEOPHYSICS > MARINE GRAVITY FIELD  
SOLID EARTH > GEODETICS/GRAVITY > GRAVITY

### Cruise Report

[http://www.godac.jamstec.go.jp/catalog/data/doc\\_catalog/media/KR07-12\\_all.pdf](http://www.godac.jamstec.go.jp/catalog/data/doc_catalog/media/KR07-12_all.pdf)

#### For Using Data

##### Principal Investigator

Data Management Office

##### Use Constraints

See [Terms and Conditions](#) about constrain of use.

##### Data Citation

See [Terms and Conditions](#) about data citation.

### Period (UTC)

2007-09-09 01:15 – 2007-09-25 04:37

### Instrument

Instrument:

Shipboard gravimeter ( - KR16-07)



Instrument:

Microgravimeter ( - KR07-18)



### Overview

The data provided here are quality-controlled absolute gravity data and free-air anomalies. The absolute gravity data are a combination of relative gravity data measured by the shipboard gravity meter and the absolute gravity data of the ports in departure and arrival. Drift corrections and the Eotvos corrections were done before converting into absolute gravity. As a quality control, low reliability data were removed (see section 6. for the judging criteria). The absolute gravity values of the ports are referenced to those of the Japan Gravity Standardization Net of the Geographical Survey Institute of Japan.

### Measurement System

#### (1) Shipboard gravity meter

The system consists of two main assemblies; the gyro-stabilized platform including the gravity sensor and the data handling & control system.

Manufacturer : BODENSEWERK  
Model : KSS 31  
Measuring range : 10,000 mGal  
Accuracy : 1.0 mGal  
Drift rate : < 3.0 mGal/month  
Installation : Gravity meter room

Reference:"INSTRUCTION MANUAL for MARINE/AIR GRAVITYMETER SYSTEM KSS 31", Bodenseewerk 1996

#### (2) Portable gravity meter

The portable gravity meter consists of two modules; the data acquisition/control module and the gravity sensor module. The gravity sensor is enclosed in a thermostatically controlled vacuum chamber. The portable gravity meter is used to calculate the absolute gravity of the port with reference to the gravity station of the Japan Gravity Standardization Net of the Geographical Survey Institute of Japan.

Manufacturer : SCINTREX  
Model : CG-3M  
Measurement range : 7,000 mGal  
Standard deviation : 0.01 mGal  
Drift rate : < 0.02 mGal/day

Reference:"CG-3M AUTOGRAV AUTOMATED GRAVITY METER OPERATOR MANUAL", SCINTREX

### Absolute gravity in Ports

| Date (UTC)          | Port             | Absolute gravity (mGal) | Sea level (cm) | Draft shipboard (cm) | Absolute gravity at sensor position (mGal) | Reading of shipboard gravity meter (mGal) |
|---------------------|------------------|-------------------------|----------------|----------------------|--|---|
| 2007/09/08 22:37:14 | YOKOSUKA/JAMSTEC | 979758.34               | 320            | 450                  | 979759.14                                  | -1459.9                                   |
| 2007/09/25 06:45:53 | YOKOSUKA/JAMSTEC | 979758.35               | 220            | 460                  | 979758.87                                  | -1460.5                                   |

\* see [Term description](#)

### Data processing

According to the filter process of the gravity meter system, the gravity data has a time lag of 103 seconds between the measurement and its output. After adjustment of this lag time, the following corrections and calculations were performed.

#### (1) Drift correction

$$D = ((Vg-Vgs)-(Age-Ags))/(Te-Ts)$$

D: Drift value (mGal/day)

Vgs: The shipboard gravity at the start of the cruise (mGal)

Vge: The shipboard gravity at the end of the cruise (mGal)

Ags: The absolute gravity at the shipboard sensor position at the start of the cruise (mGal)

Age: The absolute gravity at the shipboard sensor position at the end of the cruise (mGal)

Ts: The start time of the cruise (day)

Te: The end time of the cruise (day)

## (2) Eotvoes correction

$$E = 7.503 \times S^2 \times \cos(\varphi) \times \sin(\alpha) + 0.004154 \times S^2$$

E: Eotvoes correction (mGal)

S: Ground speed of the ship (knot)

$\varphi$ : Latitude (radian)

$\alpha$ : Course of the ship (radian, measured clockwise from the north)

Reference: Blakely, R.J., Potential theory in gravity & magnetic applications, Cambridge University Press, New York, 441pp, 1995

\* The navigation data such as S,  $\varphi$  and  $\alpha$  are the 4-min average values. Before average processing, following data were removed from each dataset. If the number of data used for a 4-min average calculation did not include more than 50% of good data, the processed average value was considered as a missing value.

- Time error (inversion of time, continuation of same timestamps)
- Ship speed exceeding 20knot
- Course of the ship except 0-360°

## (3) Calculation of the absolute gravity

$$G = Ags + (Vg - Vgs) \cdot D \cdot (T - Ts) + E + H \cdot \beta$$

G: The absolute gravity at sea surface (mGal)

Ags: The absolute gravity at the shipboard sensor position at the start of the cruise (mGal)

Vgs: The shipboard gravity at the start of the cruise (mGal)

Vg: The shipboard gravity at the measurement time (mGal)

D: Drift value (mGal/day)

Ts: The start time of the cruise (day)

T: The measurement time (day)

E: Eotvoes correction (mGal)

H: Height from sea surface of the shipboard sensor position (m)

$\beta$ : Free-air gradient 0.3086 (mGal/m)

## (4) Calculation of the Free-air anomaly

$$Gf = G - \gamma + \delta$$

Gf: The Free-air anomaly (mGal)

G: Absolute gravity at sea surface (mGal)

$\gamma$ : Normal gravity (mGal)

\* The normal gravity formula of the Geodetic Reference System 1980

$$\gamma = 978032.67715(1 + 0.0052790414 \sin^2 \varphi + 0.0000232718 \sin^4 \varphi + 0.0000001262 \sin^6 \varphi + 0.0000000007 \sin^8 \varphi)$$

$\delta$ : Atmospheric correction at sea surface

$$\delta = 0.87 - 0.0000965 \times 0 \text{ (mGal)}$$

## (5) Output of the data

Time (UTC)

Latitude (degree)

Longitude (degree)

Processed absolute gravity at sea surface (mGal)

Free-air anomaly (mGal)

## Quality control of data

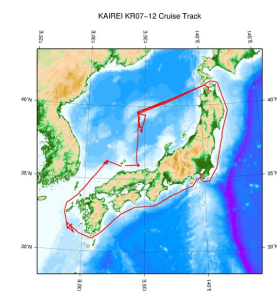
Following criteria were used for removal of low reliability data:

- Abrupt free-air anomaly change exceeding 10mGal/km
- Change in Eotvoes correction exceeding 3mGal/min
- Ground speed of the ship below 3knot

## Note

- (1) File naming rule: Cruise ID\_corr.grv
- (2) Sampling rate: ten seconds
- (3) Geodetic system: WGS84
- (4) If you would like the raw data set, please contact us from "Contact Us" above.

## Related Information



[Enlarge Image](#)

## KR07-12

Ship Name: KAIRESI

Period: 2007-09-09 - 2007-09-25

Chief Scientist: Ryuji Tada (The University of Tokyo)

## Update History

|            |                                     |
|------------|-------------------------------------|
| 2019-07-06 | An observation data was registered. |
| 2014-09-23 | An observation data was registered. |
| 2012-10-26 | An observation data was registered. |

JAMSTEC  
Site Policy  
Privacy Policy  
Application for Data and Samples  
Data Policy

What's New  
Update History  
Feeds

Lists  
Publication List  
Amount of Public Info.  
  
Data  
Map Search  
Data Tree  
Detailed Search

Information of the Ships  
NATSUSHIMA  
KAIYO  
YOKOSUKA  
MIRAI  
KAIREI  
CHIKYU  
KAIMEI  
SHINSEI MARU  
HAKUHO MARU

Information of the Submersibles  
KAIKO  
SHINKAI 2000  
SHINKAI 6500  
DEEP TOW  
HYPER-DOLPHIN  
URASHIMA  
YOKOSUKA DEEP TOW  
6K Camera DEEP TOW  
6K Sonar DEEP TOW  
KM-ROV  
POWER GRAB SAMPLER (SHELL)  
POWER GRAB SAMPLER (CLOW)  
BMS

Go to a Cruise Information

Cruise ID:

Go to a Dive Information

Dive ID:

Copyright 2011 Japan Agency for Marine-Earth Science and Technology



**JAMSTEC** 国立研究開発法人  
海洋研究開発機構  
JAPAN AGENCY FOR MARINE-EARTH SCIENCE AND TECHNOLOGY

## KAIREI KR07-12 Gravity

Last Modified: 2019-07-06

[ReadMe](#) [Observation Data](#) [Data Format](#)

Cruise ID: [KR07-12](#)

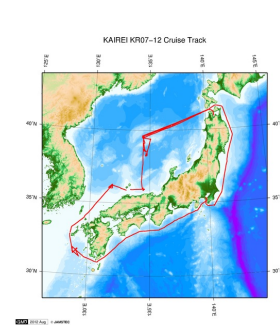
Gravity: Processed (DMO)-Corrected

Data Policy: [JAMSTEC](#)

### Gravity Corrected

| No. | Column | Content          | Format   | Unit   | Remarks   |
|-----|--------|------------------|----------|--------|---|
| 1   | 1 - 8  | Date             | i4,i2,i2 |        | YYYYMMDD (UTC)  |
| 2   | 10 -15 | Time             | i2,i2,i2 |        | hhmmss (UTC)  |
| 3   | 17 -25 | Latitude         | f9.5     | degree | No sign for the northern hemisphere.<br>Negative for the southern hemisphere. |
| 4   | 27 -36 | Longitude        | f10.5    | degree | No sign for eastern hemisphere.<br>Negative for the western hemisphere.       |
| 5   | 38 -45 | Absolute gravity | f8.1     | mGal   |   |
| 6   | 48 -53 | Free-air anomaly | f6.1     | mGal   |   |

### Related Information



[Enlarge Image](#)

#### KR07-12

Ship Name: KAIKEI

Period: 2007-09-09 - 2007-09-25

Chief Scientist: Ryuji Tada (The University of Tokyo)

### Update History

|            |                                    |
|------------|------------------------------------|
| 2019-07-06 | An observation data was registerd. |
| 2014-09-23 | An observation data was registerd. |
| 2012-10-26 | An observation data was registerd. |

#### JAMSTEC

[Site Policy](#)  
[Privacy Policy](#)  
[Application for Data and Samples](#)  
[Data Policy](#)

[What's New](#)  
[Update History](#)  
[Feeds](#)

#### Lists

[Publication List](#)  
[Amount of Public Info.](#)

#### Data

[Map Search](#)  
[Data Tree](#)  
[Detailed Search](#)

#### Information of the Ships

NATSUSHIMA  
KAIYO  
YOKOSUKA  
MIRAI  
KAIREI  
CHIKYU  
KAIMEI  
SHINSEI MARU  
HAKUHO MARU

#### Information of the Submersibles

KAIKO  
SHINKAI 2000  
SHINKAI 6500  
DEEP TOW  
HYPER-DOLPHIN  
URASHIMA  
YOKOSUKA DEEP TOW  
6K Camera DEEP TOW  
6K Sonar DEEP TOW  
KM-ROV  
POWER GRAB SAMPLER (SHELL)  
POWER GRAB SAMPLER (CLOW)  
BMS

#### Go to a Cruise Information

Cruise ID:

#### Go to a Dive Information

Dive ID:



## KAIREI KR07-12 Gravity

Last Modified: 2019-07-06

[ReadMe](#) [Observation Data](#) [Data Format](#)

Cruise ID: [KR07-12](#)

Gravity: Processed (DMO)-Corrected

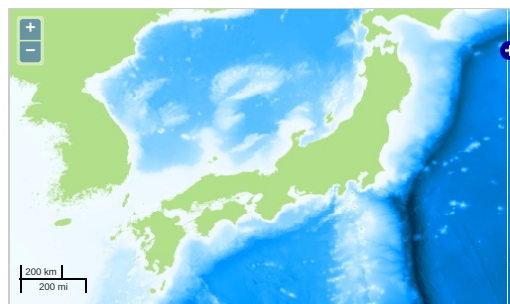
Data Policy: [JAMSTEC](#)

Observation Items: Absolute gravity

Science Keywords:

OCEANS > MARINE GEOPHYSICS > MARINE GRAVITY FIELD  
SOLID EARTH > GEODETICS/GRAVITY > GRAVITY

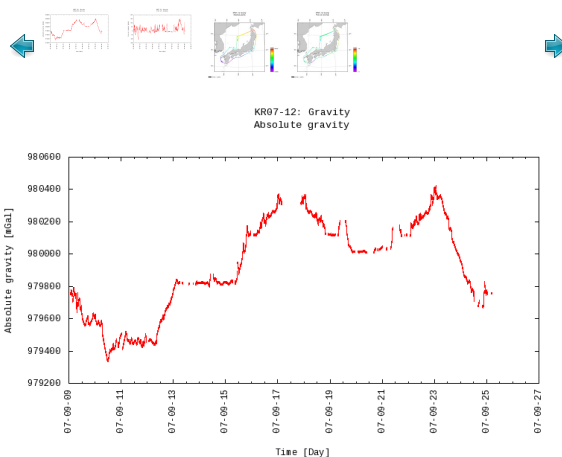
### Observation Map



— ... Observation Line — ... Navigation ● ... Observation, Dive Point, Hole

Imagery reproduced from ...

### Figures



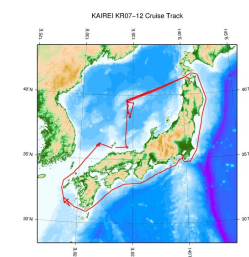
### Data List

[Add to Basket](#)

File names

☐ KR07-12\_corr.grv

### Related Information



[Enlarge Image](#)

**KR07-12**

Ship Name: KAREI

Period: 2007-09-09 - 2007-09-25

Chief Scientist: Ryuji Tada (The University of Tokyo)

### Update History

|            |                                     |
|------------|-------------------------------------|
| 2019-07-06 | An observation data was registered. |
| 2014-09-23 | An observation data was registered. |
| 2012-10-26 | An observation data was registered. |

Application for Data and  
Samples

Data Policy

What's New

Update History

Feeds

Data

Map Search

Data Tree

Detailed Search

YOKOSUKA

MIRAI

KAIREI

CHIKYU

KAIMEI

SHINSEI MARU

HAKUHO MARU

SHINKAI 2000

SHINKAI 6500

DEEP TOW

HYPER-DOLPHIN

URASHIMA

YOKOSUKA DEEP TOW

6K Camera DEEP TOW

6K Sonar DEEP TOW

KM-ROV

POWER GRAB SAMPLER

(SHELL)

POWER GRAB SAMPLER

(CLOW)

BMS

Cruise ID:

Go

Go to a Dive Information

Dive ID:

Go

Copyright 2011 Japan Agency for Marine-Earth Science and Technology



**JAMSTEC**

国立研究開発法人  
海洋研究開発機構

JAPAN AGENCY FOR MARINE-EARTH SCIENCE AND TECHNOLOGY