

## KAIREI KR15-11 Leg3 Shipboard Three Component Magnetometer (STCM)

Last Modified: 2018-03-15

[ReadMe](#) [Observation Data](#) [Data Format](#)

Cruise ID: [KR15-11 Leg3](#)

Shipboard Three Component Magnetometer (STCM): Processed (DMO)-Corrected

Data Policy: [JAMSTEC](#)

Observation Items: X, Y and Z component of geomagnetic field anomaly, Absolute value of geomagnetic field anomaly

Science Keywords:

OCEANS > MARINE GEOPHYSICS > MARINE MAGNETICS  
SOLID EARTH > GEOMAGNETISM

Cruise Report

[http://www.godac.jamstec.go.jp/catalog/data/doc\\_catalog/media/KR15-11\\_leg3\\_all.pdf](http://www.godac.jamstec.go.jp/catalog/data/doc_catalog/media/KR15-11_leg3_all.pdf)

### For Using Data

#### Principal Investigator

Data Management Office

#### Use Constraints

See [Terms and Conditions](#) about constrain of use.

#### Data Citation

See [Terms and Conditions](#) about data citation.

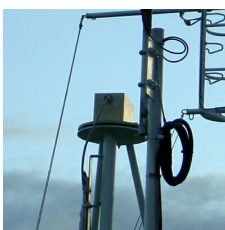
### Period (UTC)

2015-07-31 15:06 – 2015-08-16 14:58

### Instrument

Instrument:

3 component magnetometer



### Overview

The data provided is for corrected three component geomagnetic field anomalies. Three-axes flux-gate sensors with ring-cored coils were fixed on the roof of the bridge.

They measure the following items :

h-component : along track line component, positive for the bow direction pitch.

s-component : across track line component, positive for the starboard side roll.

v-component : vertical component, positive for the downward direction.

The effect of ship motion was eliminated by roll and pitch data which was provided by a tilt sensor. The apparent magnetic influence can be detected through a "Figure of 8 turn"(a pair of clockwise and anti-clockwise turns) on each cruise. If no Figure of 8 turn on the cruise was completed, the latest Figure of 8 turn from the previous cruise was applied. As a quality control, data of low reliability was removed (see Data processing for quality control criteria). Synthetic geomagnetic field values were calculated from IGRF models.

### Measurement System

#### (1) Magnetometer

Manufacturer : Tierra Technica Ltd.

Type : SFG1214

Measurement range :  $\pm 100,000$  nT

Accuracy : less than 100 nT

Resolution : 1 nT

Location : No.2 Laboratory (Dry laboratory)

#### (2) Magnetic Sensor

Manufacturer : Tierra Technica Ltd.

Form : flux-gate sensors with ring-cored coils

Location : Compass deck

#### (3) Attitude sensor and Gyro compass

Manufacturer : IXBLUE

Type : OCTANS

Measurement range :  $\pm 180$  degree(Roll),  $\pm 90$  degree(Pitch), 0 to +360 degree(Gyro)

Accuracy(Roll, Pitch) : 0.01 degree

Accuracy(Gyro) : 0.05 degree \*Secant(Lat.)

Location : Tank top(on the bottom of ship)

### Duration of the Figure of 8 turn

In KR15-11\_leg3 cruise

Date (UTC)

2015-07-31 20:21:00 - 2015-07-31 20:42:00

2015-08-15 03:27:00 - 2015-08-15 03:47:00

### Data processing

The following corrections and calculations were performed.

(1) Ship magnetization correction

$$Hob = ARPYF + Hp \text{ ---(i)}$$

Hob: Observed magnetic field vector (Ship coordinates)

A: Effect of induced magnetization of the ship

R: Matrix of rotation due to the roll

P: Matrix of rotation due to the pitch

Y: Matrix of rotation due to the heading

F: Geomagnetic field vector

Hp: Ship's permanent magnetic moment

Following the equation(i), we calculate the geomagnetic field F.

$$RPYF = BHob + Hbp \text{ ---(ii)}$$

B: coefficient of Figure of 8 turn

Hbp: Permanent magnetic field vector of the ship

Reference: Isezaki,N., A new shipboard three-component magnetometer, GEOPHYSICS. VOL.51,NO10(1986);P1992-1998

(2) International Geomagnetic Reference Field (IGRF)

Synthetic geomagnetic field values are calculated from IGRF 12th Generation models by using navigation data ; latitude, longitude and date.

Reference: IAGA Division V-MOD Geomagnetic Field Modeling[<http://www.ngdc.noaa.gov/IAGA/vmod/igrf.html>]

(3) Calculation of the geomagnetic field anomaly

$$An = F - Figrf$$

An: Geomagnetic field anomaly vector

F: Geomagnetic field vector

Figrf: Synthetic geomagnetic field vector from IGRF

(4) Quality control of data

Following criteria were used for removal of data of low reliability:

- Time error (inversion of time, continuation of same timestamps)
- Summation of the difference of heading by one second exceeding 20 degree per 5 minutes
- Ground speed of the ship below 3knot or exceeding 20knot
- X, Y, or Z component of geomagnetic field anomaly exceeding  $\pm 4000nT$

(5) Filtering of the geomagnetic field anomaly

Due to the residual undulation of the ship, a 120 second length Gaussian filter was applied for each component of the geomagnetic field anomaly data.

(6) Output of the data

Time (UTC)

Latitude (degree)

Longitude (degree)

X: Northward (positive on the north) component of geomagnetic field anomaly (nT)

Y: Eastward (positive on the east) component of geomagnetic field anomaly (nT)

Z: Vertical (positive for downward) component of geomagnetic field anomaly (nT)

T: Absolute value of geomagnetic field anomaly (nT)

**Coefficient of the Figure of 8 turn and Permanent magnetic field vector of the ship**

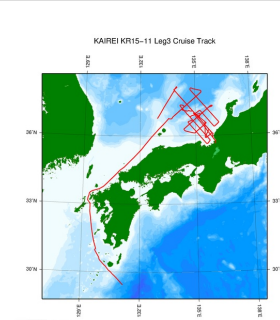
This coefficient was calculated from the above-mentioned Figure of 8 turn

	1.0864	0.0749	0.0887		-6894.8182
B=	-0.0663	1.2973	-0.2640	Hbp=	8281.6008
	-0.0251	0.0043	0.8538		-7100.9091

**Note**

- (1) File naming rule: Cruise ID\_corr.stcm
- (2) Sampling rate: 10 seconds
- (3) Geodetic system: WGS84
- (4) If you would like the raw data set, please contact us from "Contact Us" above.

**Related Information**



[Enlarge Image](#)

**KR15-11 Leg3**

Ship Name: KAIREI

Period: 2015-07-31 - 2015-08-16

Chief Scientist: Tetsuo No (JAMSTEC)

Project Name: [Research project for earthquake and disaster prevention in the wide area around the Nankai Trough]

Proposal ▶ Research project for compound disaster mitigation on the great earthquakes and tsunamis around the Nankai trough region

**Update History**

2018-03-15	An observation data was registerd.
2017-08-24	An observation data was registerd.
2016-03-07	An observation data was registerd.

JAMSTEC  
Site Policy  
Privacy Policy  
Application for Data and  
Samples  
Data Policy

What's New  
Update History  
Feeds

Lists  
Publication List  
Amount of Public Info.

Data  
Map Search  
Data Tree  
Detailed Search

Information of the Ships  
NATSUSHIMA  
KAIYO  
YOKOSUKA  
MIRAI  
KAIREI  
CHIKYU  
KAIMEI  
SHINSEI MARU  
HAKUHO MARU

Information of the  
Submersibles  
KAIKO  
SHINKAI 2000  
SHINKAI 6500  
DEEP TOW  
HYPER-DOLPHIN  
URASHIMA  
YOKOSUKA DEEP TOW  
6K Camera DEEP TOW  
6K Sonar DEEP TOW  
KM-ROV  
POWER GRAB SAMPLER  
(SHELL)  
POWER GRAB SAMPLER  
(CLOW)  
BMS

Go to a Cruise Information

Cruise ID:

Go to a Dive Information

Dive ID:

Copyright 2011 Japan Agency for Marine-Earth Science and  
Technology



**JAMSTEC** 国立研究開発法人  
海洋研究開発機構  
JAPAN AGENCY FOR MARINE-EARTH SCIENCE AND TECHNOLOGY

## KAIREI KR15-11 Leg3 Shipboard Three Component Magnetometer (STCM)

Last Modified: 2018-03-15

[ReadMe](#) [Observation Data](#) [Data Format](#)

Cruise ID: [KR15-11 Leg3](#)

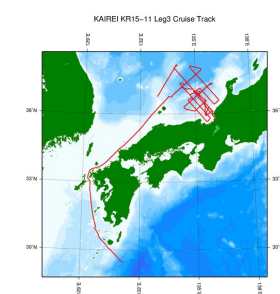
Shipboard Three Component Magnetometer (STCM): Processed (DMO)-Corrected

Data Policy: [JAMSTEC](#)

### STCM Corrected

No.	Column	Content	Format	Unit	Remarks
1	1 - 8	Date	i4,i2,i2		YYYYMMDD (UTC)
2	10 -15	Time	i2,i2,i2		hhmmss (UTC)
3	17 -25	Latitude	f9.5	degree	No sign for the northern hemisphere. Negative for the southern hemisphere.
4	27 -36	Longitude	f10.5	degree	No sign for eastern hemisphere. Negative for the western hemisphere.
5	38 -43	X component of geomagnetic field anomaly	f6.0	nT	Positive on the north
6	45 -50	Y component of geomagnetic field anomaly	f6.0	nT	Positive on the east
7	52 -57	Z component of geomagnetic field anomaly	f6.0	nT	Positive for downward
8	59 -64	Absolute value of geomagnetic field anomaly	f6.0	nT	

### Related Information



[Enlarge Image](#)

#### KR15-11 Leg3

Ship Name: KAIKEI

Period: 2015-07-31 - 2015-08-16

Chief Scientist: Tetsuo No (JAMSTEC)

Project Name: [Research project for earthquake and disaster prevention in the wide area around the Nankai Trough]

Proposal ▶ Research project for compound disaster mitigation on the great earthquakes and tsunamis around the Nankai trough region

### Update History

2018-03-15	An observation data was registered.
2017-08-24	An observation data was registered.
2016-03-07	An observation data was registered.

#### JAMSTEC

[Site Policy](#)  
[Privacy Policy](#)  
[Application for Data and Samples](#)  
[Data Policy](#)  
[What's New](#)  
[Update History](#)  
[Feeds](#)

#### Lists

[Publication List](#)  
[Amount of Public Info.](#)  
  
[Data](#)  
[Map Search](#)  
[Data Tree](#)  
[Detailed Search](#)

#### Information of the Ships

[NATSUSHIMA](#)  
[KAIYO](#)  
[YOKOSUKA](#)  
[MIRAI](#)  
[KAIREI](#)  
[CHIKYU](#)  
[KAIMEI](#)  
[SHINSEI MARU](#)  
[HAKUHO MARU](#)

#### Information of the Submersibles

[KAIKO](#)  
[SHINKAI 2000](#)  
[SHINKAI 6500](#)  
[DEEP TOW](#)  
[HYPER-DOLPHIN](#)  
[URASHIMA](#)  
[YOKOSUKA DEEP TOW](#)  
[6K Camera DEEP TOW](#)  
[6K Sonar DEEP TOW](#)  
[KM-ROV](#)  
[POWER GRAB SAMPLER \(SHELL\)](#)  
[POWER GRAB SAMPLER \(CLOW\)](#)  
[BMS](#)

#### Go to a Cruise Information

Cruise ID:

#### Go to a Dive Information

Dive ID:



## KAIREI KR15-11 Leg3 Shipboard Three Component Magnetometer (STCM)

Last Modified: 2018-03-15

[ReadMe](#) [Observation Data](#) [Data Format](#)

Cruise ID: **KR15-11 Leg3**

Shipboard Three Component Magnetometer (STCM): Processed (DMO)-Corrected

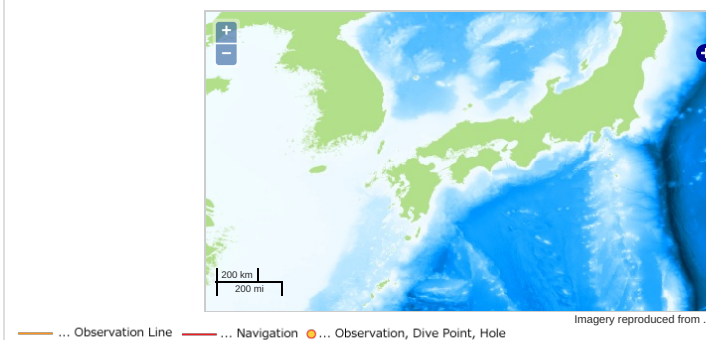
Data Policy: [JAMSTEC](#)

Observation Items: X, Y and Z component of geomagnetic field anomaly, Absolute value of geomagnetic field anomaly

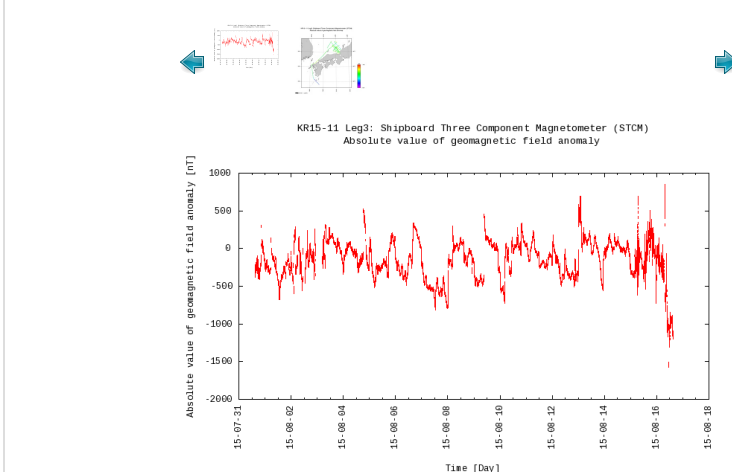
Science Keywords:

OCEANS > MARINE GEOPHYSICS > MARINE MAGNETICS  
SOLID EARTH > GEOMAGNETISM

### Observation Map



### Figures



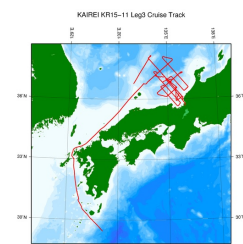
### Data List

[Add to Basket](#)

File names

☐ KR15-11\_leg3\_corr.stcm

### Related Information



[Enlarge Image](#)

#### KR15-11 Leg3

Ship Name: KAIKEI

Period: 2015-07-31 - 2015-08-16

Chief Scientist: Tetsuo No (JAMSTEC)

Project Name: [Research project for earthquake and disaster prevention in the wide area around the Nankai Trough]

Proposal ▶ Research project for compound disaster mitigation on the great earthquakes and tsunamis around the Nankai trough region

Title:

### Update History

2018-03-15	An observation data was registered.
2017-08-24	An observation data was registered.
2016-03-07	An observation data was registered.

Privacy Policy  
Application for Data and  
Samples  
Data Policy  
  
What's New  
Update History  
Feeds

Amount of Public Info.  
  
Data  
Map Search  
Data Tree  
Detailed Search

KAIYO  
YOKOSUKA  
MIRAI  
KAIREI  
CHIKYU  
KAIMEI  
SHINSEI MARU  
HAKUHO MARU

KAIKO  
SHINKAI 2000  
SHINKAI 6500  
DEEP TOW  
HYPER-DOLPHIN  
URASHIMA  
YOKOSUKA DEEP TOW  
6K Camera DEEP TOW  
6K Sonar DEEP TOW  
KM-ROV  
POWER GRAB SAMPLER  
(SHELL)  
POWER GRAB SAMPLER  
(CLOW)  
BMS

Cruise ID:

Go to a Dive Information

Dive ID:

Copyright 2011 Japan Agency for Marine-Earth Science and Technology



**JAMSTEC** 国立研究開発法人  
海洋研究開発機構  
JAPAN AGENCY FOR MARINE-EARTH SCIENCE AND TECHNOLOGY