

MIRAI MR08-04 in-water spectral radiation

Last Modified: 2012-10-27

[ReadMe](#) [Observation Data](#)

Cruise ID: [MR08-04](#)

in-water spectral radiation: Processed (PI)

Data Policy: [JAMSTEC](#)

Observation Items:

Science Keywords:

Data Information

Vertical profiles of up-welling radiance and down-welling irradiance, and above surface down-welling irradiance.

Cruise Report

http://www.godac.jamstec.go.jp/catalog/data/doc_catalog/media/MR08-04_all.pdf

For Using Data

Principal Investigator

Sei-ichi Saitoh (Graduate School of Fisheries Sciences, Hokkaido University)

Use Constraints

None

Data Citation

None

Instrument

Instrument:

spectroradiometer PRR800/810

(Biospherical Instrument)

Instrument Information:

PRR-800 measures vertical profiles of

up-welling radiance and down-welling

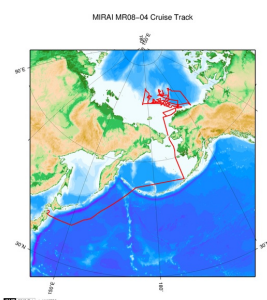
irradiance inside the visible range



Data Format

The data sampled at each station are formatted to ASCII files (CSV). See 'PRR800/810fieldnote.xlsx' to refer the data information when obtained. Data specification is also shown in 'PRR800/810data_spec.xlsx'.

Related Information



[Enlarge Image](#)

MR08-04

Ship Name: MIRAI

Period: 2008-08-15 - 2008-10-09

Chief Scientist: Koji Shimada (JAMSTEC)

Project Name: [Arctic Ocean Climate System Reaserch]

Proposal R/V Mirai International Polar Year 2008 cruise

Title:

Update History

2012-10-27 An observation data was registerd.

JAMSTEC

[Site Policy](#)

[Privacy Policy](#)

[Application for Data and Samples](#)

[Data Policy](#)

[What's New](#)

[Update History](#)

[Feeds](#)

Lists

[Publication List](#)

[Amount of Public Info.](#)

Data

[Map Search](#)

[Data Tree](#)

[Detailed Search](#)

Information of the Ships

[NATSUSHIMA](#)

[KAIYO](#)

[YOKOSUKA](#)

[MIRAI](#)

[KAIREI](#)

[CHIKYU](#)

[KAIMEI](#)

[SHINSEI MARU](#)

[HAKUHO MARU](#)

Information of the Submersibles

[KAIKO](#)

[SHINKAI 2000](#)

[SHINKAI 6500](#)

[DEEP TOW](#)

[HYPER-DOLPHIN](#)

[URASHIMA](#)

[YOKOSUKA DEEP TOW](#)

[6K Camera DEEP TOW](#)

[6K Sonar DEEP TOW](#)

[KM-ROV](#)

[POWER GRAB SAMPLER](#)

Go to a Cruise Information

Cruise ID:

Go to a Dive Information

Dive ID:

(SHELL)
POWER GRAB SAMPLER
(CLOW)
BMS

Copyright 2011 Japan Agency for Marine-Earth Science and
Technology



JAMSTEC 国立研究開発法人
海洋研究開発機構
JAPAN AGENCY FOR MARINE-EARTH SCIENCE AND TECHNOLOGY

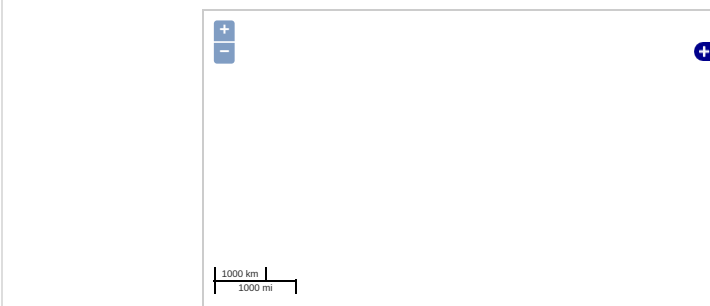
MIRAI MR08-04 in-water spectral radiation

Last Modified: 2012-10-27

[ReadMe](#) [Observation Data](#)

Cruise ID: **MR08-04**
in-water spectral radiation: Processed (PI)
Data Policy: [JAMSTEC](#)
Observation Items:
Science Keywords:

Observation Map



Imagery reproduced from ...

... Observation Line ... Navigation ... Observation, Dive Point, Hole

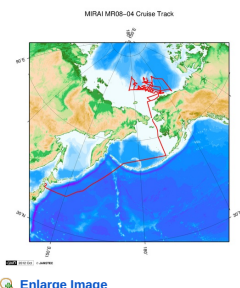
Data List

[Add to Basket](#)

File names

MR08-04_prr.zip

Related Information



[Enlarge Image](#)

MR08-04

Ship Name: MIRAI
Period: 2008-08-15 - 2008-10-09
Chief Scientist: Koji Shimada (JAMSTEC)
Project Name: [Arctic Ocean Climate System Research]
Proposal R/V Mirai International Polar Year 2008 cruise
Title:

Update History

2012-10-27 An observation data was registered.

JAMSTEC

[Site Policy](#)
[Privacy Policy](#)
[Application for Data and Samples](#)
[Data Policy](#)

[What's New](#)
[Update History](#)
[Feeds](#)

[Lists](#)
[Publication List](#)
[Amount of Public Info.](#)

[Data](#)
[Map Search](#)
[Data Tree](#)
[Detailed Search](#)

Information of the Ships

NATSUSHIMA
KAIYO
YOKOSUKA
MIRAI
KAIREI
CHIKYU
KAIMEI
SHINSEI MARU
HAKUHO MARU

Information of the Submersibles

KAIKO
SHINKAI 2000
SHINKAI 6500
DEEP TOW
HYPER-DOLPHIN
URASHIMA
YOKOSUKA DEEP TOW
6K Camera DEEP TOW
6K Sonar DEEP TOW
KM-ROV
POWER GRAB SAMPLER (SHELL)
POWER GRAB SAMPLER (CLOW)
BMS

Go to a Cruise Information

Cruise ID:

Go to a Dive Information

Dive ID: