

## MIRAI MR17-05C Total CO2 (TCO2)

Last Modified: 2019-10-01

[ReadMe](#) [Observation Data](#) [Data Format](#)

Cruise ID: [MR17-05C](#)

Total CO2 (TCO2): Processed (PI)

Data Policy: [JAMSTEC](#)

Observation Items: Total Dissolved inorganic carbon, Sea surface temperature, Sea surface salinity

Science Keywords:

OCEANS > OCEAN CHEMISTRY > INORGANIC CARBON  
OCEANS > SALINITY/DENSITY > SALINITY  
OCEANS > OCEAN TEMPERATURE > SEA SURFACE TEMPERATURE

Cruise Report

[http://www.godac.jamstec.go.jp/catalog/data/doc\\_catalog/media/MR17-05C\\_all.pdf](http://www.godac.jamstec.go.jp/catalog/data/doc_catalog/media/MR17-05C_all.pdf)

### For Using Data

Principal Investigator

Akihiko Murata (JAMSTEC)

Use Constraints

See [Terms and Conditions](#) about constrain of use.

Data Citation

See [Terms and Conditions](#) about data citation.

### Instrument

Instrument:

TCO2 measurement system (MR09-04

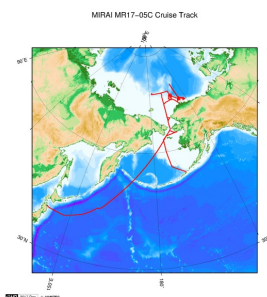
- )



### Data Citation

Please mention that this cruise was conducted under the Arctic Challenge for Sustainability (ArCS) Project, which was funded by the Ministry of Education, Culture, Sports, Science and Technology of Japan (MEXT).

### Related Information



[Enlarge Image](#)

#### MR17-05C

Ship Name: MIRAI

Period: 2017-08-24 - 2017-10-01

Chief Scientist: Shigeto Nishino (JAMSTEC)

Project Name: [Arctic Ocean Climate System Research]

Proposal ▶ Arctic Challenge for Sustainability (ArCS)

Title:

### Update History

2019-10-01 An observation data was registered.

#### JAMSTEC

[Site Policy](#)  
[Privacy Policy](#)  
[Application for Data and Samples](#)  
[Data Policy](#)  
[What's New](#)  
[Update History](#)  
[Feeds](#)

#### Lists

[Publication List](#)  
[Amount of Public Info.](#)  
[Data](#)  
[Map Search](#)  
[Data Tree](#)  
[Detailed Search](#)

#### Information of the Ships

[NATSUSHIMA](#)  
[KAIYO](#)  
[YOKOSUKA](#)  
[MIRAI](#)  
[KAIREI](#)  
[CHIKYU](#)  
[KAIMEI](#)  
[SHINSEI MARU](#)  
[HAKUHO MARU](#)

#### Information of the Submersibles

[KAIKO](#)  
[SHINKAI 2000](#)  
[SHINKAI 6500](#)  
[DEEP TOW](#)  
[HYPER-DOLPHIN](#)  
[URASHIMA](#)  
[YOKOSUKA DEEP TOW](#)  
[6K Camera DEEP TOW](#)  
[6K Sonar DEEP TOW](#)  
[KM-ROV](#)  
[POWER GRAB SAMPLER \(SHELL\)](#)  
[POWER GRAB SAMPLER \(CLOW\)](#)  
[BMS](#)

#### Go to a Cruise Information

Cruise ID:

#### Go to a Dive Information

Dive ID:



## MIRAI MR17-05C Total CO2 (TCO2)

Last Modified: 2019-10-01

[ReadMe](#) [Observation Data](#) [Data Format](#)

Cruise ID: [MR17-05C](#)

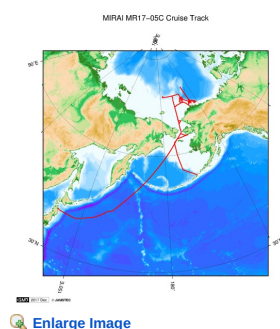
Total CO2 (TCO2): Processed (PI)

Data Policy: [JAMSTEC](#)

### uw\_TCO2 Data Format

Column No.	Column Heading Mnemonic	Comments
1	Date	Year (4 figures), Month (2 figures) and Day (2 figures) (UTC)
2	Time	Hour (2 figures), Minute (2 figures) and Second (2 figures) in the case of 6 figures (UTC)
3	Latitude	Latitude (decimal)
4	Longitude	Longitude (decimal)
5	SST	Sea surface temperature (°C)
6	SSS	Sea surface salinity
7	TCO2	Sea surface C <sub>T</sub> (μmol/kg)

### Related Information



[Enlarge Image](#)

#### MR17-05C

Ship Name: MIRAI

Period: 2017-08-24 - 2017-10-01

Chief Scientist: Shigeto Nishino (JAMSTEC)

Project Name: [Arctic Ocean Climate System Research]

Proposal ▶ Arctic Challenge for Sustainability (ArCS)

Title:

### Update History

2019-10-01 An observation data was registered.

#### JAMSTEC

[Site Policy](#)

[Privacy Policy](#)

[Application for Data and Samples](#)

[Data Policy](#)

#### What's New

[Update History](#)

[Feeds](#)

#### Lists

[Publication List](#)

[Amount of Public Info.](#)

#### Data

[Map Search](#)

[Data Tree](#)

[Detailed Search](#)

#### Information of the Ships

[NATSUSHIMA](#)

[KAIYO](#)

[YOKOSUKA](#)

[MIRAI](#)

[KAIREI](#)

[CHIKYU](#)

[KAIMEI](#)

[SHINSEI MARU](#)

[HAKUHO MARU](#)

#### Information of the Submersibles

[KAIKO](#)

[SHINKAI 2000](#)

[SHINKAI 6500](#)

[DEEP TOW](#)

[HYPER-DOLPHIN](#)

[URASHIMA](#)

[YOKOSUKA DEEP TOW](#)

[6K Camera DEEP TOW](#)

[6K Sonar DEEP TOW](#)

[KM-ROV](#)

[POWER GRAB SAMPLER \(SHELL\)](#)

[POWER GRAB SAMPLER \(CLOW\)](#)

[BMS](#)

#### Go to a Cruise Information

Cruise ID:

#### Go to a Dive Information

Dive ID:

## MIRAI MR17-05C Total CO2 (TCO2)

Last Modified: 2019-10-01

[ReadMe](#) [Observation Data](#) [Data Format](#)

Cruise ID: [MR17-05C](#)

Total CO2 (TCO2): Processed (PI)

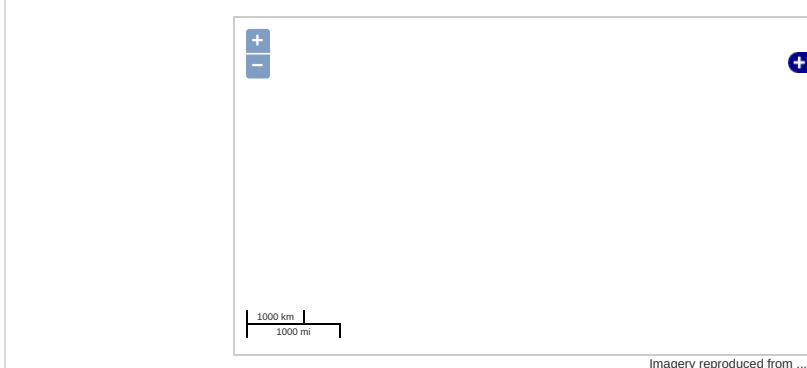
Data Policy: [JAMSTEC](#)

Observation Items: Total Dissolved inorganic carbon, Sea surface temperature, Sea surface salinity

Science Keywords:

OCEANS > OCEAN CHEMISTRY > INORGANIC CARBON  
OCEANS > SALINITY/DENSITY > SALINITY  
OCEANS > OCEAN TEMPERATURE > SEA SURFACE TEMPERATURE

### Observation Map

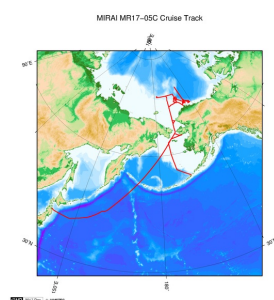


### Data List

[Add to Basket](#)

- ☐ File names
- ☐ MR17-05C\_DICunderway.csv
- ☐ Readme\_underwayDIC\_MR17-05C.doc

### Related Information



[Enlarge Image](#)

#### MR17-05C

Ship Name: MIRAI  
Period: 2017-08-24 - 2017-10-01  
Chief Scientist: Shigeto Nishino (JAMSTEC)  
Project Name: [Arctic Ocean Climate System Research]  
Proposal ▶ Arctic Challenge for Sustainability (ArCS)  
Title:

### Update History

2019-10-01 An observation data was registered.

#### JAMSTEC

[Site Policy](#)  
[Privacy Policy](#)  
[Application for Data and Samples](#)  
[Data Policy](#)

#### What's New

[Update History](#)  
[Feeds](#)

#### Lists

[Publication List](#)  
[Amount of Public Info.](#)

#### Data

[Map Search](#)  
[Data Tree](#)  
[Detailed Search](#)

#### Information of the Ships

NATSUSHIMA  
KAIYO  
YOKOSUKA  
MIRAI  
KAIREI  
CHIKYU  
KAIMEI  
SHINSEI MARU  
HAKUHO MARU

#### Information of the Submersibles

KAIKO  
SHINKAI 2000  
SHINKAI 6500  
DEEP TOW  
HYPER-DOLPHIN  
URASHIMA  
YOKOSUKA DEEP TOW  
6K Camera DEEP TOW  
6K Sonar DEEP TOW  
KM-ROV  
POWER GRAB SAMPLER (SHELL)  
POWER GRAB SAMPLER (CLOW)  
BMS

#### Go to a Cruise Information

Cruise ID:

#### Go to a Dive Information

Dive ID: