

MIRAI MR11-03 Dissolved manganese concentration

Last Modified: 2013-05-31

[ReadMe](#) [Observation Data](#)

Cruise ID: [MR11-03](#)

Dissolved manganese concentration: Processed (PI)

Data Policy: [JAMSTEC](#)

Observation Items:

Science Keywords:

Data Information

We analyzed seawater samples of Station A to C from the epicentral area of 2011 Tohoku-oki earthquake during MR11-3 in 2011.

Samples are filtrated by 0.22µm membrane filter and stored after acidification with TAMApure HNO3 (Tama Chemical).

Manganese analysis were conducted by dissolved manganese analyzer in Center for Advanced Marine Core Research, Kochi University.

Cruise Report

http://www.godac.jamstec.go.jp/catalog/data/doc_catalog/media/MR11-03_all.pdf

For Using Data

Principal Investigator

Kei Okamura (Center for Advanced Marine Core Research, Kochi University)

Use Constraints

Contact to Investigator

Data Citation

Contact to Investigator

Instrument

Instrument:

dissolved manganese analyzer

(Kimoto electric Co.)

Instrument Information:

Refer to Nakayama, E., Isshiki, K.,

Sohrin, Y., and Karatani. H., (1989),

Analytical Chemistry, 61, 1392-1396



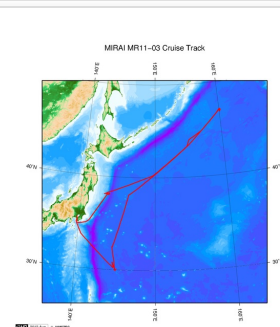
Sample

seawater

Data Format

Excel file

Related Information



[Enlarge Image](#)

MR11-03

Ship Name: MIRAI

Period: 2011-04-14 - 2011-05-05

Chief Scientist: Makio Honda (JAMSTEC)

Project Name: [Station K2, Station S1, Station KEO, Station KNOT]

Proposal ▶ Studies on the microbial-geochemical processes that regulate the operation of the biological pump in the subarctic and subtropical regions of the western North Pacific

Update History

2013-05-31 An observation data was registerd.

JAMSTEC

[Site Policy](#)

[Privacy Policy](#)

[Application for Data and Samples](#)

[Data Policy](#)

[What's New](#)

[Update History](#)

[Feeds](#)

Lists

[Publication List](#)

[Amount of Public Info.](#)

Data

[Map Search](#)

[Data Tree](#)

[Detailed Search](#)

Information of the Ships

[NATSUSHIMA](#)

[KAIYO](#)

[YOKOSUKA](#)

[MIRAI](#)

[KAIREI](#)

[CHIKYU](#)

[KAIMEI](#)

[SHINSEI MARU](#)

[HAKUHO MARU](#)

Information of the Submersibles

[KAICO](#)

[SHINKAI 2000](#)

[SHINKAI 6500](#)

[DEEP TOW](#)

[HYPER-DOLPHIN](#)

[URASHIMA](#)

[YOKOSUKA DEEP TOW](#)

[6K Camera DEEP TOW](#)

[6K Sonar DEEP TOW](#)

Go to a Cruise Information

Cruise ID:

Go to a Dive Information

Dive ID:

KM-ROV
POWER GRAB SAMPLER
(SHELL)
POWER GRAB SAMPLER
(CLOW)
BMS

Copyright 2011 Japan Agency for Marine-Earth Science and
Technology



JAMSTEC 国立研究開発法人
海洋研究開発機構
JAPAN AGENCY FOR MARINE-EARTH SCIENCE AND TECHNOLOGY

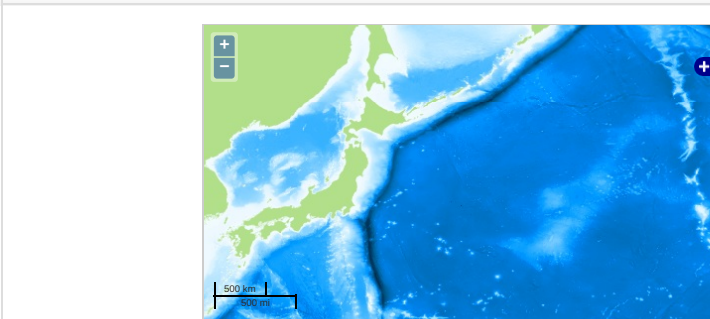
MIRAI MR11-03 Dissolved manganese concentration

Last Modified: 2013-05-31

[ReadMe](#) [Observation Data](#)

Cruise ID: **MR11-03**
Dissolved manganese concentration: Processed (PI)
Data Policy: [JAMSTEC](#)
Observation Items:
Science Keywords:

Observation Map



Imagery reproduced from ...

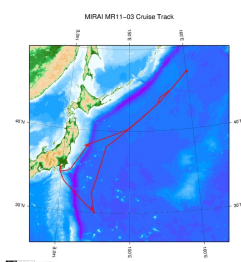
Data List

[Add to Basket](#)

File names

☐ MR11-03_Mn_noguchi.xls

Related Information



[Enlarge Image](#)

MR11-03

Ship Name: MIRAI
Period: 2011-04-14 - 2011-05-05
Chief Scientist: Makio Honda (JAMSTEC)
Project Name: [Station K2, Station S1, Station KEO, Station KNOT]
Proposal: Studies on the microbial-geochemical processes that regulate the operation of the biological pump in the subarctic and subtropical regions of the western North Pacific
Title:

Update History

2013-05-31 An observation data was registerd.

JAMSTEC

[Site Policy](#)
[Privacy Policy](#)
[Application for Data and Samples](#)
[Data Policy](#)
[What's New](#)
[Update History](#)
[Feeds](#)

[Lists](#)
[Publication List](#)
[Amount of Public Info.](#)
[Data](#)
[Map Search](#)
[Data Tree](#)
[Detailed Search](#)

Information of the Ships

NATSUSHIMA
KAIYO
YOKOSUKA
MIRAI
KAIREI
CHIKYU
KAIMEI
SHINSEI MARU
HAKUHO MARU

Information of the Submersibles

KAIKO
SHINKAI 2000
SHINKAI 6500
DEEP TOW
HYPER-DOLPHIN
URASHIMA
YOKOSUKA DEEP TOW
6K Camera DEEP TOW
6K Sonar DEEP TOW
KM-ROV
POWER GRAB SAMPLER (SHELL)
POWER GRAB SAMPLER (CLOW)
BMS

Go to a Cruise Information

Cruise ID:

Go to a Dive Information

Dive ID: