

MIRAI MR14-03 Bathymetry (MBES)

Last Modified: 2019-02-25

ReadMe

Cruise ID: [MR14-03](#)

Bathymetry (MBES): Raw

Data Policy: [JAMSTEC](#)

Observation Items: Depth

Science Keywords:

OCEANS > BATHYMETRY/SEAFLOOR > BATHYMETRY
TOPOGRAPHY
SOLID EARTH > GEOMORPHOLOGY

For Using Data

Principal Investigator

Data Management Office

Use Constraints

See [Terms and Conditions](#) about constrain of use.

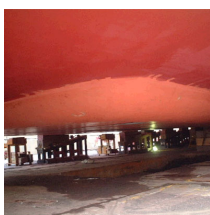
Data Citation

See [Terms and Conditions](#) about data citation.

Instrument

Instrument:

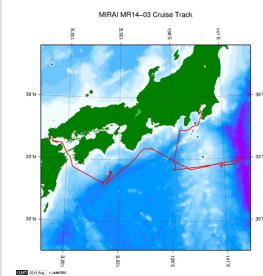
Multi beam echo sounder (MR14-03 -)



About this data

We have no plan to process the data due to equipment failure etc.
Please refer to the "Contact Us" if you wish to use the raw data.

Related Information



[Enlarge Image](#)

MR14-03

Ship Name: MIRAI
Period: 2014-06-02 - 2014-06-11
Chief Scientist: Harumi Ohta (JAMSTEC)

Update History

2019-02-25 An observation data was registerd.

JAMSTEC

[Site Policy](#)
[Privacy Policy](#)
[Application for Data and Samples](#)
[Data Policy](#)

[What's New](#)
[Update History](#)
[Feeds](#)

Lists

[Publication List](#)
[Amount of Public Info.](#)

Data

[Map Search](#)
[Data Tree](#)
[Detailed Search](#)

Information of the Ships

[NATSUSHIMA](#)
[KAIYO](#)
[YOKOSUKA](#)
[MIRAI](#)
[KAIREI](#)
[CHIKYU](#)
[KAIMEI](#)
[SHINSEI MARU](#)
[HAKUHO MARU](#)

Information of the Submersibles

[KAIKO](#)
[SHINKAI 2000](#)
[SHINKAI 6500](#)
[DEEP TOW](#)
[HYPER-DOLPHIN](#)
[URASHIMA](#)
[YOKOSUKA DEEP TOW](#)
[6K Camera DEEP TOW](#)
[6K Sonar DEEP TOW](#)
[KM-ROV](#)
[POWER GRAB](#)
[SAMPLER \(SHELL\)](#)
[POWER GRAB](#)
[SAMPLER \(CLOW\)](#)
[BMS](#)

Go to a Cruise Information

Cruise ID:

Go to a Dive Information

Dive ID:

MIRAI MR14-03 Bathymetry (MBES)

Last Modified: 2019-02-25

ReadMe

Cruise ID: [MR14-03](#)

Bathymetry (MBES): Raw

Data Policy: [JAMSTEC](#)

Observation Items: Depth

Science Keywords:

OCEANS > BATHYMETRY/SEAFLOOR TOPOGRAPHY > BATHYMETRY
SOLID EARTH > GEOMORPHOLOGY

For Using Data

Principal Investigator

Data Management Office

Use Constraints

See [Terms and Conditions](#) about constrain of use.

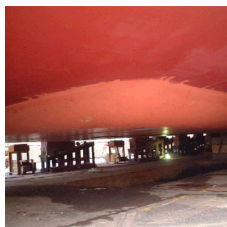
Data Citation

See [Terms and Conditions](#) about data citation.

Instrument

Instrument:

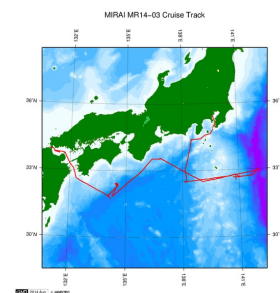
Multi beam echo sounder (MR14-03 -)



About this data

We have no plan to process the data due to equipment failure etc.
Please refer to the "Contact Us" if you wish to use the raw data.

Related Information



 [Enlarge Image](#)

MR14-03

Ship Name: MIRAI

Period: 2014-06-02 - 2014-06-11

Chief Scientist: Harumi Ohta (JAMSTEC)

Update History

2019-02-25	An observation data was registerd.
------------	------------------------------------

JAMSTEC

[Site Policy](#)
[Privacy Policy](#)
[Application for Data and Samples](#)
[Data Policy](#)
[What's New](#)
[Update History](#)
[Feeds](#)

Lists

[Publication List](#)
[Amount of Public Info.](#)

[Data](#)
[Map Search](#)
[Data Tree](#)
[Detailed Search](#)

Information of the Ships

[NATSUSHIMA](#)
[KAIYO](#)
[YOKOSUKA](#)
[MIRAI](#)
[KAIREI](#)
[CHIKYU](#)
[KAIMEI](#)
[SHINSEI MARU](#)
[HAKUHO MARU](#)

Information of the Submersibles

[KAIKO](#)
[SHINKAI 2000](#)
[SHINKAI 6500](#)
[DEEP TOW](#)
[HYPER-DOLPHIN](#)
[URASHIMA](#)
[YOKOSUKA DEEP TOW](#)
[6K Camera DEEP TOW](#)
[6K Sonar DEEP TOW](#)
[KM-ROV](#)
[POWER GRAB SAMPLER \(SHELL\)](#)
[POWER GRAB SAMPLER \(CLOW\)](#)
[BMS](#)

Go to a Cruise Information

Cruise ID:

Go to a Dive Information

Dive ID:

MIRAI MR14-03 Bathymetry (MBES)

Last Modified: 2019-02-25

ReadMe

Cruise ID: [MR14-03](#)

Bathymetry (MBES): Raw

Data Policy: [JAMSTEC](#)

Observation Items: Depth

Science Keywords:

OCEANS > BATHYMETRY/SEAFLOOR TOPOGRAPHY > BATHYMETRY
SOLID EARTH > GEOMORHOLOGY

For Using Data

Principal Investigator

Data Management Office

Use Constraints

See [Terms and Conditions](#) about constrain of use.

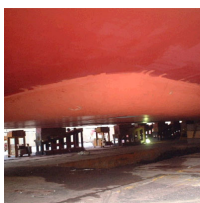
Data Citation

See [Terms and Conditions](#) about data citation.

Instrument

Instrument:

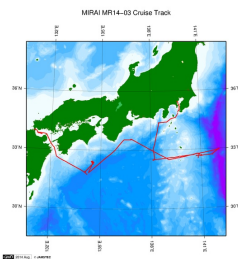
Multi beam echo sounder (MR14-03 -)



About this data

We have no plan to process the data due to equipment failure etc.
Please refer to the "Contact Us" if you wish to use the raw data.

Related Information



[Enlarge Image](#)

MR14-03

Ship Name: MIRAI

Period: 2014-06-02 - 2014-06-11

Chief Scientist: Harumi Ohta (JAMSTEC)

Update History

2019-02-25 An observation data was registered.

JAMSTEC

[Site Policy](#)

[Privacy Policy](#)

[Application for Data and Samples](#)

[Data Policy](#)

[What's New](#)

[Update History](#)

[Feeds](#)

Lists

[Publication List](#)

[Amount of Public Info.](#)

Data

[Map Search](#)

[Data Tree](#)

[Detailed Search](#)

Information of the Ships

[NATSUSHIMA](#)

[KAIYO](#)

[YOKOSUKA](#)

[MIRAI](#)

[KAIREI](#)

[CHIKYU](#)

[KAIMEI](#)

[SHINSEI MARU](#)

[HAKUHO MARU](#)

Information of the Submersibles

[KAIKO](#)

[SHINKAI 2000](#)

[SHINKAI 6500](#)

[DEEP TOW](#)

[HYPER-DOLPHIN](#)

[URASHIMA](#)

[YOKOSUKA DEEP TOW](#)

[6K Camera DEEP TOW](#)

[6K Sonar DEEP TOW](#)

[KM-ROV](#)

[POWER GRAB SAMPLER \(SHELL\)](#)

[POWER GRAB SAMPLER \(CLOW\)](#)

[BMS](#)

Go to a Cruise Information

Cruise ID:

Go to a Dive Information

Dive ID: