

## MIRAI MR11-08 Leg3 Lowered Acoustic Doppler Current Profiler (LADCP)

Last Modified: 2018-05-12

[ReadMe](#) [Observation Data](#)

Cruise ID: [MR11-08 Leg3](#)

Lowered Acoustic Doppler Current Profiler (LADCP) : Processed (PI)

Data Policy: [JAMSTEC](#)

Observation Items: Depth, Velocity (zonal and meridional)

Science Keywords:

OCEANS > OCEAN CIRCULATION > OCEAN CURRENTS

Cruise Report

[http://www.godac.jamstec.go.jp/catalog/data/doc\\_catalog/media/MR11-08\\_leg1-3\\_all.pdf](http://www.godac.jamstec.go.jp/catalog/data/doc_catalog/media/MR11-08_leg1-3_all.pdf)

### For Using Data

#### Principal Investigator

Shinya Koketsu (JAMSTEC)

#### Use Constraints

See [Terms and Conditions](#) about constrain of use.

#### Data Citation

See [Terms and Conditions](#) about data citation.

### Overview

Please see the [Data book](#) for details of data.

Velocity data with LADCP

Folders:

data/ Velocity profile for full depth.

File Format:

```
Cruise_Code Section_Code Station_Code Cast_Code
Year/Month/Day Hour/Minutes Time_Zone
Degree_Latitude Minites_Latitude [N/S] Degree_Longitude Minites_Longitude [E/W]
"z u v ev"
Depth(m) U(m/s) V(m/s) Error(m/s)
. . . .
. . . .
. . . .
. . . .
. . . .
```

Cruise\_Code : cruise code

Section\_Code: section code

Station\_Code: station code

Cast\_Code: cast code

Year/Month/Day Hour/Minutes Time\_Zone: The time at the bottom of the cast.

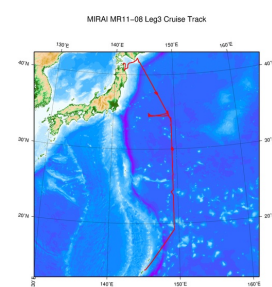
Degree\_Latitude Minites\_Latitude [N/S]: The latitude at the bottom of the cast.

Degree\_Longitude Minites\_Longitude [E/W]: The longitude at the bottom of the cast.

Contact:

Shinya Kouketsu (skouketsu@jamstec.go.jp)

### Related Information



[Enlarge Image](#)

#### MR11-08 Leg3

Ship Name: MIRAI

Period: 2012-01-12 - 2012-02-09

Chief Scientist: Yuichiro Kumamoto (JAMSTEC)

Project Name: [POST-WOCE Hydrography]

### Update History

2018-05-12	An observation data was registerd.
2014-04-30	An observation data was registerd.

[Site Policy](#)  
[Privacy Policy](#)  
[Application for Data and Samples](#)  
[Data Policy](#)  
  
**What's New**  
[Update History](#)  
[Feeds](#)

[Publication List](#)  
[Amount of Public Info.](#)  
  
**Data**  
[Map Search](#)  
[Data Tree](#)  
[Detailed Search](#)

[NATSUSHIMA](#)  
[KAIYO](#)  
[YOKOSUKA](#)  
[MIRAI](#)  
[KAIREI](#)  
[CHIKYU](#)  
[KAIMEI](#)  
[SHINSEI MARU](#)  
[HAKUHO MARU](#)

**Submersibles**  
[KAIKO](#)  
[SHINKAI 2000](#)  
[SHINKAI 6500](#)  
[DEEP TOW](#)  
[HYPER-DOLPHIN](#)  
[URASHIMA](#)  
[YOKOSUKA DEEP TOW](#)  
[6K Camera DEEP TOW](#)  
[6K Sonar DEEP TOW](#)  
[KM-ROV](#)  
[POWER GRAB SAMPLER \(SHELL\)](#)  
[POWER GRAB SAMPLER \(CLOW\)](#)  
[BMS](#)

Cruise ID:

Go to a Dive Information

Dive ID:

Copyright 2011 Japan Agency for Marine-Earth Science and Technology



**JAMSTEC**  
JAPAN AGENCY FOR MARINE-EARTH SCIENCE AND TECHNOLOGY

国立研究開発法人  
海洋研究開発機構

## MIRAI MR11-08 Leg3 Lowered Acoustic Doppler Current Profiler (LADCP)

Last Modified: 2018-05-12

[ReadMe](#) [Observation Data](#)

Cruise ID: [MR11-08 Leg3](#)

Lowered Acoustic Doppler Current Profiler (LADCP) : Processed (PI)

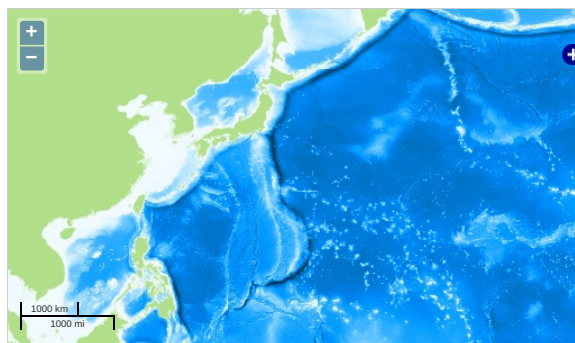
Data Policy: [JAMSTEC](#)

Observation Items: Depth, Velocity (zonal and meridional)

Science Keywords:

OCEANS > OCEAN CIRCULATION > OCEAN CURRENTS

### Observation Map



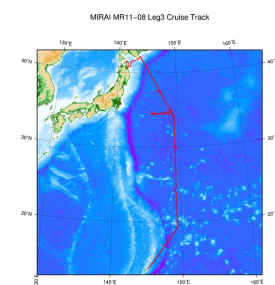
... Observation Line ... Navigation ... Observation, Dive Point, Hole

### Data List

File names

☐ ladcp.zip

### Related Information



[Enlarge Image](#)

### MR11-08 Leg3

Ship Name: MIRAI

Period: 2012-01-12 - 2012-02-09

Chief Scientist: Yuichiro Kumamoto (JAMSTEC)

Project Name: [POST-WOCE Hydrography]

### Update History

2018-05-12	An observation data was registered.
2014-04-30	An observation data was registered.

### JAMSTEC

[Site Policy](#)  
[Privacy Policy](#)  
[Application for Data and Samples](#)  
[Data Policy](#)  
[What's New](#)  
[Update History](#)  
[Feeds](#)

### Lists

[Publication List](#)  
[Amount of Public Info.](#)  
[Data](#)  
[Map Search](#)  
[Data Tree](#)  
[Detailed Search](#)

### Information of the Ships

[NATSUSHIMA](#)  
[KAIYO](#)  
[YOKOSUKA](#)  
[MIRAI](#)  
[KAIREI](#)  
[CHIKYU](#)  
[KAIMEI](#)  
[SHINSEI MARU](#)  
[HAKUHO MARU](#)

### Information of the Submersibles

[KAICO](#)  
[SHINKAI 2000](#)  
[SHINKAI 6500](#)  
[DEEP TOW](#)  
[HYPER-DOLPHIN](#)  
[URASHIMA](#)  
[YOKOSUKA DEEP TOW](#)  
[6K Camera DEEP TOW](#)  
[6K Sonar DEEP TOW](#)  
[KM-ROV](#)  
[POWER GRAB SAMPLER \(SHELL\)](#)  
[POWER GRAB SAMPLER \(CLOW\)](#)  
[BMS](#)

### Go to a Cruise Information

Cruise ID:

### Go to a Dive Information

Dive ID: