

**For Using Data**

Data Policy	JURCAOS-JAMSTEC
Principal Investigator	Data Management Office
Use Constraints	See Terms and Conditions about constrain of use.
Data Citation	See Terms and Conditions about data citation.

**Quality level**

Processed(DMO)-Corrected

**Instrument**

Shipboard gravimeter



Microgravimeter

**Overview**

The data provided here are quality-controlled absolute gravity data and free-air anomalies. The absolute gravity data are a combination of relative gravity data measured by the shipboard gravity meter and the absolute gravity data of the ports in departure and arrival. Drift corrections and the Eotvos corrections were done before converting into absolute gravity. As a quality control, low reliability data were removed (see Quality control of data for the judging criteria). The absolute gravity values of the ports are referenced to those of the Japan Gravity Standardization Net of the Geographical Survey Institute of Japan.

**Measurement System**

## 1) Shipboard gravity meter

The system consists of two main assemblies; the gyro-stabilized platform including the gravity sensor and the data handling & control system.

Manufacturer :	Micro-g LaCoste
Type :	S-177
Measurement range :	20,000 mGal
Accuracy :	1.0 mGal
Drift rate :	< 3.0 mGal/month
Location :	Gravity meter room
Reference :	"Air-Sea System II Marine Gravity Meter User Manual", Micro-g LaCoste

## 2) Portable gravity meter

The portable gravity meter consists of two modules; the data acquisition/control module and the gravity sensor module. The gravity sensor is enclosed in a thermostatically controlled vacuum chamber. The portable gravity meter is used to calculate the absolute gravity of the port with reference to the gravity station of the Japan Gravity Standardization Net of the Geographical Survey Institute of Japan.

Manufacturer :	SCINTREX
Model :	CG-5
Measurement range :	8,000 mGal
Standard deviation :	0.005 mGal
Drift rate :	< 0.02 mGal/day
Reference :	"CG-5 OPERATION MANUAL", SCINTREX

**Absolute gravity in Ports**

Date (UTC)	2022/3/30 22:25	2022/4/23 3:24
Port	YOKOSUKA/JAMSTEC	YOKOSUKA/JAMSTEC
Absolute gravity (mGal)	979757.99	979757.98
Sea level (cm)	290	320
Draft shipboard (cm)	440	440

Absolute gravity at sensor position (mGal)	979759.51	979759.59
Reading of shipboard gravity meter (mGal)	11914.7	11913.7

Altitude conversion formula

$$Ag = Pg + \beta * HS/100 + (HD - HSG)/100 * (\beta - 4\pi * k * \rho_w)$$

Ag : The absolute gravity at the shipboard sensor position (mGal)

Pg : The absolute gravity of the portable gravity meter (mGal)

HSG : Height of the shipboard gravity meter from the ship bottom (160 cm : R/V SHINSEI-MARU)

HS : Sea level (cm)

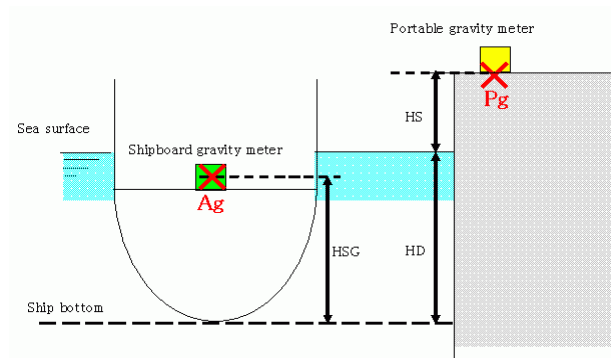
HD : Draft (cm)

$\beta$  : Free-air gradient 0.3086 (mGal/m)

k : Gravitational constant

$\rho_w$  : Density of sea water

$$4\pi * k * \rho_w = 0.0864$$



## Data processing

According to the filter process of the gravity meter system, the gravity data has a time lag of 180 seconds between the measurement and its output. After adjustment of this lag time, the following corrections and calculations were performed.

### 1) Drift correction

$$D = ((Vg - Vgs) - (Age - Ags)) / (Te - Ts)$$

D : Drift value (mGal/day)

Vgs : The shipboard gravity at the start of the cruise (mGal)

Vge : The shipboard gravity at the end of the cruise (mGal)

Ags : The absolute gravity at the shipboard sensor position at the start of the cruise (mGal)

Age : The absolute gravity at the shipboard sensor position at the end of the cruise (mGal)

Ts : The start time of the cruise (day)

Te : The end time of the cruise (day)

### 2) Eotvoes correction

$$E = 7.503 * S * \cos(\phi) * \sin(\alpha) + 0.004154 * S^2$$

E : Eotvoes correction (mGal)

S : Ground speed of the ship (knot)

$\phi$  : Latitude

$\alpha$  : Course of the ship (measured clockwise from the north)

Reference : Blakely, R.J., Potential theory in gravity & magnetic applications, Cambridge University Press, New York, 441pp, 1995

\* The navigation data such as S,  $\phi$  and  $\alpha$  are the 4-min average values. Before average processing, following data were removed from each dataset. If the number of data used for a 4-min average calculation did not include more than 50% of good data, the processed average value was considered as a missing value.

- Time error (inversion of time, continuation of same timestamps)
- Ship speed exceeding 20 knot
- Course of the ship except 0-360 degree

### 3) Calculation of the absolute gravity

$$G = Ags + (Vg - Vgs) - D * (T - Ts) + E - H * (\beta - 4\pi * k * \rho_w)$$

G : The absolute gravity at sea surface (mGal)

Ags : The absolute gravity at the shipboard sensor position at the start of the cruise (mGal)

Vgs : The shipboard gravity at the start of the cruise (mGal)  
 Vg : The shipboard gravity at the measurement time (mGal)  
 D : Drift value (mGal/day)  
 Ts : The start time of the cruise (day)  
 T : The measurement time (day)  
 E : Eotvoes correction (mGal)  
 H : Height from sea surface of the shipboard sensor position (m)  
 $\beta$  : Free-air gradient 0.3086 (mGal/m)  
 k : Gravitational constant  
 $\rho_w$  : Density of sea water  
 $4\pi \cdot k \cdot \rho_w = 0.0864$

#### 4) Calculation of the Free-air anomaly

$$G_f = G - \gamma + \delta$$

Gf : The Free-air anomaly (mGal)  
 G : Absolute gravity at sea surface (mGal)  
 $\gamma$  : Normal gravity (mGal)

\* The normal gravity formula of the Geodetic Reference System 1980

$$\gamma = 978032.67715(1 + 0.0052790414 \sin^2 \phi + 0.0000232718 \sin^4 \phi + 0.0000001262 \sin^6 \phi + 0.0000000007 \sin^8 \phi)$$

$\delta$  : Atmospheric correction at sea surface  
 $\delta = 0.87 - 0.0000965 \cdot 0$  (mGal)

#### 5) Output of the data

Time (UTC)  
 Latitude (degree)  
 Longitude (degree)  
 Processed absolute gravity at sea surface (mGal)  
 Free-air anomaly (mGal)

### Quality control of data

Following criteria were used for removal of low reliability data:

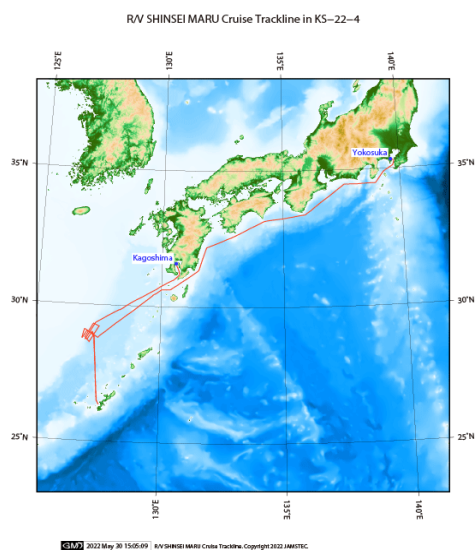
- Abrupt free-air anomaly change exceeding 10 mGal/km
- Change in Eotvoes correction exceeding 3 mGal/min
- Ground speed of the ship below 3 knot

### Note

- 1) File naming rule : Cruise ID\_corr.grv
- 2) Sampling rate : ten seconds
- 3) Geodetic system : WGS84
- 4) If you would like the raw data set, please contact DMO at "dmo@jamstec.go.jp".

## Related Information

---



### KS-22-4

Ship Name:

SHINSEI MARU

Period:

2022/04/01 - 2022/04/10

Chief Scientist:

Tomohisa Irino (Hokkaido University)

Proposal:

Quantitative reconstruction of the Kuroshio variability in the Okinawa Trough region since the last glacial period

**Format Description for Gravity Corrected**

No.	Column	Content	Format	Unit	Remarks
1	1 - 8	Date	i4,i2,i2		YYYYMMDD (UTC)
2	10 - 15	Time	i2,i2,i2		hhmmss (UTC)
3	17 - 25	Latitude	f9.5	degree	No sign for the northern hemisphere. Negative for the southern hemisphere.
4	27 - 36	Longitude	f10.5	degree	No sign for eastern hemisphere. Negative for the western hemisphere.
5	38 - 45	Absolute gravity	f8.1	mGal	
6	48 - 53	Free-air anomaly	f6.1	mGal	