

## MIRAI MR08-06 Leg1 Shipboard Acoustic Doppler Current Profiler (ADCP)

Last Modified: 2012-10-27

### ReadMe

Cruise ID: [MR08-06 Leg1](#)

Shipboard Acoustic Doppler Current Profiler (ADCP): Raw

Data Policy: [JAMSTEC](#)

Observation Items: Depth, Absolute velocity (zonal, meridional and vertical)

Science Keywords:

OCEANS > OCEAN CIRCULATION > OCEAN CURRENTS

### Cruise Report

[http://www.godac.jamstec.go.jp/catalog/data/doc\\_catalog/media/MR08-06\\_leg1\\_all.pdf](http://www.godac.jamstec.go.jp/catalog/data/doc_catalog/media/MR08-06_leg1_all.pdf)

#### For Using Data

##### Principal Investigator

Data Management Office

##### Use Constraints

See [Terms and Conditions](#) about constrain of use.

##### Data Citation

See [Terms and Conditions](#) about data citation.

### Instrument

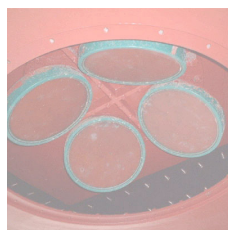
Instrument:

Shipboard acoustic doppler current profiler (ADCP) (MR08-02 - )



Instrument:

Shipboard acoustic doppler current profiler (ADCP) ( - MR08-E01)

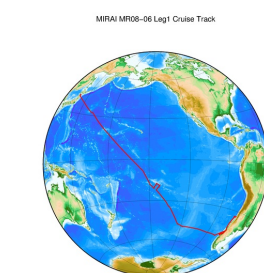


### About this data

We have no plan to process the data due to equipment failure etc.

Please refer to the "Contact Us" if you wish to use the raw data.

### Related Information



[Enlarge Image](#)

#### MR08-06 Leg1

Ship Name: MIRAI

Period: 2009-01-14 - 2009-03-13

Chief Scientist: Natsue Abe (JAMSTEC)

Project Name: [South Pacific Ocean Research Activity 2009]

### Update History

2012-10-27 An observation data was registerd.

#### JAMSTEC

[Site Policy](#)  
[Privacy Policy](#)  
[Application for Data and Samples](#)  
[Data Policy](#)

[What's New](#)  
[Update History](#)  
[Feeds](#)

#### Lists

[Publication List](#)  
[Amount of Public Info.](#)  
[Data](#)  
[Map Search](#)  
[Data Tree](#)  
[Detailed Search](#)

#### Information of the Ships

[NATSUSHIMA](#)  
[KAIYO](#)  
[YOKOSUKA](#)  
[MIRAI](#)  
[KAIREI](#)  
[CHIKYU](#)  
[KAIMEI](#)  
[SHINSEI MARU](#)  
[HAKUHO MARU](#)

#### Information of the Submersibles

[KAIKO](#)  
[SHINKAI 2000](#)  
[SHINKAI 6500](#)  
[DEEP TOW](#)  
[HYPER-DOLPHIN](#)  
[URASHIMA](#)  
[YOKOSUKA DEEP TOW](#)  
[6K Camera DEEP TOW](#)  
[6K Sonar DEEP TOW](#)  
[KM-ROV](#)  
[POWER GRAB SAMPLER \(SHELL\)](#)  
[POWER GRAB SAMPLER \(CLOW\)](#)  
[BMS](#)

#### Go to a Cruise Information

Cruise ID:

#### Go to a Dive Information

Dive ID:

## MIRAI MR08-06 Leg1 Shipboard Acoustic Doppler Current Profiler (ADCP)

Last Modified: 2012-10-27

### ReadMe

Cruise ID: [MR08-06 Leg1](#)

Shipboard Acoustic Doppler Current Profiler (ADCP) Raw

Data Policy: [JAMSTEC](#)

Observation Items: Depth, Absolute velocity (zonal, meridional and vertical)

Science Keywords:

OCEANS > OCEAN CIRCULATION > OCEAN CURRENTS

### Cruise Report

[http://www.godac.jamstec.go.jp/catalog/data/doc\\_catalog/media/MR08-06\\_leg1\\_all.pdf](http://www.godac.jamstec.go.jp/catalog/data/doc_catalog/media/MR08-06_leg1_all.pdf)

### For Using Data

#### Principal Investigator

Data Management Office

#### Use Constraints

See [Terms and Conditions](#) about constrain of use.

#### Data Citation

See [Terms and Conditions](#) about data citation.

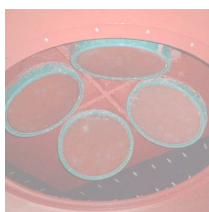
### Instrument

Instrument:

Shipboard acoustic doppler current profiler (ADCP) (MR08-02 - )

Instrument:

Shipboard acoustic doppler current profiler (ADCP) ( - MR08-E01)

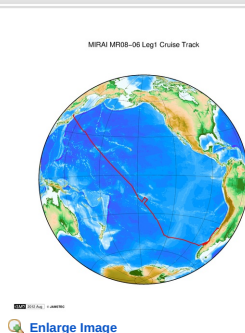


### About this data

We have no plan to process the data due to equipment failure etc.

Please refer to the "Contact Us" if you wish to use the raw data.

### Related Information



### MR08-06 Leg1

Ship Name: MIRAI

Period: 2009-01-14 - 2009-03-13

Chief Scientist: Natsue Abe (JAMSTEC)

Project Name: [South Pacific Ocean Research Activity 2009]

### Update History

2012-10-27

An observation data was registered.

JAMSTEC  
Site Policy  
Privacy Policy  
Application for Data and Samples  
Data Policy  
What's New  
Update History  
Feeds

Lists  
Publication List  
Amount of Public Info.  
Data  
Map Search  
Data Tree  
Detailed Search

Information of the Ships  
NATSUSHIMA  
KAIYO  
YOKOSUKA  
MIRAI  
KAIREI  
CHIKYU  
KAIMEI  
SHINSEI MARU  
HAKUHO MARU

Information of the Submersibles  
KAIKO  
SHINKAI 2000  
SHINKAI 6500  
DEEP TOW  
HYPER-DOLPHIN  
URASHIMA  
YOKOSUKA DEEP TOW  
6K Camera DEEP TOW  
6K Sonar DEEP TOW  
KM-ROV  
POWER GRAB  
SAMPLER (SHELL)  
POWER GRAB  
SAMPLER (CLOW)  
BMS

### Go to a Cruise Information

Cruise ID:

### Go to a Dive Information

Dive ID:

## MIRAI MR08-06 Leg1 Shipboard Acoustic Doppler Current Profiler (ADCP)

Last Modified: 2012-10-27

### ReadMe

Cruise ID: [MR08-06 Leg1](#)

Shipboard Acoustic Doppler Current Profiler (ADCP): Raw

Data Policy: [JAMSTEC](#)

Observation Items: Depth, Absolute velocity (zonal, meridional and vertical)

Science Keywords:

OCEANS > OCEAN CIRCULATION > OCEAN CURRENTS

### Cruise Report

[http://www.godac.jamstec.go.jp/catalog/data/doc\\_catalog/media/MR08-06\\_leg1\\_all.pdf](http://www.godac.jamstec.go.jp/catalog/data/doc_catalog/media/MR08-06_leg1_all.pdf)

#### For Using Data

##### Principal Investigator

Data Management Office

##### Use Constraints

See [Terms and Conditions](#) about constrain of use.

##### Data Citation

See [Terms and Conditions](#) about data citation.

### Instrument

Instrument:

Shipboard acoustic doppler current profiler (ADCP) (MR08-02 - )



Instrument:

Shipboard acoustic doppler current profiler (ADCP) ( - MR08-E01)

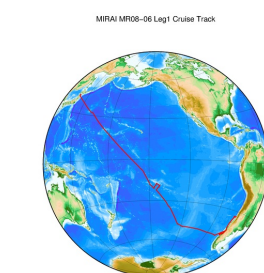


### About this data

We have no plan to process the data due to equipment failure etc.

Please refer to the "Contact Us" if you wish to use the raw data.

### Related Information



[Enlarge Image](#)

#### MR08-06 Leg1

Ship Name: MIRAI

Period: 2009-01-14 - 2009-03-13

Chief Scientist: Natsue Abe (JAMSTEC)

Project Name: [South Pacific Ocean Research Activity 2009]

### Update History

2012-10-27 An observation data was registerd.

#### JAMSTEC

[Site Policy](#)

[Privacy Policy](#)

[Application for Data and Samples](#)

[Data Policy](#)

#### What's New

[Update History](#)

[Feeds](#)

#### Lists

[Publication List](#)

[Amount of Public Info.](#)

#### Data

[Map Search](#)

[Data Tree](#)

[Detailed Search](#)

#### Information of the Ships

[NATSUSHIMA](#)

[KAIYO](#)

[YOKOSUKA](#)

[MIRAI](#)

[KAIREI](#)

[CHIKYU](#)

[KAIMEI](#)

[SHINSEI MARU](#)

[HAKUHO MARU](#)

#### Information of the Submersibles

[KAIKO](#)

[SHINKAI 2000](#)

[SHINKAI 6500](#)

[DEEP TOW](#)

[HYPER-DOLPHIN](#)

[URASHIMA](#)

[YOKOSUKA DEEP TOW](#)

[6K Camera DEEP TOW](#)

[6K Sonar DEEP TOW](#)

[KM-ROV](#)

[POWER GRAB SAMPLER \(SHELL\)](#)

[POWER GRAB SAMPLER \(CLOW\)](#)

[BMS](#)

#### Go to a Cruise Information

Cruise ID:

#### Go to a Dive Information

Dive ID: