

MIRAI MR08-02 Plant pigments concentration

Last Modified: 2012-10-27

[ReadMe](#) [Observation Data](#)

Cruise ID: [MR08-02](#)

Plant pigments concentration: Processed (PI)

Data Policy: [JAMSTEC](#)

Observation Items:

Science Keywords:

Data Information

Zeathanxin and DV chlorophyll a determined by a HPLC on board. After the cruise, quality of the data was checked.

Cruise Report

http://www.godac.jamstec.go.jp/catalog/data/doc_catalog/media/MR08-02_all.pdf

For Using Data

Principal Investigator

Ken Furuya (The University of Tokyo)

Use Constraints

None

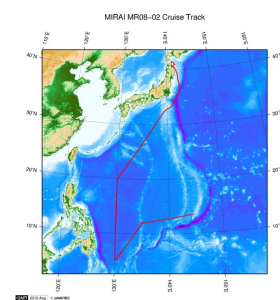
Data Citation

None

Data Format

Excel File (.xlsx format)

Related Information



[Enlarge Image](#)

MR08-02

Ship Name: MIRAI

Period: 2008-05-26 - 2008-06-30

Chief Scientist: Kunio Yoneyama (JAMSTEC)

Project Name: [MJO Research]

Proposal ▶ Observational Study on the Air-Sea Interaction in the Tropical Western Pacific Ocean

Title:

Update History

2012-10-27 An observation data was registerd.

JAMSTEC

[Site Policy](#)

[Privacy Policy](#)

[Application for Data and Samples](#)

[Data Policy](#)

What's New

[Update History](#)

[Feeds](#)

Lists

[Publication List](#)

[Amount of Public Info.](#)

Data

[Map Search](#)

[Data Tree](#)

[Detailed Search](#)

Information of the Ships

[NATSUSHIMA](#)

[KAIYO](#)

[YOKOSUKA](#)

[MIRAI](#)

[KAIREI](#)

[CHIKYU](#)

[KAIMEI](#)

[SHINSEI MARU](#)

[HAKUHO MARU](#)

Information of the Submersibles

[KAIKO](#)

[SHINKAI 2000](#)

[SHINKAI 6500](#)

[DEEP TOW](#)

[HYPER-DOLPHIN](#)

[URASHIMA](#)

[YOKOSUKA DEEP TOW](#)

[6K Camera DEEP TOW](#)

[6K Sonar DEEP TOW](#)

[KM-ROV](#)

[POWER GRAB SAMPLER \(SHELL\)](#)

[POWER GRAB SAMPLER \(CLOW\)](#)

[BMS](#)

Go to a Cruise Information

Cruise ID:

Go to a Dive Information

Dive ID:

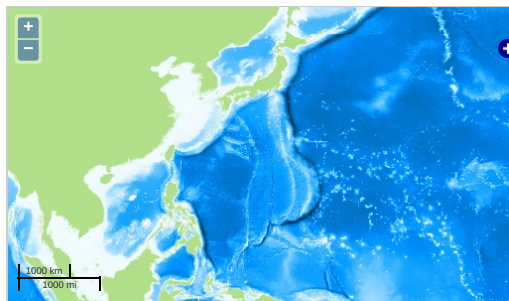
MIRAI MR08-02 Plant pigments concentration

Last Modified: 2012-10-27

[ReadMe](#) [Observation Data](#)

Cruise ID: **MR08-02**
Plant pigments concentration: Processed (PI)
Data Policy: [JAMSTEC](#)
Observation Items:
Science Keywords:

Observation Map



... Observation Line ... Navigation ... Observation, Dive Point, Hole

Imagery reproduced from ...

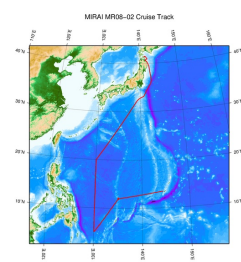
Data List

[Add to Basket](#)

File names

MR08-02_ZeaXanthin.zip

Related Information



[Enlarge Image](#)

MR08-02

Ship Name: MIRAI
Period: 2008-05-26 - 2008-06-30
Chief Scientist: Kunio Yoneyama (JAMSTEC)
Project Name: [MJO Research]
Proposal ▶ Observational Study on the Air-Sea Interaction in the Tropical Western Pacific Ocean
Title:

Update History

2012-10-27 An observation data was registered.

JAMSTEC

[Site Policy](#)
[Privacy Policy](#)
[Application for Data and Samples](#)
[Data Policy](#)

[What's New](#)
[Update History](#)
[Feeds](#)

Lists

[Publication List](#)
[Amount of Public Info.](#)

[Data](#)
[Map Search](#)
[Data Tree](#)
[Detailed Search](#)

Information of the Ships

[NATSUSHIMA](#)
[KAIYO](#)
[YOKOSUKA](#)
[MIRAI](#)
[KAIREI](#)
[CHIKYU](#)
[KAIMEI](#)
[SHINSEI MARU](#)
[HAKUHO MARU](#)

Information of the Submersibles

[KAIKO](#)
[SHINKAI 2000](#)
[SHINKAI 6500](#)
[DEEP TOW](#)
[HYPER-DOLPHIN](#)
[URASHIMA](#)
[YOKOSUKA DEEP TOW](#)
[6K Camera DEEP TOW](#)
[6K Sonar DEEP TOW](#)
[KM-ROV](#)
[POWER GRAB SAMPLER \(SHELL\)](#)
[POWER GRAB SAMPLER \(CLOW\)](#)
[BMS](#)

Go to a Cruise Information

Cruise ID:

Go to a Dive Information

Dive ID: