

MIRAI MR10-03 Leg2 Underway Thermosalinograph

Last Modified: 2017-06-29

[ReadMe](#)

[Observation
Data](#)

[Data Format](#)

Cruise ID: [MR10-03 Leg2](#)

Underway Thermosalinograph: Processed (DMO)-QCed

Data Policy: [JAMSTEC](#)

Observation Items: Temperature, Salinity, Dissolved Oxygen

Science Keywords:

OCEANS > OCEAN CHEMISTRY > OXYGEN
OCEANS > SALINITY/DENSITY > SALINITY
OCEANS > OCEAN > SEA SURFACE
TEMPERATURE TEMPERATURE

Cruise Report

http://www.godac.jamstec.go.jp/catalog/data/doc_catalog/media/MR10-03_leg1-2_all.pdf

For Using Data

Principal Investigator

Data Management Office

Use Constraints

See [Terms and Conditions](#) about constrain of use.

Data Citation

See [Terms and Conditions](#) about data citation.

Instrument

Instrument:

Continuous sea surface water
monitoring system (- MR10-03 Leg2)



Overview

Thermosalinograph measures the following surface parameters continuously.

- temperature
- salinity
- dissolved oxygen

Sea surface water is continuously pumped up at 4.5 meters depth to the sea surface monitoring laboratory and then flowed into each analysis equipment through a steel pipe and a vinyl-chloride pipe.

The flow rate of this system is controlled by some valves. Data are recorded in the personal computer.

System

- Temperature sensor
Model : SBE 3S, Sea-Bird Electronics, Inc.
Serial number : 032175
Measurement range : -5 to 35 deg-C (ITS-90)
Sensor location : Bow thruster room
- Salinity sensor
SEACAT THERMOSALINOGRAPH
Model : SBE-21, Sea-Bird Electronics, Inc.
Serial number : 2126391 - 3126
Measurement range : [temperature] -5 to +35 deg-C (ITS-90), [conductivity] 0 to 6.5 S/m
Sensor location : Sea surface monitoring laboratory
- DO sensor
Model : 2127A, Hach Ultra Analytics Japan Inc.
Serial number : 61230
Measurement range : 0 to 14 ppm
Sensor location : Sea surface monitoring laboratory

Data acquisition

Date/Time (UTC)	Start/Stop	Remarks
2010-05-13, 07:27	start	07-33.28N, 134-07.76E
2010-06-26, 06:26	stop	27-25.59N, 133-28.42E

Calibration Information

Calibration Information is as follows.

[Calibration Information](#)

Data processing

(1) Quality control

QCed data were added flag according to the NODC (National Oceanographic Data Center) quality control procedure.

- 1) The gradient check of adjacent depth data

Please see the site of NODC of the following link for quality control procedure in detail.

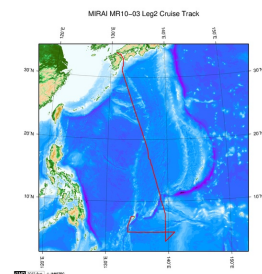
[QUALITY CONTROL AND PROCESSING OF HISTORICAL OCEANOGRAPHIC TEMPERATURE, SALINITY, AND OXYGEN DATA](#)

In addition, an abnormal value is identified by a visual check, and the data after visual QC is released.

Note

- (1) In this cruise, there is extra data (fluorescence intensity) in additional to temperature, salinity, dissolved oxygen that has been opened to the public. Please contact us from "Contact Us" above if necessary.

Related Information



[Enlarge Image](#)

MR10-03 Leg2

Ship Name: MIRAI

Period: 2010-05-13 - 2010-06-27

Chief Scientist: Hiroyuki Yamada (JAMSTEC)

Project Name: [MJO Research]

Proposal ▶ Observational Study on Air-Sea Interaction in the Tropical Western Pacific Ocean

Title:

Update History

2017-06-29	An observation data was registerd.
2014-08-08	An observation data was registerd.
2014-03-12	An observation data was registerd.
2012-09-28	An observation data was registerd.

JAMSTEC

[Site Policy](#)

[Privacy Policy](#)

[Application for Data and Samples](#)

[Data Policy](#)

[What's New](#)

[Update History](#)

[Feeds](#)

Lists

[Publication List](#)

[Amount of Public Info.](#)

Data

[Map Search](#)

[Data Tree](#)

[Detailed Search](#)

Information of the Ships

[NATSUSHIMA](#)

[KAIYO](#)

[YOKOSUKA](#)

[MIRAI](#)

[KAIREI](#)

[CHIKYU](#)

[KAIMEI](#)

[SHINSEI MARU](#)

[HAKUHO MARU](#)

Information of the Submersibles

[KAIKO](#)

[SHINKAI 2000](#)

[SHINKAI 6500](#)

[DEEP TOW](#)

[HYPER-DOLPHIN](#)

[URASHIMA](#)

[YOKOSUKA DEEP TOW](#)

[6K Camera DEEP TOW](#)

[6K Sonar DEEP TOW](#)

[KM-ROV](#)

[POWER GRAB](#)

[SAMPLER \(SHELL\)](#)

[POWER GRAB](#)

[SAMPLER \(CLOW\)](#)

[BMS](#)

Go to a Cruise Information

Cruise ID:

Go to a Dive Information

Dive ID:

Copyright 2011 Japan Agency for Marine-Earth Science and Technology



JAMSTEC

国立研究開発法人
海洋研究開発機構
JAPAN AGENCY FOR MARINE-EARTH SCIENCE AND TECHNOLOGY

MIRAI MR10-03 Leg2 Underway Thermosalinograph

Last Modified: 2017-06-29

[ReadMe](#) [Observation Data](#) [Data Format](#)

Cruise ID: [MR10-03 Leg2](#)

Underway Thermosalinograph: Processed (DMO)-QCed

Data Policy: [JAMSTEC](#)

TSG DMO (MR98-K01 - MR10-03)

Format Description for the Corrected Data

Please see the site of each cruise.

Format Description for the QCed Data (MR98-K01 - MR10-03)

Each data file contains one line header (meta data) followed by data lines for one day.

The number of data lines are recorded in the header.

Header part

No.	Column	Content	Format	Remarks
1	1	Header ID	a1	fixed as '#'
2	3 - 6	Data ID	a4	TSG
3	8 - 22	Cruise ID	a15	MYYY-(K)XX(_legx)
4	68 - 71	Number of data lines	i4	
5	72 - 73	Terminator	-	CR+LF

Data part

No.	Column	Content	Unit	Format	Remarks
1	1 - 8	Date	-	i8	YYYYMMDD (UTC)
2	10 - 13	Time	-	i4	hhmm (UTC)
3	15 - 23	Latitude	-	i2,a1,f5.2,a1	dd-mm.mmN(S)
4	25 - 34	Longitude	-	i3,a1,f5.2,a1	ddd-mm.mmE(W)
5	35 - 45	Temperature	deg-C	f11.4	ITS-90
6	46 - 56	Salinity	PSU	f11.4	PSS-78
7	57 - 67	Dissolved oxygen	mg/l	f11.4	
8	68 - 78	Flag	-	i11	1 - 6 : space 7 : flag of date/time 8 : flag of latitude/longitude 9 : flag of temperature 10 : flag of salinity 11 : flag of dissolved oxygen * reference : Definition of Quality Control Flags
9	79 - 80	Terminator	-	-	CR+LF

Definition of Quality Control Flags

1. Depth Flags

- 0 - accepted value
- 1 - error in recorded depth (same or less than previous depth)
- 2 - density inversion

2. Observed Level Flags

- N - missing value
- 0 - accepted value
- 1 - range outlier (outside of broad range check)
- 2 - failed inversion check
- 3 - failed gradient check
- 4 - zero anomaly
- 5 - failed combined gradient and inversion checks
- 6 - failed range and inversion checks
- 7 - failed range and gradient checks
- 8 - failed range and zero anomaly checks
- 9 - failed range and combined gradient and inversion checks
- A - failed visual check

* The check only about range check for Thermosalinograph data.

3. Date and time flag (Thermosalinograph only)

- 0 - accepted data and time
- 1 - failed duplicate/missing/incorrect date and time

4. Position flag (Thermosalinograph only)

- 0 - accepted position
- 1 - failed estimated ship speed check including missing/incorrect position

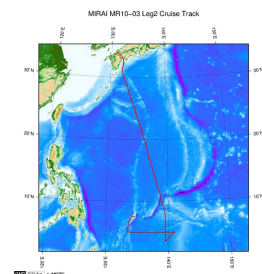
QCed data were added flag according to the NODC (National Oceanographic Data Center) quality control procedure, additionally visually checked. Please see the site of NODC of the following link for quality control procedure.

[QUALITY CONTROL AND PROCESSING OF HISTORICAL OCEANOGRAPHIC TEMPERATURE, SALINITY, AND OXYGEN DATA](#)

Sample Program

[ex_read.f](#)

Related Information



[Enlarge Image](#)

MR10-03 Leg2

Ship Name: MIRAI

Period: 2010-05-13 - 2010-06-27

Chief Scientist: Hiroyuki Yamada (JAMSTEC)

Project Name: [MJO Research]

Proposal ▶ Observational Study on Air-Sea Interaction in the Tropical Western Pacific Ocean

Title:

Update History

2017-06-29	An observation data was registerd.
2014-08-08	An observation data was registerd.
2014-03-12	An observation data was registerd.
2012-09-28	An observation data was registerd.

JAMSTEC

[Site Policy](#)

[Privacy Policy](#)

[Application for Data and Samples](#)

[Data Policy](#)

[What's New](#)

[Update History](#)

[Feeds](#)

Lists

[Publication List](#)

[Amount of Public Info.](#)

Data

[Map Search](#)

[Data Tree](#)

[Detailed Search](#)

Information of the Ships

[NATSUSHIMA](#)

[KAIYO](#)

[YOKOSUKA](#)

[MIRAI](#)

[KAIREI](#)

[CHIKYU](#)

[KAIMEI](#)

[SHINSEI MARU](#)

[HAKUHO MARU](#)

Information of the Submersibles

[KAIKO](#)

[SHINKAI 2000](#)

[SHINKAI 6500](#)

[DEEP TOW](#)

[HYPER-DOLPHIN](#)

[URASHIMA](#)

[YOKOSUKA DEEP TOW](#)

[6K Camera DEEP TOW](#)

[6K Sonar DEEP TOW](#)

[KM-ROV](#)

[POWER GRAB](#)

[SAMPLER \(SHELL\)](#)

[POWER GRAB](#)

[SAMPLER \(CLOW\)](#)

[BMS](#)

Go to a Cruise Information

Cruise ID:

Go to a Dive Information

Dive ID:

Copyright 2011 Japan Agency for Marine-Earth Science and Technology



JAMSTEC

国立研究開発法人
海洋研究開発機構
JAPAN AGENCY FOR MARINE-EARTH SCIENCE AND TECHNOLOGY

MIRAI MR10-03 Leg2 Underway Thermosalinograph

Last Modified: 2017-06-29

[ReadMe](#) [Observation Data](#) [Data Format](#)

Cruise ID: [MR10-03 Leg2](#)

Underway Thermosalinograph: Processed (DMO)-QCed

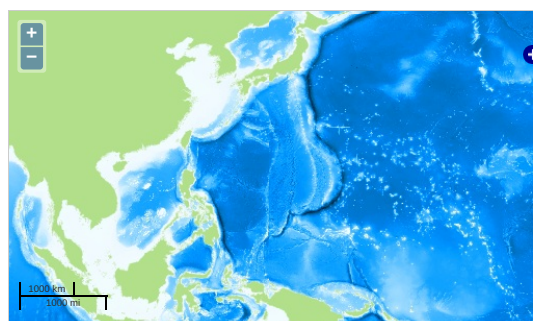
Data Policy: [JAMSTEC](#)

Observation Items: Temperature, Salinity, Dissolved Oxygen

Science Keywords:

OCEANS > OCEAN CHEMISTRY > OXYGEN
OCEANS > SALINITY/DENSITY > SALINITY
> OCEAN > SEA SURFACE
OCEANS TEMPERATURE TEMPERATURE

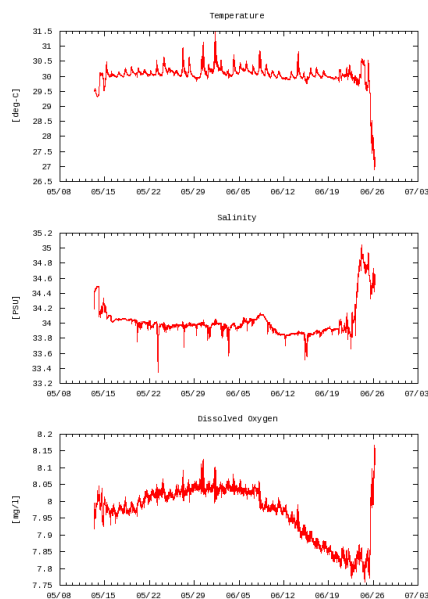
Observation Map



— ... Observation Line — ... Navigation ● ... Observation, Dive Point, Hole

Figures

MR10-03 Leg2: Underway Thermosalino Graph



Data List

[Add to Basket](#)

☐ File names

☐ 20100513.dat

☐ 20100514.dat

☐ 20100515.dat

☐ 20100516.dat

☐ 20100517.dat

☐ 20100518.dat

☐ 20100519.dat

☐ 20100520.dat

☐ 20100521.dat

☐ 20100522.dat

☐ 20100523.dat

☐ 20100524.dat

☐ 20100525.dat

☐ 20100526.dat

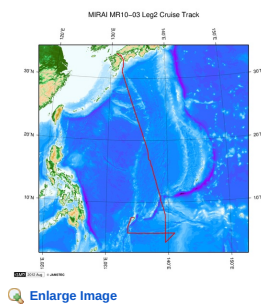
☐ 20100527.dat

☐ 20100528.dat

☐ 20100529.dat

File names
20100530.dat
20100531.dat
20100601.dat
20100602.dat
20100603.dat
20100604.dat
20100605.dat
20100606.dat
20100607.dat
20100608.dat
20100609.dat
20100610.dat
20100611.dat
20100612.dat
20100613.dat
20100614.dat
20100615.dat
20100616.dat
20100617.dat
20100618.dat
20100619.dat
20100620.dat
20100621.dat
20100622.dat
20100623.dat
20100624.dat
20100625.dat
20100626.dat
ex_read.f (Sample Program)

Related Information



MR10-03 Leg2

Ship Name: MIRAI
 Period: 2010-05-13 - 2010-06-27
 Chief Scientist: Hiroyuki Yamada (JAMSTEC)
 Project Name: [MJO Research]
 Proposal ▶ Observational Study on Air-Sea Interaction in the Tropical Western Pacific Ocean
 Title:

Update History

2017-06-29	An observation data was registered.
2014-08-08	An observation data was registered.
2014-03-12	An observation data was registered.
2012-09-28	An observation data was registered.

JAMSTEC
 Site Policy
 Privacy Policy
 Application for Data and Samples
 Data Policy
 What's New
 Update History
 Feeds

Lists
 Publication List
 Amount of Public Info.
 Data
 Map Search
 Data Tree
 Detailed Search

Information of the Ships
 NATSUSHIMA
 KAIYO
 YOKOSUKA
 MIRAI
 KAIREI
 CHIKYU
 KAIMEI
 SHINSEI MARU
 HAKUHO MARU

Information of the Submersibles
 KAIKO
 SHINKAI 2000
 SHINKAI 6500
 DEEP TOW
 HYPER-DOLPHIN
 URASHIMA
 YOKOSUKA DEEP TOW
 6K Camera DEEP TOW
 6K Sonar DEEP TOW
 KM-ROV
 POWER GRAB
 SAMPLER (SHELL)
 POWER GRAB
 SAMPLER (CLOW)
 BMS

Go to a Cruise Information

Cruise ID:

Go to a Dive Information

Dive ID: