

KAIREI KR08-05 Leg2 pH, DO, TOC, and ATP data in the water and sediment sample collected at Challenger Deep

Last Modified: 2012-10-26

[ReadMe](#) [Observation Data](#)

Cruise ID: [KR08-05 Leg2](#)

pH, DO, TOC, and ATP data in the water and sediment sample collected at Challenger Deep : Processed (PI)

Data Policy: [JAMSTEC](#)

Observation Items:

Science Keywords:

Data Information

DO and pH were measured on board by DO and pH meters. ATP in the sediment sample was measured by ATP assay kit supplied from Kikkoman Co. Ltd.
Total organic carbon (TOC) in the sediment sample was measured by TOC meter at Yakuruto Co. Ltd.

Cruise Report

http://www.godac.jamstec.go.jp/catalog/data/doc_catalog/media/KR08-05_leg1-2_all.pdf

For Using Data

Principal Investigator

Hideto Takami Ph.D. (BioGeos Microbial Genome Research Group)

Use Constraints

ATP data is not so accurate because sediment sample was measured on board.

Data Citation

Please quote the paper after publication

Instrument

Instrument:

pH meter

Instrument Information:

Thermo Co. Ltd



NO IMAGE

Instrument:

DO meter

Instrument Information:

Thermo Co. Ltd



NO IMAGE

Instrument:

Handy luminometer for ATP assay

Instrument Information:

Kikkoman



NO IMAGE

Instrument:

Instrument Information:



NO IMAGE

Sample

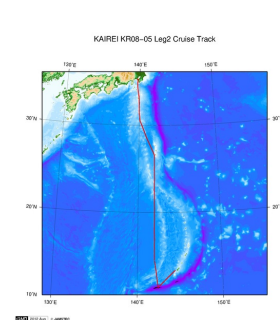
Water and sediment samples collected by Ashura system

Sample ID

Data Format

Excel

Related Information



[Enlarge Image](#)

[KR08-05 Leg2](#)

Ship Name: KAIKEI

Period: 2008-06-07 - 2008-06-13

Chief Scientist: Takashi Murashima (JAMSTEC)

Proposal 11,000m class Free Fall Mooring System

Title:

Update History

2012-10-26 An observation data was registered.

JAMSTEC

[Site Policy](#)
[Privacy Policy](#)
[Application for Data and Samples](#)
[Data Policy](#)

What's New

[Update History](#)
[Feeds](#)

Lists

[Publication List](#)
[Amount of Public Info.](#)

Data

[Map Search](#)
[Data Tree](#)
[Detailed Search](#)

Information of the Ships

[NATSUSHIMA](#)
[KAIYO](#)
[YOKOSUKA](#)
[MIRAI](#)
[KAIREI](#)
[CHIKYU](#)
[KAIMEI](#)
[SHINSEI MARU](#)
[HAKUHO MARU](#)

Information of the Submersibles

[KAIKO](#)
[SHINKAI 2000](#)
[SHINKAI 6500](#)
[DEEP TOW](#)
[HYPER-DOLPHIN](#)
[URASHIMA](#)
[YOKOSUKA DEEP TOW](#)
[6K Camera DEEP TOW](#)
[6K Sonar DEEP TOW](#)
[KM-ROV](#)
[POWER GRAB SAMPLER \(SHELL\)](#)
[POWER GRAB SAMPLER \(CLOW\)](#)
[BMS](#)

Go to a Cruise Information

Cruise ID:

Go to a Dive Information

Dive ID:

Copyright 2011 Japan Agency for Marine-Earth Science and Technology



JAMSTEC
JAPAN AGENCY FOR MARINE-EARTH SCIENCE AND TECHNOLOGY

国立研究開発法人
海洋研究開発機構

KAIREI KR08-05 Leg2 pH, DO, TOC, and ATP data in the water and sediment sample collected at Challenger Deep

Last Modified: 2012-10-26

[ReadMe](#)

[Observation Data](#)

Cruise ID: [KR08-05 Leg2](#)

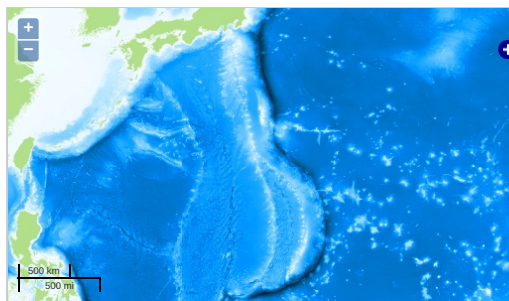
pH, DO, TOC, and ATP data in the water and sediment sample collected at Challenger Deep Processed (PI)

Data Policy: [JAMSTEC](#)

Observation Items:

Science Keywords:

Observation Map



Imagery reproduced from ...

... Observation Line ... Navigation ... Observation, Dive Point, Hole

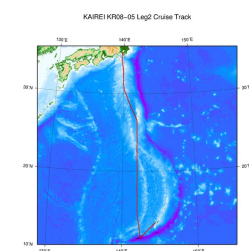
Data List

[Add to Basket](#)

File names

☐ KR08-05_leg2_sediment.xls

Related Information



[Enlarge Image](#)

KR08-05 Leg2

Ship Name: KAIKEI

Period: 2008-06-07 - 2008-06-13

Chief Scientist: Takashi Murashima (JAMSTEC)

Proposal: 11,000m class Free Fall Mooring System

Title:

Update History

2012-10-26

An observation data was registered.

JAMSTEC

[Site Policy](#)

[Privacy Policy](#)

[Application for Data and Samples](#)

[Data Policy](#)

[What's New](#)

[Update History](#)

[Feeds](#)

Lists

[Publication List](#)

[Amount of Public Info.](#)

Data

[Map Search](#)

[Data Tree](#)

[Detailed Search](#)

Information of the Ships

[NATSUSHIMA](#)

[KAIYO](#)

[YOKOSUKA](#)

[MIRAI](#)

[KAIREI](#)

[CHIKYU](#)

[KAIKEI](#)

[SHINSEI MARU](#)

[HAKUHO MARU](#)

Information of the Submersibles

[KAICO](#)

[SHINKAI 2000](#)

[SHINKAI 6500](#)

[DEEP TOW](#)

[HYPER-DOLPHIN](#)

[URASHIMA](#)

[YOKOSUKA DEEP TOW](#)

[6K Camera DEEP TOW](#)

[6K Sonar DEEP TOW](#)

[KM-ROV](#)

[POWER GRAB SAMPLER \(SHELL\)](#)

[POWER GRAB SAMPLER \(CLOW\)](#)

[BMS](#)

Go to a Cruise Information

Cruise ID:

Go to a Dive Information

Dive ID:

