

## KAIREI KR00-05 Shipboard Three Component Magnetometer (STCM)

Last Modified: 2019-08-26

[ReadMe](#) [Observation Data](#) [Data Format](#)

Cruise ID: [KR00-05](#)

Shipboard Three Component Magnetometer (STCM): Processed (DMO)-Corrected

Data Policy: [JAMSTEC](#)

Observation Items: X, Y and Z component of geomagnetic field anomaly, Absolute value of geomagnetic field anomaly

Science Keywords:

OCEANS > MARINE GEOPHYSICS > MARINE MAGNETICS  
SOLID EARTH > GEOMAGNETISM

### Cruise Report

[http://www.godac.jamstec.go.jp/catalog/data/doc\\_catalog/media/KR00-05\\_all.pdf](http://www.godac.jamstec.go.jp/catalog/data/doc_catalog/media/KR00-05_all.pdf)

#### For Using Data

##### Principal Investigator

Data Management Office

##### Use Constraints

See [Terms and Conditions](#) about constrain of use.

##### Data Citation

See [Terms and Conditions](#) about data citation.

### Period (UTC)

2000-08-10 02:31 – 2000-08-31 04:23

### Instrument

Instrument:

3 component magnetometer



### Overview

The data provided is for corrected three component geomagnetic field anomalies. Three-axes flux-gate sensors with ring-cored coils were fixed on the roof of the bridge.

They measure the following items :

- h-component : along track line component, positive for the bow direction pitch.
- s-component : across track line component, positive for the starboard side roll.
- v-component : vertical component, positive for the downward direction.

The effect of ship motion was eliminated by roll and pitch data which was provided by a tilt sensor. The apparent magnetic influence can be detected through a "Figure of 8 turn"(a pair of clockwise and anti-clockwise turns) on each cruise. If no Figure of 8 turn on the cruise was completed, the latest Figure of 8 turn from the previous cruise was applied (see section 4.). As a quality control, data of low reliability was removed (see section 5. for quality control criteria).

Synthetic geomagnetic field values were calculated from IGRF models.

### Measurement System

Manufacturer : Tierra Technica Ltd.

Type : SFG1214

Measurement range :  $\pm 100,000$  nT

Accuracy : less than 100 nT

Resolution : 1 nT

Location : No.2 Laboratory (Dry laboratory)

#### (2) Magnetic Sensor

Manufacturer : Tierra Technica Ltd.

Form : flux-gate sensors with ring-cored coils

Location : Compass deck

#### (3) Attitude sensor

Manufacturer : Tierra Technica Ltd.

Type : TVM-4

Measurement range :  $\pm 45$  degree

Accuracy :  $\pm 0.2$  degree (<30 degree)

Resolution : 0.0055 degree / LSB

Location : Gravimeter Room

#### (4) Gyro compass

Manufacturer : Yokogawa Denshikiki Co.,Ltd.

Type : CMZ500

Follow-Up Speed : 12 degree / sec

Accuracy :  $\pm 0.2$  degree \*Secant(Lat.)

Location : Bridge deck

### Duration of the Figure of 8 turn

15 KR00-05 cruise

in KRUU-05 cruise  
Date (UTC)  
2000/08/10 11:49:00 - 2000/08/10 12:05:00  
2000/08/10 22:40:00 - 2000/08/10 22:57:00

#### Data processing

The following corrections and calculations were performed.

##### (1) Ship magnetization correction

$Hob = ARPYF + Hp$  ---(i)  
Hob : Observed magnetic field vector (Ship coordinates)  
A : Effect of induced magnetization of the ship  
R : Matrix of rotation due to the roll  
P : Matrix of rotation due to the pitch  
Y : Matrix of rotation due to the heading  
F : Geomagnetic field vector  
Hp : Ship's permanent magnetic moment

Following the equation(i), we calculate the geomagnetic field F.

$RPYF = BHob + Hbp$  ---(ii)

B : coefficient of Figure of 8 turn

Hbp : Permanent magnetic field vector of the ship

Reference : Isezaki,N., A new shipboard three-component magnetometer, GEOPHYSICS. VOL.51,NO10(1986);P1992-1998

##### (2) International Geomagnetic Reference Field (IGRF)

Synthetic geomagnetic field values are calculated from IGRF 12th Generation models by using navigation data ; latitude, longitude and date.

Reference : IAGA Division V-MOD Geomagnetic Field Modeling[<http://www.ngdc.noaa.gov/IAGA/vmod/igrf.html>]

##### (3) Calculation of the geomagnetic field anomaly

$An = F - Figrf$

An : Geomagnetic field anomaly vector

F : Geomagnetic field vector

Figrf : Synthetic geomagnetic field vector from IGRF

##### (4) Quality control of data

Following criteria were used for removal of data of low reliability:

- Time error (inversion of time, continuation of same timestamps)
- Summation of the difference of heading by one second exceeding 20 degree per 5 minutes
- Ground speed of the ship below 3knot or exceeding 20knot
- X, Y, or Z component of geomagnetic field anomaly exceeding  $\pm 4000$ nT

##### (5) Filtering of the geomagnetic field anomaly

Due to the residual undulation of the ship, a 120 second length Gaussian filter was applied for each component of the geomagnetic field anomaly data.

##### (6) Output of the data

Time (UTC)

Latitude (degree)

Longitude (degree)

X : Northward (positive on the north) component of geomagnetic field anomaly (nT)

Y : Eastward (positive on the east) component of geomagnetic field anomaly (nT)

Z : Vertical (positive for downward) component of geomagnetic field anomaly (nT)

T : Absolute value of geomagnetic field anomaly (nT)

#### Coefficient of the Figure of 8 turn and Permanent magnetic field vector of the ship

This coefficient was calculated from the above-mentioned Figure of 8 turn

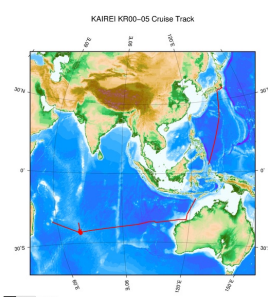
	1.1014	0.1086	-0.0740		-7673.3730
B=	-0.1109	1.3112	-0.0539	Hbp=	-9306.1047
	-0.0279	0.0046	0.9810		965.6256

#### Note

- (1) File naming rule: Cruise ID\_corr.stcm
- (2) Sampling rate: 10 seconds
- (3) Geodetic system: WGS84
- (4) If you would like the raw data set, please contact us from "Contact Us" above.

#### Related Information

☒ Cruise Data ☐ Dive Data



[Enlarge Image](#)

##### KR00-05

Ship Name: KAIKEI  
Period: 2000-07-20 - 2000-09-02  
Chief Scientist: Jun Hashimoto (JAMSTEC)

#### Update History

2019-08-26	An observation data was registerd.
------------	------------------------------------

2019-06-21  
2018-08-31

An observation data was registerd.  
An observation data was registerd.

#### JAMSTEC

[Site Policy](#)  
[Privacy Policy](#)  
[Application for Data and Samples](#)  
[Data Policy](#)  
**What's New**  
[Update History](#)  
[Feeds](#)

#### Lists

[Publication List](#)  
[Amount of Public Info.](#)  
**Data**  
[Map Search](#)  
[Data Tree](#)  
[Detailed Search](#)

#### Information of the Ships

[NATSUSHIMA](#)  
[KAIYO](#)  
[YOKOSUKA](#)  
[MIRAI](#)  
[KAIREI](#)  
[CHIKYU](#)  
[KAIMEI](#)  
[SHINSEI MARU](#)  
[HAKUHO MARU](#)

#### Information of the Submersibles

[KAIKO](#)  
[SHINKAI 2000](#)  
[SHINKAI 6500](#)  
[DEEP TOW](#)  
[HYPER-DOLPHIN](#)  
[URASHIMA](#)  
[YOKOSUKA DEEP TOW](#)  
[6K Camera DEEP TOW](#)  
[6K Sonar DEEP TOW](#)  
[KM-ROV](#)  
[POWER GRAB SAMPLER \(SHELL\)](#)  
[POWER GRAB SAMPLER \(CLOW\)](#)  
[BMS](#)

#### Go to a Cruise Information

Cruise ID:

#### Go to a Dive Information

Dive ID:

Copyright 2011 Japan Agency for Marine-Earth Science and Technology



**JAMSTEC**

国立研究開発法人  
海洋研究開発機構  
JAPAN AGENCY FOR MARINE-EARTH SCIENCE AND TECHNOLOGY

## KAIREI KR00-05 Shipboard Three Component Magnetometer (STCM)

Last Modified: 2019-08-26

[ReadMe](#) [Observation Data](#) [Data Format](#)

Cruise ID: [KR00-05](#)

Shipboard Three Component Magnetometer (STCM): Processed (DMO)-Corrected

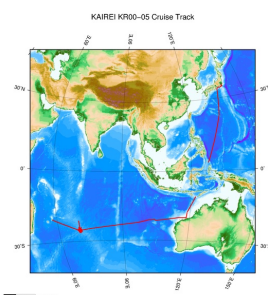
Data Policy: [JAMSTEC](#)

### STCM Corrected

No.	Column	Content	Format	Unit	Remarks
1	1 - 8	Date	i4,i2,i2		YYYYMMDD (UTC)
2	10 -15	Time	i2,i2,i2		hhmmss (UTC)
3	17 -25	Latitude	f9.5	degree	No sign for the northern hemisphere. Negative for the southern hemisphere.
4	27 -36	Longitude	f10.5	degree	No sign for eastern hemisphere. Negative for the western hemisphere.
5	38 -43	X component of geomagnetic field anomaly	f6.0	nT	Positive on the north
6	45 -50	Y component of geomagnetic field anomaly	f6.0	nT	Positive on the east
7	52 -57	Z component of geomagnetic field anomaly	f6.0	nT	Positive for downward
8	59 -64	Absolute value of geomagnetic field anomaly	f6.0	nT	

### Related Information

☒ Cruise Data ☐ Dive Data



[Enlarge Image](#)

#### KR00-05

Ship Name: KAIKEI

Period: 2000-07-20 - 2000-09-02

Chief Scientist: Jun Hashimoto (JAMSTEC)

### Update History

2019-08-26	An observation data was registered.
2019-06-21	An observation data was registered.
2018-08-31	An observation data was registered.

#### JAMSTEC

[Site Policy](#)  
[Privacy Policy](#)  
[Application for Data and Samples](#)  
[Data Policy](#)  
  
[What's New](#)  
[Update History](#)  
[Feeds](#)

#### Lists

[Publication List](#)  
[Amount of Public Info.](#)  
  
[Data](#)  
[Map Search](#)  
[Data Tree](#)  
[Detailed Search](#)

#### Information of the Ships

[NATSUSHIMA](#)  
[KAIYO](#)  
[YOKOSUKA](#)  
[MIRAI](#)  
[KAIREI](#)  
[CHIKYU](#)  
[KAIMEI](#)  
[SHINSEI MARU](#)  
[HAKUHO MARU](#)

#### Information of the Submersibles

[KAIKO](#)  
[SHINKAI 2000](#)  
[SHINKAI 6500](#)  
[DEEP TOW](#)  
[HYPER-DOLPHIN](#)  
[URASHIMA](#)  
[YOKOSUKA DEEP TOW](#)  
[6K Camera DEEP TOW](#)  
[6K Sonar DEEP TOW](#)  
[KM-ROV](#)  
[POWER GRAB SAMPLER \(SHELL\)](#)  
[POWER GRAB SAMPLER \(CLOW\)](#)  
[BMS](#)

#### Go to a Cruise Information

Cruise ID:

#### Go to a Dive Information

Dive ID:

## KAIREI KR00-05 Shipboard Three Component Magnetometer (STCM)

Last Modified: 2019-08-26

[ReadMe](#) [Observation Data](#) [Data Format](#)

Cruise ID: **KR00-05**

Shipboard Three Component Magnetometer (STCM): Processed (DMO)-Corrected

Data Policy: **JAMSTEC**

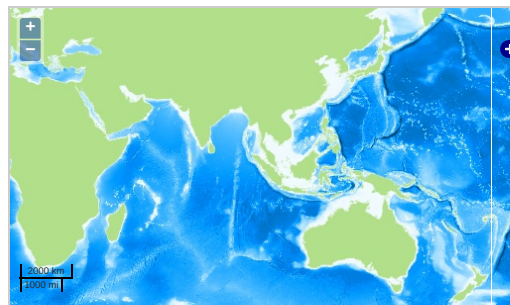
Observation Items: X, Y and Z component of geomagnetic field anomaly, Absolute value of geomagnetic field anomaly

Science Keywords:

OCEANS > MARINE GEOPHYSICS > MARINE  
MAGNETICS

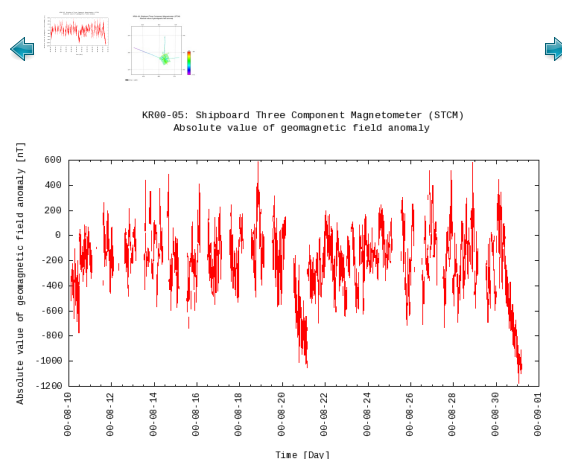
SOLID EARTH > GEOMAGNETISM

### Observation Map



... Observation Line ... Navigation ... Observation, Dive Point, Hole

### Figures



### Data List

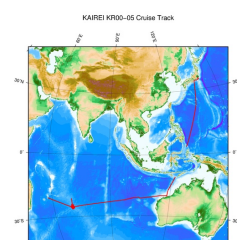
[Add to Basket](#)

File names

☐ KR00-05\_corr.stcm

### Related Information

[Cruise Data](#) [Dive Data](#)



[Enlarge Image](#)

**KR00-05**  
Ship Name: KAIREI  
Period: 2000-07-20 - 2000-09-02  
Chief Scientist: Jun Hashimoto (JAMSTEC)

### Update History

2019-08-26	An observation data was registered.
2019-06-21	An observation data was registered.
2018-08-31	An observation data was registered.

[Site Policy](#)  
[Privacy Policy](#)  
[Application for Data and Samples](#)  
[Data Policy](#)  
  
[What's New](#)  
[Update History](#)  
[Feeds](#)

[Publication List](#)  
[Amount of Public Info.](#)  
  
[Data](#)  
[Map Search](#)  
[Data Tree](#)  
[Detailed Search](#)

[NATSUSHIMA](#)  
[KAIYO](#)  
[YOKOSUKA](#)  
[MIRAI](#)  
[KAIREI](#)  
[CHIKYU](#)  
[KAIMEI](#)  
[SHINSEI MARU](#)  
[HAKUHO MARU](#)

[Submersibles](#)  
[KAIKO](#)  
[SHINKAI 2000](#)  
[SHINKAI 6500](#)  
[DEEP TOW](#)  
[HYPER-DOLPHIN](#)  
[URASHIMA](#)  
[YOKOSUKA DEEP TOW](#)  
[6K Camera DEEP TOW](#)  
[6K Sonar DEEP TOW](#)  
[KM-ROV](#)  
[POWER GRAB SAMPLER \(SHELL\)](#)  
[POWER GRAB SAMPLER \(CLOW\)](#)  
[BMS](#)

Cruise ID:

[Go to a Dive Information](#)

Dive ID: