

SHINSEI MARU KS-21-8 Underway Thermosalinograph

Last Modified: 2021-12-11

ReadMe Observation Data Data Format

Cruise ID: **KS-21-8**

Underway Thermosalinograph: Processed (DMO)-QCed

Data Policy: [JURCAOS-JAMSTEC](#)

Observation Items: Temperature, Salinity, Dissolved oxygen

Science Keywords:

OCEANS > OCEAN CHEMISTRY > OXYGEN
OCEANS > SALINITY/DENSITY > SALINITY
> OCEAN > SEA SURFACE
OCEANS TEMPERATURE TEMPERATURE

Cruise Report

http://www.godac.jamstec.go.jp/catalog/data/doc_catalog/media/KS-21-8_all.pdf

For Using Data

Principal Investigator

Data Management Office

Use Constraints

See [Terms and Conditions](#) about constrain of use.

Data Citation

See [Terms and Conditions](#) about data citation.

Instrument

Instrument:

Continuous sea surface water
monitoring system



Overview

Thermosalinograph measures the following surface parameters continuously.

- temperature
- salinity
- dissolved oxygen

Sea surface water is continuously pumped up at 2.9 meters depth to the No.2 Laboratory and then flowed into each analyzer.

The flow rate of this system is controlled.

System

- Temperature

Model: Pt100 N66M, Nippon Electric Instrument

S/N : TS14831

Measurement range : M (0-220 deg-C)

Accuracy : ± 0.15 deg-C (JIS Grade A)

Sensor location : ship bottom (mean draft: 4.5m)

- Salinity

Model : RINKO-AAQ170, JFE Advantech Co., Ltd.

S/N : 130

Measurement range : [Temperature] -3 to 45°C, [Conductivity] 0.5 to 70 mS/cm, [Salinity] 2 to 42 PSU

Accuracy : [Temperature] ± 0.01 °C, [Conductivity] ± 0.01 mS/cm, [Salinity] -

Resolution : [Temperature] 0.001°C, [Conductivity] 0.001 mS/cm, [Salinity] 0.001 PSU

Sensor location : No.2 Laboratory

- Dissolved Oxygen

Model : RINKO-AAQ170, JFE Advantech Co., Ltd.

S/N : 130

Measurement range : 0 to 200% (0 to 20 mg/L)

Accuracy : $\pm 2\%$ FS (± 0.4 mg/L)

Resolution : 0.01% (0.001mg/L)

Sensor location : No.2 Laboratory

- Fluorescence and Turbidity

Model : RINKO-AAQ170, JFE Advantech Co., Ltd.

S/N : 130

Measurement range : [Chlorophyll] 0~400ppb (Uranin reference), [Turbidity] 0~1000FTU

Accuracy : [Chlorophyll] Non-linearity $\pm 1\%$ FS (0~200ppb), [Turbidity] ± 0.3 FTU or $\pm 2\%$

Resolution : [Chlorophyll] 0.01 ppb, [Turbidity] 0.03 FTU

Sensor location : No.2 Laboratory

Number of significant figures of data

After considering the accuracy of the sensors, the significant digit of data was changed as in the following list.

Zero padding was applied to the temperature data published on this site.

Data	Raw (ASCII data)	On this web site
Temperature	0.1 [deg-C]	0.1 [deg-C]
Salinity	0.001 [PSU]	0.001 [PSU]
Dissolved oxygen	0.001 [%]	0.1 [μ mol/kg]

Data processing

DMO-QCed data are processed and flagged after the data check process shown below:

1) Data processing

The raw data was recorded every 30 seconds intervals.

The data published on this site was created as 1 minute data by extracting the raw data whose time within ± 15 seconds is closer to 00 second.

2) Dissolved oxygen data unit was converted from saturation to concentration ($\mu\text{mol/kg}$).

3) Range check

For details about range set of temperature, salinity and oxygen data, please refer the web site of NODC (National Oceanographic Data Center) from the following link for quality control procedure.

QUALITY CONTROL AND PROCESSING OF HISTORICAL OCEANOGRAPHIC TEMPERATURE, SALINITY, AND OXYGEN DATA

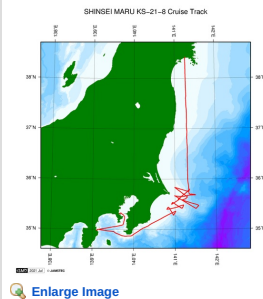
4) Visual check

If an value were extremely out from time-series plot of each variable or were affected by ambient air due to unstable flow of sampled water, it may be put flag "A" which means doubtful value.

About this data

This cruise obtained data of fluorescence and turbidity in addition to data of temperature, salinity and dissolved oxygen. Please [contact us](#) for usage of those data.

Related Information



KS-21-8

Ship Name: SHINSEI MARU

Period: 2021-05-13 - 2021-05-18

Chief Scientist: Sachihiko Itoh (The University of Tokyo)

Proposal Title: Distribution and mixing processes of riverine waters off Boso Peninsula

Title:

Update History

2021-12-11 An observation data was registered.

JAMSTEC

Site Policy
Privacy Policy
Application for Data and Samples
Data Policy

What's New
Update History
Feeds

Lists

Publication List
Amount of Public Info.

Data

Map Search
Data Tree
Detailed Search

Information of the Ships

NATSUSHIMA
KAIYO
YOKOSUKA
MIRAI
KAIREI
CHIKYU
KAIMEI
SHINSEI MARU
HAKUHO MARU

Information of the Submersibles

KAIKO
SHINKAI 2000
SHINKAI 6500
DEEP TOW
HYPER-DOLPHIN
URASHIMA
YOKOSUKA DEEP TOW
6K Camera DEEP TOW
6K Sonar DEEP TOW
KM-ROV
POWER GRAB
SAMPLER (SHELL)
POWER GRAB
SAMPLER (CLOW)
BMS

Go to a Cruise Information

Cruise ID:

Go to a Dive Information

Dive ID:

Copyright 2011 Japan Agency for Marine-Earth Science and Technology



JAMSTEC
JAPAN AGENCY FOR MARINE-EARTH SCIENCE AND TECHNOLOGY

国立研究開発法人
海洋研究開発機構

SHINSEI MARU KS-21-8 Underway Thermosalinograph

Last Modified: 2021-12-11

[ReadMe](#) [Observation Data](#) [Data Format](#)

Cruise ID: **KS-21-8**

Underway Thermosalinograph: Processed (DMO)-QCed

Data Policy: [JURCAOS-JAMSTEC](#)

TSG DMO

Format Description for the QCed Data

Each data file contains one line header and daily observation data.

Header part

No.	Column	Content	Format	Remarks
1	1	Header ID	a1	fixed as '#'
2	3 - 6	Data ID	a4	TSG
3	8 - 22	Cruise ID	a15	e.g. MRYX-XX_legx
4	68 - 71	Number of data lines	i4	
5	72 - 73	Terminator	-	CR+LF

Data part

No.	Column	Content	Unit	Format	Remarks
1	1 - 8	Date	-	i8	YYYYMMDD (UTC)
2	10 - 13	Time	-	i4	hhmm (UTC)
3	15 - 23	Latitude	-	i2,a1,f5.2,a1	dd-mm.mmN(S)
4	25 - 34	Longitude	-	i3,a1,f5.2,a1	ddd-mm.mmE(W)
5	35 - 45	Temperature	deg-C	f11.3	ITS-90
6	46 - 56	Salinity	PSU	f11.3	PSS-78
7	57 - 67	Dissolved oxygen	μmol/kg	f11.1	
8	68 - 78	Flag	-	i11	1 - 6 : space 7 : flag of date/time 8 : flag of latitude/longitude 9 : flag of temperature 10 : flag of salinity 11 : flag of dissolved oxygen
9	79 - 80	Terminator	-	-	CR+LF

* This format has been applied since MR10-04 cruise of R/V Mirai.

* Temperature, Salinity, Dissolved oxygen: Missing value is presented by '-5', and error value is presented by '-9'.

Definition of Quality Control Flags

1. Observed Level Flags

- 0 - accepted value
- 1 - range outlier (outside of broad range check)
- A - doubtful value
- N - missing value

2. Date and time flag (Thermosalinograph only)

- 0 - accepted data and time
- 1 - failed duplicate/missing/incorrect date and time

3. Position flag (Thermosalinograph only)

- 0 - accepted position
- 1 - failed estimated ship speed check including missing/incorrect position

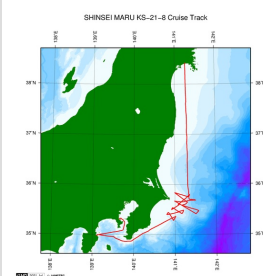
For details about range set of temperature, salinity and oxygen data, please refer the web site of NODC (National Oceanographic Data Center) from the following link for quality control procedure.

[QUALITY CONTROL AND PROCESSING OF HISTORICAL OCEANOGRAPHIC TEMPERATURE, SALINITY, AND OXYGEN DATA](#)

Sample Program

[ex_read2.f](#)

Related Information



[Enlarge Image](#)

KS-21-8

Ship Name: SHINSEI MARU
Period: 2021-05-13 - 2021-05-18
Chief Scientist: Sachiniko Itoh (The University of Tokyo)
Proposal: Distribution and mixing processes of riverine waters off Boso Peninsula
Title:

Update History

2021-12-11 An observation data was registerd.

Application for Data and Samples
Data Policy

What's New
Update History
Feeds

Data
Map Search
Data Tree
Detailed Search

KAIYO
YOKOSUKA
MIRAI
KAIREI
CHIKYU
KAIMEI
SHINSEI MARU
HAKUHO MARU

SHINKAI 2000
SHINKAI 6500
DEEP TOW
HYPER-DOLPHIN
URASHIMA
YOKOSUKA DEEP TOW
6K Camera DEEP TOW
6K Sonar DEEP TOW
KM-ROV
POWER GRAB
SAMPLER (SHELL)
POWER GRAB
SAMPLER (CLOW)
BMS

Go to a Dive Information

Dive ID:

Copyright 2011 Japan Agency for Marine-Earth Science and Technology



SHINSEI MARU KS-21-8 Underway Thermosalinograph

Last Modified: 2021-12-11

[ReadMe](#) [Observation Data](#) [Data Format](#)

Cruise ID: **KS-21-8**

Underway Thermosalinograph: Processed (DMO)-QCed

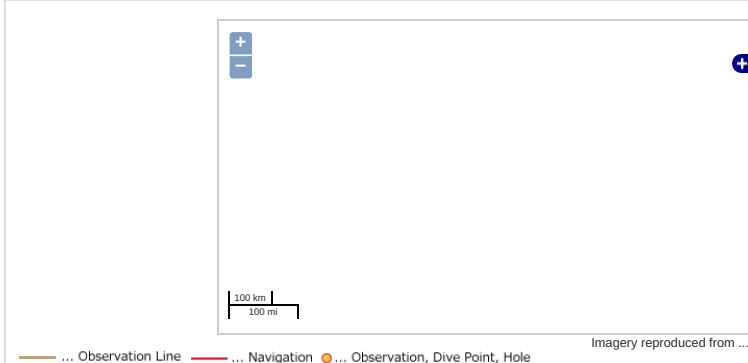
Data Policy: [JURCAOS-JAMSTEC](#)

Observation Items: Temperature, Salinity, Dissolved oxygen

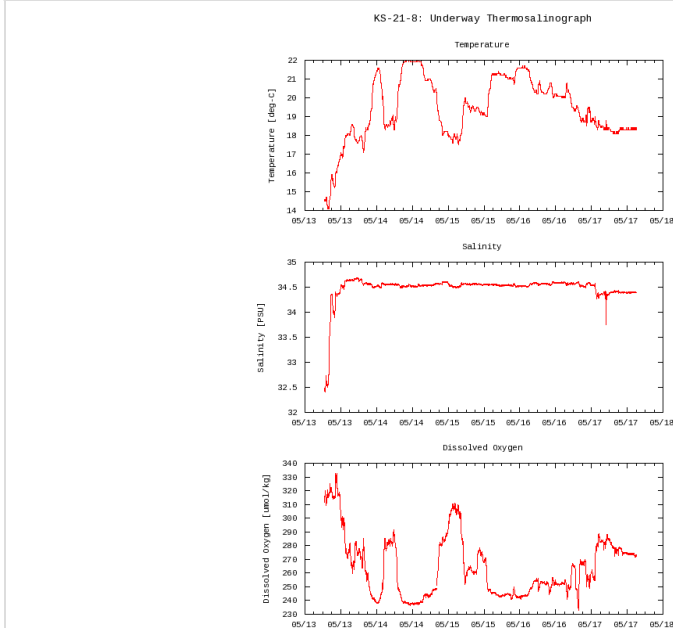
Science Keywords:

OCEANS > OCEAN CHEMISTRY > OXYGEN
OCEANS > SALINITY/DENSITY > SALINITY
> OCEAN > SEA SURFACE
OCEANS TEMPERATURE TEMPERATURE

Observation Map



Figures

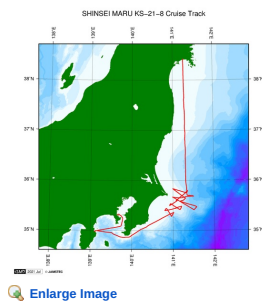


Data List

[Add to Basket](#)

- ☐ File names
- ☐ 20210513.dat
- ☐ 20210514.dat
- ☐ 20210515.dat
- ☐ 20210516.dat
- ☐ 20210517.dat
- ☐ ex_read2.f (Sample Program)

Related Information



[Enlarge Image](#)

KS-21-8

Ship Name: SHINSEI MARU
 Period: 2021-05-13 - 2021-05-18
 Chief Scientist: Sachihiro Itoh (The University of Tokyo)
 Proposal Title: Distribution and mixing processes of riverine waters off Boso Peninsula

Update History

2021-12-11	An observation data was registered.
------------	-------------------------------------

JAMSTEC

[Site Policy](#)
[Privacy Policy](#)
[Application for Data and Samples](#)
[Data Policy](#)

What's New

[Update History](#)
[Feeds](#)

Lists

[Publication List](#)
[Amount of Public Info.](#)

Data

[Map Search](#)
[Data Tree](#)
[Detailed Search](#)

Information of the Ships

[NATSUSHIMA](#)
[KAIYO](#)
[YOKOSUKA](#)
[MIRAI](#)
[KAIREI](#)
[CHIKYU](#)
[KAIMEI](#)
[SHINSEI MARU](#)
[HAKUHO MARU](#)

Information of the Submersibles

[KAIKO](#)
[SHINKAI 2000](#)
[SHINKAI 6500](#)
[DEEP TOW](#)
[HYPER-DOLPHIN](#)
[URASHIMA](#)
[YOKOSUKA DEEP TOW](#)
[6K Camera DEEP TOW](#)
[6K Sonar DEEP TOW](#)
[KM-ROV](#)
[POWER GRAB](#)
[SAMPLER \(SHELL\)](#)
[POWER GRAB](#)
[SAMPLER \(CLOW\)](#)
[BMS](#)

Go to a Cruise Information

Cruise ID:

Go to a Dive Information

Dive ID:

Copyright 2011 Japan Agency for Marine-Earth Science and Technology

 **JAMSTEC** 国立研究開発法人
 海洋研究開発機構
 JAPAN AGENCY FOR MARINE-EARTH SCIENCE AND TECHNOLOGY