

MIRAI MR11-05 Leg2 Underway Thermosalinograph

Last Modified: 2017-06-29

[ReadMe](#) [Observation Data](#) [Data Format](#)

Cruise ID: [MR11-05 Leg2](#)

Underway Thermosalinograph: Processed (DMO)-QCed

Data Policy: [JAMSTEC](#)

Observation Items: Temperature, Salinity, Dissolved oxygen

Science Keywords:

OCEANS > OCEAN CHEMISTRY > OXYGEN
OCEANS > SALINITY/DENSITY > SALINITY
> OCEAN > SEA SURFACE
OCEANS TEMPERATURE TEMPERATURE

Cruise Report

http://www.godac.jamstec.go.jp/catalog/data/doc_catalog/media/MR11-05_leg1-2_all.pdf

[For Using Data](#)

Principal Investigator

Data Management Office

Use Constraints

See [Terms and Conditions](#) about constrain of use.

Data Citation

See [Terms and Conditions](#) about data citation.

Instrument

Instrument:

Continuous sea surface water
monitoring system (MR10-04 Leg1 -
MR14-02)



Overview

Thermosalinograph measures the following surface parameters continuously.

- temperature
- salinity
- dissolved oxygen

Sea surface water is continuously pumped up at 4.5 meters depth to the sea surface monitoring laboratory and then flowed into each analysis equipment through a steel pipe and a vinyl-chloride pipe.

The flow rate of this system is controlled by some valves. Data are recorded in the personal computer.

System

- Temperature sensor
Model : SBE-38, Sea-Bird Electronics, Inc.
Serial number : 3852788-0457
Measurement range : -5 to 35 deg-C (ITS-90)
Sensor location : Bow thruster room
- Salinity sensor
MicroTSG (Thermosalinograph)
Model : SBE-45, Sea-Bird Electronics, Inc.
Serial number : 4552788-0264
Measurement range : [temperature] -5 to +35 deg-C (ITS-90), [conductivity] 0 to 7 S/m
Sensor location : Sea surface monitoring laboratory
- DO sensor
Model : OPTODE 3835, AANDERAA Instruments.
Serial number : 1519
Measurement range : 0 to 500 umol dcum
Sensor location : Sea surface monitoring laboratory

Number of significant figures of data

After considering the accuracy of the sensors, the significant digit of data was changed as in the following list.

| Data | Raw (ASCII data) | On this web site |
|------------------|------------------|------------------|
| Temperature | 0.0001 [deg-C] | 0.001 [deg-C] |
| Salinity | 0.0001 [PSU] | 0.001 [PSU] |
| Dissolved oxygen | 0.01 [umol/kg] | 0.1 [umol/kg] |

* The unit of the dissolved oxygen was changed from ml/l into umol/kg since MR10-04.

Data acquisition

| Date/Time (UTC) | Start/Stop | Remarks |
|-------------------|------------|-----------------------|
| 2011-07-17, 05:19 | start | 34-48.87N, 140-10.37E |
| 2011-08-03, 00:06 | stop | 40-53.74N, 141-55.96E |

Calibration Information

Calibration Information is as follows.

[Calibration Information](#)

Data processing

(1) Quality control

QCed data were added flag according to the NODC (National Oceanographic Data Center) quality control procedure.

1) The gradient check of adjacent depth data

Please see the site of NODC of the following link for quality control procedure in detail.

[QUALITY CONTROL AND PROCESSING OF HISTORICAL OCEANOGRAPHIC TEMPERATURE, SALINITY, AND OXYGEN DATA](#)

In addition, an abnormal value is identified by a visual check, and the data after visual QC is released.

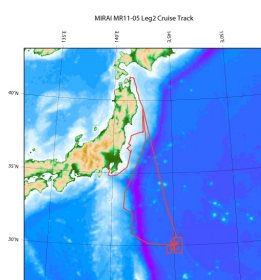
Note

- (1) The drift that exceeded the sensor specification (0.003PSU/month) turned out from the comparison between analysis data and the sensor data about the salinity data. Please see calibration information for details.

[Calibration Information](#)

Figure: The comparison between analysis data and the sensor data

Related Information



[Enlarge Image](#)

MR11-05 Leg2

Ship Name: MIRAI

Period: 2011-07-17 - 2011-08-04

Chief Scientist: Makio Honda (JAMSTEC)

Project Name: [Station S1, Station KEO]

Proposal ▶ Change in material cycles and ecosystem by the climate change and its feedback

Title:

Update History

| | |
|------------|-------------------------------------|
| 2017-06-29 | An observation data was registered. |
| 2015-06-04 | An observation data was registered. |
| 2014-04-09 | An observation data was registered. |
| 2012-09-28 | An observation data was registered. |

JAMSTEC
Site Policy
Privacy Policy
Application for Data and Samples
Data Policy
What's New
Update History
Feeds

Lists
Publication List
Amount of Public Info.

Data
Map Search
Data Tree
Detailed Search

Information of the Ships

NATSUSHIMA
KAIYO
YOKOSUKA
MIRAI
KAIREI
CHIKYU
KAIMEI
SHINSEI MARU
HAKUHO MARU

Information of the Submersibles

KAIKO
SHINKAI 2000
SHINKAI 6500
DEEP TOW
HYPER-DOLPHIN
URASHIMA
YOKOSUKA DEEP TOW
6K Camera DEEP TOW
6K Sonar DEEP TOW
KM-ROV
POWER GRAB
SAMPLER (SHELL)
POWER GRAB
SAMPLER (CLOW)
BMS

Go to a Cruise Information

Cruise ID:

Go to a Dive Information

Dive ID:



MIRAI MR11-05 Leg2 Underway Thermosalinograph

Last Modified: 2017-06-29

[ReadMe](#) [Observation Data](#) [Data Format](#)

Cruise ID: [MR11-05 Leg2](#)

Underway Thermosalinograph: Processed (DMO)-QCed

Data Policy: [JAMSTEC](#)

TSG DMO

Format Description for the QCed Data

Each data file contains one line header and daily observation data.

Header part

| No. | Column | Content | Format | Remarks |
|-----|---------|----------------------|--------|-------------------|
| 1 | 1 | Header ID | a1 | fixed as '#' |
| 2 | 3 - 6 | Data ID | a4 | TSG |
| 3 | 8 - 22 | Cruise ID | a15 | e.g. MRYX-XX_legx |
| 4 | 68 - 71 | Number of data lines | i4 | |
| 5 | 72 - 73 | Terminator | - | CR+LF |

Data part

| No. | Column | Content | Unit | Format | Remarks |
|-----|---------|------------------|---------|---------------|---|
| 1 | 1 - 8 | Date | - | i8 | YYYYMMDD (UTC) |
| 2 | 10 - 13 | Time | - | i4 | hhmm (UTC) |
| 3 | 15 - 23 | Latitude | - | i2,a1,f5.2,a1 | dd-mm.mmN(S) |
| 4 | 25 - 34 | Longitude | - | i3,a1,f5.2,a1 | ddd-mm.mmE(W) |
| 5 | 35 - 45 | Temperature | deg-C | f11.3 | ITS-90 |
| 6 | 46 - 56 | Salinity | PSU | f11.3 | PSS-78 |
| 7 | 57 - 67 | Dissolved oxygen | μmol/kg | f11.1 | |
| 8 | 68 - 78 | Flag | - | i11 | 1 - 6 : space 7 : flag of date/time 8 : flag of latitude/longitude 9 : flag of temperature 10 : flag of salinity 11 : flag of dissolved oxygen |
| 9 | 79 - 80 | Terminator | - | - | CR+LF |

* This format has been applied since MR10-04 cruise of R/V Mirai.

* Temperature, Salinity, Dissolved oxygen: Missing value is presented by '-5', and error value is presented by '-9'.

Definition of Quality Control Flags

1. Observed Level Flags

- 0 - accepted value
- 1 - range outlier (outside of broad range check)
- A - doubtful value
- N - missing value

2. Date and time flag (Thermosalinograph only)

- 0 - accepted date and time
- 1 - failed duplicate/missing/incorrect date and time

3. Position flag (Thermosalinograph only)

- 0 - accepted position
- 1 - failed estimated ship speed check including missing/incorrect position

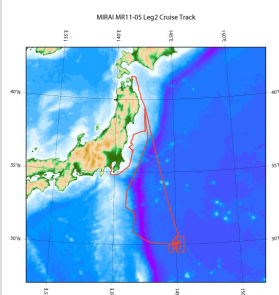
For details about range set of temperature, salinity and oxygen data, please refer the web site of NODC (National Oceanographic Data Center) from the following link for quality control procedure.

[QUALITY CONTROL AND PROCESSING OF HISTORICAL OCEANOGRAPHIC TEMPERATURE, SALINITY, AND OXYGEN DATA](#)

Sample Program

[ex_read2.f](#)

Related Information



[Enlarge Image](#)

MR11-05 Leg2

Ship Name: MIRAI
Period: 2011-07-17 - 2011-08-04
Chief Scientist: Makio Honda (JAMSTEC)
Project Name: [Station S1, Station KEO]
Proposal ▶ Change in material cycles and ecosystem by the climate change and its feedback
Title:

Update History

| | |
|------------|------------------------------------|
| 2017-06-29 | An observation data was registerd. |
| 2015-06-04 | An observation data was registerd. |
| 2014-04-09 | An observation data was registerd. |
| 2012-09-28 | An observation data was registerd. |

JAMSTEC
Site Policy
Privacy Policy
Application for Data and Samples
Data Policy

What's New
Update History
Feeds

Lists
Publication List
Amount of Public Info.

Data
Map Search
Data Tree
Detailed Search

Information of the Ships
NATSUSHIMA
KAIYO
YOKOSUKA
MIRAI
KAIREI
CHIKYU
KAIMEI
SHINSEI MARU
HAKUHO MARU

Information of the Submersibles
KAIKO
SHINKAI 2000
SHINKAI 6500
DEEP TOW
HYPER-DOLPHIN
URASHIMA
YOKOSUKA DEEP TOW
6K Camera DEEP TOW
6K Sonar DEEP TOW
KM-ROV
POWER GRAB
SAMPLER (SHELL)
POWER GRAB
SAMPLER (CLOW)
BMS

Go to a Cruise Information

Cruise ID:

Go to a Dive Information

Dive ID:

Copyright 2011 Japan Agency for Marine-Earth Science and Technology



JAMSTEC
JAPAN AGENCY FOR MARINE-EARTH SCIENCE AND TECHNOLOGY

国立研究開発法人
海洋研究開発機構

MIRAI MR11-05 Leg2 Underway Thermosalinograph

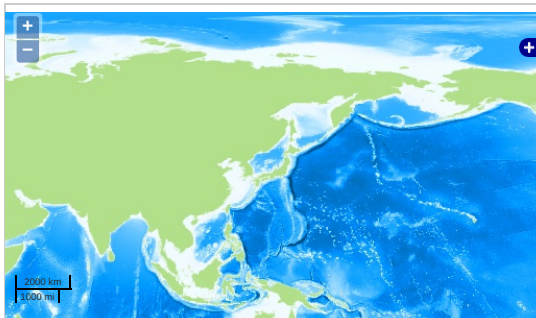
Last Modified: 2017-06-29

[ReadMe](#) [Observation Data](#) [Data Format](#)

Cruise ID: [MR11-05 Leg2](#)
Underway Thermosalinograph: Processed (DMO)-QCed
Data Policy: [JAMSTEC](#)
Observation Items: Temperature, Salinity, Dissolved oxygen

Science Keywords:
OCEANS > OCEAN CHEMISTRY > OXYGEN
OCEANS > SALINITY/DENSITY > SALINITY
OCEANS > OCEAN > SEA SURFACE TEMPERATURE
TEMPERATURE

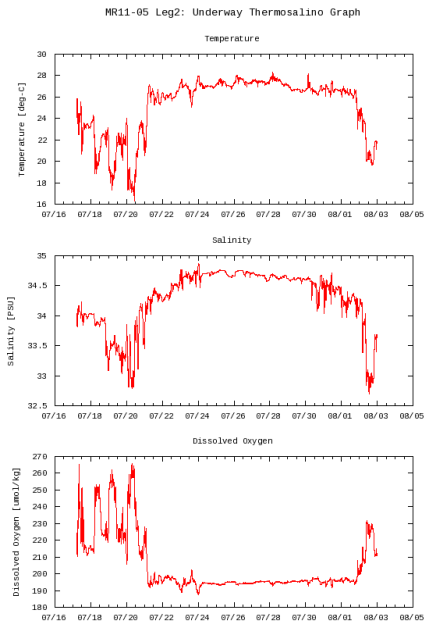
Observation Map



... Observation Line ... Navigation ... Observation, Dive Point, Hole

Imagery reproduced from ...

Figures

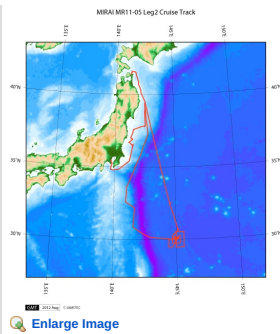


Data List

Add to Basket

| <input type="checkbox"/> File names |
|--|
| <input type="checkbox"/> 20110717.dat |
| <input type="checkbox"/> 20110718.dat |
| <input type="checkbox"/> 20110719.dat |
| <input type="checkbox"/> 20110720.dat |
| <input type="checkbox"/> 20110721.dat |
| <input type="checkbox"/> 20110722.dat |
| <input type="checkbox"/> 20110723.dat |
| <input type="checkbox"/> 20110724.dat |
| <input type="checkbox"/> 20110725.dat |
| <input type="checkbox"/> 20110726.dat |
| <input type="checkbox"/> 20110727.dat |
| <input type="checkbox"/> 20110728.dat |
| <input type="checkbox"/> 20110729.dat |
| <input type="checkbox"/> 20110730.dat |
| <input type="checkbox"/> 20110731.dat |
| <input type="checkbox"/> 20110801.dat |
| <input type="checkbox"/> 20110802.dat |
| <input type="checkbox"/> 20110803.dat |
| <input type="checkbox"/> ex_read2.f (Sample Program) |

Related Information



MR11-05 Leg2

Ship Name: MIRAI

Period: 2011-07-17 - 2011-08-04

Chief Scientist: Makio Honda (JAMSTEC)

Project Name: [Station S1, Station KEO]

Proposal ▶ Change in material cycles and ecosystem by the climate change and its feedback

Title:

Update History

| | |
|------------|-------------------------------------|
| 2017-06-29 | An observation data was registered. |
| 2015-06-04 | An observation data was registered. |
| 2014-04-09 | An observation data was registered. |
| 2012-09-28 | An observation data was registered. |

JAMSTEC

Site Policy

Privacy Policy

Application for Data and Samples

Data Policy

What's New

Update History

Feeds

Lists

Publication List

Amount of Public Info.

Data

Map Search

Data Tree

Detailed Search

Information of the Ships

NATSUSHIMA

KAIYO

YOKOSUKA

MIRAI

KAIREI

CHIKYU

KAIIMEI

SHINSEI MARU

HAKUHO MARU

Information of the Submersibles

KAIKO

SHINKAI 2000

SHINKAI 6500

DEEP TOW

HYPER-DOLPHIN

URASHIMA

YOKOSUKA DEEP TOW

6K Camera DEEP TOW

6K Sonar DEEP TOW

KM-ROV

POWER GRAB

SAMPLER (SHELL)

POWER GRAB

SAMPLER (CLOW)

BMS

Go to a Cruise Information

Cruise ID:

Go to a Dive Information

Dive ID:

Copyright 2011 Japan Agency for Marine-Earth Science and Technology



JAMSTEC

国立研究開発法人
海洋研究開発機構
JAPAN AGENCY FOR MARINE-EARTH SCIENCE AND TECHNOLOGY