

MIRAI MR12-05 Leg2 Bathymetry (MBES)

Last Modified: 2017-04-11

[ReadMe](#) [Observation Data](#) [Data Format](#)

Cruise ID: [MR12-05 Leg2](#)

Bathymetry (MBES): Processed (PI)

Data Policy: [JAMSTEC](#)

Observation Items: Depth

Science Keywords:

OCEANS > BATHYMETRY/SEAFLOOR TOPOGRAPHY > BATHYMETRY
SOLID EARTH > GEOMORPHOLOGY

Cruise Report

http://www.godac.jamstec.go.jp/catalog/data/doc_catalog/media/MR12-05_leg1-3_all.pdf

For Using Data

Principal Investigator

Hiroshi Uchida (JAMSTEC)

Use Constraints

See [Terms and Conditions](#) about constrain of use.

Data Citation

See [Terms and Conditions](#) about data citation.

Instrument

Instrument:

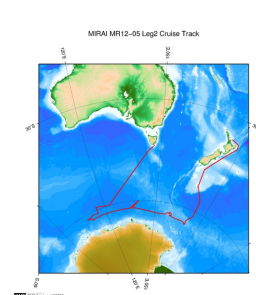
Multi-narrow beam echo sounder (- MR12-E01)



Overview

Please see the [Data book](#) for details of data.

Related Information



[Enlarge Image](#)

MR12-05 Leg2

Ship Name: MIRAI

Period: 2012-11-27 - 2013-01-03

Chief Scientist: Katsuro Katsumata (JAMSTEC)

Proposal ▶ WOCE-revisit in the western Pacific and Southern oceans

Title:

Update History

2017-04-11	An observation data was registered.
2015-05-31	An observation data was registered.
2014-06-17	An observation data was registered.
2014-01-07	An observation data was registered.

JAMSTEC
Site Policy
Privacy Policy
Application for Data and Samples
Data Policy
What's New
Update History
Feeds

Lists
Publication List
Amount of Public Info.
Data
Map Search
Data Tree
Detailed Search

Information of the Ships
NATSUSHIMA
KAIYO
YOKOSUKA
MIRAI
KAIREI
CHIKYU
KAIMEI
SHINSEI MARU
HAKUHO MARU

Information of the Submersibles
KAIKO
SHINKAI 2000
SHINKAI 6500
DEEP TOW
HYPER-DOLPHIN
URASHIMA
YOKOSUKA DEEP TOW
6K Camera DEEP TOW
6K Sonar DEEP TOW
KM-ROV
POWER GRAB
SAMPLER (SHELL)
POWER GRAB
SAMPLER (CLOW)
BMS

Go to a Cruise Information

Cruise ID:

Go to a Dive Information

Dive ID:

MIRAI MR12-05 Leg2 Bathymetry (MBES)

Last Modified: 2017-04-11

[ReadMe](#) [Observation Data](#) [Data Format](#)

Cruise ID: [MR12-05 Leg2](#)

Bathymetry (MBES): Processed (PI)

Data Policy: [JAMSTEC](#)

1. Gridded bathymetry data

MR1205L2_*_50m_Interp.grd

MR1205L3_*_50m_Interp.grd

netCDF formats (see Section 2.2 for more detail)

2. Along track bathymetry data

track_*_2012.dat

File format:

Column 1: Distance (km)

Column 2: Longitude (deg)

Column 3: Latitude (deg)

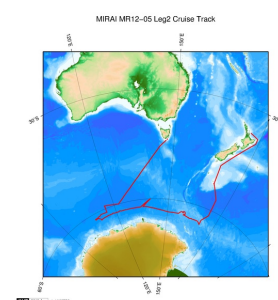
Column 4: Depth (m)

3. Contact

Hiroshi Uchida (JAMSTEC)

huchida@jamstec.go.jp

Related Information



[Enlarge Image](#)

MR12-05 Leg2

Ship Name: MIRAI

Period: 2012-11-27 - 2013-01-03

Chief Scientist: Katsuro Katsumata (JAMSTEC)

Proposal ▶ WOCE-revisit in the western Pacific and Southern oceans

Title:

Update History

2017-04-11	An observation data was registerd.
2015-05-31	An observation data was registerd.
2014-06-17	An observation data was registerd.
2014-01-07	An observation data was registerd.

JAMSTEC

[Site Policy](#)
[Privacy Policy](#)
[Application for Data and Samples](#)
[Data Policy](#)

[What's New](#)
[Update History](#)
[Feeds](#)

Lists

[Publication List](#)
[Amount of Public Info.](#)

[Data](#)
[Map Search](#)
[Data Tree](#)
[Detailed Search](#)

Information of the Ships

NATSUSHIMA
KAIYO
YOKOSUKA
MIRAI
KAIREI
CHIKYU
KAIMEI
SHINSEI MARU
HAKUHO MARU

Information of the Submersibles

KAIKO
SHINKAI 2000
SHINKAI 6500
DEEP TOW
HYPER-DOLPHIN
URASHIMA
YOKOSUKA DEEP TOW
6K Camera DEEP TOW
6K Sonar DEEP TOW
KM-ROV
POWER GRAB SAMPLER (SHELL)
POWER GRAB SAMPLER (CLOW)
BMS

Go to a Cruise Information

Cruise ID:

Go to a Dive Information

Dive ID:

MIRAI MR12-05 Leg2 Bathymetry (MBES)

Last Modified: 2017-04-11

[ReadMe](#) [Observation Data](#) [Data Format](#)

Cruise ID: [MR12-05 Leg2](#)

Bathymetry (MBES): Processed (PI)

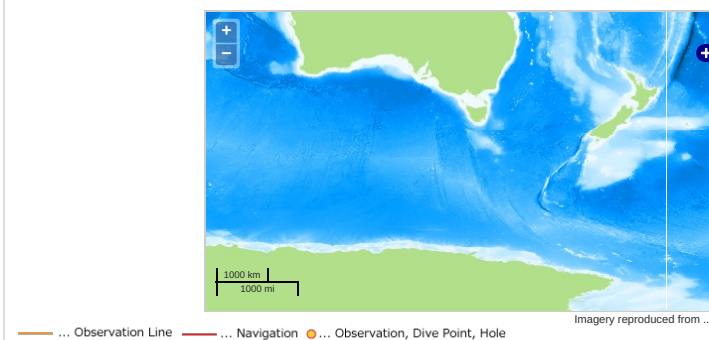
Data Policy: [JAMSTEC](#)

Observation Items: Depth

Science Keywords:

OCEANS > BATHYMETRY/SEAFLOOR TOPOGRAPHY > BATHYMETRY
SOLID EARTH > GEOMORPHOLOGY

Observation Map



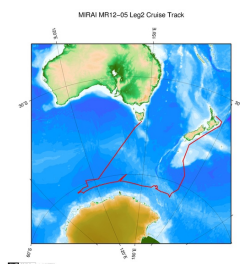
Data List

[Add to Basket](#)

File names

☐ MR1205L2.zip
☐ track_i09s_2012.txt
☐ track_p14s_2012.txt
☐ track_s04i-e_2012.txt
☐ track_s04i-w_2012.txt
☐ track_s04j_2012.txt

Related Information



MR12-05 Leg2

Ship Name: MIRAI

Period: 2012-11-27 - 2013-01-03

Chief Scientist: Katsuro Katsumata (JAMSTEC)

Proposal ▶ WOCE-revisit in the western Pacific and Southern oceans

Title:

[Enlarge Image](#)

Update History

2017-04-11	An observation data was registered.
2015-05-31	An observation data was registered.
2014-06-17	An observation data was registered.
2014-01-07	An observation data was registered.

JAMSTEC

[Site Policy](#)
[Privacy Policy](#)
[Application for Data and Samples](#)
[Data Policy](#)
[What's New](#)
[Update History](#)
[Feeds](#)

Lists

[Publication List](#)
[Amount of Public Info.](#)
[Data](#)
[Map Search](#)
[Data Tree](#)
[Detailed Search](#)

Information of the Ships

NATSUSHIMA
KAIYO
YOKOSUKA
MIRAI
KAIREI
CHIKYU
KAIMEI
SHINSEI MARU
HAKUHO MARU

Information of the Submersibles

KAIKO
SHINKAI 2000
SHINKAI 6500
DEEP TOW
HYPER-DOLPHIN
URASHIMA
YOKOSUKA DEEP TOW
6K Camera DEEP TOW
6K Sonar DEEP TOW
KM-ROV
POWER GRAB SAMPLER (SHELL)
POWER GRAB SAMPLER (CLOW)
BMS

Go to a Cruise Information

Cruise ID:

Go to a Dive Information

Dive ID:



JAMSTEC 国立研究開発法人
海洋研究開発機構
JAPAN AGENCY FOR MARINE-EARTH SCIENCE AND TECHNOLOGY