

YOKOSUKA YK08-04 Shipboard Three Component Magnetometer (STCM)

Last Modified: 2012-10-25

ReadMe

Cruise ID: [YK08-04](#)

Shipboard Three Component Magnetometer (STCM): Raw

Data Policy: [JAMSTEC](#)

Observation Items: X, Y and Z component of geomagnetic field anomaly, Absolute value of geomagnetic field anomaly

Science Keywords:

OCEANS > MARINE GEOPHYSICS > MARINE MAGNETICS
SOLID EARTH > GEOMAGNETISM

Cruise Report

http://www.godac.jamstec.go.jp/catalog/data/doc_catalog/media/YK08-04_all.pdf

For Using Data

Principal Investigator

Data Management Office

Use Constraints

See [Terms and Conditions](#) about constrain of use.

Data Citation

See [Terms and Conditions](#) about data citation.

Instrument

Instrument:

3 component magnetometer



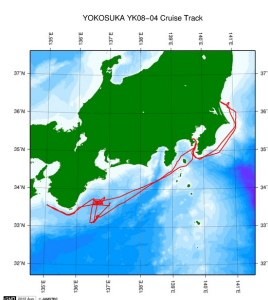
About this data

We have no plan to process the data due to equipment failure etc.

Please refer to the "Contact Us" if you wish to use the raw data.

Related Information

☒ Cruise Data ☐ Dive Data



[Enlarge Image](#)

YK08-04

Ship Name: YOKOSUKA

Period: 2008-04-04 - 2008-04-14

Chief Scientist: Juichiro Ashi (The University of Tokyo)

Proposal: Seafloor-Borehole Integrated Hydrologic Observation in the Nankai Seismogenic Zone

Title:

Update History

2012-10-25 An observation data was registerd.

JAMSTEC

[Site Policy](#)
[Privacy Policy](#)
[Application for Data and Samples](#)
[Data Policy](#)

What's New

[Update History](#)
[Feeds](#)

Lists

[Publication List](#)
[Amount of Public Info.](#)
[Data](#)
[Map Search](#)
[Data Tree](#)
[Detailed Search](#)

Information of the Ships

[NATSUSHIMA](#)
[KAIYO](#)
[YOKOSUKA](#)
[MIRAI](#)
[KAIREI](#)
[CHIKYU](#)
[KAIMEI](#)
[SHINSEI MARU](#)
[HAKUHO MARU](#)

Information of the Submersibles

[KAIKO](#)
[SHINKAI 2000](#)
[SHINKAI 6500](#)
[DEEP TOW](#)
[HYPER-DOLPHIN](#)
[URASHIMA](#)
[YOKOSUKA DEEP TOW](#)
[6K Camera DEEP TOW](#)
[6K Sonar DEEP TOW](#)
[KM-ROV](#)
[POWER GRAB SAMPLER \(SHELL\)](#)
[POWER GRAB SAMPLER \(CLOW\)](#)
[BMS](#)

Go to a Cruise Information

Cruise ID:

Go to a Dive Information

Dive ID:

YOKOSUKA YK08-04 Shipboard Three Component Magnetometer (STCM)

Last Modified: 2012-10-25

ReadMe

Cruise ID: [YK08-04](#)

Shipboard Three Component Magnetometer (STCM): Raw

Data Policy: [JAMSTEC](#)

Observation Items: X, Y and Z component of geomagnetic field anomaly, Absolute value of geomagnetic field anomaly

Science Keywords:

OCEANS > MARINE GEOPHYSICS > MARINE MAGNETICS
SOLID EARTH > GEOMAGNETISM

Cruise Report

http://www.godac.jamstec.go.jp/catalog/data/doc_catalog/media/YK08-04_all.pdf

For Using Data

Principal Investigator

Data Management Office

Use Constraints

See [Terms and Conditions](#) about constrain of use.

Data Citation

See [Terms and Conditions](#) about data citation.

Instrument

Instrument:

3 component magnetometer



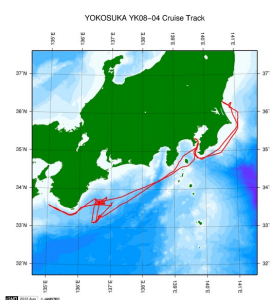
About this data

We have no plan to process the data due to equipment failure etc.

Please refer to the "Contact Us" if you wish to use the raw data.

Related Information

☒ Cruise Data ☐ Dive Data



[Enlarge Image](#)

YK08-04

Ship Name: YOKOSUKA

Period: 2008-04-04 - 2008-04-14

Chief Scientist: Juichiro Ashi (The University of Tokyo)

Proposal: Seafloor-Borehole Integrated Hydrologic Observation in the Nankai Seismogenic Zone

Title:

Update History

2012-10-25 An observation data was registerd.

JAMSTEC

[Site Policy](#)
[Privacy Policy](#)
[Application for Data and Samples](#)
[Data Policy](#)

What's New

[Update History](#)
[Feeds](#)

Lists

[Publication List](#)
[Amount of Public Info.](#)
[Data](#)
[Map Search](#)
[Data Tree](#)
[Detailed Search](#)

Information of the Ships

[NATSUSHIMA](#)
[KAIYO](#)
[YOKOSUKA](#)
[MIRAI](#)
[KAIREI](#)
[CHIKYU](#)
[KAIMEI](#)
[SHINSEI MARU](#)
[HAKUHO MARU](#)

Information of the Submersibles

[KAICO](#)
[SHINKAI 2000](#)
[SHINKAI 6500](#)
[DEEP TOW](#)
[HYPER-DOLPHIN](#)
[URASHIMA](#)
[YOKOSUKA DEEP TOW](#)
[6K Camera DEEP TOW](#)
[6K Sonar DEEP TOW](#)
[KM-ROV](#)
[POWER GRAB SAMPLER \(SHELL\)](#)
[POWER GRAB SAMPLER \(CLOW\)](#)
[BMS](#)

Go to a Cruise Information

Cruise ID:

Go to a Dive Information

Dive ID:

YOKOSUKA YK08-04 Shipboard Three Component Magnetometer (STCM)

Last Modified: 2012-10-25

ReadMe

Cruise ID: **YK08-04**

Shipboard Three Component Magnetometer (STCM): Raw

Data Policy: [JAMSTEC](#)

Observation Items: X, Y and Z component of geomagnetic field anomaly, Absolute value of geomagnetic field anomaly

Science Keywords:

OCEANS > MARINE GEOPHYSICS > MARINE
MAGNETICS
SOLID EARTH > GEOMAGNETISM

Cruise Report

http://www.godac.jamstec.go.jp/catalog/data/doc_catalog/media/YK08-04_all.pdf

For Using Data

Principal Investigator
Data Management Office

Use Constraints

See [Terms and Conditions](#) about constrain of use.

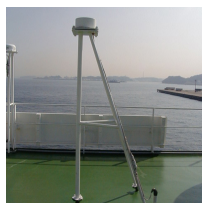
Data Citation

See [Terms and Conditions](#) about data citation.

Instrument

Instrument:

3 component magnetometer



About this data

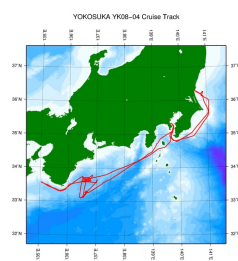
We have no plan to process the data due to equipment failure etc.

Please refer to the "Contact Us" if you wish to use the raw data.

Related Information

[Cruise Data](#)

[Dive Data](#)



[Enlarge Image](#)

YK08-04

Ship Name: YOKOSUKA

Period: 2008-04-04 - 2008-04-14

Chief Scientist: Juichiro Ashi (The University of Tokyo)

Proposal: Seafloor-Borehole Integrated Hydrologic Observation in the Nankai Seismogenic Zone

Title:

Update History

2012-10-25

An observation data was registered.

JAMSTEC

[Site Policy](#)

[Privacy Policy](#)

[Application for Data and](#)

[Samples](#)

[Data Policy](#)

[What's New](#)

[Update History](#)

[Feeds](#)

Lists

[Publication List](#)

[Amount of Public Info.](#)

[Data](#)

[Map Search](#)

[Data Tree](#)

[Detailed Search](#)

Information of the Ships

[NATSUSHIMA](#)

[KAIYO](#)

[YOKOSUKA](#)

[MIRAI](#)

[KAIREI](#)

[CHIKYU](#)

[KAIMEI](#)

[SHINSEI MARU](#)

[HAKUHO MARU](#)

Information of the Submersibles

[KAIKO](#)

[SHINKAI 2000](#)

[SHINKAI 6500](#)

[DEEP TOW](#)

[HYPER-DOLPHIN](#)

[URASHIMA](#)

[YOKOSUKA DEEP TOW](#)

[6K Camera DEEP TOW](#)

[6K Sonar DEEP TOW](#)

[KM-ROV](#)

[POWER GRAB SAMPLER](#)

[\(SHELL\)](#)

[POWER GRAB SAMPLER](#)

[\(CLOW\)](#)

[BMS](#)

Go to a Cruise Information

Cruise ID:

Go to a Dive Information

Dive ID: