

## MIRAI MR00-K06 Cloud Ceiling

Last Modified: 2014-07-12

[ReadMe](#) [Observation Data](#) [Data Format](#)

Cruise ID: [MR00-K06](#)

Cloud Ceiling: Raw

Data Policy: [JAMSTEC](#)

Observation Items: Cloud base height

Science Keywords:

ATMOSPHERE > CLOUDS > CLOUD  
BASE

### For Using Data

#### Principal Investigator

Data Management Office

#### Use Constraints

See [Terms and Conditions](#) about constrain of use.

#### Data Citation

See [Terms and Conditions](#) about data citation.

### Instrument

Instrument:

Ceilometer (- MR12-05Leg3)



### Overview

Ceilometer is the system that measures cloud base height by laser pulse emitted vertically.

Up to three levels of cloud base can be detected by measuring the change of strength of backscatter signal.

And the cloud base height is calculated from the elapsed time from laser pulse emission to backscatter detection.

In case the cloud base is obscured, it measures the vertical visibility.

### System

Manufacturer: Vaisala Inc.  
Type: CT25K Ver2.01  
Serial number: T18102  
Measurement range: up to 7500m  
Resolution: 15m  
Sampling rate: 15-120 seconds available (60sec as default)  
Accuracy: +2% or +1/2 \* Resolution  
Location: Compass deck bow side (18 meters high from sea surface)  
Recording software: CT-VIEW Ver1.05 (before MR01-K04)  
CT-VIEW Ver2.10 (MR01-K05 or later)

### Note

(1) File naming rule for CYMMDDHH.DAT(Ver1.05) and AYMMDDHH.DAT(Ver2.10).

C or A : Fixed as 'C' or 'A'

Y : Year in 1 digit

MM : Recording start month (UTC)

DD : Recording start day (UTC)

HH : Recording start time (UTC)

(2) Adjustment for the height : No sea surface level adjustment is applied to the raw data.

(3) Invalid data information : Ceilometer data files include the invalid data in this cruise as follows.

Date/Time : Date,Time data is invalid

Format : Format error data

DataLack : Lack of data

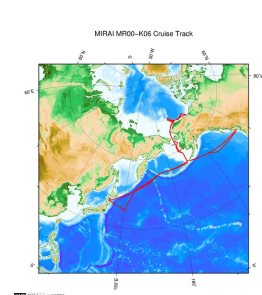
Start Stop

File name	Date,Time	File name	Date,Time	Remarks
-----------	-----------	-----------	-----------	---------

C0080511.DAT20000805,123830-C0080511.DAT20000805,124030	DataLack
C0080511.DAT20000805,124630-C0080617.DAT20000806,193029	DataLack
C0080617.DAT20000806,204729-C0080617.DAT20000806,204929	DataLack
C0080723.DAT20000808,041128-C0080817.DAT20000808,182901	DataLack
C0080923.DAT20000810,010300-C0080923.DAT20000810,010500	DataLack
C0081005.DAT20000810,101100-C0081005.DAT20000810,101400	DataLack
C0081117.DAT20000811,195459-C0081117.DAT20000811,195659	DataLack
C0081123.DAT20000812,040359-C0081123.DAT20000812,040559	DataLack
C0081223.DAT20000813,003458-C0081223.DAT20000813,003658	DataLack
C0081305.DAT20000813,105757-C0081305.DAT20000813,105958	DataLack
C0081317.DAT20000813,175557-C0081317.DAT20000813,175757	DataLack
C0081323.DAT20000814,025657-C0081323.DAT20000814,025857	DataLack
C0081423.DAT20000815,011956-C0081423.DAT20000815,012256	DataLack
C0081423.DAT20000815,025156-C0081511.DAT20000815,121554	DataLack
C0081517.DAT20000815,172455-C0081517.DAT20000815,172655	DataLack
C0081605.DAT20000816,091654-C0081605.DAT20000816,091854	DataLack
C0081711.DAT20000817,154053-C0081711.DAT20000817,154253	DataLack
C0082005.DAT20000820,090750-C0082005.DAT20000820,091050	DataLack
C0082023.DAT20000821,044550-C0082720.DAT20000828,002855	DataLack
C0082808.DAT20000828,121254-C0082808.DAT20000828,121454	DataLack

C0083002.DAT20000830,075853-C0083008.DAT20000830,080053DataLack  
C0090102.DAT20000901,024651-C0090108.DAT20000901,114451DataLack  
C0090220.DAT20000902,205850-C0090220.DAT20000902,210050DataLack  
C0090502.DAT20000905,054647-C0090502.DAT20000905,054847DataLack  
C0090602.DAT20000906,071646-C0090602.DAT20000906,071947DataLack  
C0090614.DAT20000906,140346-C0090614.DAT20000906,153046DataLack  
C0090614.DAT20000906,175646-C0090620.DAT20000906,201445DataLack  
C0090620.DAT20000907,013746-C0090620.DAT20000907,013946DataLack  
C0090820.DAT20000909,004444-C0090820.DAT20000909,004644DataLack  
C0091008.DAT20000910,095441-C0091008.DAT20000910,095641DataLack  
C0091614.DAT20000916,145732-C0091614.DAT20000916,180833DataLack  
C0091708.DAT20000917,124132-C0091708.DAT20000917,124332DataLack  
C0092320.DAT20000923,223323-C0092320.DAT20000923,223524DataLack  
C0092514.DAT20000925,141719-C0092514.DAT20000925,141919DataLack  
C0092602.DAT20000926,042820-C0092602.DAT20000926,043021DataLack  
C0092908.DAT20000929,102815-C0092908.DAT20000929,103015DataLack  
C0092914.DAT20000929,183114-C0092920.DAT20000929,203315DataLack  
C0092920.DAT20000929,220515-C0092920.DAT20000929,230316DataLack  
C0093014.DAT20000930,160414-C0093020.DAT20000930,200714DataLack  
C0093020.DAT20000930,220814-C0093020.DAT20000930,235214DataLack  
C0100120.DAT20001002,012312-C0100120.DAT20001002,012512DataLack  
C0100314.DAT20001003,162510-C0100420.DAT20001004,233509DataLack  
C0100420.DAT20001005,002109-C0100420.DAT20001005,015210DataLack  
C0100602.DAT20001006,054508-C0100602.DAT20001006,054708DataLack  
C0100620.DAT20001007,002008-C0100620.DAT20001007,002208DataLack  
C0100702.DAT20001007,075707-C0100708.DAT20001007,114506DataLack  
C0100708.DAT20001007,122506-C0100708.DAT20001007,122706DataLack  
C0100802.DAT20001008,030105-C0100902.DAT20001009,074805DataLack  
C0101008.DAT20001010,083403-C0101008.DAT20001010,083603DataLack

#### Related Information



[Enlarge Image](#)

#### MR00-K06

Ship Name: MIRAI  
Period: 2000-08-03 - 2000-10-13  
Chief Scientist: Takatoshi Takizawa (JAMSTEC)  
Project Name: [Arctic Ocean Climate System Reaserch]

#### Update History

2014-07-12	An observation data was registered.
2012-12-25	An observation data was registered.

JAMSTEC  
Site Policy  
Privacy Policy  
Application for Data and Samples  
Data Policy  
What's New  
Update History  
Feeds

Lists  
Publication List  
Amount of Public Info.  
Data  
Map Search  
Data Tree  
Detailed Search

Information of the Ships  
NATSUSHIMA  
KAIYO  
YOKOSUKA  
MIRAI  
KAIREI  
CHIKYU  
KAIMEI  
SHINSEI MARU  
HAKUHO MARU

Information of the Submersibles  
KAIKO  
SHINKAI 2000  
SHINKAI 6500  
DEEP TOW  
HYPER-DOLPHIN  
URASHIMA  
YOKOSUKA DEEP TOW  
6K Camera DEEP TOW  
6K Sonar DEEP TOW  
KM-ROV  
POWER GRAB  
SAMPLER (SHELL)  
POWER GRAB  
SAMPLER (CLOW)  
BMS

#### Go to a Cruise Information

Cruise ID:

#### Go to a Dive Information

Dive ID:

Copyright 2011 Japan Agency for Marine-Earth Science and Technology

 **JAMSTEC** 国立研究開発法人  
海洋研究開発機構  
JAPAN AGENCY FOR MARINE-EARTH SCIENCE AND TECHNOLOGY

## MIRAI MR00-K06 Cloud Ceiling

Last Modified: 2014-07-12

ReadMe Observation Data **Data Format**

Cruise ID: [MR00-K06](#)

Cloud Ceiling: Raw

Data Policy: [JAMSTEC](#)

### Ceiling Raw

The record length of the data file is 56 bytes.

No.	Column	Content	Format	Remarks
1	1 - 8	Date	i4,i2,i2	YYYYMMDD (UTC)
2	10 - 15	Time	i2,i2,i2	hhmmss (UTC)
3	17 - 19	Operating software	a3	'CT0' : CT-VIEW 'CL0' : CL-VIEW
4	20 - 21	Software version	i2	Version of operating software
5	22	Data status	i1	1: Cloud base height/vertical visibility data 2: Cloud base height/vertical visibility, backscatter signal 6: Cloud base height/vertical visibility, cloud amount/height of cloud layer 7: Cloud base height/vertical visibility, backscatter signal, cloud amount/height of cloud layer
6	23	Spare character	a1	
7	25	Detection status	i1	0: Clear 1: One cloud base detected 2: Two cloud bases detected 3: Three cloud bases detected 4: Full obscuration determined but no cloud base detected 5: Some obscuration detected but determined to transparent
8	26	Warning and alarm information	a1	0: Self-check OK W: At least one warning active, no alarms A: At least one alarm active See No.12:observation information
9	28 - 32	Lowest cloud base height or vertical visibility	i5	In the case of detection status is 1,2 or 3: Lowest cloud base height In the case of detection status is 4: Calculation of vertical visibility In the case of detection status is 0 or 5: ///// Unit: See No.12:observation information
10	34 - 38	Second lowest cloud base height or highest signal detected	i5	In the case of detection status is 2 or 3: Second lowest cloud base height In the case of detection status is 4: Maximum height that a signal was detected In the case of detection status is 0,1 or 5: ///// Unit: See No.12:observation information
11	40 - 44	Highest cloud base height	i5	In the case of detection status is 3: Highest cloud base height In the case of detection status is 0,1,2,4,5: ///// Unit: See No.12:observation information
12	46 - 53	Observation information	a8	*1
13	55 - 56	Terminator	a2	CR+LF

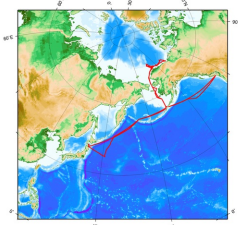
\*1: Observation information

The information is presented using 8 bytes characters. Each character, indicated in hexadecimal character, shows the following meanings;

Byte	Hexadecimal character (0:on, -:off)																Message(A:alarm, W:warning)
	0	1	2	3	4	5	6	7	8	9	A	B	C	D	E	F	
1	-	-	-	-	-	-	-	-	0	0	0	0	0	0	0	0	Laser temperature shut-off(A)
	-	-	-	-	0	0	0	0	-	-	-	0	0	0	0	0	Laser failure(A)
	-	-	0	0	-	-	0	0	-	-	0	0	-	-	0	0	Receiver failure(A)
	-	0	-	0	-	0	-	0	-	0	-	0	-	0	-	0	Voltage failure(A)
2	-	-	-	-	-	-	-	-	0	0	0	0	0	0	0	0	Spare(A)
	-	-	-	-	0	0	0	0	-	-	-	0	0	0	0	0	Spare(A)
	-	-	0	0	-	-	0	0	-	-	0	0	-	-	0	0	Spare(A)
	-	0	-	0	-	0	-	0	-	0	-	0	-	0	-	0	Spare(A)
3	-	-	-	-	-	-	-	-	0	0	0	0	0	0	0	0	Windows contaminated(W)
	-	-	-	-	0	0	0	0	-	-	-	0	0	0	0	0	Battery low(W)
	-	-	0	0	-	-	0	0	-	-	0	0	-	-	0	0	Laser power low(W)
	-	0	-	0	-	0	-	0	-	0	-	0	-	0	-	0	Laser temperature high or low(W)
4	-	-	-	-	-	-	-	-	0	0	0	0	0	0	0	0	Internal temperature high or low(W)
	-	-	-	-	0	0	0	0	-	-	-	0	0	0	0	0	Voltage high or low(W)
	-	-	0	0	-	-	0	0	-	-	0	0	-	-	0	0	Relative Humidity is > 85%(W)
	-	0	-	0	-	0	-	0	-	0	-	0	-	0	-	0	Receiver cross-talk compensation poor(W)
5	-	-	-	-	-	-	-	-	0	0	0	0	0	0	0	0	Blower suspect(W)
	-	-	-	-	0	0	0	0	-	-	-	0	0	0	0	0	Spare(W)
	-	-	0	0	-	-	0	0	-	-	0	0	-	-	0	0	Spare(W)
	-	0	-	0	-	0	-	0	-	0	-	0	-	0	-	0	Spare(W)
6	-	-	-	-	-	-	-	-	0	0	0	0	0	0	0	0	Blower is ON
	-	-	-	-	0	0	0	0	-	-	-	0	0	0	0	0	Blower heater is ON
	-	-	0	0	-	-	0	0	-	-	0	0	-	-	0	0	Internal heater is ON
	-	0	-	0	-	0	-	0	-	0	-	0	-	0	-	0	Units are METERS if ON , else FEET
7	-	-	-	-	-	-	-	-	0	0	0	0	0	0	0	0	Polling mode is ON
	-	-	-	-	0	0	0	0	-	-	-	0	0	0	0	0	Working from battery
	-	-	0	0	-	-	0	0	-	-	0	0	-	-	0	0	Single sequence mode is ON
	-	0	-	0	-	0	-	0	-	0	-	0	-	0	-	0	Manual settings are effective
8	-	-	-	-	-	-	-	-	0	0	0	0	0	0	0	0	Tilt angle is > 45 degrees
	-	-	-	-	0	0	0	0	-	-	-	0	0	0	0	0	High background radiance
	-	-	0	0	-	-	0	0	-	-	0	0	-	-	0	0	Manual blower control
	-	0	-	0	-	0	-	0	-	0	-	0	-	0	-	0	Spare

### Related Information

MIRAI MR00-K06 Cruise Track



Enlarge Image

**MR00-K06**  
Ship Name: MIRAI  
Period: 2000-08-03 - 2000-10-13  
Chief Scientist: Takatoshi Takizawa (JAMSTEC)  
Project Name: [Arctic Ocean Climate System Reaserch]

Update History	
2014-07-12	An observation data was registerd.
2012-12-25	An observation data was registerd.

**JAMSTEC**  
Site Policy  
Privacy Policy  
Application for Data and Samples  
Data Policy  
  
**What's New**  
Update History  
Feeds

**Lists**  
Publication List  
Amount of Public Info.  
  
**Data**  
Map Search  
Data Tree  
Detailed Search

**Information of the Ships**  
NATSUSHIMA  
KAIYO  
YOKOSUKA  
MIRAI  
KAIREI  
CHIKYU  
KAIMEI  
SHINSEI MARU  
HAKUHO MARU

**Information of the Submersibles**  
KAIKO  
SHINKAI 2000  
SHINKAI 6500  
DEEP TOW  
HYPER-DOLPHIN  
URASHIMA  
YOKOSUKA DEEP TOW  
6K Camera DEEP TOW  
6K Sonar DEEP TOW  
KM-ROV  
POWER GRAB  
SAMPLER (SHELL)  
POWER GRAB  
SAMPLER (CLOW)  
BMS

**Go to a Cruise Information**  
Cruise ID:

**Go to a Dive Information**  
Dive ID:

Copyright 2011 Japan Agency for Marine-Earth Science and Technology



**JAMSTEC**  
JAPAN AGENCY FOR MARINE-EARTH SCIENCE AND TECHNOLOGY

国立研究開発法人  
海洋研究開発機構

## MIRAI MR00-K06 Cloud Ceiling

Last Modified: 2014-07-12

[ReadMe](#) [Observation Data](#) [Data Format](#)

Cruise ID: [MR00-K06](#)

Cloud Ceiling: Raw

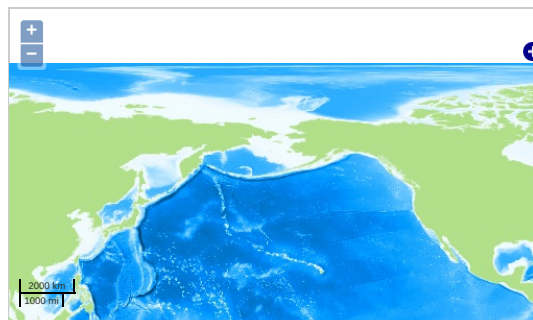
Data Policy: [JAMSTEC](#)

Observation Items: Cloud base height

Science Keywords:

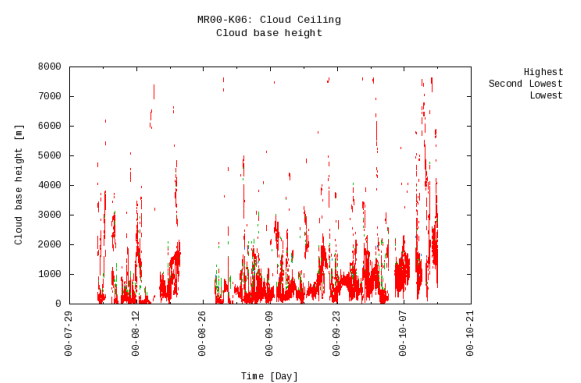
ATMOSPHERE > CLOUDS > CLOUD  
BASE

### Observation Map



Imagery reproduced from ...

### Figures



### Data List

[Add to Basket](#)

☐ File names

☐ C0080317.DAT

☐ C0080323.DAT

☐ C0080405.DAT

☐ C0080411.DAT

☐ C0080417.DAT

☐ C0080423.DAT

☐ C0080505.DAT

☐ C0080511.DAT

☐ C0080617.DAT

☐ C0080623.DAT

☐ C0080705.DAT

☐ C0080711.DAT

☐ C0080717.DAT

☐ C0080723.DAT

☐ C0080817.DAT

☐ C0080823.DAT

☐ C0080905.DAT

☐ C0080911.DAT

☐ C0080917.DAT

☐ C0080923.DAT

☐ C0081005.DAT

☐ C0081011.DAT

☐ C0081017.DAT

☐ C0081023.DAT

☐ C0081105.DAT

☐ C0081111.DAT

☐ C0081117.DAT

☐ C0081123.DAT

	0001123.DAT
	File names
	C0081205.DAT
	C0081211.DAT
	C0081217.DAT
	C0081223.DAT
	C0081305.DAT
	C0081311.DAT
	C0081317.DAT
	C0081323.DAT
	C0081405.DAT
	C0081411.DAT
	C0081417.DAT
	C0081423.DAT
	C0081511.DAT
	C0081517.DAT
	C0081523.DAT
	C0081605.DAT
	C0081611.DAT
	C0081617.DAT
	C0081623.DAT
	C0081705.DAT
	C0081711.DAT
	C0081717.DAT
	C0081723.DAT
	C0081805.DAT
	C0081811.DAT
	C0081817.DAT
	C0081823.DAT
	C0081905.DAT
	C0081911.DAT
	C0081917.DAT
	C0081923.DAT
	C0082005.DAT
	C0082011.DAT
	C0082017.DAT
	C0082023.DAT
	C0082720.DAT
	C0082802.DAT
	C0082808.DAT
	C0082814.DAT
	C0082820.DAT
	C0082902.DAT
	C0082908.DAT
	C0082914.DAT
	C0082920.DAT
	C0083002.DAT
	C0083008.DAT
	C0083014.DAT
	C0083020.DAT
	C0083102.DAT
	C0083108.DAT
	C0083114.DAT
	C0083120.DAT
	C0090102.DAT
	C0090108.DAT
	C0090114.DAT
	C0090120.DAT
	C0090202.DAT
	C0090208.DAT
	C0090214.DAT
	C0090220.DAT
	C0090302.DAT
	C0090308.DAT
	C0090314.DAT
	C0090320.DAT
	C0090402.DAT
	C0090408.DAT
	C0090414.DAT
	C0090420.DAT
	C0090502.DAT
	C0090508.DAT
	C0090514.DAT
	C0090520.DAT
	C0090602.DAT
	C0090608.DAT
	C0090614.DAT
	C0090620.DAT
	C0090702.DAT
	C0090708.DAT
	C0090714.DAT
	C0090720.DAT
	C0090802.DAT

File names
C0090808.DAT
C0090814.DAT
C0090820.DAT
C0090902.DAT
C0090908.DAT
C0090914.DAT
C0090920.DAT
C0091002.DAT
C0091008.DAT
C0091014.DAT
C0091020.DAT
C0091102.DAT
C0091108.DAT
C0091114.DAT
C0091120.DAT
C0091202.DAT
C0091208.DAT
C0091214.DAT
C0091220.DAT
C0091302.DAT
C0091308.DAT
C0091314.DAT
C0091320.DAT
C0091402.DAT
C0091408.DAT
C0091414.DAT
C0091420.DAT
C0091502.DAT
C0091508.DAT
C0091514.DAT
C0091520.DAT
C0091602.DAT
C0091608.DAT
C0091614.DAT
C0091620.DAT
C0091702.DAT
C0091708.DAT
C0091714.DAT
C0091720.DAT
C0091802.DAT
C0091808.DAT
C0091814.DAT
C0091820.DAT
C0091902.DAT
C0091908.DAT
C0091914.DAT
C0091920.DAT
C0092002.DAT
C0092008.DAT
C0092014.DAT
C0092020.DAT
C0092102.DAT
C0092108.DAT
C0092114.DAT
C0092120.DAT
C0092202.DAT
C0092208.DAT
C0092214.DAT
C0092220.DAT
C0092302.DAT
C0092308.DAT
C0092314.DAT
C0092320.DAT
C0092402.DAT
C0092408.DAT
C0092414.DAT
C0092420.DAT
C0092502.DAT
C0092508.DAT
C0092514.DAT
C0092520.DAT
C0092602.DAT
C0092608.DAT
C0092614.DAT
C0092620.DAT
C0092702.DAT
C0092708.DAT
C0092714.DAT
C0092720.DAT
C0092802.DAT
C0092808.DAT
C0092814.DAT

☐ [Etesmes.DAT](#)

☐ [C0092902.DAT](#)

☐ [C0092908.DAT](#)

☐ [C0092914.DAT](#)

☐ [C0092920.DAT](#)

☐ [C0093002.DAT](#)

☐ [C0093008.DAT](#)

☐ [C0093014.DAT](#)

☐ [C0093020.DAT](#)

☐ [C0100102.DAT](#)

☐ [C0100108.DAT](#)

☐ [C0100114.DAT](#)

☐ [C0100120.DAT](#)

☐ [C0100202.DAT](#)

☐ [C0100208.DAT](#)

☐ [C0100214.DAT](#)

☐ [C0100220.DAT](#)

☐ [C0100302.DAT](#)

☐ [C0100308.DAT](#)

☐ [C0100314.DAT](#)

☐ [C0100420.DAT](#)

☐ [C0100502.DAT](#)

☐ [C0100508.DAT](#)

☐ [C0100514.DAT](#)

☐ [C0100520.DAT](#)

☐ [C0100602.DAT](#)

☐ [C0100608.DAT](#)

☐ [C0100614.DAT](#)

☐ [C0100620.DAT](#)

☐ [C0100702.DAT](#)

☐ [C0100708.DAT](#)

☐ [C0100714.DAT](#)

☐ [C0100720.DAT](#)

☐ [C0100802.DAT](#)

☐ [C0100902.DAT](#)

☐ [C0100908.DAT](#)

☐ [C0100914.DAT](#)

☐ [C0100920.DAT](#)

☐ [C0101002.DAT](#)

☐ [C0101008.DAT](#)

☐ [C0101014.DAT](#)

☐ [C0101020.DAT](#)

☐ [C0101102.DAT](#)

☐ [C0101108.DAT](#)

☐ [C0101114.DAT](#)

☐ [C0101120.DAT](#)

☐ [C0101202.DAT](#)

☐ [C0101208.DAT](#)

☐ [C0101214.DAT](#)

☐ [C0101220.DAT](#)

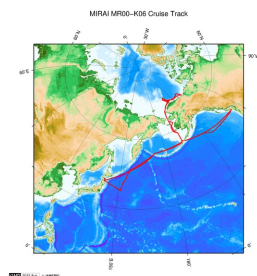
☐ [C0101302.DAT](#)

☐ [C0101308.DAT](#)

☐ [C0101314.DAT](#)

☐ [C0101320.DAT](#)

#### Related Information



[Enlarge Image](#)

#### MR00-K06

Ship Name: MIRAI

Period: 2000-08-03 - 2000-10-13

Chief Scientist: Takatoshi Takizawa (JAMSTEC)

Project Name: [Arctic Ocean Climate System Reaserch]

#### Update History

2014-07-12

An observation data was registerd.

2012-12-25

An observation data was registerd.

#### JAMSTEC

[Site Policy](#)

[Privacy Policy](#)

[Application for Data and Samples](#)

[Data Policy](#)

[What's New](#)

#### Lists

[Publication List](#)

[Amount of Public Info.](#)

#### Data

[Map Search](#)

[Data Tree](#)

#### Information of the Ships

[NATSUSHIMA](#)

[KAIGO](#)

[YOKOSUKA](#)

[MIRAI](#)

[KAIREI](#)

#### Information of the Submersibles

[KAIGO](#)

[SHINKAI 2000](#)

[SHINKAI 6500](#)

[DEEP TOW](#)

[HYPER-DOLPHIN](#)

#### Go to a Cruise Information

Cruise ID:

#### Go to a Dive Information



[Update History](#)  
[Feeds](#)

[Detailed Search](#)

[CHIKYU](#)  
[KAIMEI](#)  
[SHINSEI MARU](#)  
[HAKUHO MARU](#)

[URASHIMA](#)  
[YOKOSUKA DEEP TOW](#)  
[6K Camera DEEP TOW](#)  
[6K Sonar DEEP TOW](#)  
[KM-ROV](#)  
[POWER GRAB](#)  
[SAMPLER \(SHELL\)](#)  
[POWER GRAB](#)  
[SAMPLER \(CLOW\)](#)  
[BMS](#)

Dive ID:

Copyright 2011 Japan Agency for Marine-Earth Science and Technology

