

## KAIREI KR10-09 Expendable Bathythermograph (XBT)

Last Modified: 2019-09-07

[ReadMe](#) [Observation Data](#) [Data Format](#)

Cruise ID: [KR10-09](#)

Expendable Bathythermograph (XBT): Processed (DMO)-QCed

Data Policy: [JAMSTEC](#)

Observation Items: Depth, Temperature

Science Keywords:

OCEANS > OCEAN TEMPERATURE > WATER TEMPERATURE

Cruise Report

[http://www.godac.jamstec.go.jp/catalog/data/doc\\_catalog/media/KR10-09\\_all.pdf](http://www.godac.jamstec.go.jp/catalog/data/doc_catalog/media/KR10-09_all.pdf)

### For Using Data

#### Principal Investigator

Data Management Office

#### Use Constraints

See [Terms and Conditions](#) about constrain of use.

#### Data Citation

See [Terms and Conditions](#) about data citation.

### Instrument

Instrument:

XBT/XCTD



### Overview

Using XBT (eXpendable Bathy Thermograph) system, the vertical distribution of water temperature is observed during free fall of its probe part in the seawater. On board, the analogue signal is converted to the temperature by data processor and the data is stored in PC. Depth data is calculated from the elapsed time.

### System

#### (1) Launcher

Hand launcher

Manufacturer : Sippican, Inc.

Operation area : Rear upper deck

#### (2) Converter

Manufacturer : Tsurumi Seiki Co., LTD.

Location : Investigation room

Sampling rate : 50 msec

#### (3) XBT probe specifications

Probe Type	TSK T-5	TSK T-6	TSK T-7	TSK T-10
Temperature range [deg-C]	-2 to 35			
Temperature accuracy [deg-C]	+/- 0.2			
Temperature resolution [deg-C]	0.01			
Measurment depth [m]	1830	460	760	300
Depth accuracy [m]	5 or +/- 2% of depth; whichever is larger			
Maximum elapsed time [sec]	291	73	123	48
Rated ship speed [knot]	6	15	15	10

Since XBT carries no pressure sensor, we need to estimate depth from the elapsed time. The fall-rate equation is as follows.

$$Z = at + 10E^{-3} * bt^2$$

Where Z(m) is the depth and t(sec) is the elapsed time.

In addition, coefficients of the fall-rate equation are different by probe types.

Probe Type	TSK T-5	TSK T-6	TSK T-7	TSK T-10
Coefficient-a	6.828	6.691	6.691	6.301
Coefficient-b	-1.82	-2.25	-2.25	-2.16

\* Coefficients listed above are supplied by Sippican, Inc., in USA.

The list of an XBT type used in each cast is as follows.

Cast name	Probe Serial No.	Probe Type	Launcher	Converter
BT 004220100701		T-5	Hand	MT 120

Cast name	Probe Serial No.	Probe Type	Hand Launcher	Hand Converter
BT-004320100702	-	T-5	Hand	MK-130
BT-004520100703	-	T-5	Hand	MK-130
BT-004620100703	-	T-5	Hand	MK-130
BT-004720100704	-	T-5	Hand	MK-130
BT-004820100708	-	T-5	Hand	MK-130
BT-004920100709	-	T-5	Hand	MK-130
BT-005020100711	-	T-5	Hand	MK-130
BT-005120100718	-	T-5	Hand	MK-130
BT-005220100719	-	T-5	Hand	MK-130
BT-005320100720	-	T-5	Hand	MK-130
BT-005620100721	-	T-5	Hand	MK-130
BT-005920100724	-	T-5	Hand	MK-130

#### Data processing

(1) For sensor's stability, values of less than 1 m for temperature are replaced by missing values, respectively, based on manufacturer's recommendation.

(2) Quality control

QCed data were added flag according to the NODC (National Oceanographic Data Center) quality control procedure.

- 1) The gradient check of adjacent depth data
- 2) The broad range check set up at given ocean space and depth

Please see the site of NODC of the following link for quality control procedure in detail.

[QUALITY CONTROL AND PROCESSING OF HISTORICAL OCEANOGRAPHIC TEMPERATURE, SALINITY, AND OXYGEN DATA](#)

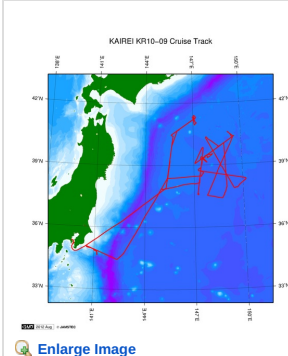
In addition, an abnormal value is identified by a visual check, and the data after visual QC is released.

#### Note

(1) It is reported that T-5 probes produced by Tsurumi Seiki Co. Ltd. (TSK T-5 probes) have a fall-rate bias. Please see the following about publication policy of XBT fall-rate bias correction data.

[Publication policy of XBT fall-rate bias correction data](#)

#### Related Information



**KR10-09**  
Ship Name: KAIREI  
Period: 2010-07-01 - 2010-07-28  
Chief Scientist: Gou Fujie (JAMSTEC)  
Project Name: [Seismic study]

[Enlarge Image](#)

#### Update History

2019-09-07	An observation data was registerd.
2017-06-29	An observation data was registerd.
2014-09-23	An observation data was registerd.
2014-03-25	An observation data was registerd.
2012-11-02	An observation data was registerd.

#### JAMSTEC

Site Policy  
Privacy Policy  
Application for Data and Samples  
Data Policy  
What's New  
Update History  
Feeds

#### Lists

Publication List  
Amount of Public Info.  
Data  
Map Search  
Data Tree  
Detailed Search

#### Information of the Ships

NATSUSHIMA  
KAIYO  
YOKOSUKA  
MIRAI  
KAIREI  
CHIKYU  
KAIMEI  
SHINSEI MARU  
HAKUHO MARU

#### Information of the Submersibles

KAIKO  
SHINKAI 2000  
SHINKAI 6500  
DEEP TOW  
HYPER-DOLPHIN  
URASHIMA  
YOKOSUKA DEEP TOW  
6K Camera DEEP TOW  
6K Sonar DEEP TOW  
KM-ROV  
POWER GRAB SAMPLER (SHELL)  
POWER GRAB SAMPLER (CLOW)  
BMS

#### Go to a Cruise Information

Cruise ID:

#### Go to a Dive Information

Dive ID:



## KAIREI KR10-09 Expendable Bathythermograph (XBT)

Last Modified: 2019-09-07

[ReadMe](#) | [Observation Data](#) | [Data Format](#)

 Cruise ID: [KR10-09](#)

Expendable Bathythermograph (XBT): Processed (DMO)-QCed

 Data Policy: [JAMSTEC](#)

### XBT DMO

Each data file contains one line header (meta data) followed by data lines for each cast.

The number of data lines are recorded in the header.

#### Header part

No.	Column	Content	Format	Remarks
1	1	Header ID	a1	fixed as '#'
2	3 - 6	Data ID	a4	XBT
3	8 - 22	Cruise ID	a15	
4	33 - 40	Date	i8	YYYYMMDD (UTC)
5	42 - 45	Time	i4	hhmm (UTC)
6	47 - 55	Latitude	i2,a1,f5.2,a1	dd-mm.mmN(S)
7	57 - 66	Longitude	i3,a1,f5.2,a1	ddd-mm.mmE(W)
8	68 - 71	Number of data lines	i4	
9	72 - 73	Terminator	-	CR+LF

#### Data part

No.	Column	Content	Unit	Format	Remarks
1	1 - 11	Depth	m	f11.1	
2	12 - 22	Temperature	deg-C	f11.2	ITS-90
3	45 - 55	Flag	-	i11	1 - 7 : space 8 : flag of depth 9 : flag of temperature 10 - 11 : space * reference : <a href="#">Definition of Quality Control Flags</a>
4	56 - 57	Terminator	-	-	CR+LF

Each contents of the data part is stored in 11 bytes.

Missing value is presented by '-5', and error value is presented by '-9'.

#### Definition of Quality Control Flags

##### 1. Depth Flags

- 0 - accepted value
- 1 - error in recorded depth ( same or less than previous depth )
- 2 - density inversion

##### 2. Observed Level Flags

- N - missing value
- 0 - accepted value
- 1 - range outlier ( outside of broad range check )
- 2 - failed inversion check
- 3 - failed gradient check
- 4 - zero anomaly
- 5 - failed combined gradient and inversion checks
- 6 - failed range and inversion checks
- 7 - failed range and gradient checks
- 8 - failed range and zero anomaly checks
- 9 - failed range and combined gradient and inversion checks
- A - failed visual check

\* Range and gradient check is performed to XBT data.

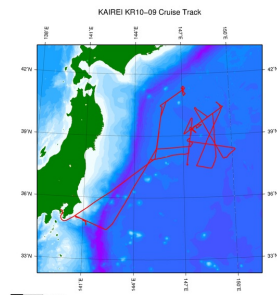
QCed data were added flag according to the NODC (National Oceanographic Data Center) quality control procedure, additionally visually checked. Please see the site of NODC of the following link for quality control procedure.

[QUALITY CONTROL AND PROCESSING OF HISTORICAL OCEANOGRAPHIC TEMPERATURE, SALINITY, AND OXYGEN DATA](#)

#### Sample Program

[ex\\_read2.f](#)

#### Related Information



[Enlarge Image](#)

#### KR10-09

Ship Name: KAIKEI  
Period: 2010-07-01 - 2010-07-28  
Chief Scientist: Gou Fujie (JAMSTEC)  
Project Name: [Seismic study]

#### Update History

2019-09-07	An observation data was registered.
2017-06-29	An observation data was registered.
2014-09-23	An observation data was registered.
2014-03-25	An observation data was registered.
2012-11-02	An observation data was registered.

#### JAMSTEC

[Site Policy](#)  
[Privacy Policy](#)  
[Application for Data and Samples](#)  
[Data Policy](#)  
**What's New**  
[Update History](#)  
[Feeds](#)

#### Lists

[Publication List](#)  
[Amount of Public Info.](#)  
**Data**  
[Map Search](#)  
[Data Tree](#)  
[Detailed Search](#)

#### Information of the Ships

NATSUSHIMA  
KAIYO  
YOKOSUKA  
MIRAI  
KAIKEI  
CHIKYU  
KAIKEI  
SHINSEI MARU  
HAKUHO MARU

#### Information of the Submersibles

KAIKO  
SHINKAI 2000  
SHINKAI 6500  
DEEP TOW  
HYPER-DOLPHIN  
URASHIMA  
YOKOSUKA DEEP TOW  
6K Camera DEEP TOW  
6K Sonar DEEP TOW  
KM-ROV  
POWER GRAB SAMPLER (SHELL)  
POWER GRAB SAMPLER (CLOW)  
BMS

#### Go to a Cruise Information

Cruise ID:

#### Go to a Dive Information

Dive ID:

Copyright 2011 Japan Agency for Marine-Earth Science and Technology



**JAMSTEC**  
JAPAN AGENCY FOR MARINE-EARTH SCIENCE AND TECHNOLOGY

国立研究開発法人  
海洋研究開発機構

## KAIREI KR10-09 Expendable Bathythermograph (XBT)

Last Modified: 2019-09-07

[ReadMe](#) [Observation Data](#) [Data Format](#)

Cruise ID: **KR10-09**

Expendable Bathythermograph (XBT): Processed (DMO)-QCed

Data Policy: **JAMSTEC**

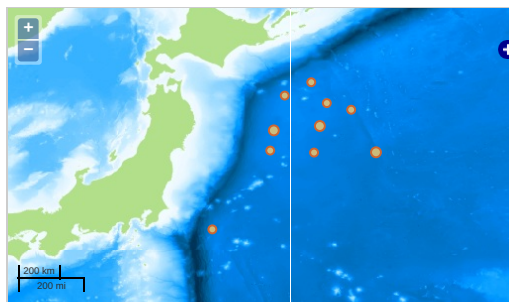
Observation Items: Depth, Temperature

Science Keywords:

OCEANS > OCEAN TEMPERATURE > WATER TEMPERATURE

### Observation Map

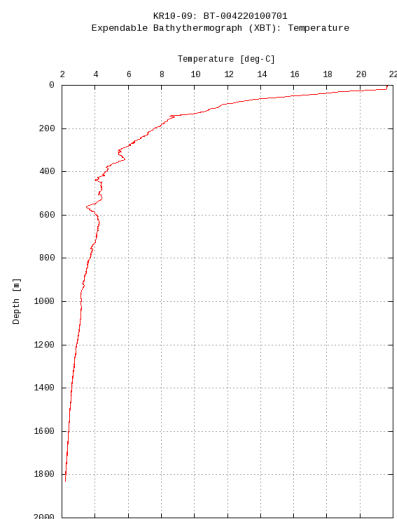
1. Clicking the icon displays a balloon with observation information.
2. Then click the observation name, figures will be displayed.



— ... Observation Line — ... Navigation ● ... Observation, Dive Point, Hole

### Figures

BT-004220100701



Only values evaluated as "good" : all flags are 0" are plotted in profiles.  
Please see Format Page for the definition of quality flags.

### Data List

[Add to Basket](#)

#### File names

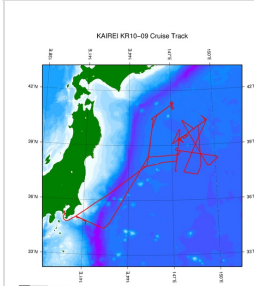
- ☐ BT-004220100701.dat
- ☐ BT-004320100702.dat
- ☐ BT-004520100703.dat
- ☐ BT-004620100703.dat
- ☐ BT-004720100704.dat
- ☐ BT-004820100708.dat
- ☐ BT-004920100709.dat
- ☐ BT-005020100711.dat
- ☐ BT-005120100718.dat
- ☐ BT-005220100719.dat
- ☐ BT-005320100720.dat
- ☐ BT-005620100721.dat
- ☐ BT-005920100724.dat
- ☐ ex\_read2.f (Sample Program)

- Observation List  
The list of observation is shown as follows.

Observation	Time and Date	Lat. [°]	Lon. [°]
BT-004220100701	2010-07-01 23:52	38.2308	145.3258
BT-004320100702	2010-07-02 19:16	39.1266	145.4858

Observation	Time and Date	Lat. (°N)	Lon. (°E)
BT-004520100703	2010-07-03 18:53	39.9218	145.6925
BT-004620100703	2010-07-03 22:29	40.6719	145.9695
BT-004720100704	2010-07-04 23:10	41.2645	147.1480
BT-004820100708	2010-07-08 12:34	38.1418	147.2718
BT-004920100709	2010-07-09 18:52	39.3210	147.5301
BT-005020100711	2010-07-11 18:59	40.0424	148.9205
BT-005120100718	2010-07-18 05:06	38.8425	147.4233
BT-005220100719	2010-07-19 18:49	38.1545	150.0211
BT-005320100720	2010-07-20 03:32	37.8588	149.4736
BT-005620100721	2010-07-21 14:59	40.3375	147.8385
BT-005920100724	2010-07-24 20:23	34.7323	142.7576

#### Related Information



[Enlarge Image](#)

#### KR10-09

Ship Name: KAIREI  
Period: 2010-07-01 - 2010-07-28  
Chief Scientist: Gou Fujie (JAMSTEC)  
Project Name: [Seismic study]

#### Update History

2019-09-07	An observation data was registered.
2017-06-29	An observation data was registered.
2014-09-23	An observation data was registered.
2014-03-25	An observation data was registered.
2012-11-02	An observation data was registered.

#### JAMSTEC

Site Policy  
Privacy Policy  
Application for Data and Samples  
Data Policy  
  
What's New  
Update History  
Feeds

#### Lists

Publication List  
Amount of Public Info.  
  
Data  
Map Search  
Data Tree  
Detailed Search

#### Information of the Ships

NATSUSHIMA  
KAIYO  
YOKOSUKA  
MIRAI  
KAIREI  
CHIKYU  
KAIMEI  
SHINSEI MARU  
HAKUHO MARU

#### Information of the Submersibles

KAIKO  
SHINKAI 2000  
SHINKAI 6500  
DEEP TOW  
HYPER-DOLPHIN  
URASHIMA  
YOKOSUKA DEEP TOW  
6K Camera DEEP TOW  
6K Sonar DEEP TOW  
KM-ROV  
POWER GRAB SAMPLER (SHELL)  
POWER GRAB SAMPLER (CLOW)  
BMS

#### Go to a Cruise Information

Cruise ID:

#### Go to a Dive Information

Dive ID:

Copyright 2011 Japan Agency for Marine-Earth Science and Technology



**JAMSTEC** 国立研究開発法人  
海洋研究開発機構  
JAPAN AGENCY FOR MARINE-EARTH SCIENCE AND TECHNOLOGY