

MIRAI MR03-K04 Leg5 Cloud Ceiling

Last Modified: 2014-07-24

ReadMe Observation Data Data Format

Cruise ID: [MR03-K04 Leg5](#)

Cloud Ceiling: Raw

Data Policy: [JAMSTEC](#)

Observation Items: Cloud base height

Science Keywords:

ATMOSPHERE > CLOUDS > CLOUD
BASE

Cruise Report

http://www.godac.jamstec.go.jp/catalog/data/doc_catalog/media/MR03-K04_leg5_all.pdf

For Using Data

Principal Investigator

Data Management Office

Use Constraints

See [Terms and Conditions](#) about constrain of use.

Data Citation

See [Terms and Conditions](#) about data citation.

Instrument

Instrument:

Ceilometer (- MR12-05Leg3)



Overview

Ceilometer is the system that measures cloud base height by laser pulse emitted vertically.

Up to three levels of cloud base can be detected by measuring the change of strength of backscatter signal.

And the cloud base height is calculated from the elapsed time from laser pulse emission to backscatter detection.

In case the cloud base is obscured, it measures the vertical visibility.

System

Manufacturer: Vaisala Inc.
Type: CT25K Ver2.01
Serial number: T18102
Measurement range: up to 7500m
Resolution: 15m
Sampling rate: 15-120 seconds available (60sec as default)
Accuracy: $\pm 2\%$ or $\pm 1/2 \times$ Resolution
Location: Compass deck bow side (18 meters high from sea surface)
Recording software: CT-VIEW Ver1.05 (before MR01-K04)
CT-VIEW Ver2.10 (MR01-K05 or later)

Note

(1) File naming rule for CYMMDDHH.DAT(Ver1.05) and AYMMDDHH.DAT(Ver2.10).

C or A : Fixed as 'C' or 'A'
Y : Year in 1 digit
MM : Recording start month (UTC)
DD : Recording start day (UTC)
HH : Recording start time (UTC)

(2) Adjustment for the height : No sea surface level adjustment is applied to the raw data.

(3) Invalid data information : Ceilometer data files include the invalid data in this cruise as follows.

Date/Time : Date,Time data is invalid
Format : Format error data
DataLack : Lack of data

Start	Stop	File name	Date,Time	Remarks
A3121800.DAT20031218,181454				Format
A3122000.DAT20031220,072054-A3122013.DAT20031220,133952	DataLack			
A3122100.DAT20031221,170252-A3122100.DAT20031221,170452	DataLack			
A4010500.DAT20040105,181258				Format
A4010800.DAT20040108,065656-A4010807.DAT20040108,074356	DataLack			
A4011300.DAT20040113,130658				Format
A4011500.DAT20040115,002600-A4011500.DAT20040115,002759	DataLack			
A4011800.DAT20040118,152759				Format
A4012300.DAT20040123,051601				Format

Related Information

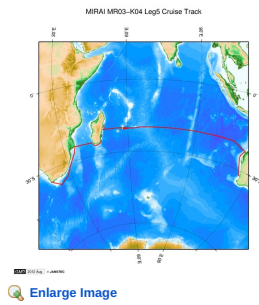
MR03-K04 Leg5

Ship Name: MIRAI

Period: 2003-12-09 - 2004-01-24

Chief Scientist: Masao Fukasawa (JAMSTEC)

Project Name: [Blue Earth Global Expedition 2003,POST-WOCE Hydrography]



Update History

2014-07-24	An observation data was registerd.
2012-12-25	An observation data was registerd.

JAMSTEC

Site Policy
Privacy Policy
Application for Data and Samples
Data Policy

What's New
Update History
Feeds

Lists

Publication List
Amount of Public Info.

Data

Map Search
Data Tree
Detailed Search

Information of the Ships

NATSUSHIMA
KAIYO
YOKOSUKA
MIRAI
KAIREI
CHIKYU
KAIMEI
SHINSEI MARU
HAKUHO MARU

Information of the Submersibles

KAIKO
SHINKAI 2000
SHINKAI 6500
DEEP TOW
HYPER-DOLPHIN
URASHIMA
YOKOSUKA DEEP TOW
6K Camera DEEP TOW
6K Sonar DEEP TOW
KM-ROV
POWER GRAB
SAMPLER (SHELL)
POWER GRAB
SAMPLER (CLOW)
BMS

Go to a Cruise Information

Cruise ID:

Go to a Dive Information

Dive ID:

Copyright 2011 Japan Agency for Marine-Earth Science and Technology



JAMSTEC 国立研究開発法人
海洋研究開発機構
JAPAN AGENCY FOR MARINE-EARTH SCIENCE AND TECHNOLOGY

MIRAI MR03-K04 Leg5 Cloud Ceiling

Last Modified: 2014-07-24

[ReadMe](#) [Observation Data](#) [Data Format](#)

Cruise ID: [MR03-K04 Leg5](#)

Cloud Ceiling: Raw

Data Policy: [JAMSTEC](#)

Ceiling Raw

The record length of the data file is 56 bytes.

No.	Column	Content	Format	Remarks
1	1 - 8	Date	i4,i2,i2	YYYYMMDD (UTC)
2	10 - 15	Time	i2,i2,i2	hhmmss (UTC)
3	17 - 19	Operating software	a3	'CT0' : CT-VIEW 'CL0' : CL-VIEW
4	20 - 21	Software version	i2	Version of operating software
5	22	Data status	i1	1: Cloud base height/vertical visibility data 2: Cloud base height/vertical visibility, backscatter signal 6: Cloud base height/vertical visibility, cloud amount/height of cloud layer 7: Cloud base height/vertical visibility, backscatter signal, cloud amount/height of cloud layer
6	23	Spare character	a1	
7	25	Detection status	i1	0: Clear 1: One cloud base detected 2: Two cloud bases detected 3: Three cloud bases detected 4: Full obscuration determined but no cloud base detected 5: Some obscuration detected but determined to transparent
8	26	Warning and alarm information	a1	0: Self-check OK W: At least one warning active, no alarms A: At least one alarm active See No.12:observation information
9	28 - 32	Lowest cloud base height or vertical visibility	i5	In the case of detection status is 1,2 or 3: Lowest cloud base height In the case of detection status is 4: Calculation of vertical visibility In the case of detection status is 0 or 5: ///// Unit: See No.12:observation information
10	34 - 38	Second lowest cloud base height or highest signal detected	i5	In the case of detection status is 2 or 3: Second lowest cloud base height In the case of detection status is 4: Maximum height that a signal was detected In the case of detection status is 0,1 or 5: ///// Unit: See No.12:observation information
11	40 - 44	Highest cloud base height	i5	In the case of detection status is 3: Highest cloud base height In the case of detection status is 0,1,2,4,5: ///// Unit: See No.12:observation information
12	46 - 53	Observation information	a8	*1
13	55 - 56	Terminator	a2	CR+LF

*1: Observation information

The information is presented using 8 bytes characters. Each character, indicated in hexadecimal character, shows the following meanings;

Byte	Hexadecimal character (0:on, -:off)																Message(A:alarm, W:warning)
	0	1	2	3	4	5	6	7	8	9	A	B	C	D	E	F	
1	-	-	-	-	-	-	-	0	0	0	0	0	0	0	0	0	Laser temperature shut-off(A)
	-	-	-	0	0	0	0	-	-	-	0	0	0	0	0	0	Laser failure(A)
	-	0	0	-	0	0	0	-	0	0	-	0	0	-	0	0	Receiver failure(A)
	0	-	0	-	0	-	0	-	0	-	0	-	0	-	0	0	Voltage failure(A)
2	-	-	-	-	-	-	-	0	0	0	0	0	0	0	0	0	Spare(A)
	-	-	-	0	0	0	0	-	-	0	0	0	0	0	0	0	Spare(A)
	-	0	0	-	0	0	0	-	0	0	-	0	0	-	0	0	Spare(A)
	0	-	0	-	0	-	0	-	0	-	0	-	0	-	0	0	Spare(A)
3	-	-	-	-	-	-	-	0	0	0	0	0	0	0	0	0	Windows contaminated(W)
	-	-	-	0	0	0	0	-	-	-	0	0	0	0	0	0	Battery low(W)
	-	0	0	-	0	0	0	-	0	0	-	0	0	-	0	0	Laser power low(W)
	0	-	0	-	0	-	0	-	0	-	0	-	0	-	0	0	Laser temperature high or low(W)
4	-	-	-	-	-	-	-	0	0	0	0	0	0	0	0	0	Internal temperature high or low(W)
	-	-	-	0	0	0	0	-	-	-	0	0	0	0	0	0	Voltage high or low(W)
	-	0	0	-	0	0	0	-	0	0	-	0	0	-	0	0	Relative Humidity is > 85%(W)
	0	-	0	-	0	-	0	-	0	-	0	-	0	-	0	0	Receiver cross-talk compensation poor(W)
5	-	-	-	-	-	-	-	0	0	0	0	0	0	0	0	0	Blower suspect(W)
	-	-	-	0	0	0	0	-	-	0	0	0	0	0	0	0	Spare(W)
	-	0	0	-	0	0	0	-	0	0	-	0	0	-	0	0	Spare(W)
	0	-	0	-	0	-	0	-	0	-	0	-	0	-	0	0	Spare(W)
6	-	-	-	-	-	-	-	0	0	0	0	0	0	0	0	0	Blower is ON
	-	-	-	0	0	0	0	-	-	-	0	0	0	0	0	0	Blower heater is ON
	-	0	0	-	0	0	0	-	0	0	-	0	0	-	0	0	Internal heater is ON
	0	-	0	-	0	-	0	-	0	-	0	-	0	-	0	0	Units are METERS if ON , else FEET
7	-	-	-	-	-	-	-	0	0	0	0	0	0	0	0	0	Polling mode is ON
	-	-	-	0	0	0	0	-	-	0	0	0	0	0	0	0	Working from battery
	-	0	0	-	0	0	0	-	0	0	-	0	0	-	0	0	Single sequence mode is ON
	0	-	0	-	0	-	0	-	0	-	0	-	0	-	0	0	Manual settings are effective
8	-	-	-	-	-	-	-	0	0	0	0	0	0	0	0	0	Tilt angle is > 45 degrees
	-	-	-	0	0	0	0	-	-	-	0	0	0	0	0	0	High background radiance
	-	0	0	-	0	0	0	-	0	0	-	0	0	-	0	0	Manual blower control
	0	-	0	-	0	-	0	-	0	-	0	-	0	-	0	0	Spare

Related Information

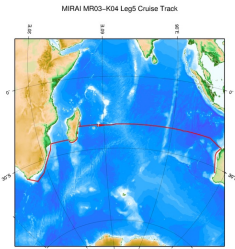
MR03-K04 Leg5

Ship Name: MIRAI

Period: 2003-12-09 - 2004-01-24

Chief Scientist: Masao Fukasawa (JAMSTEC)

Project Name: [Blue Earth Global Expedition 2003,POST-WOCE Hydrography]



[Enlarge Image](#)

Update History

2014-07-24	An observation data was registerd.
2012-12-25	An observation data was registerd.

JAMSTEC

[Site Policy](#)
[Privacy Policy](#)
[Application for Data and Samples](#)
[Data Policy](#)

[What's New](#)
[Update History](#)
[Feeds](#)

Lists

[Publication List](#)
[Amount of Public Info.](#)

Data

[Map Search](#)
[Data Tree](#)
[Detailed Search](#)

Information of the Ships

[NATSUSHIMA](#)
[KAIYO](#)
[YOKOSUKA](#)
[MIRAI](#)
[KAIREI](#)
[CHIKYU](#)
[KAIMEI](#)
[SHINSEI MARU](#)
[HAKUHO MARU](#)

Information of the Submersibles

[KAIKO](#)
[SHINKAI 2000](#)
[SHINKAI 6500](#)
[DEEP TOW](#)
[HYPER-DOLPHIN](#)
[URASHIMA](#)
[YOKOSUKA DEEP TOW](#)
[6K Camera DEEP TOW](#)
[6K Sonar DEEP TOW](#)
[KM-ROV](#)
[POWER GRAB](#)
[SAMPLER \(SHELL\)](#)
[POWER GRAB](#)
[SAMPLER \(CLOW\)](#)
[BMS](#)

Go to a Cruise Information

Cruise ID:

Go to a Dive Information

Dive ID:

Copyright 2011 Japan Agency for Marine-Earth Science and Technology



JAMSTEC
JAPAN AGENCY FOR MARINE-EARTH SCIENCE AND TECHNOLOGY

国立研究開発法人
海洋研究開発機構

MIRAI MR03-K04 Leg5 Cloud Ceiling

Last Modified: 2014-07-24

[ReadMe](#) [Observation Data](#) [Data Format](#)

Cruise ID: [MR03-K04 Leg5](#)

Cloud Ceiling: Raw

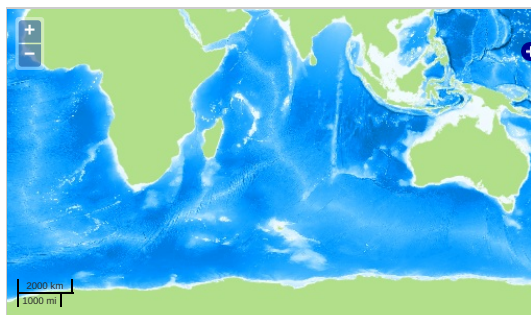
Data Policy: [JAMSTEC](#)

Observation Items: Cloud base height

Science Keywords:

ATMOSPHERE > CLOUDS > CLOUD
BASE

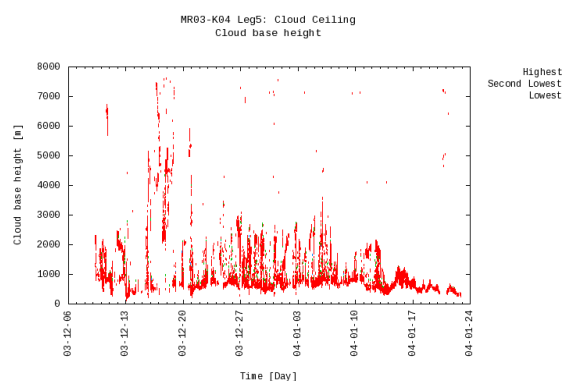
Observation Map



— ... Observation Line — ... Navigation ● ... Observation, Dive Point, Hole

Imagery reproduced from ...

Figures



Data List

[Add to Basket](#)

☐ File names

☐ A3120900.DAT

☐ A3121000.DAT

☐ A3121100.DAT

☐ A3121200.DAT

☐ A3121300.DAT

☐ A3121400.DAT

☐ A3121500.DAT

☐ A3121600.DAT

☐ A3121700.DAT

☐ A3121800.DAT

☐ A3121900.DAT

☐ A3122000.DAT

☐ A3122013.DAT

☐ A3122100.DAT

☐ A3122200.DAT

☐ A3122300.DAT

☐ A3122400.DAT

☐ A3122500.DAT

☐ A3122600.DAT

☐ A3122700.DAT

☐ A3122800.DAT

☐ A3122900.DAT

☐ A3123000.DAT

☐ A3123100.DAT

☐ A4010100.DAT

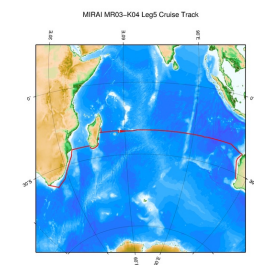
☐ A4010200.DAT

☐ A4010300.DAT

☐ A4010400.DAT

File names
<input type="checkbox"/> A4010500.DAT
<input type="checkbox"/> A4010600.DAT
<input type="checkbox"/> A4010700.DAT
<input type="checkbox"/> A4010800.DAT
<input type="checkbox"/> A4010807.DAT
<input type="checkbox"/> A4010900.DAT
<input type="checkbox"/> A4011000.DAT
<input type="checkbox"/> A4011100.DAT
<input type="checkbox"/> A4011200.DAT
<input type="checkbox"/> A4011300.DAT
<input type="checkbox"/> A4011400.DAT
<input type="checkbox"/> A4011500.DAT
<input type="checkbox"/> A4011600.DAT
<input type="checkbox"/> A4011700.DAT
<input type="checkbox"/> A4011800.DAT
<input type="checkbox"/> A4011900.DAT
<input type="checkbox"/> A4012000.DAT
<input type="checkbox"/> A4012100.DAT
<input type="checkbox"/> A4012200.DAT
<input type="checkbox"/> A4012300.DAT
<input type="checkbox"/> A4012400.DAT

Related Information



[Enlarge Image](#)

MR03-K04 Leg5

Ship Name: MIRAI
 Period: 2003-12-09 - 2004-01-24
 Chief Scientist: Masao Fukasawa (JAMSTEC)
 Project Name: [Blue Earth Global Expedition 2003, POST-WOCE Hydrography]

Update History

2014-07-24	An observation data was registered.
2012-12-25	An observation data was registered.

JAMSTEC

[Site Policy](#)
[Privacy Policy](#)
[Application for Data and Samples](#)
[Data Policy](#)

[What's New](#)
[Update History](#)
[Feeds](#)

Lists

[Publication List](#)
[Amount of Public Info.](#)

Data

[Map Search](#)
[Data Tree](#)
[Detailed Search](#)

Information of the Ships

[NATSUSHIMA](#)
[KAIYO](#)
[YOKOSUKA](#)
[MIRAI](#)
[KAIREI](#)
[CHIKYU](#)
[KAIMEI](#)
[SHINSEI MARU](#)
[HAKUHO MARU](#)

Information of the Submersibles

[KAIKO](#)
[SHINKAI 2000](#)
[SHINKAI 6500](#)
[DEEP TOW](#)
[HYPER-DOLPHIN](#)
[URASHIMA](#)
[YOKOSUKA DEEP TOW](#)
[6K Camera DEEP TOW](#)
[6K Sonar DEEP TOW](#)
[KM-ROV](#)
[POWER GRAB SAMPLER \(SHELL\)](#)
[POWER GRAB SAMPLER \(CLOW\)](#)
[BMS](#)

Go to a Cruise Information

Cruise ID:

Go to a Dive Information

Dive ID:

Copyright 2011 Japan Agency for Marine-Earth Science and Technology



JAMSTEC 国立研究開発法人
 海洋研究開発機構
 JAPAN AGENCY FOR MARINE-EARTH SCIENCE AND TECHNOLOGY