

## MIRAI MR12-05 Leg1 Shipboard Acoustic Doppler Current Profiler (ADCP)

Last Modified: 2017-04-11

[ReadMe](#) [Observation Data](#) [Data Format](#)

Cruise ID: [MR12-05 Leg1](#)

Shipboard Acoustic Doppler Current Profiler (ADCP): Processed (PI)

Data Policy: [JAMSTEC](#)

Observation Items: Depth, Absolute velocity (zonal, meridional and vertical)

Science Keywords:

OCEANS > OCEAN CIRCULATION > OCEAN CURRENTS

Cruise Report

[http://www.godac.jamstec.go.jp/catalog/data/doc\\_catalog/media/MR12-05\\_leg1-3\\_all.pdf](http://www.godac.jamstec.go.jp/catalog/data/doc_catalog/media/MR12-05_leg1-3_all.pdf)

### For Using Data

Principal Investigator

Shinya Kouketsu (JAMSTEC)

Use Constraints

See [Terms and Conditions](#) about constrain of use.

Data Citation

See [Terms and Conditions](#) about data citation.

Period (UTC)

2012-11-05 04:15 – 2012-11-16 15:00

2012-11-17 03:01 – 2012-11-25 07:00

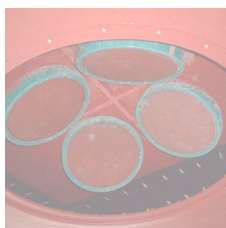
Instrument

Instrument:

Shipboard acoustic doppler current profiler (ADCP) (MR08-02 -)

Instrument:

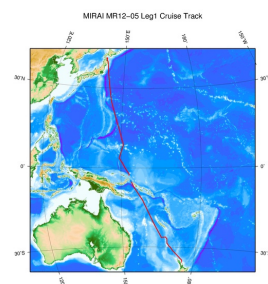
Shipboard acoustic doppler current profiler (ADCP) (- MR08-E01)



Overview

Please see the [Data book](#) for details of data.

### Related Information



[Enlarge Image](#)

#### MR12-05 Leg1

Ship Name: MIRAI

Period: 2012-11-05 - 2012-11-25

Chief Scientist: Katsuro Katsumata (JAMSTEC)

Proposal ▶ WOCE-revisit in the western Pacific and Southern oceans

Title:

### Update History

2017-04-11	An observation data was registerd.
2015-05-31	An observation data was registerd.
2014-08-12	An observation data was registerd.
2014-06-14	An observation data was registerd.
2014-05-28	An observation data was registerd.
2013-08-08	An observation data was registerd.

#### JAMSTEC

Site Policy

Privacy Policy

Application for Data and Samples

Data Policy

What's New

Update History

Feeds

#### Lists

Publication List

Amount of Public Info.

Data

Map Search

Data Tree

Detailed Search

#### Information of the Ships

NATSUSHIMA

KAIYO

YOKOSUKA

MIRAI

KAIREI

CHIKYU

KAIMEI

SHINSEI MARU

HAKUHO MARU

#### Information of the Submersibles

KAIKO

SHINKAI 2000

SHINKAI 6500

DEEP TOW

HYPER-DOLPHIN

URASHIMA

YOKOSUKA DEEP TOW

6K Camera DEEP TOW

6K Sonar DEEP TOW

KM-ROV

POWER GRAB SAMPLER

(SHELL)

#### Go to a Cruise Information

Cruise ID:

#### Go to a Dive Information

Dive ID:

POWER GRAB SAMPLER  
(CLOW)  
BMS

Copyright 2011 Japan Agency for Marine-Earth Science and  
Technology



**JAMSTEC** 国立研究開発法人  
海洋研究開発機構  
JAPAN AGENCY FOR MARINE-EARTH SCIENCE AND TECHNOLOGY

## MIRAI MR12-05 Leg1 Shipboard Acoustic Doppler Current Profiler (ADCP)

Last Modified: 2017-04-11

[ReadMe](#) [Observation Data](#) [Data Format](#)

Cruise ID: [MR12-05 Leg1](#)

Shipboard Acoustic Doppler Current Profiler (ADCP) Processed (PI)

Data Policy: [JAMSTEC](#)

Velocity data with ADCP

Files:

formatted.txt Velocity profile (10 min. average)

File Format:

Year/Month/Day Hour/Minutes Time\_Zone Degree\_Longitude Minites\_Longitude Degree\_Latitude Minites\_Latitude

Depth(m) U(m/s) V(m/s) Error(m/s)

```

. . . . .
. . . . .
. . . . .
. . . . .
. . . . .
. . . . .

```

Cruise\_Code : cruise code

Section\_Code: section code

Station\_Code: station code

Cast\_Code: cast code

Year/Month/Day Hour/Minutes Time\_Zone: The mean time for the ensemble

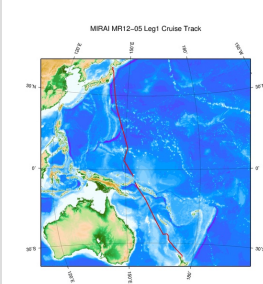
Degree\_Latitude Minites\_Latitude [N/S]: The mean latitude

Degree\_Longitude Minites\_Longitude [E/W]: The mean longitude

Contact:

Shinya Kouketsu (skouketsu@jamstec.go.jp)

### Related Information



[Enlarge Image](#)

#### MR12-05 Leg1

Ship Name: MIRAI

Period: 2012-11-05 - 2012-11-25

Chief Scientist: Katsuro Katsumata (JAMSTEC)

Proposal ▶ WOCE-revisit in the western Pacific and Southern oceans

Title:

### Update History

2017-04-11	An observation data was registerd.
2015-05-31	An observation data was registerd.
2014-08-12	An observation data was registerd.
2014-06-14	An observation data was registerd.
2014-05-28	An observation data was registerd.
2013-08-08	An observation data was registerd.

#### JAMSTEC

[Site Policy](#)  
[Privacy Policy](#)  
[Application for Data and Samples](#)  
[Data Policy](#)

[What's New](#)  
[Update History](#)  
[Feeds](#)

#### Lists

[Publication List](#)  
[Amount of Public Info.](#)

#### Data

[Map Search](#)  
[Data Tree](#)  
[Detailed Search](#)

#### Information of the Ships

[NATSUSHIMA](#)  
[KAIYO](#)  
[YOKOSUKA](#)  
[MIRAI](#)  
[KAIREI](#)  
[CHIKYU](#)  
[KAIMEI](#)  
[SHINSEI MARU](#)  
[HAKUHO MARU](#)

#### Information of the Submersibles

[KAIKO](#)  
[SHINKAI 2000](#)  
[SHINKAI 6500](#)  
[DEEP TOW](#)  
[HYPER-DOLPHIN](#)  
[URASHIMA](#)  
[YOKOSUKA DEEP TOW](#)  
[6K Camera DEEP TOW](#)  
[6K Sonar DEEP TOW](#)  
[KM-ROV](#)  
[POWER GRAB](#)  
[SAMPLER \(SHELL\)](#)  
[POWER GRAB](#)  
[SAMPLER \(CLOW\)](#)  
[BMS](#)

#### Go to a Cruise Information

Cruise ID:

#### Go to a Dive Information

Dive ID:

## MIRAI MR12-05 Leg1 Shipboard Acoustic Doppler Current Profiler (ADCP)

Last Modified: 2017-04-11

[ReadMe](#) [Observation Data](#) [Data Format](#)

Cruise ID: [MR12-05 Leg1](#)

Shipboard Acoustic Doppler Current Profiler (ADCP): Processed (PI)

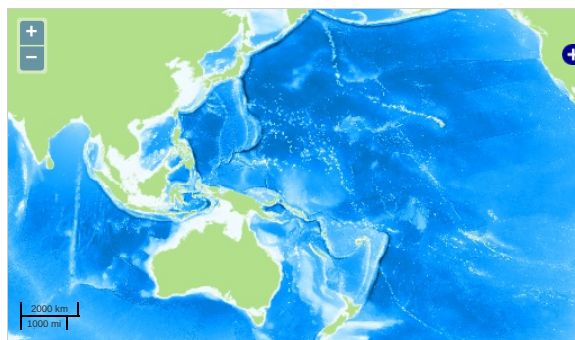
Data Policy: [JAMSTEC](#)

Observation Items: Depth, Absolute velocity (zonal, meridional and vertical)

Science Keywords:

OCEANS > OCEAN CIRCULATION > OCEAN CURRENTS

### Observation Map



... Observation Line ... Navigation ... Observation, Dive Point, Hole

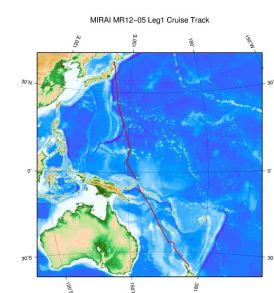
Imagery reproduced from ...

### Data List

File names

☐ formatted.txt

### Related Information



[Enlarge Image](#)

#### MR12-05 Leg1

Ship Name: MIRAI

Period: 2012-11-05 - 2012-11-25

Chief Scientist: Katsuro Katsumata (JAMSTEC)

Proposal ▶ WOCE-revisit in the western Pacific and Southern oceans

Title:

### Update History

2017-04-11	An observation data was registered.
2015-05-31	An observation data was registered.
2014-08-12	An observation data was registered.
2014-06-14	An observation data was registered.
2014-05-28	An observation data was registered.
2013-08-08	An observation data was registered.

#### JAMSTEC

[Site Policy](#)  
[Privacy Policy](#)  
[Application for Data and Samples](#)  
[Data Policy](#)  
  
[What's New](#)  
[Update History](#)  
[Feeds](#)

#### Lists

[Publication List](#)  
[Amount of Public Info.](#)  
  
[Data](#)  
[Map Search](#)  
[Data Tree](#)  
[Detailed Search](#)

#### Information of the Ships

[NATSUSHIMA](#)  
[KAIYO](#)  
[YOKOSUKA](#)  
[MIRAI](#)  
[KAIREI](#)  
[CHIKYU](#)  
[KAIMEI](#)  
[SHINSEI MARU](#)  
[HAKUHO MARU](#)

#### Information of the Submersibles

[KAIKO](#)  
[SHINKAI 2000](#)  
[SHINKAI 6500](#)  
[DEEP TOW](#)  
[HYPER-DOLPHIN](#)  
[URASHIMA](#)  
[YOKOSUKA DEEP TOW](#)  
[6K Camera DEEP TOW](#)  
[6K Sonar DEEP TOW](#)  
[KM-ROV](#)  
[POWER GRAB SAMPLER \(SHELL\)](#)  
[POWER GRAB SAMPLER \(CLOW\)](#)  
[BMS](#)

#### Go to a Cruise Information

Cruise ID:

#### Go to a Dive Information

Dive ID: