

## MIRAI MR01-K05 Leg1 Underway Thermosalinograph

Last Modified: 2017-06-29

[ReadMe](#) [Observation Data](#) [Data Format](#)

Cruise ID: [MR01-K05 Leg1](#)

Underway Thermosalinograph: Processed (DMO)-QCed

Data Policy: [JAMSTEC](#)

Observation Items: Temperature, Salinity, Dissolved oxygen

Science Keywords:

OCEANS > OCEAN CHEMISTRY > OXYGEN  
OCEANS > SALINITY/DENSITY > SALINITY  
OCEANS > OCEAN > SEA SURFACE TEMPERATURE  
OCEANS TEMPERATURE TEMPERATURE

Cruise Report

[http://www.godac.jamstec.go.jp/catalog/data/doc\\_catalog/media/MR01-K05\\_leg1\\_all.pdf](http://www.godac.jamstec.go.jp/catalog/data/doc_catalog/media/MR01-K05_leg1_all.pdf)

### [For Using Data](#)

Principal Investigator

Data Management Office

JAMSTEC / BPPT joint cruise in the Indonesian waters.

Use Constraints

See [Terms and Conditions](#) about constrain of use.

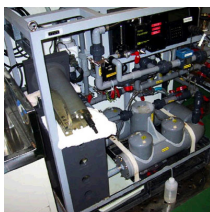
Data Citation

See [Terms and Conditions](#) about data citation.

### Instrument

Instrument:

Continuous sea surface water monitoring system ( - MR10-03 Leg2)



### Overview

Thermosalinograph measures the following surface parameters continuously.

- temperature
- salinity
- dissolved oxygen

Sea surface water is continuously pumped up at 4.5 meters depth to the sea surface monitoring laboratory and then flowed into each analysis equipment through a steel pipe and a vinyl-chloride pipe.

The flow rate of this system is controlled by some valves. Data are recorded in the personal computer.

### System

- Temperature sensor
  - Model : SBE 3S, Sea-Bird Electronics, Inc.
  - Serial number : 2175
  - Measurement range : -5 to 35 deg-C (ITS-90)
  - Sensor location : Bow thruster room
- Salinity sensor
  - SEACAT THERMOSALINOGRAPH
  - Model : SBE-21, Sea-Bird Electronics, Inc.
  - Serial number : 3126
  - Measurement range : [temperature] -5 to +35 deg-C (ITS-90), [conductivity] 0 to 6.5 S/m
  - Sensor location : Sea surface monitoring laboratory
- DO sensor
  - Model : 2127A, Orbisphere Laboratories Japan Inc.
  - Serial number : 31757
  - Measurement range : 0 to 14 ppm
  - Sensor location : Sea surface monitoring laboratory

### Data acquisition

Date/Time (UTC)	Start/Stop	Remarks
2001/09/22, 23:32	start	30-36.04N, 140-57.50E
2001/09/23, 10:18	stop	28-01.02N, 140-28.48E
2001/09/23, 10:34	start	27-57.07N, 140-27.38E
2001/09/26, 01:23	stop	15-35.98N, 138-11.91E
2001/09/26, 01:46	start	15-36.10N, 138-11.83E
2001/09/30, 07:04	stop	01-59.36N, 138-06.83E
2001/09/30, 07:37	start	01-58.78N, 138-05.80E
2001/10/09, 06:46	stop	06-59.57N, 126-42.96E
2001/10/09, 10:58	start	08-00.14N, 126-43.19E
2001/10/09, 18:55	stop	09-59.66N, 126-43.18E

### Calibration Information

Calibration Information is as follows.

#### Calibration Information

#### Data processing

##### (1) Quality control

QCed data were added flag according to the NODC (National Oceanographic Data Center) quality control procedure.

1) The gradient check of adjacent depth data

Please see the site of NODC of the following link for quality control procedure in detail.

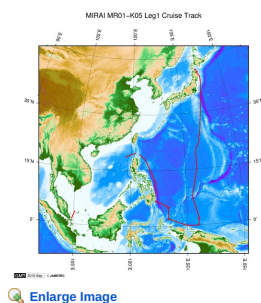
#### QUALITY CONTROL AND PROCESSING OF HISTORICAL OCEANOGRAPHIC TEMPERATURE, SALINITY, AND OXYGEN DATA

In addition, an abnormal value is identified by a visual check, and the data after visual QC is released.

#### Note

(1) In this cruise, there is extra data (fluorescence intensity, particle size of plankton) in addition to temperature, salinity, dissolved oxygen that has been opened to the public. Please contact us from "Contact Us" above if necessary.

#### Related Information



[Enlarge Image](#)

#### MR01-K05 Leg1

Ship Name: MIRAI

Period: 2001-09-20 - 2001-10-16

Chief Scientist: Yoshifumi Kuroda (JAMSTEC)

Project Name: [Tropical Ocean Climate Study (TOCS)]

#### Update History

2017-06-29	An observation data was registered.
2016-10-11	An observation data was registered.

#### JAMSTEC

[Site Policy](#)

[Privacy Policy](#)

[Application for Data and Samples](#)

[Data Policy](#)

[What's New](#)

[Update History](#)

[Feeds](#)

#### Lists

[Publication List](#)

[Amount of Public Info.](#)

#### Data

[Map Search](#)

[Data Tree](#)

[Detailed Search](#)

#### Information of the Ships

[NATSUSHIMA](#)

[KAIYO](#)

[YOKOSUKA](#)

[MIRAI](#)

[KAIREI](#)

[CHIKYU](#)

[KAI MEI](#)

[SHINSEI MARU](#)

[HAKUHO MARU](#)

#### Information of the Submersibles

[KAIKO](#)

[SHINKAI 2000](#)

[SHINKAI 6500](#)

[DEEP TOW](#)

[HYPER-DOLPHIN](#)

[URASHIMA](#)

[YOKOSUKA DEEP TOW](#)

[6K Camera DEEP TOW](#)

[6K Sonar DEEP TOW](#)

[KM-ROV](#)

[POWER GRAB](#)

[SAMPLER \(SHELL\)](#)

[POWER GRAB](#)

[SAMPLER \(CLOW\)](#)

[BMS](#)

#### Go to a Cruise Information

Cruise ID:

#### Go to a Dive Information

Dive ID:

Copyright 2011 Japan Agency for Marine-Earth Science and Technology



**JAMSTEC**

国立研究開発法人  
海洋研究開発機構  
JAPAN AGENCY FOR MARINE-EARTH SCIENCE AND TECHNOLOGY

## MIRAI MR01-K05 Leg1 Underway Thermosalinograph

Last Modified: 2017-06-29

[ReadMe](#)   [Observation Data](#)   [Data Format](#)

 Cruise ID: [MR01-K05 Leg1](#)

Underway Thermosalinograph: Processed (DMO)-QCed

 Data Policy: [JAMSTEC](#)

### TSG DMO (MR98-K01 - MR10-03)

#### Format Description for the Corrected Data

Please see the site of each cruise.

#### Format Description for the QCed Data (MR98-K01 - MR10-03)

Each data file contains one line header (meta data) followed by data lines for one day.

The number of data lines are recorded in the header.

#### Header part

No.	Column	Content	Format	Remarks
1	1	Header ID	a1	fixed as '#'
2	3 - 6	Data ID	a4	TSG
3	8 - 22	Cruise ID	a15	MYYY-(K)XX(_legx)
4	68 - 71	Number of data lines	i4	
5	72 - 73	Terminator	-	CR+LF

#### Data part

No.	Column	Content	Unit	Format	Remarks
1	1 - 8	Date	-	i8	YYYYMMDD (UTC)
2	10 - 13	Time	-	i4	hhmm (UTC)
3	15 - 23	Latitude	-	i2,a1,f5.2,a1	dd-mm.mmN(S)
4	25 - 34	Longitude	-	i3,a1,f5.2,a1	ddd-mm.mmE(W)
5	35 - 45	Temperature	deg-C	f11.4	ITS-90
6	46 - 56	Salinity	PSU	f11.4	PSS-78
7	57 - 67	Dissolved oxygen	mg/l	f11.4	
8	68 - 78	Flag	-	i11	1 - 6 : space 7 : flag of date/time 8 : flag of latitude/longitude 9 : flag of temperature 10 : flag of salinity 11 : flag of dissolved oxygen * reference : <a href="#">Definition of Quality Control Flags</a>
9	79 - 80	Terminator	-	-	CR+LF

#### Definition of Quality Control Flags

##### 1. Depth Flags

- 0 - accepted value
- 1 - error in recorded depth ( same or less than previous depth )
- 2 - density inversion

##### 2. Observed Level Flags

- N - missing value
- 0 - accepted value
- 1 - range outlier ( outside of broad range check )
- 2 - failed inversion check
- 3 - failed gradient check
- 4 - zero anomaly
- 5 - failed combined gradient and inversion checks
- 6 - failed range and inversion checks
- 7 - failed range and gradient checks
- 8 - failed range and zero anomaly checks
- 9 - failed range and combined gradient and inversion checks
- A - failed visual check

\* The check only about range check for Thermosalinograph data.

##### 3. Date and time flag (Thermosalinograph only)

- 0 - accepted data and time
- 1 - failed duplicate/missing/incorrect date and time

##### 4. Position flag (Thermosalinograph only)

- 0 - accepted position
- 1 - failed estimated ship speed check including missing/incorrect position

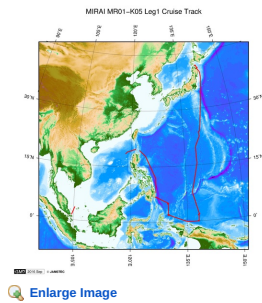
QCed data were added flag according to the NODC (National Oceanographic Data Center) quality control procedure, additionally visually checked. Please see the site of NODC of the following link for quality control procedure.

[QUALITY CONTROL AND PROCESSING OF HISTORICAL OCEANOGRAPHIC TEMPERATURE, SALINITY, AND OXYGEN DATA](#)

#### Sample Program

[ex\\_read.f](#)

#### Related Information



#### MR01-K05 Leg1

Ship Name: MIRAI

Period: 2001-09-20 - 2001-10-16

Chief Scientist: Yoshifumi Kuroda (JAMSTEC)

Project Name: [Tropical Ocean Climate Study (TOCS)]

#### Update History

2017-06-29	An observation data was registerd.
2016-10-11	An observation data was registerd.

#### JAMSTEC

Site Policy  
Privacy Policy  
Application for Data and Samples  
Data Policy

What's New  
Update History  
Feeds

#### Lists

Publication List  
Amount of Public Info.

#### Data

Map Search  
Data Tree  
Detailed Search

#### Information of the Ships

NATSUSHIMA  
KAIYO  
YOKOSUKA  
MIRAI  
KAIREI  
CHIKYU  
KAIMEI  
SHINSEI MARU  
HAKUHO MARU

#### Information of the Submersibles

KAIKO  
SHINKAI 2000  
SHINKAI 6500  
DEEP TOW  
HYPER-DOLPHIN  
URASHIMA  
YOKOSUKA DEEP TOW  
6K Camera DEEP TOW  
6K Sonar DEEP TOW  
KM-ROV  
POWER GRAB  
SAMPLER (SHELL)  
POWER GRAB  
SAMPLER (CLOW)  
BMS

#### Go to a Cruise Information

Cruise ID:

#### Go to a Dive Information

Dive ID:

Copyright 2011 Japan Agency for Marine-Earth Science and Technology



**JAMSTEC**  
JAPAN AGENCY FOR MARINE-EARTH SCIENCE AND TECHNOLOGY

国立研究開発法人  
海洋研究開発機構

## MIRAI MR01-K05 Leg1 Underway Thermosalinograph

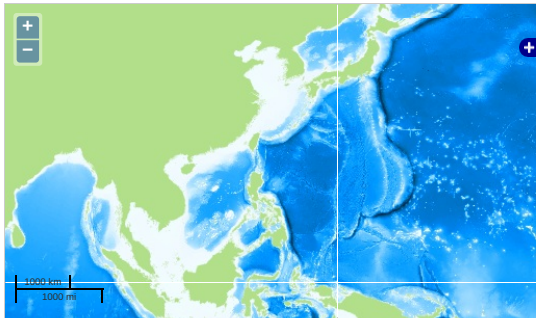
Last Modified: 2017-06-29

[ReadMe](#) [Observation Data](#) [Data Format](#)

Cruise ID: [MR01-K05 Leg1](#)  
Underway Thermosalinograph: Processed (DMO)-QCed  
Data Policy: [JAMSTEC](#)  
Observation Items: Temperature, Salinity, Dissolved oxygen

Science Keywords:  
OCEANS > OCEAN CHEMISTRY > OXYGEN  
OCEANS > SALINITY/DENSITY > SALINITY  
OCEANS > OCEAN > SEA SURFACE  
OCEANS TEMPERATURE TEMPERATURE

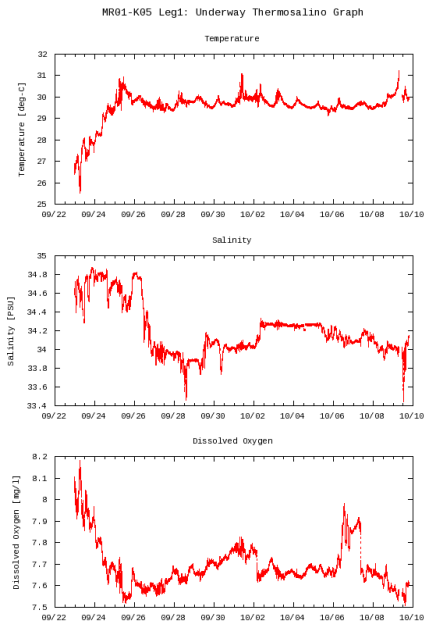
Observation Map



... Observation Line ... Navigation ... Observation, Dive Point, Hole

Imagery reproduced from ...

Figures

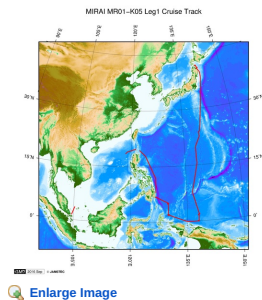


Data List

Add to Basket

<input type="checkbox"/>	File names
<input type="checkbox"/>	20010922.dat
<input type="checkbox"/>	20010923.dat
<input type="checkbox"/>	20010924.dat
<input type="checkbox"/>	20010925.dat
<input type="checkbox"/>	20010926.dat
<input type="checkbox"/>	20010927.dat
<input type="checkbox"/>	20010928.dat
<input type="checkbox"/>	20010929.dat
<input type="checkbox"/>	20010930.dat
<input type="checkbox"/>	20011001.dat
<input type="checkbox"/>	20011002.dat
<input type="checkbox"/>	20011003.dat
<input type="checkbox"/>	20011004.dat
<input type="checkbox"/>	20011005.dat
<input type="checkbox"/>	20011006.dat
<input type="checkbox"/>	20011007.dat
<input type="checkbox"/>	20011008.dat
<input type="checkbox"/>	20011009.dat
<input type="checkbox"/>	ex_read.f (Sample Program)

Related Information



#### MR01-K05 Leg1

Ship Name: MIRAI

Period: 2001-09-20 - 2001-10-16

Chief Scientist: Yoshifumi Kuroda (JAMSTEC)

Project Name: [Tropical Ocean Climate Study (TOCS)]

#### Update History

2017-06-29	An observation data was registerd.
2016-10-11	An observation data was registerd.

#### JAMSTEC

Site Policy

Privacy Policy

Application for Data and Samples

Data Policy

#### What's New

Update History

Feeds

#### Lists

Publication List

Amount of Public Info.

#### Data

Map Search

Data Tree

Detailed Search

#### Information of the Ships

NATSUSHIMA

KAIYO

YOKOSUKA

MIRAI

KAIREI

CHIKYU

KAIMEI

SHINSEI MARU

HAKUHO MARU

#### Information of the Submersibles

KAIKO

SHINKAI 2000

SHINKAI 6500

DEEP TOW

HYPER-DOLPHIN

URASHIMA

YOKOSUKA DEEP TOW

6K Camera DEEP TOW

6K Sonar DEEP TOW

KM-ROV

POWER GRAB

SAMPLER (SHELL)

POWER GRAB

SAMPLER (CLOW)

BMS

#### Go to a Cruise Information

Cruise ID:

#### Go to a Dive Information

Dive ID:

Copyright 2011 Japan Agency for Marine-Earth Science and Technology



**JAMSTEC**

国立研究開発法人  
海洋研究開発機構  
JAPAN AGENCY FOR MARINE-EARTH SCIENCE AND TECHNOLOGY