

YOKOSUKA YK16-16 Phytoplankton pigments

Last Modified: 2019-06-28

[ReadMe](#) [Observation Data](#)

Cruise ID: [YK16-16](#)

Phytoplankton pigments: Processed (PI)

Data Policy: [JAMSTEC](#)

Observation Items:

Science Keywords:

Data Information

Phytoplankton pignents measured by HPLC

Cruise Report

http://www.godac.jamstec.go.jp/catalog/data/doc_catalog/media/YK16-16_all.pdf

For Using Data

Principal Investigator

Tetsuichi Fujiki (JAMSTEC)

Use Constraints

Please contact PI (Tetsuichi Fujiki, tfujiki@jamstec.go.jp)

Data Citation

Please contact PI (Tetsuichi Fujiki, tfujiki@jamstec.go.jp)

Instrument

Instrument:

High performance liquid chromatography (HPLC)

Instrument Information:

HPLC (See YK16-16 cruise report_2.8.2 HPLC measurements of marine phytoplankton pigments p.41 for details)



Sample

seawater sample

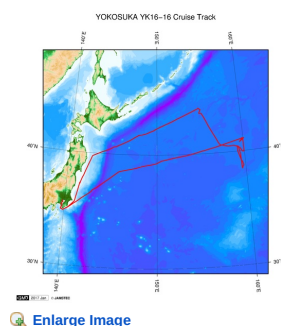
Sample ID

Pigment

Data Format

Excell file

Related Information



[Enlarge Image](#)

YK16-16

Ship Name: YOKOSUKA

Period: 2016-11-10 - 2016-11-25

Chief Scientist: Tetsuichi Fujiki (JAMSTEC)

Project Name: [Station KNOT]

Proposal ▶ Response of marine ecosystem to the ocean acidification in the subarctic western North Pacific

Title:

Update History

2019-06-28 An observation data was registerd.

Go to a Cruise Information

Cruise ID:

Go to a Dive Information

Dive ID:

HAKUHO MARU

6K Camera DEEP TOW
6K Sonar DEEP TOW
KM-ROV
POWER GRAB SAMPLER
(SHELL)
POWER GRAB SAMPLER
(CLOW)
BMS

Copyright 2011 Japan Agency for Marine-Earth Science and
Technology



JAMSTEC 国立研究開発法人
海洋研究開発機構
JAPAN AGENCY FOR MARINE-EARTH SCIENCE AND TECHNOLOGY

YOKOSUKA YK16-16 Phytoplankton pigments

Last Modified: 2019-06-28

[ReadMe](#) [Observation Data](#)

Cruise ID: **YK16-16**

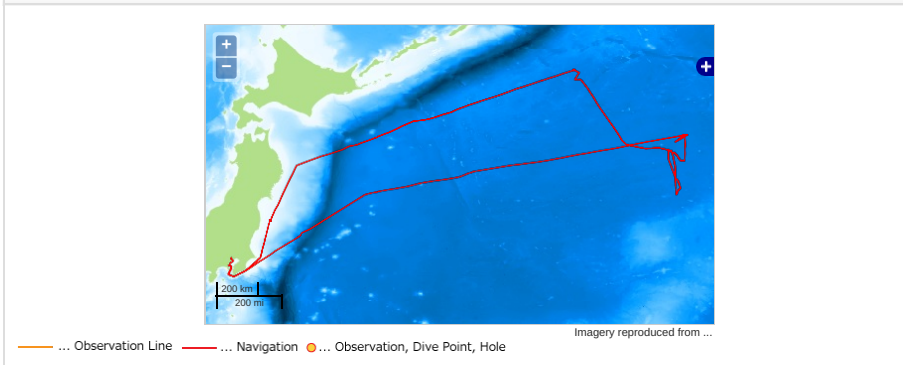
Phytoplankton pigments: Processed (PI)

Data Policy: [JAMSTEC](#)

Observation Items:

Science Keywords:

Observation Map



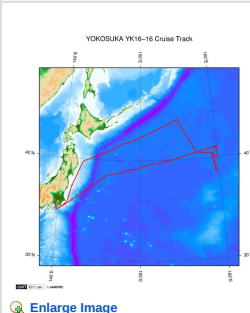
Data List

[Add to Basket](#)

File names

☐ phytoplankton_pigments.xlsx

Related Information



YK16-16

Ship Name: YOKOSUKA

Period: 2016-11-10 - 2016-11-25

Chief Scientist: Tetsuichi Fujiki (JAMSTEC)

Project Name: [Station KNOT]

Proposal ▶ Response of marine ecosystem to the ocean acidification in the subarctic western North Pacific

Title: Pacific

[Enlarge Image](#)

Update History

2019-06-28 An observation data was registered.

JAMSTEC

[Site Policy](#)

[Privacy Policy](#)

[Application for Data and Samples](#)

[Data Policy](#)

[What's New](#)

[Update History](#)

[Feeds](#)

Lists

[Publication List](#)

[Amount of Public Info.](#)

Data

[Map Search](#)

[Data Tree](#)

[Detailed Search](#)

Information of the Ships

[NATSUSHIMA](#)

[KAIYO](#)

[YOKOSUKA](#)

[MIRAI](#)

[KAIREI](#)

[CHIKYU](#)

[KAIMEI](#)

[SHINSEI MARU](#)

[HAKUHO MARU](#)

Information of the Submersibles

[KAIKO](#)

[SHINKAI 2000](#)

[SHINKAI 6500](#)

[DEEP TOW](#)

[HYPER-DOLPHIN](#)

[URASHIMA](#)

[YOKOSUKA DEEP TOW](#)

[6K Camera DEEP TOW](#)

[6K Sonar DEEP TOW](#)

[KM-ROV](#)

[POWER GRAB SAMPLER \(SHELL\)](#)

[POWER GRAB SAMPLER \(CLOW\)](#)

[BMS](#)

Go to a Cruise Information

Cruise ID:

Go to a Dive Information

Dive ID:

