

MIRAI MR13-02B Leg1 Expendable Conductivity-Temperature-Depth Profiler (XCTD)

Last Modified: 2019-08-31

[ReadMe](#) [Observation Data](#) [Data Format](#)

Cruise ID: [MR13-02B Leg1](#)

Expendable Conductivity-Temperature-Depth Profiler (XCTD): Processed (DMO)-QCed

Data Policy: [JAMSTEC](#)

Observation Items: Depth, Temperature, Salinity

Science Keywords:

OCEANS > OCEAN TEMPERATURE > WATER TEMPERATURE

OCEANS > SALINITY/DENSITY > SALINITY

For Using Data

Principal Investigator

Data Management Office

Use Constraints

See [Terms and Conditions](#) about constrain of use.

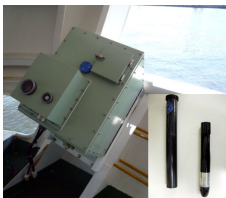
Data Citation

See [Terms and Conditions](#) about data citation.

Instrument

Instrument:

Expendable conductivity temperature
depth measurements (XCTD) (MR11-
04 -)



Instrument:

Expendable conductivity temperature
depth measurements (XCTD) (-
MR11-E02)



Overview

Using XCTD (eXpendable Conductivity Temperature Depth profiler) system, the vertical distribution of water temperature and salinity are observed during free fall of its probe part in the seawater. Observed temperature and conductivity are transmitted to the data processor on board by the digital signal. The digital signal is converted to the temperature, conductivity and depth by data processor as binary data. Binary data is transmitted from data processor to PC. The PC calculates salinity from temperature, conductivity and depth, and those properties are recorded in PC as the ASCII files.

System

(1) Launcher

Hand launcher

Manufacturer : Sippican, Inc.

Operation area : Rear upper deck

Automatic launcher

Manufacturer : Tsurumi Seiki Co., LTD.

Location : Port side of rear upper deck (4m from the sea level). The control panel is installed in the investigation room.

(2) Converter

Manufacturer : Tsurumi Seiki Co., LTD.

Location : Investigation room

Sampling rate : 40 msec

(3) XCTD probe specifications

Probe Type	TSK XCTD-1	TSK XCTD-2	TSK XCTD-3	TSK XCTD-4
Temperature range [deg-C]	-2 to 35			
Temperature accuracy [deg-C]	+/- 0.02			
Temperature resolution [deg-C]	0.01			
Conductivity range [mS/cm]	0 to 60			
Conductivity accuracy [mS/cm]	+/- 0.03			
Conductivity resolution [mS/cm]	0.015			
Measurement depth [m]	1000	1850	1000	1850
Depth accuracy [m]	5 or +/- 2% of depth; whichever is larger			
Maximum elapsed time [sec]	300	600	200	502
Rated ship speed [knot]	12	3.5	20	6

Since XCTD carries no pressure sensor, we need to estimate depth from the elapsed time. The fall-rate equation is as follows.

$$Z = at + 10E^{-3} * bt^2$$

Where Z(m) is the depth and t(sec) is the elapsed time.

In addition, coefficients of the fall-rate equation are different by probe types.

Probe Type	TSK XCTD-1	TSK XCTD-2	TSK XCTD-3	TSK XCTD-4
Coefficient-a	3.42543	3.43898	5.07598	3.68081
Coefficient-b	-0.47	-0.31	-0.72	-0.47

* Coefficients listed above are supplied by Sippican, Inc., in USA.

The list of an XCTD type used in each cast is as follows.

Cast name	Probe Serial No.	Probe Type	Launcher	Converter
201305120353	11011548	XCTD-1	Auto	MK-150N
201305131049	11021992	XCTD-1	Auto	MK-150N
201305140140	11011549	XCTD-2	Auto	MK-150N
201305150410	11011551	XCTD-1	Hand	MK-150N

Data processing

(1) For sensor's stability, values of less than 1 m for temperature and less than 3 m for salinity are replaced by missing values, respectively, based on manufacturer's recommendation.

(2) Quality control

QCed data were added flag according to the NODC (National Oceanographic Data Center) quality control procedure.

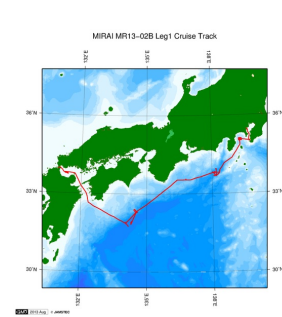
- 1) The gradient check of adjacent depth data
- 2) The density inversion check
- 3) The broad range check set up at given ocean space and depth

Please see the site of NODC of the following link for quality control procedure in detail.

[QUALITY CONTROL AND PROCESSING OF HISTORICAL OCEANOGRAPHIC TEMPERATURE, SALINITY, AND OXYGEN DATA](#)

In addition, an abnormal value is identified by a visual check, and the data after visual QC is released.

Related Information



[Enlarge Image](#)

MR13-02B Leg1

Ship Name: MIRAI
Period: 2013-05-09 - 2013-05-16
Chief Scientist: Mari Inada (JAMSTEC)

Update History

2019-08-31	An observation data was registered.
2017-06-14	An observation data was registered.
2015-05-16	An observation data was registered.

JAMSTEC

Site Policy
Privacy Policy
Application for Data and Samples
Data Policy
What's New
Update History
Feeds

Lists

Publication List
Amount of Public Info.
Data
Map Search
Data Tree
Detailed Search

Information of the Ships

NATSUSHIMA
KAIYO
YOKOSUKA
MIRAI
KAIREI
CHIKYU
KAIMEI
SHINSEI MARU
HAKUHO MARU

Information of the Submersibles

KAIKO
SHINKAI 2000
SHINKAI 6500
DEEP TOW
HYPER-DOLPHIN
URASHIMA
YOKOSUKA DEEP TOW
6K Camera DEEP TOW
6K Sonar DEEP TOW
KM-ROV
POWER GRAB SAMPLER (SHELL)
POWER GRAB SAMPLER (CLOW)
BMS

Go to a Cruise Information

Cruise ID:

Go to a Dive Information

Dive ID:

Copyright 2011 Japan Agency for Marine-Earth Science and Technology

JAMSTEC 国立研究開発法人
海洋研究開発機構
JAPAN AGENCY FOR MARINE-EARTH SCIENCE AND TECHNOLOGY

MIRAI MR13-02B Leg1 Expendable Conductivity-Temperature-Depth Profiler (XCTD)

Last Modified: 2019-08-31

[ReadMe](#) [Observation Data](#) [Data Format](#)

 Cruise ID: [MR13-02B Leg1](#)

Expendable Conductivity-Temperature-Depth Profiler (XCTD): Processed (DMO)-QCed

 Data Policy: [JAMSTEC](#)

XCTD DMO

Format Description for the Corrected Data

Provided in the Exchange Format of CCHDO (CLIVAR and Carbon Hydrographic Data Office). Please see the following link for details of Exchange Format.

[CCHDO | CLIVAR & Carbon Hydrographic Data Office](#)

Data in following cruise is not expressed with Exchange Format. Please see the site of each cruise for format.

MR02-K05 Leg1

MR04-05

Format Description for the QCed Data

Each data file contains one line header (meta data) followed by data lines for each cast.

The number of data lines are recorded in the header.

Header part

No.	Column	Content	Format	Remarks
1	1	Header ID	a1	fixed as '#'
2	3 - 6	Data ID	a4	XCTD
3	8 - 22	Cruise ID	a15	
4	33 - 40	Date	i8	YYYYMMDD (UTC)
5	42 - 45	Time	i4	hhmm (UTC)
6	47 - 55	Latitude	i2,a1,f5.2,a1	dd-mm.mmN(S)
7	57 - 66	Longitude	i3,a1,f5.2,a1	ddd-mm.mmE(W)
8	68 - 71	Number of data lines	i4	
9	72 - 73	Terminator	-	CR+LF

Data part

No.	Column	Content	Unit	Format	Remarks
1	1 - 11	Depth	m	f11.1	
2	12 - 22	Temperature	deg-C	f11.2	ITS-90
3	23 - 33	Salinity	PSU	f11.3	PSS-78
4	45 - 55	Flag	-	i11	1 - 7 : space 8 : flag of depth 9 : flag of temperature 10 : flag of salinity 11 : space * reference : Definition of Quality Control Flags
5	56 - 57	Terminator	-	-	CR+LF

Each contents of the data part is stored in 11 bytes.

Missing value is presented by '-5', and error value is presented by '-9'.

Definition of Quality Control Flags

1. Depth Flags

- 0 - accepted value
- 1 - error in recorded depth (same or less than previous depth)
- 2 - density inversion

2. Observed Level Flags

- N - missing value
- 0 - accepted value
- 1 - range outlier (outside of broad range check)
- 2 - failed inversion check
- 3 - failed gradient check
- 4 - zero anomaly
- 5 - failed combined gradient and inversion checks
- 6 - failed range and inversion checks
- 7 - failed range and gradient checks
- 8 - failed range and zero anomaly checks
- 9 - failed range and combined gradient and inversion checks
- A - failed visual check

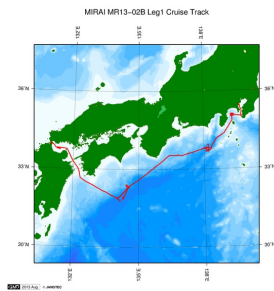
QCed data were added flag according to the NODC (National Oceanographic Data Center) quality control procedure, additionally visually checked. Please see the site of NODC of the following link for quality control procedure.

[QUALITY CONTROL AND PROCESSING OF HISTORICAL OCEANOGRAPHIC TEMPERATURE, SALINITY, AND OXYGEN DATA](#)

Sample Program

[ex_read2.f](#)

Related Information



[Enlarge Image](#)

MR13-02B Leg1

Ship Name: MIRAI

Period: 2013-05-09 - 2013-05-16

Chief Scientist: Mari Inada (JAMSTEC)

Update History

2019-08-31	An observation data was registerd.
2017-06-14	An observation data was registerd.
2015-05-16	An observation data was registerd.

JAMSTEC

[Site Policy](#)
[Privacy Policy](#)
[Application for Data and Samples](#)
[Data Policy](#)

What's New
[Update History](#)
[Feeds](#)

Lists

[Publication List](#)
[Amount of Public Info.](#)

Data

[Map Search](#)
[Data Tree](#)
[Detailed Search](#)

Information of the Ships

NATSUSHIMA
KAIYO
YOKOSUKA
MIRAI
KAIREI
CHIKYU
KAIMEI
SHINSEI MARU
HAKUHO MARU

Information of the Submersibles

KAIKO
SHINKAI 2000
SHINKAI 6500
DEEP TOW
HYPER-DOLPHIN
URASHIMA
YOKOSUKA DEEP TOW
6K Camera DEEP TOW
6K Sonar DEEP TOW
KM-ROV
POWER GRAB SAMPLER (SHELL)
POWER GRAB SAMPLER (CLOW)
BMS

Go to a Cruise Information

Cruise ID:

Go to a Dive Information

Dive ID:

Copyright 2011 Japan Agency for Marine-Earth Science and Technology



JAMSTEC
JAPAN AGENCY FOR MARINE-EARTH SCIENCE AND TECHNOLOGY

国立研究開発法人
海洋研究開発機構

MIRAI MR13-02B Leg1 Expendable Conductivity-Temperature-Depth Profiler (XCTD)

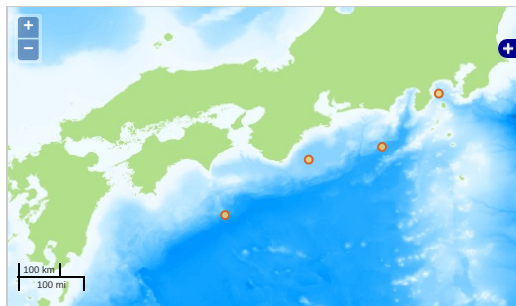
Last Modified: 2019-08-31

[ReadMe](#) [Observation Data](#) [Data Format](#)

Cruise ID: [MR13-02B Leg1](#)
Expendable Conductivity-Temperature-Depth Profiler (XCTD): Processed (DMO)-QCed
Data Policy: [JAMSTEC](#)
Observation Items: Depth, Temperature, Salinity
Science Keywords:
OCEANS > OCEAN > WATER
TEMPERATURE
OCEANS > SALINITY/DENSITY > SALINITY

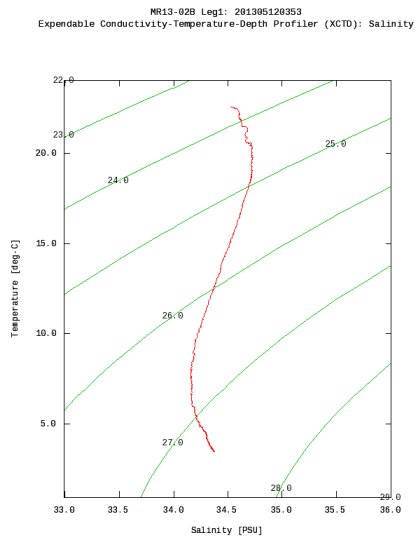
Observation Map

1. Clicking the icon displays a balloon with observation information.
2. Then click the observation name, figures will be displayed.



Figures

201305120353



Only values evaluated as "good" : all flags are 0" are plotted in profiles.
Please see Format Page for the definition of quality flags.

Data List

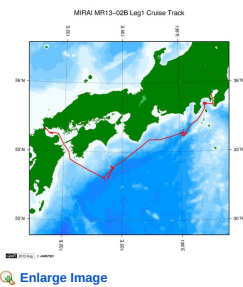
Add to Basket

File names
201305120353.dat
201305131049.dat
201305140140.dat
201305150410.dat
ex_read2.f (Sample Program)

- Observation List
The list of observation is shown as follows.

Observation	Time and Date	Lat. [°]	Lon. [°]
201305120353	2013-05-12 03:54	32.3031	134.5696
201305131049	2013-05-13 10:50	33.5333	136.4263
201305140140	2013-05-14 01:43	33.8148	138.0546
201305150410	2013-05-15 04:12	35.0001	139.3125

Related Information



[Enlarge Image](#)

MR13-02B Leg1
Ship Name: MIRAI
Period: 2013-05-09 - 2013-05-16
Chief Scientist: Mari Inada (JAMSTEC)

Update History

2019-08-31	An observation data was registered.
2017-06-14	An observation data was registered.
2015-05-16	An observation data was registered.

JAMSTEC

[Site Policy](#)
[Privacy Policy](#)
[Application for Data and Samples](#)
[Data Policy](#)

What's New
[Update History](#)
[Feeds](#)

Lists
[Publication List](#)
[Amount of Public Info.](#)

Data
[Map Search](#)
[Data Tree](#)
[Detailed Search](#)

Information of the Ships

NATSUSHIMA
KAIYO
YOKOSUKA
MIRAI
KAIREI
CHIKYU
KAIMEI
SHINSEI MARU
HAKUHO MARU

Information of the Submersibles

KAIKO
SHINKAI 2000
SHINKAI 6500
DEEP TOW
HYPER-DOLPHIN
URASHIMA
YOKOSUKA DEEP TOW
6K Camera DEEP TOW
6K Sonar DEEP TOW
KM-ROV
POWER GRAB SAMPLER (SHELL)
POWER GRAB SAMPLER (CLOW)
BMS

Go to a Cruise Information

Cruise ID:

Go to a Dive Information

Dive ID:

Copyright 2011 Japan Agency for Marine-Earth Science and Technology



JAMSTEC 国立研究開発法人
海洋研究開発機構
JAPAN AGENCY FOR MARINE-EARTH SCIENCE AND TECHNOLOGY