

KAIMEI KM18-05C Marine Meteorology

Last Modified: 2019-03-08

[ReadMe](#) [Observation Data](#) [Data Format](#)

Cruise ID: **KM18-05C**

Marine Meteorology: Processed (DMO)-Corrected

Data Policy: **JAMSTEC**

Observation Items: Atmospheric pressure, Air temperature, Dew point temperature, Relative humidity, Sea surface temperature, Zonal and meridional wind component, Precipitation, Shortwave radiation, Longwave radiation

Science Keywords:

ATMOSPHERE > ATMOSPHERIC PRESSURE > SEA LEVEL PRESSURE
ATMOSPHERE > ATMOSPHERIC RADIATION > LONGWAVE RADIATION
ATMOSPHERE > ATMOSPHERIC RADIATION > SHORTWAVE RADIATION
ATMOSPHERE > ATMOSPHERIC TEMPERATURE > AIR TEMPERATURE
ATMOSPHERE > ATMOSPHERIC WATER VAPOR > DEW POINT TEMPERATURE
ATMOSPHERE > ATMOSPHERIC WATER VAPOR > HUMIDITY
ATMOSPHERE > PRECIPITATION
OCEANS > OCEAN TEMPERATURE > SEA SURFACE TEMPERATURE
OCEANS > OCEAN WAVES > SIGNIFICANT WAVE HEIGHT
OCEANS > OCEAN WINDS > SURFACE WINDS

Cruise Report

http://www.godac.jamstec.go.jp/catalog/data/doc_catalog/media/KM18-05C_all.pdf

For Using Data

Principal Investigator

Data Management Office

Use Constraints

See [Terms and Conditions](#) about constrain of use.

Data Citation

See [Terms and Conditions](#) about data citation.

Period (UTC)

2018-05-29 00:00 – 2018-06-17 23:30

Instrument

Instrument:

General maritime meteorological observation system

Instrument:

Sea surface radiometer



Overview

The data provided here is a set of "suitably composed data" which consists of 10-minute-average corrected Atmospheric Pressure, Air Temperature, Relative Humidity, Wind Direction and Speed, Precipitation, Radiation, Sea Surface Temperature, and Wave Height observed by R/V KAIMEI. See [here](#) for detailed correction and processing method.

Specifications

| Sensors | Type | Manufacturer | Location (from sea surface) |
|-------------------------------|--------|--|------------------------------------|
| Anemometer | WMT700 | Vaisala, Finland | Foremast (23m), Compass deck (28m) |
| Tair/RH | HMP155 | Vaisala, Finland with DTR13 radiation shield Vaisala, Finland | Foremast (23m), Compass deck (28m) |
| Barometer | PTB330 | Vaisala, Finland | Navigation bridge deck (15m) |
| Rain gauge | 50202 | R.M. Young, USA | Compass deck (18m) |
| Radiometer (shortwave) | CMP-22 | Kipp & Zonen, The Netherlands | Foremast (22m) |
| Radiometer (long-wave) | CGR-4 | Kipp & Zonen, The Netherlands | Foremast (22m) |
| Wave height meter | PR-002 | MIROS, Norway | Radar mast (23m) |
| Thermometer (SST) | SBE38 | Sea-Bird Electronics, USA | Bow thruster room (-3m) |
| Sea surface radiometer (SSST) | ROSR1 | Remote Measurement & Research Co., USA | Foremast (21m) |

Sensors information

Tair/RH sensor calibration date

Foremast : 2017/11/10

Compass deck : 2015/5/15

Rain gauge calibration (Using the revision of rain data)

Minimum value (0.0 cc) : 0.1 mm

Maximum value (500.0 cc) : 49.2 mm

Date : 2018/05/28

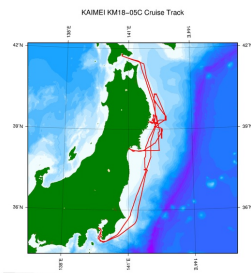
Need raw data?

Sea surface radiometer data was also collected in this cruise, but we have no plan to process the sea surface radiometer data.

If you would like the raw data set, please contact us from "Contact Us" above.

Related Information

[Cruise Data](#) [Dive Data](#)



[Enlarge Image](#)

KM18-05C

Ship Name: KAIMEI

Period: 2018-05-29 - 2018-06-17

Chief Scientist: Shinji Tsuchida (JAMSTEC)

Project Name: [Tohoku Ecosystem-Associated Marine Sciences (TEAMS)]

Proposal: Researches on marine ecosystem dynamics in the Tsunami affected area off Sanriku

Title:

Update History

2019-03-08

An observation data was registered.

JAMSTEC

[Site Policy](#)
[Privacy Policy](#)
[Application for Data and Samples](#)
[Data Policy](#)
[What's New](#)
[Update History](#)
[Feeds](#)

Lists

[Publication List](#)
[Amount of Public Info.](#)

Data

[Map Search](#)
[Data Tree](#)
[Detailed Search](#)

Information of the Ships

[NATSUSHIMA](#)
[KAIYO](#)
[YOKOSUKA](#)
[MIRAI](#)
[KAIREI](#)
[CHIKYU](#)
[KAIMEI](#)
[SHINSEI MARU](#)
[HAKUHO MARU](#)

Information of the Submersibles

[KAIKO](#)
[SHINKAI 2000](#)
[SHINKAI 6500](#)
[DEEP TOW](#)
[HYPER-DOLPHIN](#)
[URASHIMA](#)
[YOKOSUKA DEEP TOW](#)
[6K Camera DEEP TOW](#)
[6K Sonar DEEP TOW](#)
[KM-ROV](#)
[POWER GRAB SAMPLER \(SHELL\)](#)
[POWER GRAB SAMPLER \(CLOW\)](#)
[BMS](#)

Go to a Cruise Information

Cruise ID:

Go to a Dive Information

Dive ID:

Copyright 2011 Japan Agency for Marine-Earth Science and Technology

 **JAMSTEC** 国立研究開発法人
海洋研究開発機構
JAPAN AGENCY FOR MARINE-EARTH SCIENCE AND TECHNOLOGY

KAIMEI KM18-05C Marine Meteorology

Last Modified: 2019-03-08

[ReadMe](#) [Observation Data](#) [Data Format](#)

Cruise ID: [KM18-05C](#)

Marine Meteorology: Processed (DMO)-Corrected

Data Policy: [JAMSTEC](#)

Meteorology Corrected (KAIMEI)

The one record of this data has 125 bytes of data part and 7 bytes of flag part.

Single space separated.

| No. | Column | Content | Unit | format (nodata or baddata) | Remarks |
|-----|---------|---------------------------------|--------|-------------------------------|---|
| 1 | 1-12 | Date and time [YYYYMMDDhhmm] | | i12 | Every 10 minutes* * Time stamp is set at the end of average |
| 2 | 14-21 | Julian day [DDD.DDDD] | | f8.4 | Every 10 minutes* |
| 3 | 23-29 | Longitude [0 to 360] | degree | f7.3 (999.999) | Location at time stamp East longitude |
| 4 | 31-37 | Latitude [-90 to 90] | degree | f7.3 (999.999) | Location at time stamp +: North latitude -: South latitude |
| 5 | 39-44 | Atmospheric pressure | hPa | f6.1 (9999.9) | 10-minute mean* |
| 6 | 46-50 | Air temperature | deg-C | f5.1 (999.9) | 10-minute mean* |
| 7 | 52-56 | Dewpoint temperature | deg-C | f5.1 (999.9) | 10-minute mean* Calculated from 'Air temperature' and 'Relative humidity' using WMO's Formula(**) for liquid water ** WMO-No.8 (Guide to Meteorological Instruments and Methods of Observation) |
| 8 | 58-62 | Relative humidity | % | f5.1 (999.9) | 10-minute mean* |
| 9 | 64-70 | Sea surface temperature (SST) | deg-C | f7.4 (99.9999) | 10-minute mean* From TSG |
| 10 | 72-76 | Wind speed (zonal) | m/sec | f5.1 (999.9) | 10-minute mean* No anemometer height adjustment |
| 11 | 78-82 | Wind speed (meridional) | m/sec | f5.1 (999.9) | 10-minute mean* No anemometer height adjustment |
| 12 | 84-89 | Rainfall intensity | mm/hr | f6.2 (999.99) | 10-minute mean* |
| 13 | 91-96 | Shortwave radiation | W/m2 | f6.1 (9999.9) | 10-minute mean* |
| 14 | 98-102 | Long-wave radiation | W/m2 | f5.1 (999.9) | 10-minute mean* |
| 15 | 104-108 | Significant wave height | m | f5.2 (99.99) | 10-minute mean* |
| 16 | 110-114 | Wave period | second | f5.2 (99.99) | 10-minute mean* |
| 17 | 116-119 | Relative wind speed | m/sec | f4.1 (99.9) | 10-minute mean* No anemometer height adjustment |
| 18 | 121-123 | Relative wind direction | degree | i3 (999) | 10-minute mean* No anemometer height adjustment |

Flag part

| No. | Column | Description | Format | Remarks |
|-----|--------|-------------|--------|---|
| 19 | 125 | Flag 1 | i1 | QC flag for 'Atmospheric pressure' |
| 20 | 126 | Flag 2 | i1 | QC flag for 'Air temperature' and 'Relative humidity' |
| 21 | 127 | Flag 3 | i1 | QC flag for 'Wind speed' |
| 22 | 128 | Flag 4 | i1 | QC flag for 'Rainfall intensity' |
| 23 | 129 | Flag 5 | i1 | QC flag for 'Shortwave radiation' |
| 24 | 130 | Flag 6 | i1 | QC flag for 'Long-wave radiation' |
| 25 | 131 | Flag 7 | i1 | QC flag for 'Significant wave height' and 'Wave period' |

Definition of Quality Control Flags

Flag 1 : Atmospheric pressure

- 0 - accepted
- 4 - questionable
- 8 - bad (system error or non-use)

Flag 2 : Air temperature and Relative humidity

- 0 - accepted
- 4 - questionable
- 8 - bad (system error or non-use)

Flag 3 : Wind speed

- 0 - accepted
- 4 - questionable
- 8 - bad (system error or non-use)

Flag 4 : Rainfall intensity

- 0 - accepted
- 4 - questionable

8 - bad (system error or non-use)

Flag 5 : Shortwave radiation

0 - accepted

4 - questionable

8 - bad (system error or non-use)

Flag 6 : Long-wave radiation

0 - accepted

4 - questionable

8 - bad (system error or non-use)

Flag 7 : Significant wave height and period

0 - accepted

4 - questionable

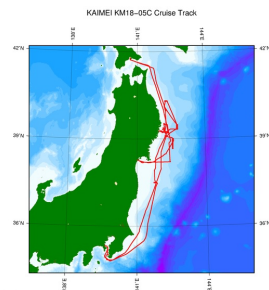
8 - bad (system error or non-use)

Data Example

| YYYYMMDDhhmm | DDD.DDDD | Lon | Lat | Press | AT | DT | RH | SST | WindU | WindV | Rain | SWR | LWR | WH | WP | RWS | RWD | QualityFlag |
|--------------|----------|---------|--------|--------|-------|-------|-------|---------|-------|-------|-------|--------|-------|-------|-------|------|-----|-------------|
| 201806260400 | 177.1667 | 139.679 | 35.419 | 9999.9 | 999.9 | 999.9 | 999.9 | 99.9999 | 999.9 | 999.9 | 999.9 | 9999.9 | 999.9 | 99.99 | 99.99 | 99.9 | 999 | 8888888 |
| 201806260410 | 177.1736 | 139.681 | 35.420 | 1014.2 | 27.2 | 20.6 | 65.9 | 99.9999 | -0.2 | 5.9 | 0.00 | 932.0 | 396.0 | 99.99 | 99.99 | 5.8 | 285 | 0000008 |
| 201806260420 | 177.1806 | 139.684 | 35.421 | 1014.1 | 26.3 | 20.9 | 70.9 | 99.9999 | -0.7 | 7.1 | 0.00 | 916.0 | 394.0 | 99.99 | 99.99 | 5.8 | 298 | 0000008 |
| 201806260430 | 177.1875 | 139.696 | 35.415 | 1013.7 | 25.4 | 21.3 | 76.7 | 99.9999 | -0.5 | 9.5 | 0.00 | 860.0 | 393.0 | 99.99 | 99.99 | 11.1 | 37 | 0000008 |

Related Information

☒ Cruise Data ☐ Dive Data



[Enlarge Image](#)

KM18-05C

Ship Name: KAIMEI

Period: 2018-05-29 - 2018-06-17

Chief Scientist: Shinji Tsuchida (JAMSTEC)

Project Name: [Tohoku Ecosystem-Associated Marine Sciences (TEAMS)]

Proposal Researches on marine ecosystem dynamics in the Tsunami affected area off Sanriku

Title:

Update History

| | |
|------------|------------------------------------|
| 2019-03-08 | An observation data was registerd. |
|------------|------------------------------------|

JAMSTEC

[Site Policy](#)

[Privacy Policy](#)

[Application for Data and Samples](#)

[Data Policy](#)

What's New

[Update History](#)

[Feeds](#)

Lists

[Publication List](#)

[Amount of Public Info.](#)

Data

[Map Search](#)

[Data Tree](#)

[Detailed Search](#)

Information of the Ships

[NATSUSHIMA](#)

[KAIYO](#)

[YOKOSUKA](#)

[MIRAI](#)

[KAIREI](#)

[CHIKYU](#)

[KAIMEI](#)

[SHINSEI MARU](#)

[HAKUHO MARU](#)

Information of the Submersibles

[KAIKO](#)

[SHINKAI 2000](#)

[SHINKAI 6500](#)

[DEEP TOW](#)

[HYPER-DOLPHIN](#)

[URASHIMA](#)

[YOKOSUKA DEEP TOW](#)

[6K Camera DEEP TOW](#)

[6K Sonar DEEP TOW](#)

[KM-ROV](#)

[POWER GRAB SAMPLER](#)

[\(SHELL\)](#)

[POWER GRAB SAMPLER](#)

[\(CLOW\)](#)

[BMS](#)

Go to a Cruise Information

Cruise ID:

Go to a Dive Information

Dive ID:

Copyright 2011 Japan Agency for Marine-Earth Science and Technology



JAMSTEC

国立研究開発法人
海洋研究開発機構
JAPAN AGENCY FOR MARINE-EARTH SCIENCE AND TECHNOLOGY

KAIMEI KM18-05C Marine Meteorology

Last Modified: 2019-03-08

[ReadMe](#) [Observation Data](#) [Data Format](#)

Cruise ID: **KM18-05C**

Marine Meteorology: Processed (DMO)-Corrected

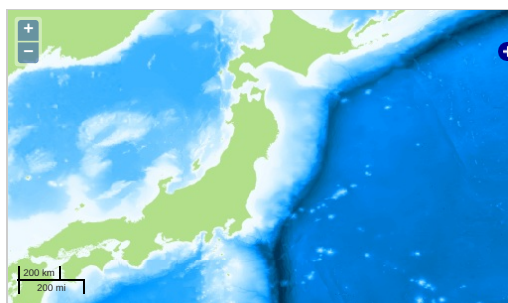
Data Policy: **JAMSTEC**

Observation Items: Atmospheric pressure, Air temperature, Dew point temperature, Relative humidity, Sea surface temperature, Zonal and meridional wind component, Precipitation, Shortwave radiation, Longwave radiation

Science Keywords:

| | | |
|------------|---------------------------|---------------------------|
| ATMOSPHERE | > ATMOSPHERIC PRESSURE | > SEA LEVEL PRESSURE |
| ATMOSPHERE | > ATMOSPHERIC RADIATION | > LONGWAVE RADIATION |
| ATMOSPHERE | > ATMOSPHERIC RADIATION | > SHORTWAVE RADIATION |
| ATMOSPHERE | > ATMOSPHERIC TEMPERATURE | > AIR TEMPERATURE |
| ATMOSPHERE | > ATMOSPHERIC WATER VAPOR | > DEW POINT TEMPERATURE |
| ATMOSPHERE | > ATMOSPHERIC WATER VAPOR | > HUMIDITY |
| ATMOSPHERE | > PRECIPITATION | |
| OCEANS | > OCEAN TEMPERATURE | > SEA SURFACE TEMPERATURE |
| OCEANS | > OCEAN WAVES | > SIGNIFICANT WAVE HEIGHT |
| OCEANS | > OCEAN WINDS | > SURFACE WINDS |

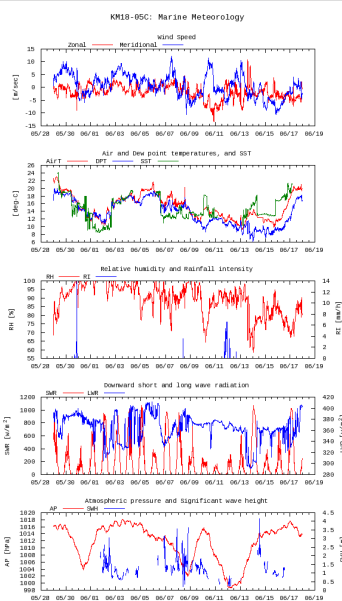
Observation Map



— ... Observation Line — ... Navigation ● ... Observation, Dive Point, Hole

Imagery reproduced from ...

Figures



Data List

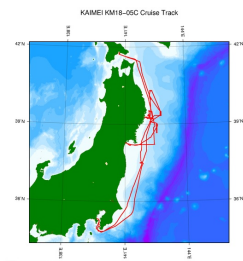
[Add to Basket](#)

File names

☐ KM18-05C.dat

Related Information

[Cruise Data](#) [Dive Data](#)



[Enlarge Image](#)

KM18-05C

Ship Name: KAIMEI
Period: 2018-05-29 - 2018-06-17
Chief Scientist: Shinji Tsuchida (JAMSTEC)
Project Name: [Tohoku Ecosystem-Associated Marine Sciences (TEAMS)]
Proposal Researches on marine ecosystem dynamics in the Tsunami affected area off Sanriku
Title:

Update History

| | |
|------------|------------------------------------|
| 2019-03-08 | An observation data was registerd. |
|------------|------------------------------------|

JAMSTEC

[Site Policy](#)
[Privacy Policy](#)
[Application for Data and Samples](#)
[Data Policy](#)
[What's New](#)
[Update History](#)
[Feeds](#)

Lists

[Publication List](#)
[Amount of Public Info.](#)

Data

[Map Search](#)
[Data Tree](#)
[Detailed Search](#)

Information of the Ships

NATSUSHIMA
KAIYO
YOKOSUKA
MIRAI
KAIREI
CHIKYU
KAIMEI
SHINSEI MARU
HAKUHO MARU

Information of the Submersibles

KAIKO
SHINKAI 2000
SHINKAI 6500
DEEP TOW
HYPER-DOLPHIN
URASHIMA
YOKOSUKA DEEP TOW
6K Camera DEEP TOW
6K Sonar DEEP TOW
KM-ROV
POWER GRAB SAMPLER (SHELL)
POWER GRAB SAMPLER (CLOW)
BMS

Go to a Cruise Information

Cruise ID:

Go to a Dive Information

Dive ID:

Copyright 2011 Japan Agency for Marine-Earth Science and Technology



JAMSTEC 国立研究開発法人
海洋研究開発機構
JAPAN AGENCY FOR MARINE-EARTH SCIENCE AND TECHNOLOGY