

KAIREI KR04-10 Leg2 Navigation

Last Modified: 2012-11-25

[ReadMe](#) [Observation Data](#) [Data Format](#)

Cruise ID: [KR04-10 Leg2](#)

Navigation: Processed (DMO)-QCed

Data Policy: [JAMSTEC](#)

Observation Items:

Science Keywords:

Cruise Report

http://www.godac.jamstec.go.jp/catalog/data/doc_catalog/media/JAM_RandD02_01.pdf

For Using Data

Principal Investigator

Data Management Office

Use Constraints

See [Terms and Conditions](#) about constrain of use.

Data Citation

See [Terms and Conditions](#) about data citation.

Instrument

Instrument:

Radio navigation system



Overview

The following information is continuously collected and recorded as the Navigation QCed data during the cruise of R/V KAIREI.

Time
Location
Surface temperature
Wind direction and velocity
Current direction and velocity
Water depth

Data are recorded every one minute, and data file named after cruise code.

System

Manufacturer: SENA Co., Ltd.

Model: Sena Advanced Integrated Navigation System

Data format version 02.6

Sensor specifications

1) GPS receiver

Manufacturer: Leica Geosystems AG (GPS1)

Model: MX9400N

Location: Mast [starboard side]

Manufacturer: Leica Geosystems AG (GPS2)

Model: MX9400N

Location: Mast [port side]

Manufacturer: Thales GeoSolutions (SkyFix1)

Model: SkyFix

Location: Mast [starboard side]

Manufacturer: Thales GeoSolutions (SkyFix2)

Model: SkyFix

Location: Mast [port side]

2) Thermometer (seawater temperature)

Manufacturer: Murayama DENKI Ltd.

Model: DT-3110ARZ

Range: -10 - 50degC

Accuracy: ± 0.1 degC

3) Doppler sonar

Manufacturer: FURUNO ELECTRIC CO., LTD.

Model: DS-30

Range: Ship speed: -10.00 - +40.00knot [Cross direction]

-9.99 - +9.99knot [Horizontal direction]

Current direction and speed: 0.0 - 9.9knot [All direction]

Accuracy: Current speed: $\pm (2.0\% + 0.2\text{knot})$

4) Multi narrow beam echo sounder

Manufacturer: SEABEAM INSTRUMENTS

Model: Sea Beam 2112.004

Frequency: 12kHz

Range: 50 - 11000m

Range: 00 - 2000m

5)Anemometer

Manufacturer:Nunotani Nautical Instrument Mfg. Co., Ltd.

Model: 4PI

Altitude: 27m (above sea level)

Range: Wind direction: all direction

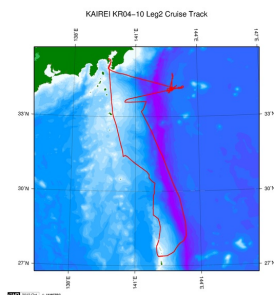
Wind speed: 2 - 60m/s

Accuracy: Wind direction: +-5degree

Wind speed: 10m/s or less +-0.5m/s

10m/s or more +-0.5%

Related Information



[Enlarge Image](#)

KR04-10 Leg2

Ship Name: KAIKEI

Period: 2004-08-21 - 2004-09-02

Chief Scientist: Park Jin Oh (JAMSTEC)

Update History

| | |
|------------|------------------------------------|
| 2012-11-25 | An observation data was registerd. |
|------------|------------------------------------|

JAMSTEC

Site Policy

Privacy Policy

Application for Data and

Samples

Data Policy

What's New

Update History

Feeds

Lists

Publication List

Amount of Public Info.

Data

Map Search

Data Tree

Detailed Search

Information of the Ships

NATSUSHIMA

KAIYO

YOKOSUKA

MIRAI

KAIKEI

CHIKYU

KAIKEI

SHINSEI MARU

HAKUHO MARU

Information of the

Submersibles

KAIKO

SHINKAI 2000

SHINKAI 6500

DEEP TOW

HYPER-DOLPHIN

URASHIMA

YOKOSUKA DEEP TOW

6K Camera DEEP TOW

6K Sonar DEEP TOW

KM-ROV

POWER GRAB SAMPLER

(SHELL)

POWER GRAB SAMPLER

(CLOW)

BMS

Go to a Cruise Information

Cruise ID:

Go to a Dive Information

Dive ID:

Copyright 2011 Japan Agency for Marine-Earth Science and Technology



JAMSTEC

国立研究開発法人
海洋研究開発機構

JAPAN AGENCY FOR MARINE-EARTH SCIENCE AND TECHNOLOGY

KAIREI KR04-10 Leg2 Navigation

Last Modified: 2012-11-25

[ReadMe](#) [Observation Data](#) [Data Format](#)

 Cruise ID: [KR04-10 Leg2](#)

Navigation: Processed (DMO)-QCed

 Data Policy: [JAMSTEC](#)

Navigation Qced

The one record of this data has 117 bytes of data part and 12 bytes of flag part.

Data part

| No. | Column | Content | Format | Unit | Remarks |
|-----|-----------|----------------------------------|---------------|-----------------|--|
| 1 | 1 - 8 | Date | i4,i2,i2 | | YYYYMMDD (UTC) |
| 2 | 10 - 15 | Time | i2,i2,i2 | | hhmmss (UTC) |
| 3 | 17 - 19 | Datum | a3 | | W84:WGS84 TD_:TOKYO DATUM |
| 4 | 21 - 31 | Latitude | i2,x1,f7.4,a1 | degree - minute | dd-mm.mmmN(S) |
| 5 | 33 - 44 | Longitude | i3,x1,f7.4,a1 | degree - minute | ddd-mm.mmmE(W) |
| 6 | 46 - 49 | Ship speed (Ground) | f4.1 | knot | |
| 7 | 51 - 55 | Course (Ground) | f5.1 | degree | |
| 8 | 57 - 60 | Ship speed (Water) | f4.1 | knot | *1 |
| 9 | 62 - 66 | Gyro | f5.1 | degree | |
| 10 | 68 - 72 | Air temperature | f5.1 | deg-C | |
| 11 | 74 - 78 | Sea surface temperature (SST) | f5.2 | deg-C | |
| 12 | 80 - 85 | Atmospheric pressure | f6.1 | hPa | Adjusted to the sea surface level |
| 13 | 87 - 89 | Relative humidity | i3 | % | |
| 14 | 91 - 93 | True wind direction | i3 | degree | Averaged over the previous 6 seconds *2 |
| 15 | 95 - 98 | True wind speed | f4.1 | m/sec | Averaged over the previous 6 seconds *2 No anemometer height adjustment |
| 16 | 100 - 106 | Depth | f7.1 | m | |
| 17 | 108 - 112 | Current direction | f5.1 | degree | Calculated value |
| 18 | 114 - 117 | Current speed | f4.1 | knot | Calculated value |

Flag part

| No. | Column | Description | Format | Remarks |
|-----|--------|-------------|--------|---|
| 19 | 119 | Flag 1 | i1 | QC flag for 'Latitude' and 'Longitude' |
| 20 | 120 | Flag 2 | i1 | QC flag for 'Ship speed (Ground)' |
| 21 | 121 | Flag 3 | i1 | QC flag for 'Course (Ground)' |
| 22 | 122 | Flag 4 | i1 | QC flag for 'Ship speed (Water)' |
| 23 | 123 | Flag 5 | i1 | QC flag for 'Gyro' |
| 24 | 124 | Flag 6 | i1 | QC flag for 'Air temperature' |
| 25 | 125 | Flag 7 | i1 | QC flag for 'Sea Surface Temperature (SST)' |
| 26 | 126 | Flag 8 | i1 | QC flag for 'Atmospheric pressure' |
| 27 | 127 | Flag 9 | i1 | QC flag for 'Relative humidity' |
| 28 | 128 | Flag 10 | i1 | QC flag for 'Wind direction' and 'Wind speed' |
| 29 | 129 | Flag 11 | i1 | QC flag for 'Depth' |
| 30 | 130 | Flag 12 | i1 | QC flag for 'Current direction' and 'Current speed' |

*1 The plus and minus sign of No.8 [Ship speed (Water)] about R/V KAIREI indicates the velocity of direction of a bow and stem.

*2 No.14 [True wind direction] and No.15 [True wind speed] about R/V SHINSEI MARU are instantaneous value.

* The terminator of each record is 'CR+LF' code.

* Missing value and format error value are filled with '9'.

Definition of Quality Control Flags

Flag 1 : Longitude and Latitude

- 1 - accepted
- 2 - questionable value
- 4 - failed in location check
- 9 - system error or input error

Flag 2 : Ship speed (ground)

- 1 - accepted
- 2 - questionable value
- 4 - failed range check (under 20 knots)
- 9 - system error or input error

Flag 3 : Course (ground)

- 1 - accepted
- 2 - questionable value
- 4 - failed range check (0 ~ 360 degree)
- 9 - system error or input error

Flag 4 : Ship speed (water)

- 1 - accepted
- 4 - failed range check (under 20 knots)
- 9 - system error or input error

9 - system error or input error

Flag 5 : Gyro

- 1 - accepted
- 4 - failed range check (0 ~ 360 degree)
- 9 - system error or input error

Flag 6 : Air temperature

- 3 - assumed good*
- 4 - failed range check (-20 ~ 40 degC)
- 9 - system error or input error

Flag 7 : Sea surface temperature

- 3 - assumed good*
- 4 - failed range check (-3 ~ 37 degC)
- 9 - system error or input error

Flag 8 : Atmospheric pressure

- 3 - assumed good*
- 4 - failed range check (890 ~ 1040 hPa)
- 9 - system error or input error

Flag 9 : Relative humidity

- 3 - assumed good*
- 4 - failed range check (0 ~ 100 %)
- 9 - system error or input error

Flag 10 : Wind direction and wind speed

- 3 - assumed good*
- 4 - failed range check (0 ~ 360 degree : wind direction, 0 ~ 60 m/s : wind speed)
- 9 - system error or input error

Flag 11 : Depth

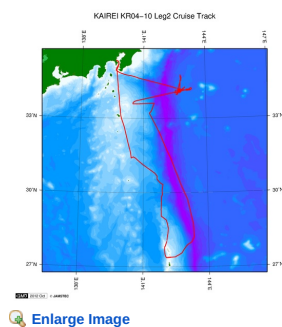
- 3 - assumed good*
- 4 - failed range check (4 ~ 11000 m)
- 9 - system error or input error

Flag 12 : Current direction and current speed

- 3 - assumed good*
- 4 - failed range check (0 ~ 360 degree : current direction, 0 ~ 5 knots : current speed)
- 9 - system error or input error

* 'assumed good' means that this data passed range check but may contains leap or inappropriate zero.

Related Information



KR04-10 Leg2

Ship Name: KAIREI
Period: 2004-08-21 - 2004-09-02
Chief Scientist: Park Jin Oh (JAMSTEC)

Update History

2012-11-25 An observation data was registerd.

JAMSTEC

Site Policy
Privacy Policy
Application for Data and Samples
Data Policy

What's New
Update History
Feeds

Lists

Publication List
Amount of Public Info.

Data

Map Search
Data Tree
Detailed Search

Information of the Ships

NATSUSHIMA
KAIYO
YOKOSUKA
MIRAI
KAIREI
CHIKYU
KAIMEI
SHINSEI MARU
HAKUHO MARU

Information of the Submersibles

KAIKO
SHINKAI 2000
SHINKAI 6500
DEEP TOW
HYPER-DOLPHIN
URASHIMA
YOKOSUKA DEEP TOW
6K Camera DEEP TOW
6K Sonar DEEP TOW
KM-ROV
POWER GRAB SAMPLER (SHELL)
POWER GRAB SAMPLER (CLOW)
BMS

Go to a Cruise Information

Cruise ID: Go

Go to a Dive Information

Dive ID:



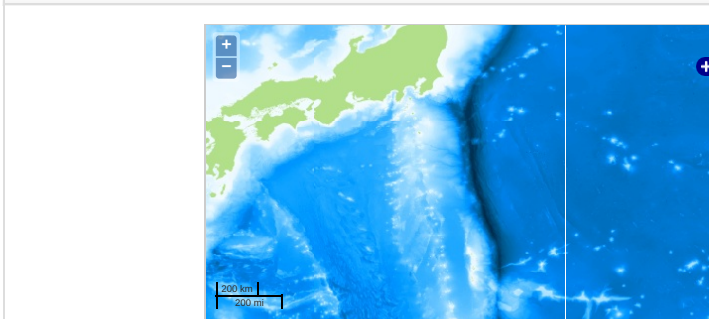
KAIREI KR04-10 Leg2 Navigation

Last Modified: 2012-11-25

[ReadMe](#) [Observation Data](#) [Data Format](#)

Cruise ID: **KR04-10 Leg2**
Navigation: Processed (DMO)-QCed
Data Policy: [JAMSTEC](#)
Observation Items:
Science Keywords:

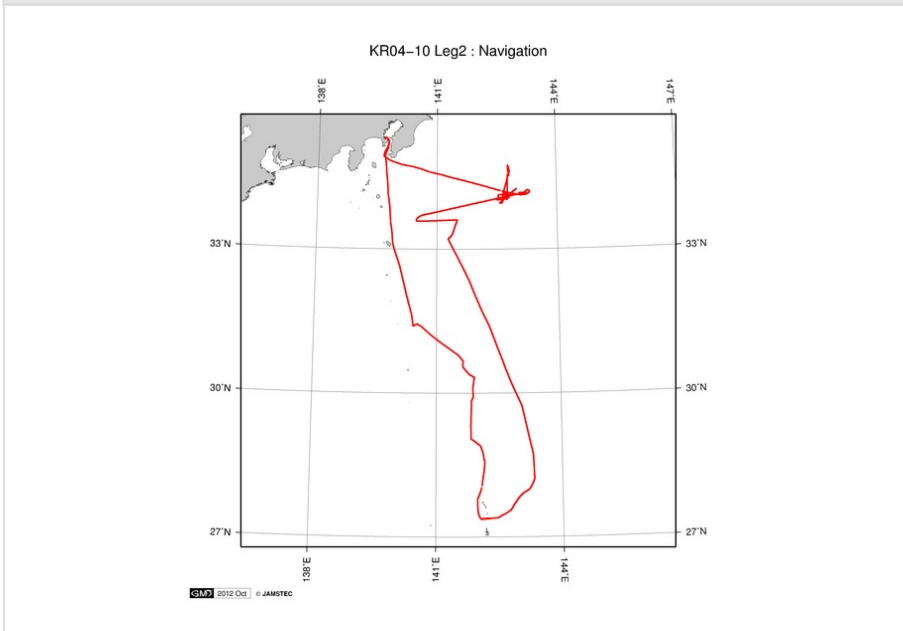
Observation Map



— ... Observation Line — ... Navigation ● ... Observation, Dive Point, Hole

Imagery reproduced from ...

Figures



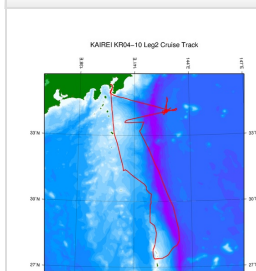
Data List

[Add to Basket](#)

File names

☐ KR04-10_leg2.dat

Related Information



[Enlarge Image](#)

KR04-10 Leg2
Ship Name: KAIREI
Period: 2004-08-21 - 2004-09-02
Chief Scientist: Park Jin Oh (JAMSTEC)

Update History

2012-11-25 An observation data was registered.

JAMSTEC

[Site Policy](#)
[Privacy Policy](#)

[Application for Data and Samples](#)
[Data Policy](#)

[What's New](#)
[Update History](#)
[Feeds](#)

Lists

[Publication List](#)
[Amount of Public Info.](#)

Data

[Map Search](#)
[Data Tree](#)
[Detailed Search](#)

Information of the Ships

[NATSUSHIMA](#)
[KAIYO](#)
[YOKOSUKA](#)
[MIRAI](#)
[KAIREI](#)
[CHIKYU](#)
[KAIMEI](#)
[SHINSEI MARU](#)
[HAKUHO MARU](#)

Information of the Submersibles

[KAIKO](#)
[SHINKAI 2000](#)
[SHINKAI 6500](#)
[DEEP TOW](#)
[HYPER-DOLPHIN](#)
[URASHIMA](#)
[YOKOSUKA DEEP TOW](#)
[6K Camera DEEP TOW](#)
[6K Sonar DEEP TOW](#)
[KM-ROV](#)
[POWER GRAB SAMPLER \(SHELL\)](#)
[POWER GRAB SAMPLER \(CLOW\)](#)
[BMS](#)

Go to a Cruise Information

Cruise ID:

Go to a Dive Information

Dive ID:

