

MIRAI MR03-K04 Leg5 Shipboard Acoustic Doppler Current Profiler (ADCP)

Last Modified: 2017-04-11

[ReadMe](#) [Observation Data](#)

Cruise ID: [MR03-K04 Leg5](#)

Shipboard Acoustic Doppler Current Profiler (ADCP): Processed (PI)

Data Policy: [JAMSTEC](#)

Observation Items: Depth, Absolute velocity (zonal, meridional and vertical)

Science Keywords:

OCEANS > OCEAN CIRCULATION > OCEAN CURRENTS

Cruise Report

http://www.godac.jamstec.go.jp/catalog/data/doc_catalog/media/MR03-K04_leg5_all.pdf

For Using Data

Principal Investigator

Yasushi Yoshikawa (JAMSTEC)

Use Constraints

See [Terms and Conditions](#) about constrain of use.

Data Citation

See [Terms and Conditions](#) about data citation.

Instrument

Instrument:

Shipboard acoustic doppler current profiler (ADCP) (MR08-02 -)

Instrument:

Shipboard acoustic doppler current profiler (ADCP) (- MR08-E01)



About this data

- Please see the [Data book](#) for details of data.

- File name

ADCP_leg5.txt:288profiles

- Data structure of each profile

Line 1: header 1

Column 1-10: cruise code

Column 12-14: WHP line name

Column 16-22: analyzed point

Column 24-33: date(mm/dd/yyyy)

Column 35-39: time(hh:mm) in UTC

Column 41-48: latitude

Column 50-58: longitude

Line 2-36: data

Column 1-5: depth(m)

Column 7-12: zonal velocity(m/s)

Column 14-19: meridional velocity(m/s)

Column 21-26: standard error(m/s)

*1 On the CTD station: The CTD station name (e.g. '622') represents the analyzed point in the header. Time and position when the CTD operation was begun are recorded.

*2 On the way to the next CTD station: The hyphenated two CTD station names (e.g. '622-621') represent the analyzed point in the header. Recorded time is when the ship passed on mid-longitude of the CTD stations.

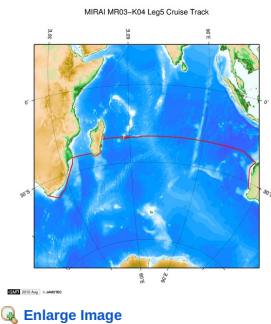
*3 The '99.999' in the data represents no available data.

Contact

Yasushi Yoshikawa (JAMSTEC)

yoshikaway@jamstec.go.jp

Related Information



MR03-K04 Leg5

Ship Name: MIRAI

Period: 2003-12-09 - 2004-01-24

Chief Scientist: Masao Fukasawa (JAMSTEC)

Project Name: [Blue Earth Global Expedition 2003,POST-WOCE Hydrography]

Update History

2017-04-11	An observation data was registerd.
2012-12-25	An observation data was registerd.

JAMSTEC

[Site Policy](#)

[Privacy Policy](#)

[Application for Data and Samples](#)

[Data Policy](#)

[What's New](#)

[Update History](#)

[Feeds](#)

Lists

[Publication List](#)

[Amount of Public Info.](#)

Data

[Map Search](#)

[Data Tree](#)

[Detailed Search](#)

Information of the Ships

[NATSUSHIMA](#)

[KAIYO](#)

[YOKOSUKA](#)

[MIRAI](#)

[KAIREI](#)

[CHIKYU](#)

[KAIMEI](#)

[SHINSEI MARU](#)

[HAKUHO MARU](#)

Information of the Submersibles

[KAIKO](#)

[SHINKAI 2000](#)

[SHINKAI 6500](#)

[DEEP TOW](#)

[HYPER-DOLPHIN](#)

[URASHIMA](#)

[YOKOSUKA DEEP TOW](#)

[6K Camera DEEP TOW](#)

[6K Sonar DEEP TOW](#)

[KM-ROV](#)

[POWER GRAB SAMPLER \(SHELL\)](#)

[POWER GRAB SAMPLER \(CLOW\)](#)

[BMS](#)

Go to a Cruise Information

Cruise ID:

Go to a Dive Information

Dive ID:

Copyright 2011 Japan Agency for Marine-Earth Science and Technology



JAMSTEC

国立研究開発法人
海洋研究開発機構
JAPAN AGENCY FOR MARINE-EARTH SCIENCE AND TECHNOLOGY

MIRAI MR03-K04 Leg5 Shipboard Acoustic Doppler Current Profiler (ADCP)

Last Modified: 2017-04-11

[ReadMe](#)

[Observation Data](#)

Cruise ID: [MR03-K04 Leg5](#)

Shipboard Acoustic Doppler Current Profiler (ADCP) Processed (PI)

Data Policy: [JAMSTEC](#)

Observation Items: Depth, Absolute velocity (zonal, meridional and vertical)

Science Keywords:

OCEANS > OCEAN CIRCULATION > OCEAN CURRENTS

Cruise Report

http://www.godac.jamstec.go.jp/catalog/data/doc_catalog/media/MR03-K04_leg5_all.pdf

[For Using Data](#)

Principal Investigator

Yasushi Yoshikawa (JAMSTEC)

Use Constraints

See [Terms and Conditions](#) about constrain of use.

Data Citation

See [Terms and Conditions](#) about data citation.

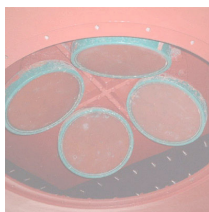
Instrument

Instrument:

Shipboard acoustic doppler current profiler (ADCP) (MR08-02 -)

Instrument:

Shipboard acoustic doppler current profiler (ADCP) (- MR08-E01)



About this data

- Please see the [Data book](#) for details of data.

- File name
ADCP_leg5.txt:288profiles
- Data structure of each profile

Line 1: header 1

Column 1-10: cruise code

Column 12-14: WHP line name

Column 16-22: analyzed point

Column 24-33: date(mm/dd/yyyy)

Column 35-39: time(hh:mm) in UTC

Column 41-48: latitude

Column 50-58: longitude

Line 2-36: data

Column 1-5: depth(m)

Column 7-12: zonal velocity(m/s)

Column 14-19: meridional velocity(m/s)

Column 21-26: standard error(m/s)

*1 On the CTD station: The CTD station name (e.g. '622') represents the analyzed point in the header. Time and position when the CTD operation was begun are recorded.

*2 On the way to the next CTD station: The hyphenated two CTD station names (e.g. '622-621') represent the analyzed point in the header. Recorded time is when the ship passed on mid-longitude of the CTD stations.

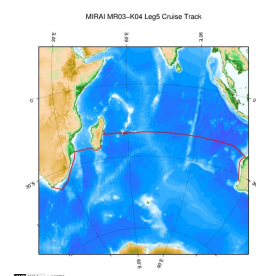
*3 The '99.999' in the data represents no available data.

Contact

Yasushi Yoshikawa (JAMSTEC)

yoshikaway@jamstec.go.jp

Related Information



MR03-K04 Leg5

Ship Name: MIRAI

Period: 2003-12-09 - 2004-01-24

Chief Scientist: Masao Fukasawa (JAMSTEC)

Project Name: [Blue Earth Global Expedition 2003, POST-WOCE Hydrography]

 [Enlarge Image](#)

Update History

2017-04-11	An observation data was registerd.
2012-12-25	An observation data was registerd.

JAMSTEC

[Site Policy](#)
[Privacy Policy](#)
[Application for Data and Samples](#)
[Data Policy](#)

What's New
[Update History](#)
[Feeds](#)

Lists

[Publication List](#)
[Amount of Public Info.](#)

Data

[Map Search](#)
[Data Tree](#)
[Detailed Search](#)

Information of the Ships

[NATSUSHIMA](#)
[KAIYO](#)
[YOKOSUKA](#)
[MIRAI](#)
[KAIREI](#)
[CHIKYU](#)
[KAIMEI](#)
[SHINSEI MARU](#)
[HAKUHO MARU](#)

Information of the Submersibles

[KAIKO](#)
[SHINKAI 2000](#)
[SHINKAI 6500](#)
[DEEP TOW](#)
[HYPER-DOLPHIN](#)
[URASHIMA](#)
[YOKOSUKA DEEP TOW](#)
[6K Camera DEEP TOW](#)
[6K Sonar DEEP TOW](#)
[KM-ROV](#)
[POWER GRAB SAMPLER \(SHELL\)](#)
[POWER GRAB SAMPLER \(CLOW\)](#)
[BMS](#)

Go to a Cruise Information

Cruise ID:

Go to a Dive Information

Dive ID:

Copyright 2011 Japan Agency for Marine-Earth Science and Technology



JAMSTEC

国立研究開発法人
海洋研究開発機構
JAPAN AGENCY FOR MARINE-EARTH SCIENCE AND TECHNOLOGY

MIRAI MR03-K04 Leg5 Shipboard Acoustic Doppler Current Profiler (ADCP)

Last Modified: 2017-04-11

[ReadMe](#) [Observation Data](#)

Cruise ID: [MR03-K04 Leg5](#)

Shipboard Acoustic Doppler Current Profiler (ADCP): Processed (PI)

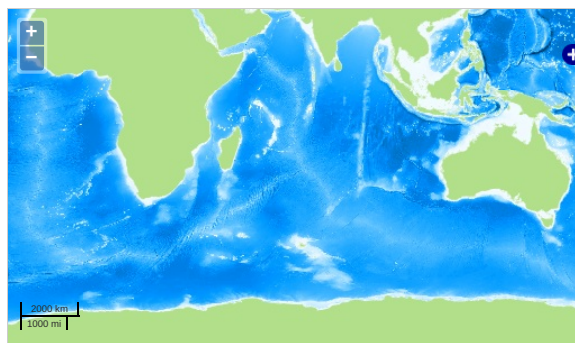
Data Policy: [JAMSTEC](#)

Observation Items: Depth, Absolute velocity (zonal, meridional and vertical)

Science Keywords:

OCEANS > OCEAN CIRCULATION > OCEAN CURRENTS

Observation Map



... Observation Line ... Navigation ... Observation, Dive Point, Hole

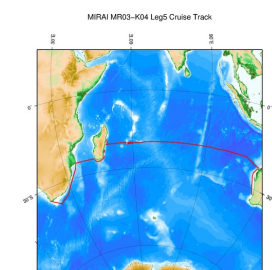
Imagery reproduced from ...

Data List

File names

☐ adcp_leg5.txt

Related Information



[Enlarge Image](#)

MR03-K04 Leg5

Ship Name: MIRAI

Period: 2003-12-09 - 2004-01-24

Chief Scientist: Masao Fukasawa (JAMSTEC)

Project Name: [Blue Earth Global Expedition 2003, POST-WOCE Hydrography]

Update History

2017-04-11	An observation data was registered.
2012-12-25	An observation data was registered.

JAMSTEC

[Site Policy](#)
[Privacy Policy](#)
[Application for Data and Samples](#)
[Data Policy](#)

[What's New](#)
[Update History](#)
[Feeds](#)

Lists

[Publication List](#)
[Amount of Public Info.](#)

[Data](#)
[Map Search](#)
[Data Tree](#)
[Detailed Search](#)

Information of the Ships

[NATSUSHIMA](#)
[KAIYO](#)
[YOKOSUKA](#)
[MIRAI](#)
[KAIREI](#)
[CHIKYU](#)
[KAIMEI](#)
[SHINSEI MARU](#)
[HAKUHO MARU](#)

Information of the Submersibles

[KAIKO](#)
[SHINKAI 2000](#)
[SHINKAI 6500](#)
[DEEP TOW](#)
[HYPER-DOLPHIN](#)
[URASHIMA](#)
[YOKOSUKA DEEP TOW](#)
[6K Camera DEEP TOW](#)
[6K Sonar DEEP TOW](#)
[KM-ROV](#)
[POWER GRAB SAMPLER \(SHELL\)](#)
[POWER GRAB SAMPLER \(CLOW\)](#)
[BMS](#)

Go to a Cruise Information

Cruise ID:

Go to a Dive Information

Dive ID: