

KAIREI KR08-10 Magnetic susceptibility and physical properties data

Last Modified: 2012-10-26

[ReadMe](#) [Observation Data](#)

Cruise ID: [KR08-10](#)

Magnetic susceptibility and physical properties data : Processed (PI)

Data Policy: [JAMSTEC](#)

Observation Items:

Science Keywords:

Data Information

Data include magnetic susceptibility, density, water content, porosity and void ratio.

Related Dive No. : KAIKO 430

Cruise Report

http://www.godac.jamstec.go.jp/catalog/data/doc_catalog/media/KR08-10_all.pdf

For Using Data

Principal Investigator

Kiichiro Kawamura (Fukada Geological Institute)

Use Constraints

None

Data Citation

None

Instrument

Instrument:

Magnetic susceptibility: Kappabridge
KLY-4 (in JAMSTEC, Kanamatsu)

Instrument Information:



Instrument:

Physical properties: Electric balance
Instrument Information:



Sample

Other Samples (Push core)

Sample ID

KR08-10 7K#430C-1

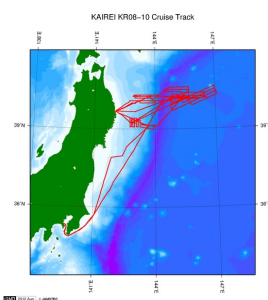
Data Format

Microsoft Excel file (.xls)

Magnetic susceptibility in volumetric unit (SI)

Related Information

☒ Cruise Data ☐ Dive Data



[Enlarge Image](#)

KR08-10

Ship Name: KAIKEI

Period: 2008-08-18 - 2008-09-10

Chief Scientist: Makoto Yamano (The University of Tokyo)/Tadanori Goto (JAMSTEC)

Proposal Title: Studies on the thermal structure and the water distribution in the upper part of the Pacific plate subducting along the Japan Trench

Update History

2012-10-26 An observation data was registered.

JAMSTEC

[Site Policy](#)
[Privacy Policy](#)
[Application for Data and Samples](#)
[Data Policy](#)

[What's New](#)
[Update History](#)
[Feeds](#)

Lists

[Publication List](#)
[Amount of Public Info.](#)

Data

[Map Search](#)
[Data Tree](#)
[Detailed Search](#)

Information of the Ships

[NATSUSHIMA](#)
[KAIYO](#)
[YOKOSUKA](#)
[MIRAI](#)
[KAIREI](#)
[CHIKYU](#)
[KAIMEI](#)
[SHINSEI MARU](#)
[HAKUHO MARU](#)

Information of the Submersibles

[KAIKO](#)
[SHINKAI 2000](#)
[SHINKAI 6500](#)
[DEEP TOW](#)
[HYPER-DOLPHIN](#)
[URASHIMA](#)
[YOKOSUKA DEEP TOW](#)
[6K Camera DEEP TOW](#)
[6K Sonar DEEP TOW](#)

Go to a Cruise Information

Cruise ID:

Go to a Dive Information

Dive ID:

KM-ROV
POWER GRAB SAMPLER
(SHELL)
POWER GRAB SAMPLER
(CLOW)
BMS

Copyright 2011 Japan Agency for Marine-Earth Science and
Technology



JAMSTEC 国立研究開発法人
海洋研究開発機構
JAPAN AGENCY FOR MARINE-EARTH SCIENCE AND TECHNOLOGY

KAIREI KR08-10 Magnetic susceptibility and physical properties data

Last Modified: 2012-10-26

[ReadMe](#) [Observation Data](#)

Cruise ID: **KR08-10**

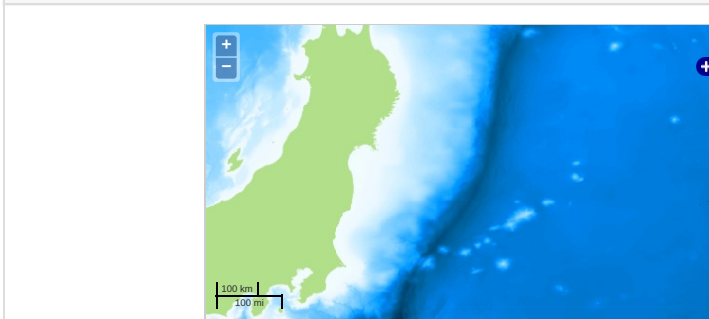
Magnetic susceptibility and physical properties data Processed (PI)

Data Policy: [JAMSTEC](#)

Observation Items:

Science Keywords:

Observation Map



... Observation Line ... Navigation ... Observation, Dive Point, Hole

Data List

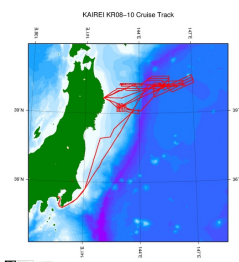
[Add to Basket](#)

File names

☐ KR08-10_sediment.zip

Related Information

☒ Cruise Data ☐ Dive Data



[Enlarge Image](#)

KR08-10

Ship Name: KAIKEI

Period: 2008-08-18 - 2008-09-10

Chief Scientist: Makoto Yamano (The University of Tokyo)/Tadanori Goto (JAMSTEC)

Proposal: Studies on the thermal structure and the water distribution in the upper part of the Pacific

Title: plate subducting along the Japan Trench

Update History

2012-10-26

An observation data was registered.

JAMSTEC

[Site Policy](#)
[Privacy Policy](#)
[Application for Data and Samples](#)
[Data Policy](#)
[What's New](#)
[Update History](#)
[Feeds](#)

Lists

[Publication List](#)
[Amount of Public Info.](#)
[Data](#)
[Map Search](#)
[Data Tree](#)
[Detailed Search](#)

Information of the Ships

[NATSUSHIMA](#)
[KAIYO](#)
[YOKOSUKA](#)
[MIRAI](#)
[KAIREI](#)
[CHIKYU](#)
[KAIMEI](#)
[SHINSEI MARU](#)
[HAKUHO MARU](#)

Information of the Submersibles

[KAICO](#)
[SHINKAI 2000](#)
[SHINKAI 6500](#)
[DEEP TOW](#)
[HYPER-DOLPHIN](#)
[URASHIMA](#)
[YOKOSUKA DEEP TOW](#)
[6K Camera DEEP TOW](#)
[6K Sonar DEEP TOW](#)
[KM-ROV](#)
[POWER GRAB SAMPLER \(SHELL\)](#)
[POWER GRAB SAMPLER \(CLOW\)](#)
[BMS](#)

Go to a Cruise Information

Cruise ID:

Go to a Dive Information

Dive ID: