

## MIRAI MR11-02 Marine Meteorology

Last Modified: 2014-08-08

**ReadMe** Observation Data Data Format

Cruise ID: **MR11-02**

Marine Meteorology: Processed (DMO)-Corrected

Data Policy: **JAMSTEC**

**Observation Items:** Atmospheric pressure, Air temperature, Dew point temperature, Relative humidity, Sea surface temperature, Zonal and meridional wind component, Precipitation, Shortwave radiation, Longwave radiation

**Science Keywords:**

ATMOSPHERE > ATMOSPHERIC PRESSURE > SEA LEVEL PRESSURE  
ATMOSPHERE > ATMOSPHERIC RADIATION > LONGWAVE RADIATION  
ATMOSPHERE > ATMOSPHERIC RADIATION > SHORTWAVE RADIATION  
ATMOSPHERE > ATMOSPHERIC TEMPERATURE > AIR TEMPERATURE  
ATMOSPHERE > ATMOSPHERIC WATER VAPOR > DEW POINT TEMPERATURE  
ATMOSPHERE > ATMOSPHERIC WATER VAPOR > HUMIDITY  
ATMOSPHERE > PRECIPITATION  
OCEANS > OCEAN TEMPERATURE > SEA SURFACE TEMPERATURE  
OCEANS > OCEAN WAVES > SIGNIFICANT WAVE HEIGHT  
OCEANS > OCEAN WINDS > SURFACE WINDS

**Cruise Report**

[http://www.godac.jamstec.go.jp/catalog/data/doc\\_catalog/media/MR11-02\\_all.pdf](http://www.godac.jamstec.go.jp/catalog/data/doc_catalog/media/MR11-02_all.pdf)

### For Using Data

**Principal Investigator**

Data Management Office

**Use Constraints**

See [Terms and Conditions](#) about constrain of use.

**Data Citation**

See [Terms and Conditions](#) about data citation.

**Period (UTC)**

2011-02-11 00:10 – 2011-03-09 02:50

**Instrument**

Instrument:

General maritime meteorological observation system

Instrument:

SOAR (Shipboard Oceanographic and Atmospheric Radiation) ( - MR20-01)



**Overview**

"MIRAI meteorological integrated dataset" is a set of "suitably composed data" which consists of 10-minute-average corrected Atmospheric Pressure, Air Temperature, Relative Humidity, Wind Direction and Speed, Precipitation, Radiation, Sea Surface Temperature, and Wave Height observed by R/V MIRAI. The correction and processing method was produced by Dr. K. Yoneyama (IORGC/JAMSTEC) in cooperation with DMO. The actual data processing was conducted by DMO. See [here](#) for detailed correction and processing method.

**Specifications**

Sensors	Type	Manufacturer	Location (from sea surface)
Anemometer	05106	R.M. Young, USA	Foremast (25m)
Tair/RH	HMP45A	Vaisala, Finland with 43408 Gill aspirated radiation shield R.M. Young, USA	Starboard and port side at compass deck (21m)
Thermometer (SST)	SBE 3S	Sea-Bird Electronics, USA	Bow thruster room (-4.5m)
Barometer	Model-370	Setra System, USA	Weather observation room at captain deck (13m)
Rain guage	50202	R.M. Young, USA	Foremast (24m)
Radiometer (shortwave)	PSP	Eppley, USA	Foremast (25m)
Radiometer (long-wave)	PIR	Eppley, USA	Foremast (25m)
Wave height meter	WM-2	Tsurumi-Seiki, Japan	Bow (10m)

**Sensors information**

Tair/RH sensor calibration date

Starboard side : 2010-11-08

Port side : 2010-11-08

Rain guage calibration (Using the revision of rain data)

Minimum value (0.0 cc) : 0.90 mm

Maximum value (505.0 cc) : 51.08 mm

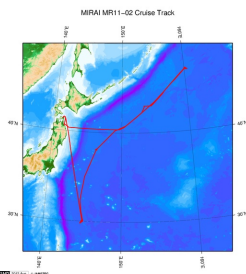
Date : 2011-02-06

**Need raw data?**

If you would like the raw data set, please contact us from "Contact Us" above.

**Note**

**Related Information**



[Enlarge Image](#)

#### MR11-02

Ship Name: MIRAI  
Period: 2011-02-11 - 2011-03-09  
Chief Scientist: Makio Honda (JAMSTEC)  
Project Name: [Station K2, Station S1, Station KEO]  
Proposal ▶ Studies on the microbial-geochemical processes that regulate the operation of the biological pump in the subarctic and subtropical regions of the western North Pacific  
Title:

#### Update History

2014-08-08	An observation data was registered.
2012-09-28	An observation data was registered.

JAMSTEC  
Site Policy  
Privacy Policy  
Application for Data and Samples  
Data Policy  
What's New  
Update History  
Feeds

Lists  
Publication List  
Amount of Public Info.

Data  
Map Search  
Data Tree  
Detailed Search

Information of the Ships  
NATSUSHIMA  
KAIYO  
YOKOSUKA  
MIRAI  
KAIREI  
CHIKYU  
KAIMEI  
SHINSEI MARU  
HAKUHO MARU

Information of the Submersibles  
KAIKO  
SHINKAI 2000  
SHINKAI 6500  
DEEP TOW  
HYPER-DOLPHIN  
URASHIMA  
YOKOSUKA DEEP TOW  
6K Camera DEEP TOW  
6K Sonar DEEP TOW  
KM-ROV  
POWER GRAB  
SAMPLER (SHELL)  
POWER GRAB  
SAMPLER (CLOW)  
BMS

#### Go to a Cruise Information

Cruise ID:

#### Go to a Dive Information

Dive ID:

Copyright 2011 Japan Agency for Marine-Earth Science and Technology

**JAMSTEC** 国立研究開発法人 海洋研究開発機構  
JAPAN AGENCY FOR MARINE-EARTH SCIENCE AND TECHNOLOGY

## MIRAI MR11-02 Marine Meteorology

Last Modified: 2014-08-08

[ReadMe](#) [Observation Data](#) [Data Format](#)

Cruise ID: [MR11-02](#)

Marine Meteorology: Processed (DMO)-Corrected

Data Policy: [JAMSTEC](#)

### Meteorology Corrected

Single space separated.

No.	Column	Content	Unit	format (nodata or baddata)	Remarks
1	1-12	Date and time [YYYYMMDDhhmm]		i12	Every 10 minutes* * Time stamp is set at the end of average
2	14-21	Julian day [DDD.DDDD]		f8.4	Every 10 minutes*
3	23-29	Longitude [0 to 360]	degree	f7.3 (999.999)	Location at time stamp East longitude
4	31-37	Latitude [-90 to 90]	degree	f7.3 (999.999)	Location at time stamp +: North latitude -: South latitude
5	39-44	Atmospheric pressure	hPa	f6.1 (9999.9)	10-minute mean*
6	46-50	Air temperature	deg-C	f5.1 (999.9)	10-minute mean* Data is selected on the windward side
7	52-56	Dewpoint temperature	deg-C	f5.1 (999.9)	10-minute mean* Calculated from 'Air temperature' and 'Relative humidity' using WMO's Formula(**) for liquid water ** WMO-No.8 (Guide to Meteorological Instruments and Methods of Observation)
8	58-62	Relative humidity	%	f5.1 (999.9)	10-minute mean* Data is selected on the windward side
9	64-70	Sea surface temperature (SST)	deg-C	f7.4 (99.9999)	10-minute mean* From EPCS/TSG
10	72-76	Wind speed (zonal)	m/sec	f5.1 (999.9)	10-minute mean* No anemometer height adjustment
11	78-82	Wind speed (meridional)	m/sec	f5.1 (999.9)	10-minute mean* No anemometer height adjustment
12	84-89	Rainfall intensity	mm/hr	f6.2 (999.99)	10-minute mean*
13	91-96	Short wave radiation	W/m2	f6.1 (9999.9)	10-minute mean*
14	98-102	Long wave radiation	W/m2	f5.1 (999.9)	10-minute mean*
15	104-108	Significant wave height	m	f5.2 (99.99)	Calculated every an hour Calculated every 3 hours, before March 2003
16	110-114	Wave period	second	f5.2 (99.99)	Calculated every an hour Calculated every 3 hours, before March 2003

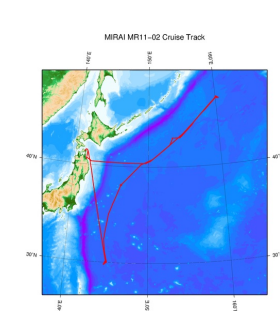
### Data Example

```

YYYYMMDDhhmm DDD.DDDD Lon Lat Press AT DT RH SST WindU WindV Rain SWR LWR WH WP
200611290000 333.0000 77.314 2.715 1009.2 27.6 23.7 79.2 28.8732 -2.5 -1.6 0.00 0.0 388.1 0.94 7.69
200611290010 333.0070 77.346 2.703 1009.3 27.6 23.7 79.3 28.8931 -2.3 -1.1 0.00 0.0 388.3 0.96 7.92
200611290020 333.0139 77.378 2.692 1009.5 27.6 23.8 79.8 28.8957 -2.0 -0.5 0.00 0.0 387.7 0.96 7.92
200611290030 333.0208 77.410 2.681 1009.6 27.6 23.7 79.1 28.9206 -2.3 -1.0 0.00 0.0 388.0 0.96 7.92
200611290040 333.0278 77.442 2.670 1009.7 27.7 23.6 78.6 28.9477 -2.4 -0.7 0.00 0.0 386.7 0.96 7.92
200611290050 333.0347 77.474 2.658 1009.9 27.7 23.8 79.3 28.9166 -2.7 -1.2 0.00 2.4 390.7 0.96 7.92
200611290100 333.0417 77.506 2.647 1010.1 27.7 23.7 79.1 28.8948 -3.0 -1.5 0.00 12.6 390.8 0.96 7.92

```

### Related Information



[Enlarge Image](#)

#### MR11-02

Ship Name: MIRAI

Period: 2011-02-11 - 2011-03-09

Chief Scientist: Makio Honda (JAMSTEC)

Project Name: [Station K2, Station S1, Station KEO]

Proposal [►](#) Studies on the microbial-geochemical processes that regulate the operation of the biological pump in the subarctic and subtropical regions of the western North Pacific

### Update History

2014-08-08	An observation data was registerd.
2012-09-28	An observation data was registerd.

# JAMSTEC

Site Policy  
Privacy Policy  
Application for Data and Samples  
Data Policy  
**What's New**  
Update History  
Feeds

**Lists**  
Publication List  
Amount of Public Info.  
**Data**  
Map Search  
Data Tree  
Detailed Search

**Information of the Ships**  
NATSUSHIMA  
KAIYO  
YOKOSUKA  
MIRAI  
KAIREI  
CHIKYU  
KAIMEI  
SHINSEI MARU  
HAKUHO MARU

**Information of the Submersibles**  
KAIKO  
SHINKAI 2000  
SHINKAI 6500  
DEEP TOW  
HYPER-DOLPHIN  
URASHIMA  
YOKOSUKA DEEP TOW  
6K Camera DEEP TOW  
6K Sonar DEEP TOW  
KM-ROV  
POWER GRAB SAMPLER (SHELL)  
POWER GRAB SAMPLER (CLOW)  
BMS

## Go to a Cruise Information

Cruise ID:

## Go to a Dive Information

Dive ID:

Copyright 2011 Japan Agency for Marine-Earth Science and Technology



## MIRAI MR11-02 Marine Meteorology

Last Modified: 2014-08-08

[ReadMe](#) [Observation Data](#) [Data Format](#)

Cruise ID: **MR11-02**

Marine Meteorology: Processed (DMO)-Corrected

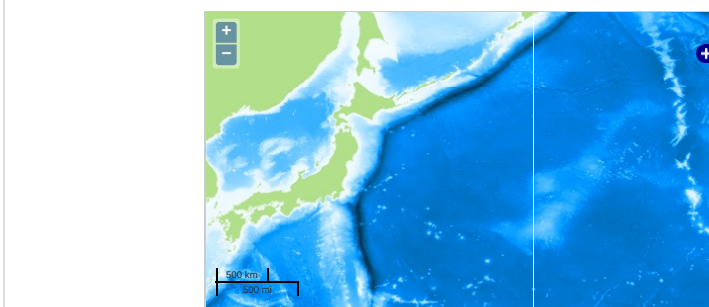
Data Policy: **JAMSTEC**

**Observation Items:** Atmospheric pressure, Air temperature, Dew point temperature, Relative humidity, Sea surface temperature, Zonal and meridional wind component, Precipitation, Shortwave radiation, Longwave radiation

**Science Keywords:**

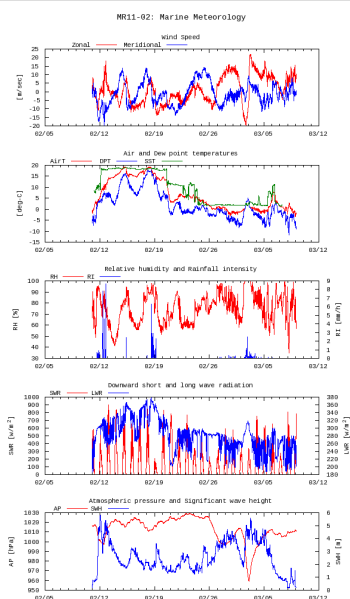
ATMOSPHERE	> ATMOSPHERIC PRESSURE	> SEA LEVEL PRESSURE
ATMOSPHERE	> ATMOSPHERIC RADIATION	> LONGWAVE RADIATION
ATMOSPHERE	> ATMOSPHERIC RADIATION	> SHORTWAVE RADIATION
ATMOSPHERE	> ATMOSPHERIC TEMPERATURE	> AIR TEMPERATURE
ATMOSPHERE	> ATMOSPHERIC WATER VAPOR	> DEW POINT TEMPERATURE
ATMOSPHERE	> ATMOSPHERIC WATER VAPOR	> HUMIDITY
ATMOSPHERE	> PRECIPITATION	
OCEANS	> OCEAN TEMPERATURE	> SEA SURFACE TEMPERATURE
OCEANS	> OCEAN WAVES	> SIGNIFICANT WAVE HEIGHT
OCEANS	> OCEAN WINDS	> SURFACE WINDS

### Observation Map



... Observation Line    ... Navigation    ... Observation, Dive Point, Hole

### Figures



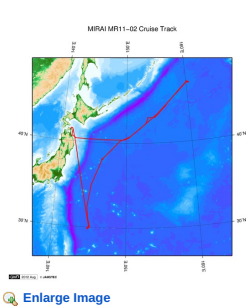
### Data List

[Add to Basket](#)

File names

☐ MR11-02.dat

### Related Information



[Enlarge Image](#)

#### MR11-02

Ship Name: MIRAI  
Period: 2011-02-11 - 2011-03-09  
Chief Scientist: Makio Honda (JAMSTEC)  
Project Name: [Station K2, Station S1, Station KEO]  
Proposal Title: Studies on the microbial-geochemical processes that regulate the operation of the biological pump in the subarctic and subtropical regions of the western North Pacific

#### Update History

2014-08-08	An observation data was registered.
2012-09-28	An observation data was registered.

#### JAMSTEC

[Site Policy](#)  
[Privacy Policy](#)

[Application for Data and Samples](#)  
[Data Policy](#)

#### What's New

[Update History](#)  
[Feeds](#)

#### Lists

[Publication List](#)  
[Amount of Public Info.](#)

#### Data

[Map Search](#)  
[Data Tree](#)  
[Detailed Search](#)

#### Information of the Ships

NATSUSHIMA  
KAIYO  
YOKOSUKA  
MIRAI  
KAIREI  
CHIKYU  
KAIMEI  
SHINSEI MARU  
HAKUHO MARU

#### Information of the Submersibles

KAIKO  
SHINKAI 2000  
SHINKAI 6500  
DEEP TOW  
HYPER-DOLPHIN  
URASHIMA  
YOKOSUKA DEEP TOW  
6K Camera DEEP TOW  
6K Sonar DEEP TOW  
KM-ROV  
POWER GRAB SAMPLER (SHELL)  
POWER GRAB SAMPLER (CLOW)  
BMS

#### Go to a Cruise Information

Cruise ID:

#### Go to a Dive Information

Dive ID:

Copyright 2011 Japan Agency for Marine-Earth Science and Technology

