

MIRAI MR11-08 Leg3 Shipboard Acoustic Doppler Current Profiler (ADCP)

Last Modified: 2017-04-11

[ReadMe](#) [Observation Data](#)

Cruise ID: [MR11-08 Leg3](#)

Shipboard Acoustic Doppler Current Profiler (ADCP): Processed (PI)

Data Policy: [JAMSTEC](#)

Observation Items: Depth, Absolute velocity (zonal, meridional and vertical)

Science Keywords:

OCEANS > OCEAN CIRCULATION > OCEAN CURRENTS

Cruise Report

http://www.godac.jamstec.go.jp/catalog/data/doc_catalog/media/MR11-08_leg1-3_all.pdf

For Using Data

Principal Investigator

Shinya Koketsu (JAMSTEC)

Use Constraints

See [Terms and Conditions](#) about constrain of use.

Data Citation

See [Terms and Conditions](#) about data citation.

Period (UTC)

2012-01-13 02:45 – 2012-02-08 06:15

Instrument

Instrument:

Shipboard acoustic doppler current
profiler (ADCP) (MR08-02 -)



Overview

Please see the [Data book](#) for details of data.

Velocity data with ADCP

Files:

formatted.txt Velocity profile (10 min. average)

File Format:

Year/Month/Day Hour/Minutes Time_Zone Degree_Longitude Minutes_Longitude Degree_Latitude Minutes_Latitude
Depth(m) U(m/s) V(m/s) Error(m/s)

```
. . . .
. . . .
. . . .
. . . .
. . . .
```

Cruise_Code : cruise code

Section_Code: section code

Station_Code: station code

Cast_Code: cast code

Year/Month/Day Hour/Minutes Time_Zone: The mean time for the ensemble

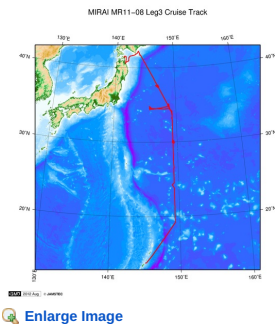
Degree_Latitude Minutes_Latitude [N/S]: The mean latitude

Degree_Longitude Minutes_Longitude [E/W]: The mean longitude

Contact:

Shinya Kouketsu (skouketsu@jamstec.go.jp)

Related Information



MR11-08 Leg3

Ship Name: MIRAI

Period: 2012-01-12 - 2012-02-09

Chief Scientist: Yuichiro Kumamoto (JAMSTEC)

Project Name: [POST-WOCE Hydrography]

Update History

| | |
|------------|------------------------------------|
| 2017-04-11 | An observation data was registerd. |
| 2014-04-30 | An observation data was registerd. |
| 2013-02-15 | An observation data was registerd. |

JAMSTEC

Site Policy
Privacy Policy
Application for Data and Samples
Data Policy

What's New
Update History
Feeds

Lists

Publication List
Amount of Public Info.

Data

Map Search
Data Tree
Detailed Search

Information of the Ships

NATSUSHIMA
KAIYO
YOKOSUKA
MIRAI
KAIREI
CHIKYU
KAIMEI
SHINSEI MARU
HAKUHO MARU

Information of the Submersibles

KAIKO
SHINKAI 2000
SHINKAI 6500
DEEP TOW
HYPER-DOLPHIN
URASHIMA
YOKOSUKA DEEP TOW
6K Camera DEEP TOW
6K Sonar DEEP TOW
KM-ROV
POWER GRAB SAMPLER (SHELL)
POWER GRAB SAMPLER (CLOW)
BMS

Go to a Cruise Information

Cruise ID:

Go to a Dive Information

Dive ID:

Copyright 2011 Japan Agency for Marine-Earth Science and Technology



JAMSTEC 国立研究開発法人
海洋研究開発機構
JAPAN AGENCY FOR MARINE-EARTH SCIENCE AND TECHNOLOGY

MIRAI MR11-08 Leg3 Shipboard Acoustic Doppler Current Profiler (ADCP)

Last Modified: 2017-04-11

[ReadMe](#)

[Observation
Data](#)

Cruise ID: [MR11-08 Leg3](#)

Shipboard Acoustic Doppler Current Profiler (ADCP) Processed (PI)

Data Policy: [JAMSTEC](#)

Observation Items: Depth, Absolute velocity (zonal, meridional and vertical)

Science Keywords:

OCEANS > OCEAN CIRCULATION > OCEAN
CURRENTS

Cruise Report

http://www.godac.jamstec.go.jp/catalog/data/doc_catalog/media/MR11-08_leg1-3_all.pdf

[For Using Data](#)

Principal Investigator

Shinya Koketsu (JAMSTEC)

Use Constraints

See [Terms and Conditions](#) about constrain of use.

Data Citation

See [Terms and Conditions](#) about data citation.

Period (UTC)

2012-01-13 02:45 – 2012-02-08 06:15

Instrument

Instrument:

Shipboard acoustic doppler current

profiler (ADCP) (MR08-02 -)



Overview

Please see the [Data book](#) for details of data.

Velocity data with ADCP

Files:

formatted.txt Velocity profile (10 min. average)

File Format:

Year/Month/Day Hour/Minutes Time_Zone Degree_Longitude Minites_Longitude Degree_Latitude Minites_Latitude
Depth(m) U(m/s) V(m/s) Error(m/s)

```
. . . .
. . . .
. . . .
. . . .
. . . .
```

Cruise_Code : cruise code

Section_Code: section code

Station_Code: station code

Cast_Code: cast code

Year/Month/Day Hour/Minutes Time_Zone: The mean time for the ensemble

Degree_Latitude Minites_Latitude [N/S]: The mean latitude

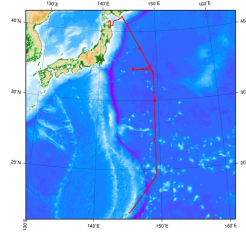
Degree_Longitude Minites_Longitude [E/W]: The mean longitude


Contact:

Shinya Kouketsu (skouketsu@jamstec.go.jp)

Related Information

MR11-08 Leg3 Cruise Track



 [Enlarge Image](#)

MR11-08 Leg3

Ship Name: MIRAI

Period: 2012-01-12 - 2012-02-09

Chief Scientist: Yuichiro Kumamoto (JAMSTEC)

Project Name: [POST-WOCE Hydrography]

| Update History | |
|----------------|------------------------------------|
| 2017-04-11 | An observation data was registerd. |
| 2014-04-30 | An observation data was registerd. |
| 2013-02-15 | An observation data was registerd. |

JAMSTEC

Site Policy

Privacy Policy

Application for Data and Samples

Data Policy

What's New

Update History

Feeds

Lists

Publication List

Amount of Public Info.

Data

Map Search

Data Tree

Detailed Search

Information of the Ships

NATSUSHIMA

KAIYO

YOKOSUKA

MIRAI

KAIREI

CHIKYU

KAI MEI

SHINSEI MARU

HAKUHO MARU

Information of the Submersibles

KAIKO

SHINKAI 2000

SHINKAI 6500

DEEP TOW

HYPER-DOLPHIN

URASHIMA

YOKOSUKA DEEP TOW

6K Camera DEEP TOW

6K Sonar DEEP TOW

KM-ROV

POWER GRAB SAMPLER (SHELL)

POWER GRAB SAMPLER (CLOW)

BMS

Go to a Cruise Information

Cruise ID:

Go

Go to a Dive Information

Dive ID:

Go

 **JAMSTEC** 国立研究開発法人
海洋研究開発機構
JAPAN AGENCY FOR MARINE-EARTH SCIENCE AND TECHNOLOGY

Copyright 2011 Japan Agency for Marine-Earth Science and Technology

MIRAI MR11-08 Leg3 Shipboard Acoustic Doppler Current Profiler (ADCP)

Last Modified: 2017-04-11

[ReadMe](#) [Observation Data](#)

Cruise ID: [MR11-08 Leg3](#)

Shipboard Acoustic Doppler Current Profiler (ADCP): Processed (PI)

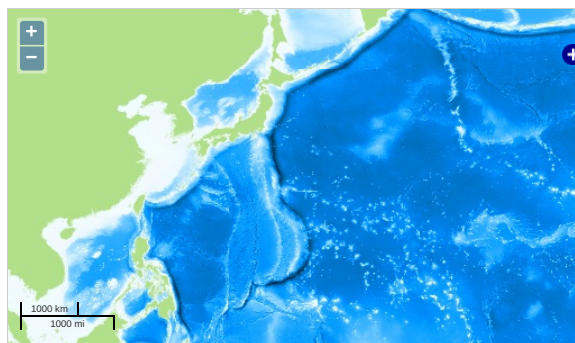
Data Policy: [JAMSTEC](#)

Observation Items: Depth, Absolute velocity (zonal, meridional and vertical)

Science Keywords:

OCEANS > OCEAN CIRCULATION > OCEAN CURRENTS

Observation Map



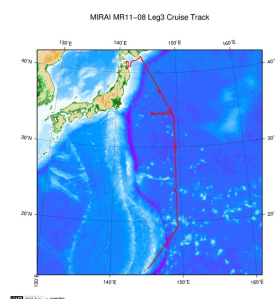
... Observation Line ... Navigation ... Observation, Dive Point, Hole

Data List

File names

☐ MR11-08_adcp.txt

Related Information



[Enlarge Image](#)

MR11-08 Leg3

Ship Name: MIRAI
Period: 2012-01-12 - 2012-02-09
Chief Scientist: Yuichiro Kumamoto (JAMSTEC)
Project Name: [POST-WOCE Hydrography]

Update History

| | |
|------------|-------------------------------------|
| 2017-04-11 | An observation data was registered. |
| 2014-04-30 | An observation data was registered. |
| 2013-02-15 | An observation data was registered. |

JAMSTEC
[Site Policy](#)
[Privacy Policy](#)
[Application for Data and Samples](#)
[Data Policy](#)

[What's New](#)
[Update History](#)
[Feeds](#)

[Lists](#)
[Publication List](#)
[Amount of Public Info.](#)

[Data](#)
[Map Search](#)
[Data Tree](#)
[Detailed Search](#)

[Information of the Ships](#)
NATSUSHIMA
KAIYO
YOKOSUKA
MIRAI
KAIREI
CHIKYU
KAIMEI
SHINSEI MARU
HAKUHO MARU

[Information of the Submersibles](#)
KAIKO
SHINKAI 2000
SHINKAI 6500
DEEP TOW
HYPER-DOLPHIN
URASHIMA
YOKOSUKA DEEP TOW
6K Camera DEEP TOW
6K Sonar DEEP TOW
KM-ROV
POWER GRAB SAMPLER (SHELL)
POWER GRAB SAMPLER (CLOW)
BMS

[Go to a Cruise Information](#)

Cruise ID:

[Go to a Dive Information](#)

Dive ID: