

## MIRAI MR14-04 Leg1 Expendable Conductivity-Temperature-Depth Profiler (XCTD)

Last Modified: 2015-06-30

[ReadMe](#) [Observation Data](#) [Data Format](#)

Cruise ID: [MR14-04 Leg1](#)

Expendable Conductivity-Temperature-Depth Profiler (XCTD): Processed (PI)

Data Policy: [JAMSTEC](#)

Observation Items: Depth, Temperature, Salinity

Science Keywords:

OCEANS > OCEAN TEMPERATURE > WATER TEMPERATURE

OCEANS > SALINITY/DENSITY > SALINITY

Cruise Report

[http://www.godac.jamstec.go.jp/catalog/data/doc\\_catalog/media/MR14-04\\_leg1-2\\_all.pdf](http://www.godac.jamstec.go.jp/catalog/data/doc_catalog/media/MR14-04_leg1-2_all.pdf)

### For Using Data

**Principal Investigator**

Data Management Office

**Use Constraints**

See [Terms and Conditions](#) about constrain of use.

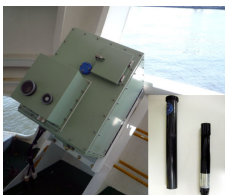
**Data Citation**

See [Terms and Conditions](#) about data citation.

### Instrument

Instrument:

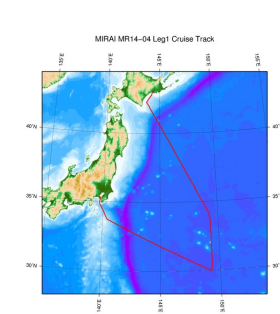
Expendable conductivity temperature  
depth measurements (XCTD) (MR11-  
04 - )



### Overview

Please see the [Cruise report](#) for details of data.

### Related Information



[Enlarge Image](#)

#### MR14-04 Leg1

Ship Name: MIRAI

Period: 2014-07-08 - 2014-07-15

Chief Scientist: Hiroshi Uchida (JAMSTEC)

Project Name: [POST-WOCE Hydrography]

Proposal ▶ Collaborative study on the zonal distribution of dissolved organic carbon in the far North Pacific

Title: Pacific

### Update History

Update Date	Update Content
2015-06-30	An observation data was registered.

#### JAMSTEC

[Site Policy](#)  
[Privacy Policy](#)  
[Application for Data and Samples](#)  
[Data Policy](#)

**What's New**  
[Update History](#)  
[Feeds](#)

#### Lists

[Publication List](#)  
[Amount of Public Info.](#)

#### Data

[Map Search](#)  
[Data Tree](#)  
[Detailed Search](#)

#### Information of the Ships

NATSUSHIMA  
KAIYO  
YOKOSUKA  
MIRAI  
KAIREI  
CHIKYU  
KAIMEI  
SHINSEI MARU  
HAKUHO MARU

#### Information of the Submersibles

KAIKO  
SHINKAI 2000  
SHINKAI 6500  
DEEP TOW  
HYPER-DOLPHIN  
URASHIMA  
YOKOSUKA DEEP TOW  
6K Camera DEEP TOW  
6K Sonar DEEP TOW  
KM-ROV  
POWER GRAB SAMPLER (SHELL)  
POWER GRAB SAMPLER (CLOW)  
BMS

#### Go to a Cruise Information

Cruise ID:

#### Go to a Dive Information

Dive ID:

## MIRAI MR14-04 Leg1 Expendable Conductivity-Temperature-Depth Profiler (XCTD)

Last Modified: 2015-06-30

[ReadMe](#) [Observation Data](#) [Data Format](#)

Cruise ID: [MR14-04 Leg1](#)

Expendable Conductivity-Temperature-Depth Profiler (XCTD): Processed (PI)

Data Policy: [JAMSTEC](#)

### XCTD WOCE-type1

#### Format Description for the Processed (PI) Data

Provided in the Exchange Format of CCHDO (CLIVAR and Carbon Hydrographic Data Office). Please see the following link for details of Exchange Format.

[CCHDO | CLIVAR & Carbon Hydrographic Data Office](#)

Data in following cruise is not expressed with Exchange Format. Please see the site of each cruise for format.

MR02-K05 Leg1

MR04-05

#### Format Description for the QCed Data

Each data file contains one line header (meta data) followed by data lines for each cast.

The number of data lines are recorded in the header.

Header part

No.	Column	Content	Format	Remarks
1	1	Header ID	a1	fixed as '#'
2	3 - 6	Data ID	a4	XCTD
3	8 - 22	Cruise ID	a15	
4	33 - 40	Date	i8	YYYYMMDD (UTC)
5	42 - 45	Time	i4	hhmm (UTC)
6	47 - 55	Latitude	i2,a1,f5.2,a1	dd-mm.mmN(S)
7	57 - 66	Longitude	i3,a1,f5.2,a1	ddd-mm.mmE(W)
8	68 - 71	Number of data lines	i4	
9	72 - 73	Terminator	-	CR+LF

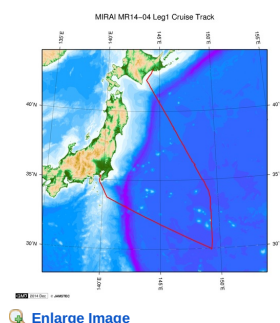
Data part

No.	Column	Content	Unit	Format	Remarks
1	1 - 11	Depth	dbar	f11.1	
2	12 - 22	Temperature	deg-C	f11.2	ITS-90
3	23 - 33	Salinity	PSU	f11.3	PSS-78
4	45 - 55	Flag	-	i11	1 - 7 : space 8 : flag of depth 9 : flag of temperature 10 : flag of salinity 11 : space * reference : <a href="#">Definition of Quality Control Flags</a>
5	56 - 57	Terminator	-	-	CR+LF

Each contents of the data part is stored in 11 bytes.

Missing value is presented by '-5', and error value is presented by '-9'.

### Related Information



#### MR14-04 Leg1

Ship Name: MIRAI

Period: 2014-07-08 - 2014-07-15

Chief Scientist: Hiroshi Uchida (JAMSTEC)

Project Name: [POST-WOCE Hydrography]

Proposal [▶](#) Collaborative study on the zonal distribution of dissolved organic carbon in the far North Pacific

Title:

[Enlarge Image](#)

### Update History

2015-06-30 An observation data was registered.

JAMSTEC  
Site Policy  
Privacy Policy  
Application for Data and Samples  
Data Policy

What's New  
Update History  
Feeds

Lists  
Publication List  
Amount of Public Info.

Data  
Map Search  
Data Tree  
Detailed Search

#### Information of the Ships

NATSUSHIMA  
KAIYO  
YOKOSUKA  
MIRAI  
KAIREI  
CHIKYU  
KAIMEI  
SHINSEI MARU  
HAKUHO MARU

#### Information of the Submersibles

KAIKO  
SHINKAI 2000  
SHINKAI 6500  
DEEP TOW  
HYPER-DOLPHIN  
URASHIMA  
YOKOSUKA DEEP TOW  
6K Camera DEEP TOW  
6K Sonar DEEP TOW  
KM-ROV  
POWER GRAB SAMPLER

#### Go to a Cruise Information

Cruise ID:

#### Go to a Dive Information

Dive ID:

(SHELL)  
POWER GRAB SAMPLER  
(CLOW)  
BMS

Copyright 2011 Japan Agency for Marine-Earth Science and  
Technology



**JAMSTEC** 国立研究開発法人  
海洋研究開発機構  
JAPAN AGENCY FOR MARINE-EARTH SCIENCE AND TECHNOLOGY

MIRAI MR14-04 Leg1 Expendable Conductivity-Temperature-Depth Profiler (XCTD)

Last Modified: 2015-06-30

ReadMe

Observation Data

Data Format

Cruise ID: [MR14-04 Leg1](#)  
Expendable Conductivity-Temperature-Depth Profiler (XCTD): Processed (PI)  
Data Policy: [JAMSTEC](#)  
Observation Items: Depth, Temperature, Salinity  
Science Keywords:  

OCEANS > OCEAN

OCEANS > TEMPERATURE

OCEANS > SALINITY/DENSITY

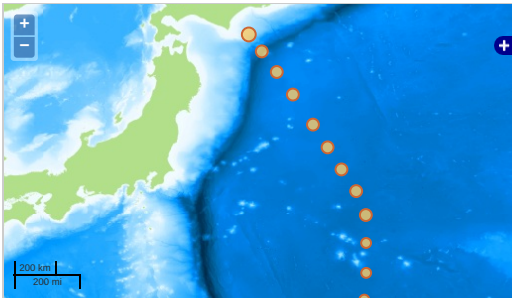
> WATER

TEMPERATURE

> SALINITY

Observation Map

1. Clicking the icon displays a balloon with observation information.



...

 Observation Line

...

 Navigation

...

 Observation, Dive Point, Hole

Imagery reproduced from ...

Data List

Add to Basket

File names

P10N\_00001\_00001\_xc1.csv

P10N\_00002\_00001\_xc1.csv

P10N\_00003\_00001\_xc1.csv

P10N\_00004\_00001\_xc1.csv

P10N\_00005\_00001\_xc1.csv

P10N\_00006\_00001\_xc1.csv

P10N\_00007\_00001\_xc1.csv

P10N\_00008\_00001\_xc1.csv

P10N\_00009\_00001\_xc1.csv

P10N\_00010\_00001\_xc1.csv

P10N\_00011\_00001\_xc1.csv

P10N\_00012\_00001\_xc1.csv

P10N\_00013\_00001\_xc1.csv

P10N\_00014\_00001\_xc1.csv

P10N\_00015\_00001\_xc1.csv

P10N\_00016\_00001\_xc1.csv

P10N\_00017\_00001\_xc1.csv

P10N\_00018\_00001\_xc1.csv

P10N\_00019\_00001\_xc1.csv

P10N\_00020\_00001\_xc1.csv

P10N\_00021\_00001\_xc1.csv

P10N\_00023\_00001\_xc1.csv

P10N\_00024\_00001\_xc1.csv

P10N\_00025\_00001\_xc1.csv

P10N\_00026\_00001\_xc1.csv

P10N\_00027\_00001\_xc1.csv

P10N\_00028\_00001\_xc1.csv

P10N\_00029\_00001\_xc1.csv

P10N\_00030\_00001\_xc1.csv

P10N\_00031\_00001\_xc1.csv

P10N\_00032\_00001\_xc1.csv

P10N\_00033\_00001\_xc1.csv

P10N\_00034\_00001\_xc1.csv

P10N\_00035\_00001\_xc1.csv

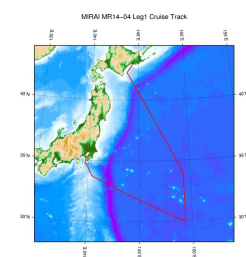
Observation List

The list of observation is shown as follows.

Observation	Time and Date	Lat. [°]	Lon. [°]
P10N_00001_00001_xc1	2014-07-10 23:39	29.9803	149.2550
P10N_00002_00001_xc1	2014-07-11 12:04	30.5015	149.3357
P10N_00003_00001_xc1	2014-07-11 15:36	31.1672	149.3370
P10N_00004_00001_xc1	2014-07-11 19:02	31.8328	149.3273
P10N_00005_00001_xc1	2014-07-11 22:34	32.4953	149.3343
P10N_00006_00001_xc1	2014-07-12 02:20	33.1545	149.3287
P10N_00007_00001_xc1	2014-07-12 05:52	33.7350	149.3225
P10N_00008_00001_xc1	2014-07-12 09:43	34.1670	149.2172
P10N_00009_00001_xc1	2014-07-12 11:38	34.4970	149.0223
P10N_00010_00001_xc1	2014-07-12 12:22	34.7873	148.8020

P10N_00010_00001_xc1	2014-07-12 15:43	39.1744	148.8330
Observation	Time and Date	Lat. [°]	Lon. [°]
P10N_00011_00001_xc1	2014-07-12 15:18	35.0848	148.6603
P10N_00012_00001_xc1	2014-07-12 17:22	35.4198	148.4535
P10N_00013_00001_xc1	2014-07-12 19:26	35.7593	148.2407
P10N_00014_00001_xc1	2014-07-12 21:39	36.0803	148.0637
P10N_00015_00001_xc1	2014-07-13 01:50	36.4192	147.8365
P10N_00016_00001_xc1	2014-07-13 03:56	36.7392	147.6247
P10N_00017_00001_xc1	2014-07-13 05:50	37.0770	147.4140
P10N_00018_00001_xc1	2014-07-13 07:46	37.4167	147.1935
P10N_00019_00001_xc1	2014-07-13 09:40	37.7487	146.9752
P10N_00020_00001_xc1	2014-07-13 11:40	38.0702	146.7432
P10N_00021_00001_xc1	2014-07-13 13:34	38.4138	146.5375
P10N_00023_00001_xc1	2014-07-13 22:33	39.0828	146.0825
P10N_00024_00001_xc1	2014-07-14 00:39	39.4158	145.8453
P10N_00025_00001_xc1	2014-07-14 02:42	39.7520	145.6120
P10N_00026_00001_xc1	2014-07-14 04:41	40.0848	145.3690
P10N_00027_00001_xc1	2014-07-14 06:41	40.4150	145.1350
P10N_00028_00001_xc1	2014-07-14 08:37	40.7530	144.8870
P10N_00029_00001_xc1	2014-07-14 10:07	40.9987	144.7025
P10N_00030_00001_xc1	2014-07-14 12:02	41.2470	144.5090
P10N_00031_00001_xc1	2014-07-14 15:03	41.4995	144.3202
P10N_00032_00001_xc1	2014-07-14 16:40	41.7507	144.1265
P10N_00033_00001_xc1	2014-07-14 18:10	42.0028	143.9607
P10N_00034_00001_xc1	2014-07-14 19:11	42.1675	143.8087
P10N_00035_00001_xc1	2014-07-14 19:44	42.2532	143.7400

#### Related Information



[Enlarge Image](#)

#### MR14-04 Leg1

Ship Name: MIRAI  
Period: 2014-07-08 - 2014-07-15  
Chief Scientist: Hiroshi Uchida (JAMSTEC)  
Project Name: [POST-WOCE Hydrography]  
Proposal ▶ Collaborative study on the zonal distribution of dissolved organic carbon in the far North  
Title: Pacific

#### Update History

2015-06-30 An observation data was registerd.

#### JAMSTEC

[Site Policy](#)  
[Privacy Policy](#)  
[Application for Data and Samples](#)  
[Data Policy](#)  
[What's New](#)  
[Update History](#)  
[Feeds](#)

[Lists](#)  
[Publication List](#)  
[Amount of Public Info.](#)  
**Data**  
[Map Search](#)  
[Data Tree](#)  
[Detailed Search](#)

#### Information of the Ships

[NATSUSHIMA](#)  
[KAIYO](#)  
[YOKOSUKA](#)  
[MIRAI](#)  
[KAIREI](#)  
[CHIKYU](#)  
[KAIMEI](#)  
[SHINSEI MARU](#)  
[HAKUHO MARU](#)

#### Information of the Submersibles

[KAIKO](#)  
[SHINKAI 2000](#)  
[SHINKAI 6500](#)  
[DEEP TOW](#)  
[HYPER-DOLPHIN](#)  
[URASHIMA](#)  
[YOKOSUKA DEEP TOW](#)  
[6K Camera DEEP TOW](#)  
[6K Sonar DEEP TOW](#)  
[KM-ROV](#)  
[POWER GRAB SAMPLER \(SHELL\)](#)  
[POWER GRAB SAMPLER \(CLOW\)](#)  
[BMS](#)

#### Go to a Cruise Information

Cruise ID:

#### Go to a Dive Information

Dive ID:

Copyright 2011 Japan Agency for Marine-Earth Science and Technology



**JAMSTEC** 国立研究開発法人  
海洋研究開発機構  
JAPAN AGENCY FOR MARINE-EARTH SCIENCE AND TECHNOLOGY