

MIRAI MR12-05 Leg2 Lowered Acoustic Doppler Current Profiler (LADCP)

Last Modified: 2018-05-12

[ReadMe](#) [Observation Data](#) [Data Format](#)

Cruise ID: [MR12-05 Leg2](#)

Lowered Acoustic Doppler Current Profiler (LADCP) : Processed (PI)

Data Policy: [JAMSTEC](#)

Observation Items: Depth, Velocity (zonal and meridional)

Science Keywords:

OCEANS > OCEAN CIRCULATION > OCEAN CURRENTS

Cruise Report

http://www.godac.jamstec.go.jp/catalog/data/doc_catalog/media/MR12-05_leg1-3_all.pdf

For Using Data

Principal Investigator

Hiroshi Uchida (JAMSTEC)

Use Constraints

See [Terms and Conditions](#) about constrain of use.

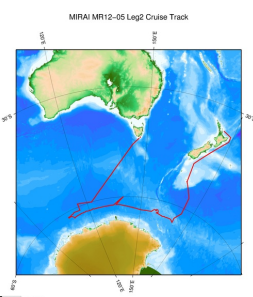
Data Citation

See [Terms and Conditions](#) about data citation.

Overview

Please see the [Data book](#) for details of data.

Related Information



[Enlarge Image](#)

MR12-05 Leg2

Ship Name: MIRAI

Period: 2012-11-27 - 2013-01-03

Chief Scientist: Katsuro Katsumata (JAMSTEC)

Proposal ▶ WOCE-revisit in the western Pacific and Southern oceans

Title:

Update History

2018-05-12	An observation data was registerd.
2015-05-31	An observation data was registerd.

JAMSTEC

[Site Policy](#)
[Privacy Policy](#)
[Application for Data and Samples](#)
[Data Policy](#)

[What's New](#)
[Update History](#)
[Feeds](#)

Lists

[Publication List](#)
[Amount of Public Info.](#)

[Data](#)
[Map Search](#)
[Data Tree](#)
[Detailed Search](#)

Information of the Ships

NATSUSHIMA
KAIYO
YOKOSUKA
MIRAI
KAIREI
CHIKYU
KAIMEI
SHINSEI MARU
HAKUHO MARU

Information of the Submersibles

KAIKO
SHINKAI 2000
SHINKAI 6500
DEEP TOW
HYPER-DOLPHIN
URASHIMA
YOKOSUKA DEEP TOW
6K Camera DEEP TOW
6K Sonar DEEP TOW
KM-ROV
POWER GRAB SAMPLER (SHELL)
POWER GRAB SAMPLER (CLOW)
BMS

Go to a Cruise Information

Cruise ID:

Go to a Dive Information

Dive ID:

MIRAI MR12-05 Leg2 Lowered Acoustic Doppler Current Profiler (LADCP)

Last Modified: 2018-05-12

[ReadMe](#) [Observation Data](#) [Data Format](#)

Cruise ID: [MR12-05 Leg2](#)

Lowered Acoustic Doppler Current Profiler (LADCP) : Processed (PI)

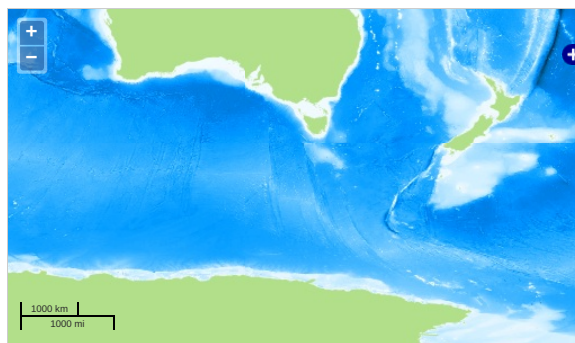
Data Policy: [JAMSTEC](#)

Observation Items: Depth, Velocity (zonal and meridional)

Science Keywords:

OCEANS > OCEAN CIRCULATION > OCEAN CURRENTS

Observation Map



... Observation Line ... Navigation ... Observation, Dive Point, Hole

Data List

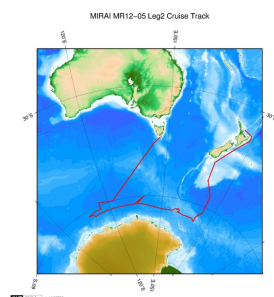
☐ File names

☐ bot.zip

☐ lad.zip

☐ readme_ladcp.txt

Related Information



[Enlarge Image](#)

MR12-05 Leg2

Ship Name: MIRAI

Period: 2012-11-27 - 2013-01-03

Chief Scientist: Katsuro Katsumata (JAMSTEC)

Proposal ▶ WOCE-revisit in the western Pacific and Southern oceans

Title:

Update History

2018-05-12	An observation data was registered.
2015-05-31	An observation data was registered.

JAMSTEC

[Site Policy](#)
[Privacy Policy](#)
[Application for Data and Samples](#)
[Data Policy](#)

[What's New](#)
[Update History](#)
[Feeds](#)

Lists

[Publication List](#)
[Amount of Public Info.](#)

Data

[Map Search](#)
[Data Tree](#)
[Detailed Search](#)

Information of the Ships

NATSUSHIMA
KAIYO
YOKOSUKA
MIRAI
KAIREI
CHIKYU
KAIMEI
SHINSEI MARU
HAKUHO MARU

Information of the Submersibles

KAIKO
SHINKAI 2000
SHINKAI 6500
DEEP TOW
HYPER-DOLPHIN
URASHIMA
YOKOSUKA DEEP TOW
6K Camera DEEP TOW
6K Sonar DEEP TOW
KM-ROV
POWER GRAB SAMPLER (SHELL)
POWER GRAB SAMPLER (CLOW)
BMS

Go to a Cruise Information

Cruise ID:

Go to a Dive Information

Dive ID: