

MIRAI MR13-03 Leg1 Conductivity-Temperature-Depth Profiler (CTD)

Last Modified: 2017-06-22

[ReadMe](#) [Observation Data](#) [Data Format](#)

Cruise ID: [MR13-03 Leg1](#)

Conductivity-Temperature-Depth Profiler (CTD): Processed (DMO)-QCed

Data Policy: [JAMSTEC](#)

Observation Items: Pressure, Temperature, Salinity, Dissolved oxygen

Science Keywords:

OCEANS > OCEAN CHEMISTRY > OXYGEN
OCEANS > OCEAN TEMPERATURE > WATER TEMPERATURE
OCEANS > SALINITY/DENSITY > SALINITY

Cruise Report

http://www.godac.jamstec.go.jp/catalog/data/doc_catalog/media/MR13-03_leg1-2_all.pdf

For Using Data

Principal Investigator

Data Management Office

Use Constraints

See [Terms and Conditions](#) about constrain of use.

Data Citation

See [Terms and Conditions](#) about data citation.

Instrument

Instrument:

Water sampling system with CTD (30
litters * 24 bottles)



Instrument:

Water sampling system with CTD (12
litters * 36 bottles)



Instrument:

Water sampling system with CTD (12
litters * 12 bottles)



Instrument:

Conductivity temperature depth
measurements (CTD)



Overview

CTD(Conductivity-Temperature-Depth profiler) is used to observe the vertical profiles of temperature and conductivity.

Usually, this system is operated with multicylinder water sampler.

Observed signal is transmitted from sensor to the operation room on board using wire cable, and electric power is supplied from vessel to sensor.

Details of sensors attached to CTD system for MR13-03_leg1 cruise are presented in "System".

The following software, developed and supplied by the Sea-Bird Electronics, Inc., was used in MR13-03_leg1.

SEASAVE(ver 7.22.5) for data acquisition

SEASOFT(ver 7.22.5) for data processing

Data presented on this website is averaged over 1db.

System

· Pressure sensor

Model : SBE9plus, Sea-Bird Electronics,Inc.

Serial number : 79511

Measurement range : up to 10500m

Accuracy : 0.015% F.S.

Resolution : 0.001% F.S.

· Temperature sensor

Model : SBE3, Sea-Bird Electronics,Inc.

Serial number : 031525

Measurement range : -5.0 to +35degC

Accuracy : 0.001degC

Resolution : 0.0002degC

· Salinity sensor

Model : SBE4, Sea-Bird Electronics,Inc.

Serial number : 042240

Measurement range : 0.0 to 7 S/m

Accuracy : 0.0003 S/m

Resolution : 0.00004 S/m
DO sensor
Model : SBE43, Sea-Bird Electronics, Inc.
Serial number : 430205
Measurement range : 120% of surface saturation
Accuracy : 2% of saturation

Sensors used in each cast is as follows.

Cast name	Serial number of sensor			
	Pressure	Temperature	Salinity	Dissolved Oxygen
N01M01	79511	031525	042240	430205
N02M01	79511	031525	042240	430205
N03M01	79511	031525	042240	430205

Calibration Information

Calibration Information is as follows.

Calibration Information

Data processing

(1) Data processing sequence for SEASOFT is as follows;

("*" is not SEASOFT original procedure.)

command	function
datcnv	Convert raw data to engineering units, and store converted data in file.
alignctd	Align data relative to pressure (typically used for conductivity, temperature, and oxygen)
wildedit	Mark a data value with badflag to eliminate wild points.
celltm	Perform conductivity thermal mass correction.
filter	Low-pass filter columns of data.
wfilter	Median filter removes spikes of fluorometer data.
section	Extract rows of data from file.
loopedit	Mark a scan with badflag if scan fails pressure reversal or minimum velocity tests.
derive	Calculate oxygen. (with oxygen sensor)
binavg	Average data, basing bins on pressure, depth, scan number, or time range.
derive	Calculate salinity, density, etc..
bottomcut*	Bottom cut deletes discontinuous scan bottom data if it's created by BINAVG.

(2) Quality control

QCed data were added flag according to the NODC (National Oceanographic Data Center) quality control procedure.

- 1) The gradient check of adjacent depth data
- 2) The density inversion check
- 3) The broad range check set up at given ocean space and depth

Please see the site of NODC of the following link for quality control procedure in detail.

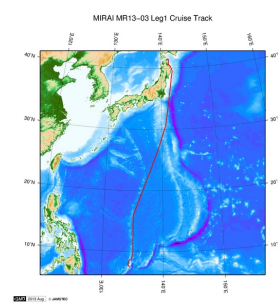
QUALITY CONTROL AND PROCESSING OF HISTORICAL OCEANOGRAPHIC TEMPERATURE, SALINITY, AND OXYGEN DATA

In addition, an abnormal value is identified by a visual check, and the data after visual QC is released.

Note

(1) In this cruise, there is extra data (fluorescence intensity) in addition to temperature, salinity, dissolved oxygen that has been opened to the public. Please contact us from "Contact Us" above if necessary.

Related Information



[Enlarge Image](#)

MR13-03 Leg1

Ship Name: MIRAI
Period: 2013-05-31 - 2013-06-10
Chief Scientist: Masaki Katsumata (JAMSTEC)
Project Name: [MJO Research]
Proposal ▶ Observational Study on the Intreseasonal Variability over the western Pacific
Title:

Update History

2017-06-22	An observation data was registered.
2015-06-30	An observation data was registered.

JAMSTEC

[Site Policy](#)
[Privacy Policy](#)
[Application for Data and Samples](#)
[Data Policy](#)

[What's New](#)
[Update History](#)
[Feeds](#)

Lists

[Publication List](#)
[Amount of Public Info.](#)

Data

[Map Search](#)
[Data Tree](#)
[Detailed Search](#)

Information of the Ships

NATSUSHIMA
KAIYO
YOKOSUKA
MIRAI
KAIREI
CHIKYU
KAIMEI
SHINSEI MARU
HAKUHO MARU

Information of the Submersibles

KAIKO
SHINKAI 2000
SHINKAI 6500
DEEP TOW
HYPER-DOLPHIN
URASHIMA
YOKOSUKA DEEP TOW
6K Camera DEEP TOW
6K Sonar DEEP TOW
KM-ROV
POWER GRAB SAMPLER (SHELL)
POWER GRAB SAMPLER (CLOW)
BMS

Go to a Cruise Information

Cruise ID:

Go to a Dive Information

Dive ID:



MIRAI MR13-03 Leg1 Conductivity-Temperature-Depth Profiler (CTD)

Last Modified: 2017-06-22

[ReadMe](#) [Observation Data](#) [Data Format](#)

 Cruise ID: [MR13-03 Leg1](#)

Conductivity-Temperature-Depth Profiler (CTD): Processed (DMO)-QCed

 Data Policy: [JAMSTEC](#)

CTD DMO

Format Description for the Corrected Data

Provided in the Exchange Format of CCHDO (CLIVAR and Carbon Hydrographic Data Office). Please see the following link for details of Exchange Format.

[CCHDO | CLIVAR & Carbon Hydrographic Data Office](#)

Data in following cruise is not expressed with Exchange Format. Please see the site of each cruise for format.

MR02-K05 Leg1

MR04-05

Format Description for the QCed Data

Each data file contains one line header (meta data) followed by data lines for each cast.

The number of data lines are recorded in the header.

Header part

No.	Column	Content	Format	Remarks
1	1	Header ID	a1	fixed as '#'
2	3 - 6	Data ID	a4	CTD
3	8 - 22	Cruise ID	a15	MYYY-(K)XX(_legx)
4	24 - 31	Cast name	a8	
5	33 - 40	Date	i8	YYYYMMDD (UTC)
6	42 - 45	Time	i4	hhmm (UTC)
7	47 - 55	Latitude	i2,a1,f5.2,a1	dd-mm.mmN(S)
8	57 - 66	Longitude	i3,a1,f5.2,a1	ddd-mm.mmE(W)
9	68 - 71	Number of data lines	i4	
10	72 - 73	Terminator	-	CR+LF

Data part

No.	Column	Content	Unit	Format	Remarks
1	1 - 11	Pressure	dbar	f11.3	
2	12 - 22	Temperature	deg-C	f11.4	ITS-90
3	23 - 33	Salinity	PSU	f11.4	PSS-78
4	34 - 44	Dissolved oxygen	umol/kg	f11.3	
5	45 - 55	Flag	-	i11	1 - 7 : space 8 : flag of pressure 9 : flag of temperature 10 : flag of salinity 11 : flag of dissolved oxygen * reference : Definition of Quality Control Flags
6	56 - 57	Terminator	-	-	CR+LF

Each contents of the data part is stored in 11 bytes.

Missing value is presented by '-5', and error value is presented by '-9'.

Definition of Quality Control Flags

1. Depth Flags

- 0 - accepted value
- 1 - error in recorded depth (same or less than previous depth)
- 2 - density inversion

2. Observed Level Flags

- N - missing value
- 0 - accepted value
- 1 - range outlier (outside of broad range check)
- 2 - failed inversion check
- 3 - failed gradient check
- 4 - zero anomaly
- 5 - failed combined gradient and inversion checks
- 6 - failed range and inversion checks
- 7 - failed range and gradient checks
- 8 - failed range and zero anomaly checks
- 9 - failed range and combined gradient and inversion checks
- A - failed visual check

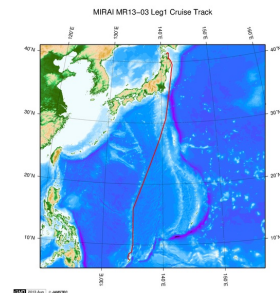
QCed data were added flag according to the NODC (National Oceanographic Data Center) quality control procedure, additionally visually checked. Please see the site of NODC of the following link for quality control procedure.

[QUALITY CONTROL AND PROCESSING OF HISTORICAL OCEANOGRAPHIC TEMPERATURE, SALINITY, AND OXYGEN DATA](#)

Sample Program

[ex_read2.f](#)

Related Information



[Enlarge Image](#)

MR13-03 Leg1

Ship Name: MIRAI

Period: 2013-05-31 - 2013-06-10

Chief Scientist: Masaki Katsumata (JAMSTEC)

Project Name: [MJO Research]

Proposal ▶ Observational Study on the Intreseasonal Variability over the western Pacific

Title:

Update History

2017-06-22	An observation data was registerd.
2015-06-30	An observation data was registerd.

JAMSTEC

[Site Policy](#)

[Privacy Policy](#)

[Application for Data and Samples](#)

[Data Policy](#)

What's New

[Update History](#)

[Feeds](#)

Lists

[Publication List](#)

[Amount of Public Info.](#)

Data

[Map Search](#)

[Data Tree](#)

[Detailed Search](#)

Information of the Ships

[NATSUSHIMA](#)

[KAIYO](#)

[YOKOSUKA](#)

[MIRAI](#)

[KAIREI](#)

[CHIKYU](#)

[KAIMEI](#)

[SHINSEI MARU](#)

[HAKUHO MARU](#)

Information of the Submersibles

[KAIKO](#)

[SHINKAI 2000](#)

[SHINKAI 6500](#)

[DEEP TOW](#)

[HYPER-DOLPHIN](#)

[URASHIMA](#)

[YOKOSUKA DEEP TOW](#)

[6K Camera DEEP TOW](#)

[6K Sonar DEEP TOW](#)

[KM-ROV](#)

[POWER GRAB SAMPLER \(SHELL\)](#)

[POWER GRAB SAMPLER \(CLOW\)](#)

[BMS](#)

Go to a Cruise Information

Cruise ID:

Go

Go to a Dive Information

Dive ID:

Go

Copyright 2011 Japan Agency for Marine-Earth Science and Technology



JAMSTEC

国立研究開発法人
海洋研究開発機構
JAPAN AGENCY FOR MARINE-EARTH SCIENCE AND TECHNOLOGY

MIRAI MR13-03 Leg1 Conductivity-Temperature-Depth Profiler (CTD)

Last Modified: 2017-06-22

[ReadMe](#) [Observation Data](#) [Data Format](#)

Cruise ID: [MR13-03 Leg1](#)

Conductivity-Temperature-Depth Profiler (CTD): Processed (DMO)-QCed

Data Policy: [JAMSTEC](#)

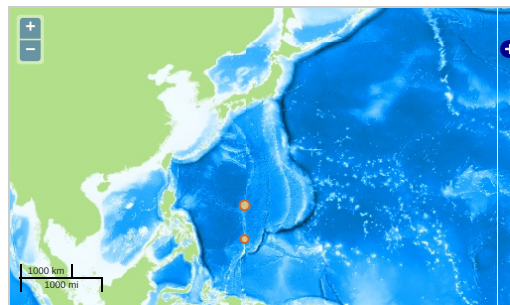
Observation Items: Pressure, Temperature, Salinity, Dissolved oxygen

Science Keywords:

OCEANS > OCEAN CHEMISTRY > OXYGEN
OCEANS > OCEAN > WATER
TEMPERATURE TEMPERATURE
OCEANS > SALINITY/DENSITY > SALINITY

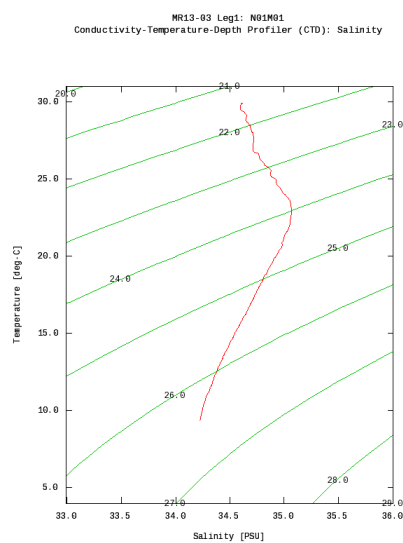
Observation Map

- Clicking the icon displays a balloon with observation information.
- Then click the observation name, figures will be displayed.



Figures

N01M01



Only values evaluated as "good : all flags are 0" are plotted in profiles.
Please see Format Page for the definition of quality flags.

Data List

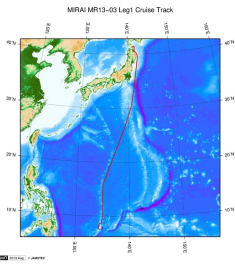
[Add to Basket](#)

- ☐ File names
- ☐ N01M01.dat
 - ☐ N02M01.dat
 - ☐ N03M01.dat
 - ☐ ex_read2.f (Sample Program)

- Observation List
The list of observation is shown as follows.

Observation	Time and Date	Lat. [°]	Lon. [°]
N01M01	2013-06-07 06:37	16.0080	135.0026
N02M01	2013-06-07 23:25	13.0033	135.0018
N03M01	2013-06-08 16:01	10.0013	135.0031

Related Information



MR13-03 Leg1

Ship Name: MIRAI


Period: 2013-05-31 - 2013-06-10

Chief Scientist: Masaki Katsumata (JAMSTEC)

Project Name: [MJO Research]

Proposal ▶ Observational Study on the Intreseasonal Variability over the western Pacific

Title:

 [Enlarge Image](#)

Update History	
2017-06-22	An observation data was registerd.
2015-06-30	An observation data was registerd.

JAMSTEC

Site Policy

Privacy Policy

Application for Data and Samples

Data Policy

What's New

Update History

Feeds

Lists

Publication List

Amount of Public Info.

Data

Map Search

Data Tree

Detailed Search

Information of the Ships

NATSUSHIMA

KAIYO

YOKOSUKA

MIRAI

KAIREI

CHIKYU

KAIMEI

SHINSEI MARU

HAKUHO MARU

Information of the Submersibles

KAIKO

SHINKAI 2000

SHINKAI 6500

DEEP TOW

HYPER-DOLPHIN

URASHIMA

YOKOSUKA DEEP TOW

6K Camera DEEP TOW

6K Sonar DEEP TOW

KM-ROV

POWER GRAB SAMPLER (SHELL)

POWER GRAB SAMPLER (CLOW)

BMS

Go to a Cruise Information


Cruise ID:

Go

Go to a Dive Information

Dive ID:

Go

 **JAMSTEC** 国立研究開発法人 海洋研究開発機構

JAPAN AGENCY FOR MARINE-EARTH SCIENCE AND TECHNOLOGY

Copyright 2011 Japan Agency for Marine-Earth Science and Technology