

NATSUSHIMA NT08-12 Expendable Bathythermograph (XBT)

Last Modified: 2019-09-18

[ReadMe](#) [Observation Data](#) [Data Format](#)

Cruise ID: [NT08-12](#)

Expendable Bathythermograph (XBT): Processed (DMO)-QCed

Data Policy: [JAMSTEC](#)

Observation Items: Depth, Temperature

Science Keywords:

OCEANS > OCEAN TEMPERATURE > WATER TEMPERATURE

Cruise Report

http://www.godac.jamstec.go.jp/catalog/data/doc_catalog/media/NT08-12_all.pdf

For Using Data

Principal Investigator

Data Management Office

Use Constraints

See [Terms and Conditions](#) about constrain of use.

Data Citation

See [Terms and Conditions](#) about data citation.

Instrument

Instrument:

XBT



Overview

Using XBT (eXpendable Bathy Thermograph) system, the vertical distribution of water temperature is observed during free fall of its probe part in the seawater. On board, the analogue signal is converted to the temperature by data processor and the data is stored in PC. Depth data is calculated from the elapsed time.

System

(1) Launcher

Hand launcher

Manufacturer : Sippican, Inc.

Operation area : Rear upper deck

(2) Converter

Manufacturer : Tsurumi Seiki Co., LTD.

Location : Investigation room

Sampling rate : 50 msec

(3) XBT probe specifications

Probe Type	TSK T-5	TSK T-6	TSK T-7	TSK T-10
Temperature range [deg-C]	-2 to 35			
Temperature accuracy [deg-C]	+/- 0.2			
Temperature resolution [deg-C]	0.01			
Measurement depth [m]	1830	460	760	300
Depth accuracy [m]	5 or +/- 2% of depth; whichever is larger			
Maximum elapsed time [sec]	291	73	123	48
Rated ship speed [knot]	6	15	15	10

Since XBT carries no pressure sensor, we need to estimate depth from the elapsed time. The fall-rate equation is as follows.

$$Z = at + 10E^{-3} * bt^2$$

Where Z(m) is the depth and t(sec) is the elapsed time.

In addition, coefficients of the fall-rate equation are different by probe types.

Probe Type	TSK T-5	TSK T-6	TSK T-7	TSK T-10
Coefficient-a	6.828	6.691	6.691	6.301
Coefficient-b	-1.82	-2.25	-2.25	-2.16

* Coefficients listed above are supplied by Sippican, Inc., in USA.

The list of an XBT type used in each cast is as follows.

Cast name	Probe Serial No.	Probe Type	Launcher	Converter
BT 010720080505		T-5	Hand	MT 2001

Cast name	Probe Serial No.	Probe Type	Hand Launcher	Hand Converter
BT-019820080626	-	T-5	Hand	MK-30N
BT-019920080701	-	T-5	Hand	MK-30N
BT-020020080702	-	T-5	Hand	MK-30N

Data processing

(1) For sensor's stability, values of less than 1 m for temperature are replaced by missing values, respectively, based on manufacturer's recommendation.

(2) Quality control

QCed data were added flag according to the NODC (National Oceanographic Data Center) quality control procedure.

- 1) The gradient check of adjacent depth data
- 2) The broad range check set up at given ocean space and depth

Please see the site of NODC of the following link for quality control procedure in detail.

[QUALITY CONTROL AND PROCESSING OF HISTORICAL OCEANOGRAPHIC TEMPERATURE, SALINITY, AND OXYGEN DATA](#)

In addition, an abnormal value is identified by a visual check, and the data after visual QC is released.

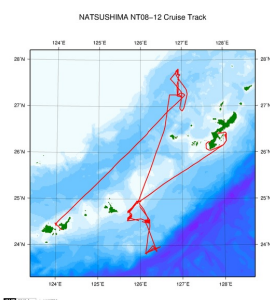
Note

(1) It is reported that T-5 probes produced by Tsurumi Seiki Co. Ltd. (TSK T-5 probes) have a fall-rate bias. Please see the following about publication policy of XBT fall-rate bias correction data.

[Publication policy of XBT fall-rate bias correction data](#)

Related Information

☒ Cruise Data ☐ Dive Data



[Enlarge Image](#)

NT08-12

Ship Name: NATSUSHIMA

Period: 2008-06-23 - 2008-07-04

Chief Scientist: Satoshi Kimura (The University of Tokyo)

Proposal ▶ Biogenesis and structure of cellulose in the deep sea Appendicularians

Title:

Update History

2019-09-18	An observation data was registered.
2017-06-23	An observation data was registered.
2014-09-04	An observation data was registered.
2014-03-11	An observation data was registered.
2012-10-27	An observation data was registered.

JAMSTEC

[Site Policy](#)
[Privacy Policy](#)
[Application for Data and Samples](#)
[Data Policy](#)

What's New
[Update History](#)
[Feeds](#)

Lists

[Publication List](#)
[Amount of Public Info.](#)

Data

[Map Search](#)
[Data Tree](#)
[Detailed Search](#)

Information of the Ships

NATSUSHIMA
 KAIYO
 YOKOSUKA
 MIRAI
 KAIREI
 CHIKYU
 KAIMEI
 SHINSEI MARU
 HAKUHO MARU

Information of the Submersibles

KAIKO
 SHINKAI 2000
 SHINKAI 6500
 DEEP TOW
 HYPER-DOLPHIN
 URASHIMA
 YOKOSUKA DEEP TOW
 6K Camera DEEP TOW
 6K Sonar DEEP TOW
 KM-ROV
 POWER GRAB SAMPLER (SHELL)
 POWER GRAB SAMPLER (CLOW)
 BMS

Go to a Cruise Information

Cruise ID:

Go to a Dive Information

Dive ID:

Copyright 2011 Japan Agency for Marine-Earth Science and Technology



JAMSTEC

国立研究開発法人
 海洋研究開発機構
 JAPAN AGENCY FOR MARINE-EARTH SCIENCE AND TECHNOLOGY

NATSUSHIMA NT08-12 Expendable Bathythermograph (XBT)

Last Modified: 2019-09-18

[ReadMe](#) [Observation Data](#) [Data Format](#)

Cruise ID: [NT08-12](#)

Expendable Bathythermograph (XBT): Processed (DMO)-QCed

Data Policy: [JAMSTEC](#)

XBT DMO

Each data file contains one line header (meta data) followed by data lines for each cast.

The number of data lines are recorded in the header.

Header part

No.	Column	Content	Format	Remarks
1	1	Header ID	a1	fixed as '#'
2	3 - 6	Data ID	a4	XBT
3	8 - 22	Cruise ID	a15	
4	33 - 40	Date	i8	YYYYMMDD (UTC)
5	42 - 45	Time	i4	hhmm (UTC)
6	47 - 55	Latitude	i2,a1,f5.2,a1	dd-mm.mmN(S)
7	57 - 66	Longitude	i3,a1,f5.2,a1	ddd-mm.mmE(W)
8	68 - 71	Number of data lines	i4	
9	72 - 73	Terminator	-	CR+LF

Data part

No.	Column	Content	Unit	Format	Remarks
1	1 - 11	Depth	m	f11.1	
2	12 - 22	Temperature	deg-C	f11.2	ITS-90
3	45 - 55	Flag	-	i11	1 - 7 : space 8 : flag of depth 9 : flag of temperature 10 - 11 : space * reference : Definition of Quality Control Flags
4	56 - 57	Terminator	-	-	CR+LF

Each contents of the data part is stored in 11 bytes.

Missing value is presented by '-5', and error value is presented by '-9'.

Definition of Quality Control Flags

1. Depth Flags

- 0 - accepted value
- 1 - error in recorded depth (same or less than previous depth)
- 2 - density inversion

2. Observed Level Flags

- N - missing value
- 0 - accepted value
- 1 - range outlier (outside of broad range check)
- 2 - failed inversion check
- 3 - failed gradient check
- 4 - zero anomaly
- 5 - failed combined gradient and inversion checks
- 6 - failed range and inversion checks
- 7 - failed range and gradient checks
- 8 - failed range and zero anomaly checks
- 9 - failed range and combined gradient and inversion checks
- A - failed visual check

* Range and gradient check is performed to XBT data.

QCed data were added flag according to the NODC (National Oceanographic Data Center) quality control procedure, additionally visually checked. Please see the site of NODC of the following link for quality control procedure.

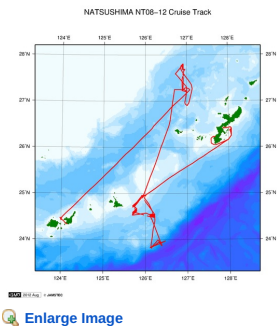
[QUALITY CONTROL AND PROCESSING OF HISTORICAL OCEANOGRAPHIC TEMPERATURE, SALINITY, AND OXYGEN DATA](#)

Sample Program

[ex_read2.f](#)

Related Information

☒ Cruise Data ☐ Dive Data



NT08-12

Ship Name: NATSUSHIMA

Period: 2008-06-23 - 2008-07-04

Chief Scientist: Satoshi Kimura (The University of Tokyo)

Proposal ▶ Biogenesis and structure of cellulose in the deep sea Appendicularians
Title:

Update History

2019-09-18	An observation data was registerd.
2017-06-23	An observation data was registerd.
2014-09-04	An observation data was registerd.
2014-03-11	An observation data was registerd.
2012-10-27	An observation data was registerd.

JAMSTEC

Site Policy

Privacy Policy

Application for Data and Samples

Data Policy

What's New

Update History

Feeds

Lists

Publication List

Amount of Public Info.

Data

Map Search

Data Tree

Detailed Search

Information of the Ships

NATSUSHIMA

KAIYO

YOKOSUKA

MIRAI

KAIREI

CHIKYU

KAIMEI

SHINSEI MARU

HAKUHO MARU

Information of the Submersibles

KAIKO

SHINKAI 2000

SHINKAI 6500

DEEP TOW

HYPER-DOLPHIN

URASHIMA

YOKOSUKA DEEP TOW

6K Camera DEEP TOW

6K Sonar DEEP TOW

KM-ROV

POWER GRAB SAMPLER (SHELL)

POWER GRAB SAMPLER (CLOW)

BMS

Go to a Cruise Information

Cruise ID:

Go

Go to a Dive Information

Dive ID:

Go

Copyright 2011 Japan Agency for Marine-Earth Science and Technology



JAMSTEC 国立研究開発法人
海洋研究開発機構
JAPAN AGENCY FOR MARINE-EARTH SCIENCE AND TECHNOLOGY

NATSUSHIMA NT08-12 Expendable Bathythermograph (XBT)

Last Modified: 2019-09-18

[ReadMe](#) [Observation Data](#) [Data Format](#)

Cruise ID: **NT08-12**

Expendable Bathythermograph (XBT): Processed (DMO)-QCed

Data Policy: **JAMSTEC**

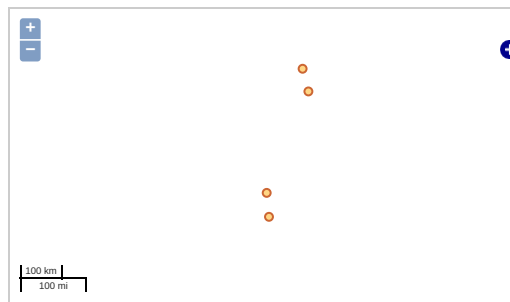
Observation Items: Depth, Temperature

Science Keywords:

OCEANS > OCEAN TEMPERATURE > WATER TEMPERATURE

Observation Map

1. Clicking the icon displays a balloon with observation information.
2. Then click the observation name, figures will be displayed.

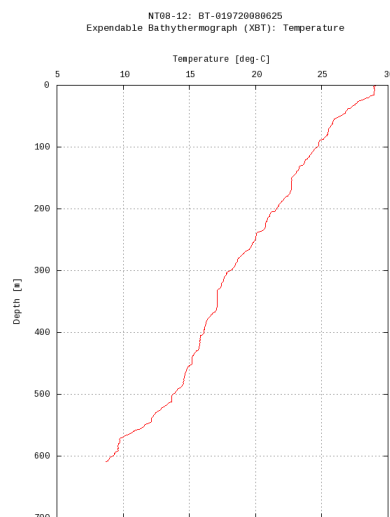


— ... Observation Line — ... Navigation ● ... Observation, Dive Point, Hole

Imagery reproduced from ...

Figures

BT-019720080625



Only values evaluated as "good" : all flags are 0" are plotted in profiles.
Please see Format Page for the definition of quality flags.

Data List

[Add to Basket](#)

File names

☐ BT-019720080625.dat
☐ BT-019820080626.dat
☐ BT-019920080701.dat
☐ BT-020020080702.dat
☐ ex_read2.f (Sample Program)

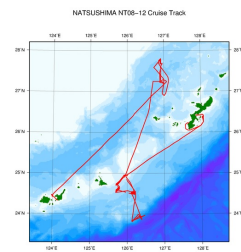
Observation List

The list of observation is shown as follows.

Observation	Time and Date	Lat. [°]	Lon. [°]
BT-019720080625	2008-06-25 20:52	25.0253	126.1018
BT-019820080626	2008-06-26 04:26	24.4938	126.1528
BT-019920080701	2008-07-01 01:41	27.7801	126.8990
BT-020020080702	2008-07-02 08:25	27.2766	127.0276

Related Information

[Cruise Data](#) [Dive Data](#)



[Enlarge Image](#)

NT08-12

Ship Name: NATSUSHIMA

Period: 2008-06-23 - 2008-07-04

Chief Scientist: Satoshi Kimura (The University of Tokyo)

Proposal ▶ Biogenesis and structure of cellulose in the deep sea Appendicularians

Title:

Update History

2019-09-18	An observation data was registerd.
2017-06-23	An observation data was registerd.
2014-09-04	An observation data was registerd.
2014-03-11	An observation data was registerd.
2012-10-27	An observation data was registerd.

JAMSTEC

[Site Policy](#)

[Privacy Policy](#)

[Application for Data and Samples](#)

[Data Policy](#)

[What's New](#)

[Update History](#)

[Feeds](#)

Lists

[Publication List](#)

[Amount of Public Info.](#)

Data

[Map Search](#)

[Data Tree](#)

[Detailed Search](#)

Information of the Ships

[NATSUSHIMA](#)

[KAIYO](#)

[YOKOSUKA](#)

[MIRAI](#)

[KAIREI](#)

[CHIKYU](#)

[KAIMEI](#)

[SHINSEI MARU](#)

[HAKUHO MARU](#)

Information of the Submersibles

[KAIKO](#)

[SHINKAI 2000](#)

[SHINKAI 6500](#)

[DEEP TOW](#)

[HYPER-DOLPHIN](#)

[URASHIMA](#)

[YOKOSUKA DEEP TOW](#)

[6K Camera DEEP TOW](#)

[6K Sonar DEEP TOW](#)

[KM-ROV](#)

[POWER GRAB SAMPLER \(SHELL\)](#)

[POWER GRAB SAMPLER \(CLOW\)](#)

[BMS](#)

Go to a Cruise Information

Cruise ID:

Go

Go to a Dive Information

Dive ID:

Go

Copyright 2011 Japan Agency for Marine-Earth Science and Technology



JAMSTEC 国立研究開発法人
海洋研究開発機構
JAPAN AGENCY FOR MARINE-EARTH SCIENCE AND TECHNOLOGY