

MIRAI MR07-04 Bathymetry (MBES)

Last Modified: 2017-04-11

[ReadMe](#)

[Observation
Data](#)

Cruise ID: [MR07-04](#)

Bathymetry (MBES): Processed (PI)

Data Policy: [JAMSTEC](#)

Observation Items: Depth

Science Keywords:

OCEANS > BATHYMETRY/SEAFLOOR TOPOGRAPHY > BATHYMETRY
SOLID EARTH > GEOMORPHOLOGY

Cruise Report

http://www.godac.jamstec.go.jp/catalog/data/doc_catalog/media/MR07-04_all.pdf

[For Using Data](#)

Principal Investigator

Data Management Office

Use Constraints

See [Terms and Conditions](#) about constrain of use.

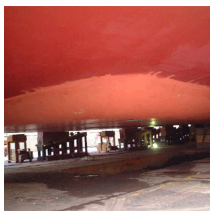
Data Citation

See [Terms and Conditions](#) about data citation.

Instrument

Instrument:

Multi-narrow beam echo sounder (-
MR12-E01)



About this data

Please see the [Data book](#) for details of data.

Gridded bathymetry data

grid_p01.dat

grid_p14.dat

File format:

Column 1: Latitude (deg)

Column 2: Longitude (deg)

Column 3: Depth (m)

Along track bathymetry data

track_p01.dat

track_p14.dat

File format:

Column 1: Distance (km)

Column 2: Latitude (deg)

Column 3: Longitude (deg)

Column 4: Depth (m)

CTD station location data

dist_p01.dat

dist_p14.dat

File format:

Column 1: Distance (km)

Column 2: Latitude (deg)

Column 3: Longitude (deg)

Column 4: Station number (WHPID_STNNBR_CASTNO)

Contact

Hiroshi Uchida (JAMSTEC)

huchida@jamstec.go.jp

Related Information



MIRAI MR07-04 Cruise Track

MR07-04
Ship Name: MIRAI
Period: 2007-07-24 - 2007-09-03
Chief Scientist: Takeshi Kawano (JAMSTEC)
Project Name: [POST-WOCE Hydrography]

 [Enlarge Image](#)

Update History	
2017-04-11	An observation data was registerd.
2012-10-30	An observation data was registerd.

JAMSTEC
Site Policy
Privacy Policy
Application for Data and Samples
Data Policy
What's New
Update History
Feeds

Lists
Publication List
Amount of Public Info.

Data
Map Search
Data Tree
Detailed Search

Information of the Ships
NATSUSHIMA
KAIYO
YOKOSUKA
MIRAI
KAIREI
CHIKYU
KAIMEI
SHINSEI MARU
HAKUHO MARU

Information of the Submersibles
KAIKO
SHINKAI 2000
SHINKAI 6500
DEEP TOW
HYPER-DOLPHIN
URASHIMA
YOKOSUKA DEEP TOW
6K Camera DEEP TOW
6K Sonar DEEP TOW
KM-ROV
POWER GRAB SAMPLER (SHELL)
POWER GRAB SAMPLER (CLOW)
BMS

Go to a Cruise Information
Cruise ID:

Go to a Dive Information
Dive ID:



JAMSTEC
JAPAN AGENCY FOR MARINE-EARTH SCIENCE AND TECHNOLOGY

国立研究開発法人
海洋研究開発機構

Copyright 2011 Japan Agency for Marine-Earth Science and Technology

MIRAI MR07-04 Bathymetry (MBES)

Last Modified: 2017-04-11

[ReadMe](#) [Observation Data](#)

Cruise ID: [MR07-04](#)

Bathymetry (MBES): Processed (PI)

Data Policy: [JAMSTEC](#)

Observation Items: Depth

Science Keywords:

OCEANS > BATHYMETRY/SEAFLOOR TOPOGRAPHY > BATHYMETRY
SOLID EARTH > GEOMORPHOLOGY

Cruise Report

http://www.godac.jamstec.go.jp/catalog/data/doc_catalog/media/MR07-04_all.pdf

For Using Data

Principal Investigator

Data Management Office

Use Constraints

See [Terms and Conditions](#) about constrain of use.

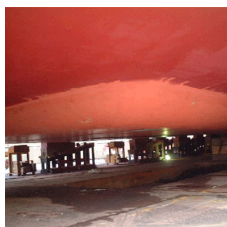
Data Citation

See [Terms and Conditions](#) about data citation.

Instrument

Instrument:

Multi-narrow beam echo sounder (-
MR12-E01)



About this data

Please see the [Data book](#) for details of data.

Gridded bathymetry data

grid_p01.dat

grid_p14.dat

File format:

Column 1: Latitude (deg)

Column 2: Longitude (deg)

Column 3: Depth (m)

Along track bathymetry data

track_p01.dat

track_p14.dat

File format:

Column 1: Distance (km)

Column 2: Latitude (deg)

Column 3: Longitude (deg)

Column 4: Depth (m)

CTD station location data

dist_p01.dat

dist_p14.dat

File format:

Column 1: Distance (km)

Column 2: Latitude (deg)

Column 3: Longitude (deg)

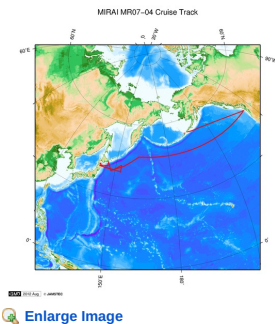
Column 4: Station number (WHPID_STNNBR_CASTNO)

Contact

Hiroshi Uchida (JAMSTEC)

huchida@jamstec.go.jp

Related Information



MR07-04

Ship Name: MIRAI
Period: 2007-07-24 - 2007-09-03
Chief Scientist: Takeshi Kawano (JAMSTEC)
Project Name: [POST-WOCE Hydrography]

Update History

2017-04-11	An observation data was registerd.
2012-10-30	An observation data was registerd.

JAMSTEC

[Site Policy](#)
[Privacy Policy](#)
[Application for Data and Samples](#)
[Data Policy](#)

[What's New](#)
[Update History](#)
[Feeds](#)

Lists

[Publication List](#)
[Amount of Public Info.](#)

Data

[Map Search](#)
[Data Tree](#)
[Detailed Search](#)

Information of the Ships

[NATSUSHIMA](#)
[KAIYO](#)
[YOKOSUKA](#)
[MIRAI](#)
[KAIREI](#)
[CHIKYU](#)
[KAIMEI](#)
[SHINSEI MARU](#)
[HAKUHO MARU](#)

Information of the Submersibles

[KAIKO](#)
[SHINKAI 2000](#)
[SHINKAI 6500](#)
[DEEP TOW](#)
[HYPER-DOLPHIN](#)
[URASHIMA](#)
[YOKOSUKA DEEP TOW](#)
[6K Camera DEEP TOW](#)
[6K Sonar DEEP TOW](#)
[KM-ROV](#)
[POWER GRAB SAMPLER \(SHELL\)](#)
[POWER GRAB SAMPLER \(CLOW\)](#)
[BMS](#)

Go to a Cruise Information

Cruise ID:

Go to a Dive Information

Dive ID:



MIRAI MR07-04 Bathymetry (MBES)

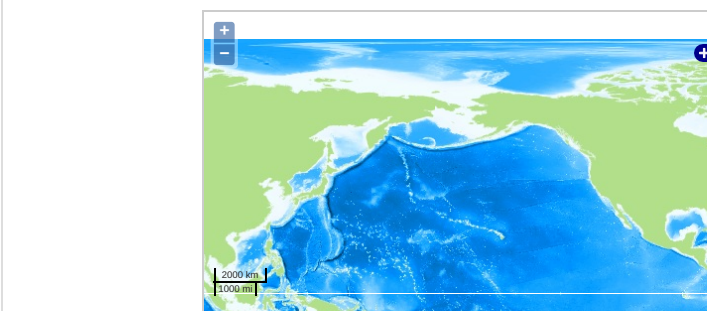
Last Modified: 2017-04-11

[ReadMe](#) [Observation Data](#)

Cruise ID: [MR07-04](#)
Bathymetry (MBES): Processed (PI)
Data Policy: [JAMSTEC](#)
Observation Items: Depth
Science Keywords:

OCEANS > BATHYMETRY/SEAFLOOR > BATHYMETRY
TOPOGRAPHY
SOLID EARTH > GEOMORPHOLOGY

Observation Map



... Observation Line ... Navigation ... Observation, Dive Point, Hole

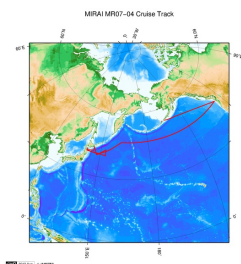
Data List

[Add to Basket](#)

File names

☐ MR07-04_MR07-06_bathymetry.zip

Related Information



MR07-04
Ship Name: MIRAI
Period: 2007-07-24 - 2007-09-03
Chief Scientist: Takeshi Kawano (JAMSTEC)
Project Name: [POST-WOCE Hydrography]

[Enlarge Image](#)

Update History

2017-04-11	An observation data was registered.
2012-10-30	An observation data was registered.

JAMSTEC

[Site Policy](#)
[Privacy Policy](#)
[Application for Data and Samples](#)
[Data Policy](#)
[What's New](#)
[Update History](#)
[Feeds](#)

Lists

[Publication List](#)
[Amount of Public Info.](#)

Data

[Map Search](#)
[Data Tree](#)
[Detailed Search](#)

Information of the Ships

NATSUSHIMA
KAIYO
YOKOSUKA
MIRAI
KAIREI
CHIKYU
KAIMEI
SHINSEI MARU
HAKUHO MARU

Information of the Submersibles

KAIKO
SHINKAI 2000
SHINKAI 6500
DEEP TOW
HYPER-DOLPHIN
URASHIMA
YOKOSUKA DEEP TOW
6K Camera DEEP TOW
6K Sonar DEEP TOW
KM-ROV
POWER GRAB SAMPLER (SHELL)
POWER GRAB SAMPLER (CLOW)
BMS

Go to a Cruise Information

Cruise ID:

Go to a Dive Information

Dive ID: