

NATSUSHIMA NT12-14 surface meteorological data and sea surface heat flux data

Last Modified: 2018-01-23

[ReadMe](#) [Observation Data](#)

Cruise ID: [NT12-14](#)

surface meteorological data and sea surface heat flux data : Processed (PI)

Data Policy: [JAMSTEC](#)

Observation Items:

Science Keywords:

Data Information

ntsm_corrected.txt: corrected surface meteorological data

For air temperature, relative humidity, SLP, and rain rate, WXT520 values were used.

Sea level pressure (SLP) is (WXT520 value) + 1.5.

Shortwave radiation is (raw value) \times 0.975+22.0.

ntsm_flux.txt: sea surface heat flux

The COARE 3.0 algorithm was used.

Cruise Report

http://www.godac.jamstec.go.jp/catalog/data/doc_catalog/media/NT12-14_all.pdf

For Using Data

Principal Investigator

Yoshimi Kawai, Japan Agency for Marine-Earth Science and Technology

Use Constraints

none

Data Citation

See [Terms and Conditions](#) about data citation.

Instrument

Instrument:

Shortwave radiometer, Longwave

radiometer, Weather transmitter

Instrument Information:

Shortwave radiometer: CM-21

manufactured by Kipp&Zonen

Longwave radiometer: CG-4

manufactured by Kipp&Zonen

Weather transmitter: WT520

manufactured by Vaisala



Data Format

ntsm_corrected.txt

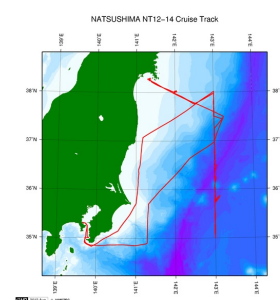
month day hour minute lat lon wind_dir(deg.) wind_speed(m/s) sst(degC) air_temp(degC) humidity(%) SLP(hPa) swr(W/m2) lwr(W/m2) rain_rate(mm/h)

current_dir(deg.) current_speed(knot)

ntsm_flux.txt

year, month, day, hour, minute, second, wind speed, air temperature, sea surface temperature, relative humidity, latent heat flux, sensible heat flux, sea surface specific humidity, 10m-height specific humidity, 10m-height air temperature, 10m-height wind speed, cool-skin SST, upward shortwave radiation, downward shortwave radiation, net shortwave radiation, upward longwave radiation, downward longwave radiation, net longwave radiation

Related Information



 [Enlarge Image](#)

[NT12-14](#)

Ship Name: NATSUSHIMA

Period: 2012-06-11 - 2012-06-18

Chief Scientist: Yoshimi Kawai (JAMSTEC)

Proposal Investigation of the atmospheric response to the Kuroshio Extension

Title:

Update History

2018-01-23
2014-08-31

An observation data was registerd.
An observation data was registerd.

JAMSTEC

[Site Policy](#)
[Privacy Policy](#)
[Application for Data and Samples](#)
[Data Policy](#)

[What's New](#)
[Update History](#)
[Feeds](#)

Lists

[Publication List](#)
[Amount of Public Info.](#)

Data
[Map Search](#)
[Data Tree](#)
[Detailed Search](#)

Information of the Ships

[NATSUSHIMA](#)
[KAIYO](#)
[YOKOSUKA](#)
[MIRAI](#)
[KAIREI](#)
[CHIKYU](#)
[KAIMEI](#)
[SHINSEI MARU](#)
[HAKUHO MARU](#)

Information of the Submersibles

[KAIKO](#)
[SHINKAI 2000](#)
[SHINKAI 6500](#)
[DEEP TOW](#)
[HYPER-DOLPHIN](#)
[URASHIMA](#)
[YOKOSUKA DEEP TOW](#)
[6K Camera DEEP TOW](#)
[6K Sonar DEEP TOW](#)
[KM-ROV](#)
[POWER GRAB SAMPLER \(SHELL\)](#)
[POWER GRAB SAMPLER \(CLOW\)](#)
[BMS](#)

Go to a Cruise Information

Cruise ID:

Go to a Dive Information

Dive ID:

Copyright 2011 Japan Agency for Marine-Earth Science and Technology



JAMSTEC

国立研究開発法人
海洋研究開発機構

JAPAN AGENCY FOR MARINE-EARTH SCIENCE AND TECHNOLOGY

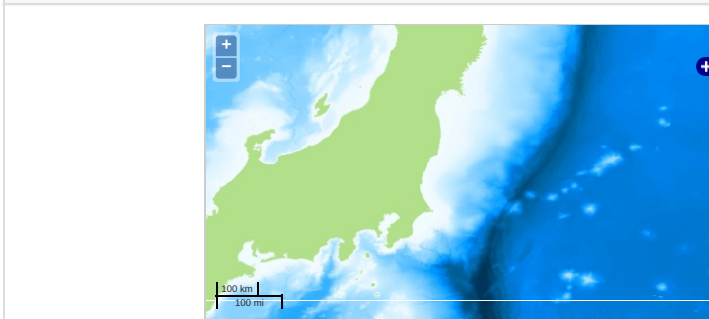
NATSUSHIMA NT12-14 surface meteorological data and sea surface heat flux data

Last Modified: 2018-01-23

[ReadMe](#) [Observation Data](#)

Cruise ID: **NT12-14**
surface meteorological data and sea surface heat flux dataProcessed (PI)
Data Policy: [JAMSTEC](#)
Observation Items:
Science Keywords:

Observation Map



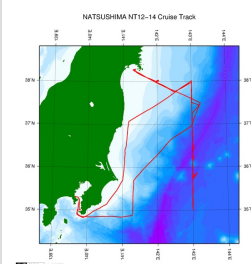
— ... Observation Line — ... Navigation ● ... Observation, Dive Point, Hole

Data List

[Add to Basket](#)

☐ File names
☐ ntsm_corrected.txt
☐ ntsm_flux.txt

Related Information



[Enlarge Image](#)

NT12-14

Ship Name: NATSUSHIMA
Period: 2012-06-11 - 2012-06-18
Chief Scientist: Yoshimi Kawai (JAMSTEC)
Proposal: Investigation of the atmospheric response to the Kuroshio Extension
Title:

Update History

2018-01-23	An observation data was registerd.
2014-08-31	An observation data was registerd.

JAMSTEC

[Site Policy](#)
[Privacy Policy](#)
[Application for Data and Samples](#)
[Data Policy](#)

What's New

[Update History](#)
[Feeds](#)

Lists

[Publication List](#)
[Amount of Public Info.](#)

Data

[Map Search](#)
[Data Tree](#)
[Detailed Search](#)

Information of the Ships

NATSUSHIMA
KAIYO
YOKOSUKA
MIRAI
KAIREI
CHIKYU
KAIMEI
SHINSEI MARU
HAKUHO MARU

Information of the Submersibles

KAIKO
SHINKAI 2000
SHINKAI 6500
DEEP TOW
HYPER-DOLPHIN
URASHIMA
YOKOSUKA DEEP TOW
6K Camera DEEP TOW
6K Sonar DEEP TOW
KM-ROV
POWER GRAB SAMPLER (SHELL)
POWER GRAB SAMPLER (CLOW)
BMS

Go to a Cruise Information

Cruise ID:

Go to a Dive Information

Dive ID: