

MIRAI MR15-03 Leg2 Sea-surface Photosynthetically Active Radiation (PAR)

Last Modified: 2017-11-09

[ReadMe](#) [Observation Data](#) [Data Format](#)

Cruise ID: [MR15-03 Leg2](#)

Sea-surface Photosynthetically Active Radiation (PAR) : Raw

Data Policy: [JAMSTEC](#)

Observation Items:

Science Keywords:

OCEANS > OCEAN OPTICS > PHOTOSYNTHETICALLY ACTIVE RADIATION

Cruise Report

http://www.godac.jamstec.go.jp/catalog/data/doc_catalog/media/MR15-03_leg2_all.pdf

For Using Data

Principal Investigator

Data Management Office

Use Constraints

See [Terms and Conditions](#) about constrain of use.

Data Citation

See [Terms and Conditions](#) about data citation.

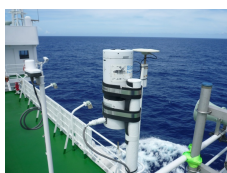
Period (UTC)

2015-10-09 18:10 – 2015-10-21 23:50

Instrument

Instrument:

Surface Photosynthetically available radiation (PAR) (~MR15-E01)



Overview

Photosynthetically available radiation (PAR) in the air was acquired by the radiometer PUV-510B, which was set up on the deck of the anti-rolling system. In addition, Ultraviolet irradiance (4 wavelengths) are also collected since May 2015 (after MR15-01 cruise).

Specifications

Manufacturer: Biospherical Instruments Inc.
Type: PUV-510B
Logging rate: 6 [second]
Location: Starboard side of the deck on the anti-rolling system (18m from the sea surface)

[PAR]

Measurement wavelength: 400 - 700 [nm]

[Ultraviolet irradiance]

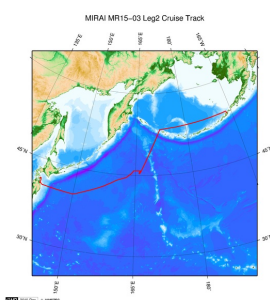
Measurement wavelength: 305, 320, 340, 380 [nm]

Note

File naming rule for PAR_YYYYMMDD.txt.

PAR_ : Fixed as 'PAR_'
YYYY : Recording start Year (UTC)
MM : Recording start month (UTC)
DD : Recording start day (UTC)

Related Information



[Enlarge Image](#)

[MR15-03 Leg2](#)

Ship Name: MIRAI
Period: 2015-10-09 - 2015-10-21
Chief Scientist: Shigeto Nishino (JAMSTEC)
Project Name: [Arctic Ocean Climate System Research]
Proposal ▶ Observational studies on the Arctic Ocean climate and ecosystem variability
Title:

Update History

2017-11-09 An observation data was registered.

2016-04-26

An observation data was registerd.

JAMSTEC

[Site Policy](#)
[Privacy Policy](#)
[Application for Data and Samples](#)
[Data Policy](#)

What's New

[Update History](#)
[Feeds](#)

Lists

[Publication List](#)
[Amount of Public Info.](#)

Data

[Map Search](#)
[Data Tree](#)
[Detailed Search](#)

Information of the Ships

[NATSUSHIMA](#)
[KAIYO](#)
[YOKOSUKA](#)
[MIRAI](#)
[KAIREI](#)
[CHIKYU](#)
[KAIMEI](#)
[SHINSEI MARU](#)
[HAKUHO MARU](#)

Information of the Submersibles

[KAIKO](#)
[SHINKAI 2000](#)
[SHINKAI 6500](#)
[DEEP TOW](#)
[HYPER-DOLPHIN](#)
[URASHIMA](#)
[YOKOSUKA DEEP TOW](#)
[6K Camera DEEP TOW](#)
[6K Sonar DEEP TOW](#)
[KM-ROV](#)
[POWER GRAB SAMPLER \(SHELL\)](#)
[POWER GRAB SAMPLER \(CLOW\)](#)
[BMS](#)

Go to a Cruise Information

Cruise ID:

Go to a Dive Information

Dive ID:

Copyright 2011 Japan Agency for Marine-Earth Science and Technology



JAMSTEC
JAPAN AGENCY FOR MARINE-EARTH SCIENCE AND TECHNOLOGY

国立研究開発法人
海洋研究開発機構

MIRAI MR15-03 Leg2 Sea-surface Photosynthetically Active Radiation (PAR)

Last Modified: 2017-11-09

[ReadMe](#) [Observation Data](#) [Data Format](#)

Cruise ID: [MR15-03 Leg2](#)

Sea-surface Photosynthetically Active Radiation (PAR) Raw

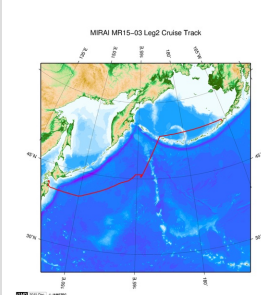
Data Policy: [JAMSTEC](#)

Sea-surface PAR (MR15-01-)

Comma Separated Value

Column No.	Content	Remarks
1	DATE	Year, Month Day [YYYYMMDD]
2	TIME	Hour, Minute, Second [hhmmss]
3	PAR	PAR (Variable length, Floating-point, Exponential Form) [microEinsteins/cm^2/sec]
4	UV(305nm)	Ultraviolet Irradiance;305nm (Variable length, Floating-point, Exponential Form) [microW/cm^2/nm]
5	UV(320nm)	Ultraviolet Irradiance;320nm (Variable length, Floating-point, Exponential Form) [microW/cm^2/nm]
6	UV(340nm)	Ultraviolet Irradiance;340nm (Variable length, Floating-point, Exponential Form) [microW/cm^2/nm]
7	UV(380nm)	Ultraviolet Irradiance;380nm (Variable length, Floating-point, Exponential Form) [microW/cm^2/nm]

Related Information



[Enlarge Image](#)

MR15-03 Leg2

Ship Name: MIRAI

Period: 2015-10-09 - 2015-10-21

Chief Scientist: Shigeto Nishino (JAMSTEC)

Project Name: [Arctic Ocean Climate System Research]

Proposal ▶ Observational studies on the Arctic Ocean climate and ecosystem variability

Title:

Update History

2017-11-09	An observation data was registered.
2016-04-26	An observation data was registered.

JAMSTEC

[Site Policy](#)
[Privacy Policy](#)
[Application for Data and Samples](#)
[Data Policy](#)

What's New

[Update History](#)
[Feeds](#)

Lists

[Publication List](#)
[Amount of Public Info.](#)

Data

[Map Search](#)
[Data Tree](#)
[Detailed Search](#)

Information of the Ships

[NATSUSHIMA](#)
[KAIYO](#)
[YOKOSUKA](#)
[MIRAI](#)
[KAIREI](#)
[CHIKYU](#)
[KAIMEI](#)
[SHINSEI MARU](#)
[HAKUHO MARU](#)

Information of the Submersibles

[KAIKO](#)
[SHINKAI 2000](#)
[SHINKAI 6500](#)
[DEEP TOW](#)
[HYPER-DOLPHIN](#)
[URASHIMA](#)
[YOKOSUKA DEEP TOW](#)
[6K Camera DEEP TOW](#)
[6K Sonar DEEP TOW](#)
[KM-ROV](#)
[POWER GRAB SAMPLER \(SHELL\)](#)
[POWER GRAB SAMPLER \(CLOW\)](#)
[BMS](#)

Go to a Cruise Information

Cruise ID:

Go to a Dive Information

Dive ID:

MIRAI MR15-03 Leg2 Sea-surface Photosynthetically Active Radiation (PAR)

Last Modified: 2017-11-09

[ReadMe](#) [Observation Data](#) [Data Format](#)

Cruise ID: [MR15-03 Leg2](#)

Sea-surface Photosynthetically Active Radiation (PAR) : Raw

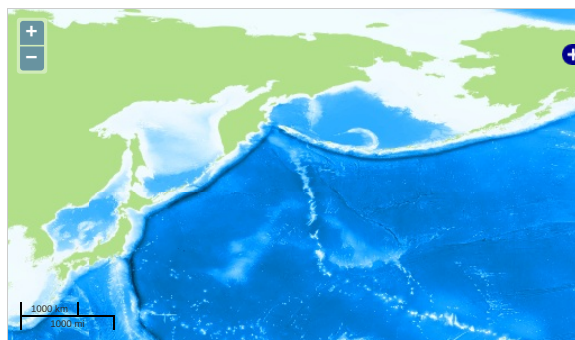
Data Policy: [JAMSTEC](#)

Observation Items:

Science Keywords:

OCEANS > OCEAN OPTICS > PHOTOSYNTHETICALLY ACTIVE RADIATION

Observation Map



... Observation Line ... Navigation ... Observation, Dive Point, Hole

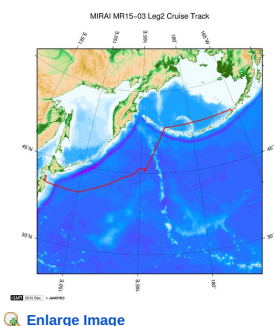
Data List

[Add to Basket](#)

File names

☐ PAR_20151009.txt
☐ PAR_20151010.txt
☐ PAR_20151011.txt
☐ PAR_20151012.txt
☐ PAR_20151013.txt
☐ PAR_20151014.txt
☐ PAR_20151015.txt
☐ PAR_20151016.txt
☐ PAR_20151017.txt
☐ PAR_20151018.txt
☐ PAR_20151019.txt
☐ PAR_20151020.txt
☐ PAR_20151021.txt

Related Information



MR15-03 Leg2

Ship Name: MIRAI

Period: 2015-10-09 - 2015-10-21

Chief Scientist: Shigeto Nishino (JAMSTEC)

Project Name: [Arctic Ocean Climate System Research]

Proposal ▶ Observational studies on the Arctic Ocean climate and ecosystem variability

Title:

Update History

2017-11-09 An observation data was registered.
2016-04-26 An observation data was registered.

JAMSTEC

[Site Policy](#)
[Privacy Policy](#)
[Application for Data and Samples](#)
[Data Policy](#)
[What's New](#)
[Update History](#)

Lists

[Publication List](#)
[Amount of Public Info.](#)
[Data](#)
[Map Search](#)
[Data Tree](#)
[Detailed Search](#)

Information of the Ships

[NATSUSHIMA](#)
[KAIYO](#)
[YOKOSUKA](#)
[MIRAI](#)
[KAIREI](#)
[CHIKYU](#)
[KAIMEI](#)

Information of the Submersibles

[KAIKO](#)
[SHINKAI 2000](#)
[SHINKAI 6500](#)
[DEEP TOW](#)
[HYPER-DOLPHIN](#)
[URASHIMA](#)

Go to a Cruise Information

Cruise ID:

Go to a Dive Information

Dive ID:

Feeds

SHINSEI MARU
HAKUHO MARU

YOKOSUKA DEEP TOW
6K Camera DEEP TOW
6K Sonar DEEP TOW
KM-ROV
POWER GRAB SAMPLER
(SHELL)
POWER GRAB SAMPLER
(CLOW)
BMS

Copyright 2011 Japan Agency for Marine-Earth Science and
Technology



JAMSTEC 国立研究開発法人
海洋研究開発機構
JAPAN AGENCY FOR MARINE-EARTH SCIENCE AND TECHNOLOGY