

MIRAI MR08-06 Leg2 Shipboard Acoustic Doppler Current Profiler (ADCP)

Last Modified: 2012-10-27

ReadMe

Cruise ID: [MR08-06 Leg2](#)

Shipboard Acoustic Doppler Current Profiler (ADCP): Raw

Data Policy: [JAMSTEC](#)

Observation Items: Depth, Absolute velocity (zonal, meridional and vertical)

Science Keywords:

OCEANS > OCEAN CIRCULATION > OCEAN CURRENTS

Cruise Report

http://www.godac.jamstec.go.jp/catalog/data/doc_catalog/media/MR08-06_leg2-3_all.pdf

For Using Data

Principal Investigator

Data Management Office

Use Constraints

See [Terms and Conditions](#) about constrain of use.

Data Citation

See [Terms and Conditions](#) about data citation.

Instrument

Instrument:

Shipboard acoustic doppler current profiler (ADCP) (MR08-02 -)

Instrument:

Shipboard acoustic doppler current profiler (ADCP) (- MR08-E01)

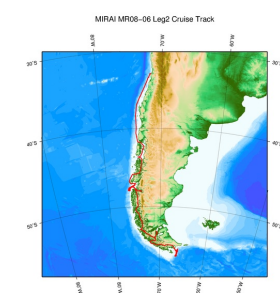


About this data

We have no plan to process the data due to equipment failure etc.

Please refer to the "Contact Us" if you wish to use the raw data.

Related Information



[Enlarge Image](#)

MR08-06 Leg2

Ship Name: MIRAI

Period: 2009-03-14 - 2009-03-30

Chief Scientist: Naomi Harada (JAMSTEC)

Project Name: [Paleoceanography Research, South Pacific Ocean Research Activity 2009]

Update History

2012-10-27 An observation data was registerd.

JAMSTEC

[Site Policy](#)

[Privacy Policy](#)

[Application for Data and Samples](#)

[Data Policy](#)

[What's New](#)

[Update History](#)

[Feeds](#)

Lists

[Publication List](#)

[Amount of Public Info.](#)

[Data](#)

[Map Search](#)

[Data Tree](#)

[Detailed Search](#)

Information of the Ships

[NATSUSHIMA](#)

[KAIYO](#)

[YOKOSUKA](#)

[MIRAI](#)

[KAIREI](#)

[CHIKYU](#)

[KAIMEI](#)

[SHINSEI MARU](#)

[HAKUHO MARU](#)

Information of the Submersibles

[KAIKO](#)

[SHINKAI 2000](#)

[SHINKAI 6500](#)

[DEEP TOW](#)

[HYPER-DOLPHIN](#)

[URASHIMA](#)

[YOKOSUKA DEEP TOW](#)

[6K Camera DEEP TOW](#)

[6K Sonar DEEP TOW](#)

[KM-ROV](#)

[POWER GRAB SAMPLER \(SHELL\)](#)

[POWER GRAB SAMPLER \(CLOW\)](#)

[BMS](#)

Go to a Cruise Information

Cruise ID:

Go to a Dive Information

Dive ID:

MIRAI MR08-06 Leg2 Shipboard Acoustic Doppler Current Profiler (ADCP)

Last Modified: 2012-10-27

ReadMe

Cruise ID: [MR08-06 Leg2](#)

Shipboard Acoustic Doppler Current Profiler (ADCP) Raw

Data Policy: [JAMSTEC](#)

Observation Items: Depth, Absolute velocity (zonal, meridional and vertical)

Science Keywords:

OCEANS > OCEAN CIRCULATION > OCEAN CURRENTS

Cruise Report

http://www.godac.jamstec.go.jp/catalog/data/doc_catalog/media/MR08-06_leg2-3_all.pdf

For Using Data

Principal Investigator

Data Management Office

Use Constraints

See [Terms and Conditions](#) about constrain of use.

Data Citation

See [Terms and Conditions](#) about data citation.

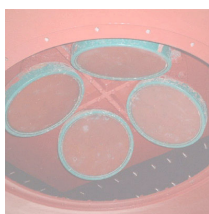
Instrument

Instrument:

Shipboard acoustic doppler current profiler (ADCP) (MR08-02 -)

Instrument:

Shipboard acoustic doppler current profiler (ADCP) (- MR08-E01)

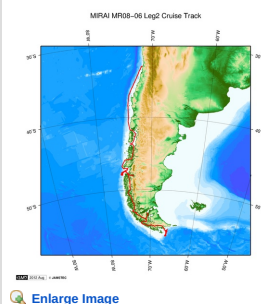


About this data

We have no plan to process the data due to equipment failure etc.

Please refer to the "Contact Us" if you wish to use the raw data.

Related Information



[Enlarge Image](#)

MR08-06 Leg2

Ship Name: MIRAI

Period: 2009-03-14 - 2009-03-30

Chief Scientist: Naomi Harada (JAMSTEC)

Project Name: [Paleoceanography Research, South Pacific Ocean Research Activity 2009]

Update History

2012-10-27 An observation data was registered.

JAMSTEC
Site Policy
Privacy Policy
Application for Data and Samples
Data Policy
What's New
Update History
Feeds

Lists
Publication List
Amount of Public Info.
Data
Map Search
Data Tree
Detailed Search

Information of the Ships
NATSUSHIMA
KAIYO
YOKOSUKA
MIRAI
KAIREI
CHIKYU
KAIMEI
SHINSEI MARU
HAKUHO MARU

Information of the Submersibles
KAIKO
SHINKAI 2000
SHINKAI 6500
DEEP TOW
HYPER-DOLPHIN
URASHIMA
YOKOSUKA DEEP TOW
6K Camera DEEP TOW
6K Sonar DEEP TOW
KM-ROV
POWER GRAB
SAMPLER (SHELL)
POWER GRAB
SAMPLER (CLOW)
BMS

Go to a Cruise Information

Cruise ID:

Go to a Dive Information

Dive ID:

MIRAI MR08-06 Leg2 Shipboard Acoustic Doppler Current Profiler (ADCP)

Last Modified: 2012-10-27

ReadMe

Cruise ID: [MR08-06 Leg2](#)

Shipboard Acoustic Doppler Current Profiler (ADCP): Raw

Data Policy: [JAMSTEC](#)

Observation Items: Depth, Absolute velocity (zonal, meridional and vertical)

Science Keywords:

OCEANS > OCEAN CIRCULATION > OCEAN CURRENTS

Cruise Report

http://www.godac.jamstec.go.jp/catalog/data/doc_catalog/media/MR08-06_leg2-3_all.pdf

For Using Data

Principal Investigator

Data Management Office

Use Constraints

See [Terms and Conditions](#) about constrain of use.

Data Citation

See [Terms and Conditions](#) about data citation.

Instrument

Instrument:

Shipboard acoustic doppler current profiler (ADCP) (MR08-02 -)

Instrument:

Shipboard acoustic doppler current profiler (ADCP) (- MR08-E01)

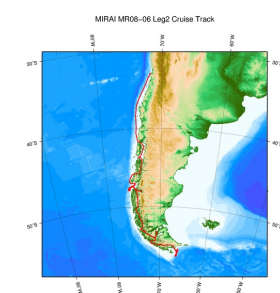


About this data

We have no plan to process the data due to equipment failure etc.

Please refer to the "Contact Us" if you wish to use the raw data.

Related Information



[Enlarge Image](#)

MR08-06 Leg2

Ship Name: MIRAI

Period: 2009-03-14 - 2009-03-30

Chief Scientist: Naomi Harada (JAMSTEC)

Project Name: [Paleoceanography Research, South Pacific Ocean Research Activity 2009]

Update History

2012-10-27 An observation data was registerd.

JAMSTEC

[Site Policy](#)

[Privacy Policy](#)

[Application for Data and Samples](#)

[Data Policy](#)

[What's New](#)

[Update History](#)

[Feeds](#)

Lists

[Publication List](#)

[Amount of Public Info.](#)

[Data](#)

[Map Search](#)

[Data Tree](#)

[Detailed Search](#)

Information of the Ships

[NATSUSHIMA](#)

[KAIYO](#)

[YOKOSUKA](#)

[MIRAI](#)

[KAIREI](#)

[CHIKYU](#)

[KAIMEI](#)

[SHINSEI MARU](#)

[HAKUHO MARU](#)

Information of the Submersibles

[KAIKO](#)

[SHINKAI 2000](#)

[SHINKAI 6500](#)

[DEEP TOW](#)

[HYPER-DOLPHIN](#)

[URASHIMA](#)

[YOKOSUKA DEEP TOW](#)

[6K Camera DEEP TOW](#)

[6K Sonar DEEP TOW](#)

[KM-ROV](#)

[POWER GRAB SAMPLER \(SHELL\)](#)

[POWER GRAB SAMPLER \(CLOW\)](#)

[BMS](#)

Go to a Cruise Information

Cruise ID:

Go to a Dive Information

Dive ID: