

MIRAI MR09-02 Leg2 Doppler Radar

Last Modified: 2016-10-17

ReadMe

Cruise ID: [MR09-02 Leg2](#)

Doppler Radar: Raw

Data Policy: [JAMSTEC](#)

Observation Items: doppler velocity, reflectivity

Science Keywords:

ATMOSPHERE > PRECIPITATION
ATMOSPHERE > CLOUDS
ATMOSPHERE > ATMOSPHERIC WINDS
SPECTRAL/ENGINEERING > RADAR > DOPPLER VELOCITY
SPECTRAL/ENGINEERING > RADAR > RADAR REFLECTIVITY

For Using Data

Principal Investigator

Data Management Office

Use Constraints

See [Terms and Conditions](#) about constrain of use.

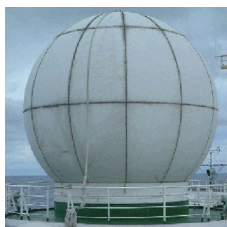
Data Citation

See [Terms and Conditions](#) about data citation.

Instrument

Instrument:

Doppler radar (- MR14-02)

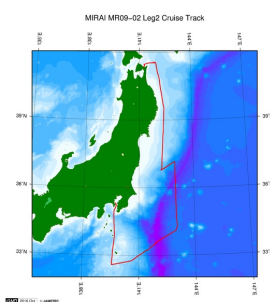


About this data

We have no plan to process the data due to equipment failure etc.

Please refer to the "Contact Us" if you wish to use the raw data.

Related Information



[Enlarge Image](#)

MR09-02 Leg2

Ship Name: MIRAI

Period: 2009-08-17 - 2009-08-23

Chief Scientist: Yosaku Maeda (JAMSTEC)

Update History

2016-10-17 An observation data was registered.

JAMSTEC

[Site Policy](#)
[Privacy Policy](#)
[Application for Data and Samples](#)
[Data Policy](#)

What's New

[Update History](#)
[Feeds](#)

Lists

[Publication List](#)
[Amount of Public Info.](#)

Data

[Map Search](#)
[Data Tree](#)
[Detailed Search](#)

Information of the Ships

[NATSUSHIMA](#)
[KAIYO](#)
[YOKOSUKA](#)
[MIRAI](#)
[KAIREI](#)
[CHIKYU](#)
[KAIMEI](#)
[SHINSEI MARU](#)
[HAKUHO MARU](#)

Information of the Submersibles

[KAIKO](#)
[SHINKAI 2000](#)
[SHINKAI 6500](#)
[DEEP TOW](#)
[HYPER-DOLPHIN](#)
[URASHIMA](#)
[YOKOSUKA DEEP TOW](#)
[6K Camera DEEP TOW](#)
[6K Sonar DEEP TOW](#)
[KM-ROV](#)
[POWER GRAB SAMPLER \(SHELL\)](#)
[POWER GRAB SAMPLER \(CLOW\)](#)
[BMS](#)

Go to a Cruise Information

Cruise ID:

Go to a Dive Information

Dive ID:

MIRAI MR09-02 Leg2 Doppler Radar

Last Modified: 2016-10-17

ReadMe

Cruise ID: [MR09-02 Leg2](#)

Doppler Radar: Raw

Data Policy: [JAMSTEC](#)

Observation Items: doppler velocity, reflectivity

Science Keywords:

ATMOSPHERE	> PRECIPITATION
ATMOSPHERE	> CLOUDS
ATMOSPHERE	> ATMOSPHERIC WINDS
SPECTRAL/ENGINEERING	> RADAR
SPECTRAL/ENGINEERING	> RADAR
SPECTRAL/ENGINEERING	> RADAR
	> DOPPLER VELOCITY
	> RADAR
	REFLECTIVITY

For Using Data

Principal Investigator

Data Management Office

Use Constraints

See [Terms and Conditions](#) about constrain of use.

Data Citation

See [Terms and Conditions](#) about data citation.

Instrument

Instrument:

Doppler radar (- MR14-02)

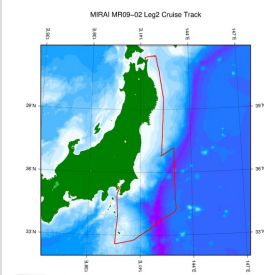


About this data

We have no plan to process the data due to equipment failure etc.

Please refer to the "Contact Us" if you wish to use the raw data.

Related Information



[Enlarge Image](#)

MR09-02 Leg2

Ship Name: MIRAI

Period: 2009-08-17 - 2009-08-23

Chief Scientist: Yosaku Maeda (JAMSTEC)

Update History

2016-10-17	An observation data was registerd.
------------	------------------------------------

JAMSTEC
Site Policy
Privacy Policy
Application for Data and Samples
Data Policy
What's New
Update History
Feeds

Lists
Publication List
Amount of Public Info.

Data
Map Search
Data Tree
Detailed Search

Information of the Ships
NATSUSHIMA
KAIYO
YOKOSUKA
MIRAI
KAIREI
CHIKYU
KAIMEI
SHINSEI MARU
HAKUHO MARU

Information of the Submersibles
KAIKO
SHINKAI 2000
SHINKAI 6500
DEEP TOW
HYPER-DOLPHIN
URASHIMA
YOKOSUKA DEEP TOW
6K Camera DEEP TOW
6K Sonar DEEP TOW
KM-ROV
POWER GRAB
SAMPLER (SHELL)
POWER GRAB
SAMPLER (CLOW)
BMS

Go to a Cruise Information

Cruise ID:

Go to a Dive Information

Dive ID:

MIRAI MR09-02 Leg2 Doppler Radar

Last Modified: 2016-10-17

ReadMe

Cruise ID: [MR09-02 Leg2](#)

Doppler Radar: Raw

Data Policy: [JAMSTEC](#)

Observation Items: doppler velocity, reflectivity

Science Keywords:

ATMOSPHERE > PRECIPITATION
ATMOSPHERE > CLOUDS
ATMOSPHERE > ATMOSPHERIC WINDS
SPECTRAL/ENGINEERING > RADAR > DOPPLER VELOCITY
SPECTRAL/ENGINEERING > RADAR > RADAR REFLECTIVITY

For Using Data

Principal Investigator

Data Management Office

Use Constraints

See [Terms and Conditions](#) about constrain of use.

Data Citation

See [Terms and Conditions](#) about data citation.

Instrument

Instrument:

Doppler radar (- MR14-02)

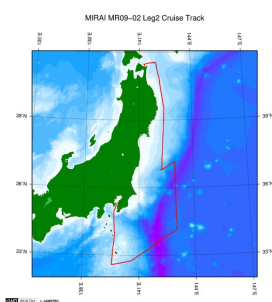


About this data

We have no plan to process the data due to equipment failure etc.

Please refer to the "Contact Us" if you wish to use the raw data.

Related Information



[Enlarge Image](#)

MR09-02 Leg2

Ship Name: MIRAI

Period: 2009-08-17 - 2009-08-23

Chief Scientist: Yosaku Maeda (JAMSTEC)

Update History

2016-10-17 An observation data was registerd.

JAMSTEC

[Site Policy](#)
[Privacy Policy](#)
[Application for Data and Samples](#)
[Data Policy](#)

What's New

[Update History](#)
[Feeds](#)

Lists

[Publication List](#)
[Amount of Public Info.](#)

Data

[Map Search](#)
[Data Tree](#)
[Detailed Search](#)

Information of the Ships

[NATSUSHIMA](#)
[KAIYO](#)
[YOKOSUKA](#)
[MIRAI](#)
[KAIREI](#)
[CHIKYU](#)
[KAIMEI](#)
[SHINSEI MARU](#)
[HAKUHO MARU](#)

Information of the Submersibles

[KAIKO](#)
[SHINKAI 2000](#)
[SHINKAI 6500](#)
[DEEP TOW](#)
[HYPER-DOLPHIN](#)
[URASHIMA](#)
[YOKOSUKA DEEP TOW](#)
[6K Camera DEEP TOW](#)
[6K Sonar DEEP TOW](#)
[KM-ROV](#)
[POWER GRAB SAMPLER \(SHELL\)](#)
[POWER GRAB SAMPLER \(CLOW\)](#)
[BMS](#)

Go to a Cruise Information

Cruise ID:

Go to a Dive Information

Dive ID: