

## MIRAI MR02-K04 Leg1 Gravity

Last Modified: 2019-07-26

[ReadMe](#) [Observation Data](#) [Data Format](#)

Cruise ID: [MR02-K04 Leg1](#)

Gravity: Processed (DMO)-Basic

Data Policy: [JAMSTEC](#)

Observation Items: Absolute gravity

Science Keywords:

OCEANS > MARINE GEOPHYSICS > MARINE GRAVITY FIELD  
SOLID EARTH > GEODETICS/GRAVITY > GRAVITY

### Cruise Report

[http://www.godac.jamstec.go.jp/catalog/data/doc\\_catalog/media/MR02-K04\\_leg1\\_all.pdf](http://www.godac.jamstec.go.jp/catalog/data/doc_catalog/media/MR02-K04_leg1_all.pdf)

#### For Using Data

##### Principal Investigator

Data Management Office

JAMSTEC / BPPT joint cruise in the Indonesian waters.

##### Use Constraints

See [Terms and Conditions](#) about constrain of use.

##### Data Citation

See [Terms and Conditions](#) about data citation.

### Period (UTC)

2002-06-24 21:00 – 2002-07-17 01:13

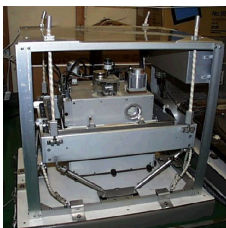
2002-07-17 05:07 – 2002-07-17 16:38

2002-07-21 23:07 – 2002-07-22 05:26

### Instrument

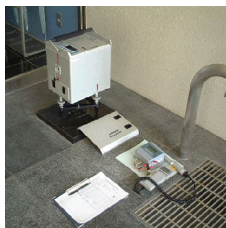
Instrument:

Shipboard gravimeter



Instrument:

Microgravimeter ( - MR11-05 Leg2)



### Overview

The data provided here are absolute gravity data. The absolute gravity data are a combination of relative gravity data measured by the shipboard gravity meter and the absolute gravity data of the ports in departure and arrival. Drift corrections were done before converting into absolute gravity. The absolute gravity values of the ports are referenced to those of the Japan Gravity Standardization Net of the Geographical Survey Institute of Japan.

### Measurement System

#### (1) Shipboard gravity meter

The system consists of two main assemblies; the gyro-stabilized platform including the gravity sensor and the data handling & control system.

Manufacturer : LaCoste & Romberg

Model : S-116

Measuring range : 12,000 mGal

Accuracy : 1.0 mGal

Drift rate : < 3.0 mGal/month

Installation : Gravity meter room

Reference: 「Model "S" Air-Sea Dynamic Gravity Meter SystemII」 INSTRUCTION MANUAL LaCoste and Romberg Gravity Meters, Inc. 2004

#### (2) Portable gravity meter

The portable gravity meter consists of two modules; the data acquisition/control module and the gravity sensor module. The gravity sensor is enclosed in a thermostatically controlled vacuum chamber. The portable gravity meter is used to calculate the absolute gravity of the port with reference to the gravity station of the Japan Gravity Standardization Net of the Geographical Survey Institute of Japan.

Manufacturer : SCINTREX

Model : CG-3M

Measurement range : 7,000 mGal

Standard deviation : 0.05 mGal

Drift rate : < 0.02 mGal/day

Reference: "CG-3M AUTOGRAV AUTOMATED GRAVITY METER OPERATOR MANUAL", SCINTREX

### Absolute gravity in Ports

Date (UTC)	Port	Absolute gravity (mGal)	Sea level (cm)	Draft shipboard (cm)	Absolute gravity at sensor position (mGal)	Reading of shipboard gravity meter (mGal)
2002/06/24 08:31:00	SEKINEHAMA	980371.84	234	625	980372.60	12666.2
2002/08/23 04:30:00	SEKINEHAMA	980371.88	252	615	980372.69	12663.8

\* see [Term description](#)

### Data processing

According to the filter process of the gravity meter system, the gravity data has a time lag of 300 seconds between the measurement and its output. After

adjustment of this lag time, the following corrections and calculations were performed.

(1) Drift correction

$$D = ((Vg - Vgs) - (Age - Ags)) / (Te - Ts)$$

D: Drift value (mGal/day)

Vgs: The shipboard gravity at the start of the cruise (mGal)

Vge: The shipboard gravity at the end of the cruise (mGal)

Ags: The absolute gravity at the shipboard sensor position at the start of the cruise (mGal)

Age: The absolute gravity at the shipboard sensor position at the end of the cruise (mGal)

Ts: The start time of the cruise (day)

Te: The end time of the cruise (day)

(2) Calculation of the absolute gravity

$$G = Ags + (Vg - Vgs) - D * (T - Ts) + E + H * \beta$$

G: The absolute gravity at sea surface (mGal)

Ags: The absolute gravity at the shipboard sensor position at the start of the cruise (mGal)

Vgs: The shipboard gravity at the start of the cruise (mGal)

Vg: The shipboard gravity at the measurement time (mGal)

D: Drift value (mGal/day)

Ts: The start time of the cruise (day)

T: The measurement time (day)

E: Eotvos correction (mGal)

H: Height from sea surface of the shipboard sensor position (m)

$\beta$ : Free-air gradient 0.3086 (mGal/m)

(3) Output of the data

Time (UTC)

Latitude (degree)

Longitude (degree)

Processed absolute gravity (mGal)

Depth (m)

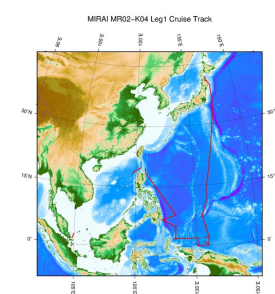
Note

(1) File naming rule: Cruise ID\_p.grv

(2) Sampling rate: ten seconds

(3) If you would like the raw data set, please contact us from "Contact Us" above.

Related Information



[Enlarge Image](#)

**MR02-K04 Leg1**

Ship Name: MIRAI

Period: 2002-06-24 - 2002-07-23

Chief Scientist: Yoshifumi Kuroda (JAMSTEC)

Update History

2019-07-26	An observation data was registered.
2019-07-25	An observation data was registered.
2018-07-14	An observation data was registered.
2016-10-17	An observation data was registered.

JAMSTEC

[Site Policy](#)

[Privacy Policy](#)

[Application for Data and Samples](#)

[Data Policy](#)

[What's New](#)

[Update History](#)

[Feeds](#)

Lists

[Publication List](#)

[Amount of Public Info.](#)

Data

[Map Search](#)

[Data Tree](#)

[Detailed Search](#)

Information of the Ships

NATSUSHIMA

KAIYO

YOKOSUKA

MIRAI

KAIREI

CHIKYU

KAIMEI

SHINSEI MARU

HAKUHO MARU

Information of the Submersibles

KAIKO

SHINKAI 2000

SHINKAI 6500

DEEP TOW

HYPER-DOLPHIN

URASHIMA

YOKOSUKA DEEP TOW

6K Camera DEEP TOW

6K Sonar DEEP TOW

KM-ROV

POWER GRAB SAMPLER

(SHELL)

POWER GRAB SAMPLER

(CLOW)

BMS

Go to a Cruise Information

Cruise ID:

Go to a Dive Information

Dive ID:



## MIRAI MR02-K04 Leg1 Gravity

Last Modified: 2019-07-26

[ReadMe](#) [Observation Data](#) [Data Format](#)

Cruise ID: [MR02-K04 Leg1](#)

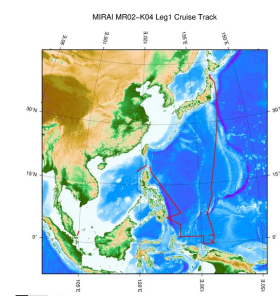
Gravity: Processed (DMO)-Basic

Data Policy: [JAMSTEC](#)

### Gravity Processed

No.	Column	Content	Format	Unit	Remarks
1	1 - 8	Date	i4,i2,i2		YYYYMMDD (UTC)
2	10 -15	Time	i2,i2,i2		hhmmss (UTC)
3	17 -25	Latitude	f9.5	degree	Latitude (degree) ; positive in north, negative in south
4	27 -36	Longitude	f10.5	degree	Longitude (degree) ; positive in east, negative in west
5	39 -46	Gravity	f8.1	mGal	
6	48 -52	Depth	i5	m	

### Related Information



[Enlarge Image](#)

#### MR02-K04 Leg1

Ship Name: MIRAI

Period: 2002-06-24 - 2002-07-23

Chief Scientist: Yoshifumi Kuroda (JAMSTEC)

### Update History

2019-07-26	An observation data was registerd.
2019-07-25	An observation data was registerd.
2018-07-14	An observation data was registerd.
2016-10-17	An observation data was registerd.

#### JAMSTEC

[Site Policy](#)  
[Privacy Policy](#)  
[Application for Data and Samples](#)  
[Data Policy](#)

[What's New](#)  
[Update History](#)  
[Feeds](#)

#### Lists

[Publication List](#)  
[Amount of Public Info.](#)

#### Data

[Map Search](#)  
[Data Tree](#)  
[Detailed Search](#)

#### Information of the Ships

NATSUSHIMA  
KAIYO  
YOKOSUKA  
MIRAI  
KAIREI  
CHIKYU  
KAIMEI  
SHINSEI MARU  
HAKUHO MARU

#### Information of the Submersibles

KAIKO  
SHINKAI 2000  
SHINKAI 6500  
DEEP TOW  
HYPER-DOLPHIN  
URASHIMA  
YOKOSUKA DEEP TOW  
6K Camera DEEP TOW  
6K Sonar DEEP TOW  
KM-ROV  
POWER GRAB SAMPLER (SHELL)  
POWER GRAB SAMPLER (CLOW)  
BMS

#### Go to a Cruise Information

Cruise ID:

#### Go to a Dive Information

Dive ID:

## MIRAI MR02-K04 Leg1 Gravity

Last Modified: 2019-07-26

[ReadMe](#) [Observation Data](#) [Data Format](#)

Cruise ID: **MR02-K04 Leg1**

Gravity: Processed (DMO)-Basic

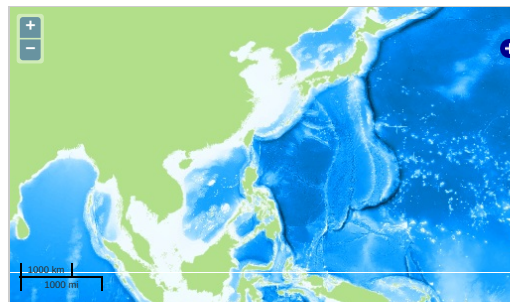
Data Policy: **JAMSTEC**

Observation Items: Absolute gravity

Science Keywords:

OCEANS > MARINE GEOPHYSICS > MARINE GRAVITY FIELD  
SOLID EARTH > GEODETICS/GRAVITY > GRAVITY

### Observation Map



— ... Observation Line — ... Navigation ● ... Observation, Dive Point, Hole

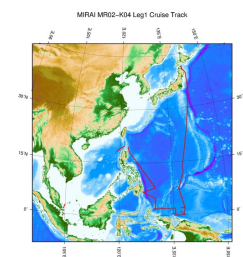
Imagery reproduced from ...

### Data List

File names

☐ MR02-K04\_leg1\_p.grv

### Related Information



[Enlarge Image](#)

#### MR02-K04 Leg1

Ship Name: MIRAI

Period: 2002-06-24 - 2002-07-23

Chief Scientist: Yoshitumi Kuroda (JAMSTEC)

### Update History

2019-07-26	An observation data was registered.
2019-07-25	An observation data was registered.
2018-07-14	An observation data was registered.
2016-10-17	An observation data was registered.

#### JAMSTEC

[Site Policy](#)  
[Privacy Policy](#)  
[Application for Data and Samples](#)  
[Data Policy](#)

#### What's New

[Update History](#)  
[Feeds](#)

#### Lists

[Publication List](#)  
[Amount of Public Info.](#)

#### Data

[Map Search](#)  
[Data Tree](#)  
[Detailed Search](#)

#### Information of the Ships

NATSUSHIMA  
KAIYO  
YOKOSUKA  
MIRAI  
KAIREI  
CHIKYU  
KAIMEI  
SHINSEI MARU  
HAKUHO MARU

#### Information of the Submersibles

KAIKO  
SHINKAI 2000  
SHINKAI 6500  
DEEP TOW  
HYPER-DOLPHIN  
URASHIMA  
YOKOSUKA DEEP TOW  
6K Camera DEEP TOW  
6K Sonar DEEP TOW  
KM-ROV  
POWER GRAB SAMPLER (SHELL)  
POWER GRAB SAMPLER (CLOW)  
BMS

#### Go to a Cruise Information

Cruise ID:

#### Go to a Dive Information

Dive ID: