

## MIRAI MR07-07 Leg2 Shipboard Three Component Magnetometer (STCM)

Last Modified: 2019-06-22

[ReadMe](#) [Observation Data](#) [Data Format](#)

Cruise ID: [MR07-07 Leg2](#)

Shipboard Three Component Magnetometer (STCM): Processed (DMO)-Corrected

Data Policy: [JAMSTEC](#)

Observation Items: X, Y and Z component of geomagnetic field anomaly, Absolute value of geomagnetic field anomaly

Science Keywords:

OCEANS > MARINE GEOPHYSICS > MARINE MAGNETICS  
SOLID EARTH > GEOMAGNETISM

### Cruise Report

[http://www.godac.jamstec.go.jp/catalog/data/doc\\_catalog/media/MR07-07\\_leg2-3\\_all.pdf](http://www.godac.jamstec.go.jp/catalog/data/doc_catalog/media/MR07-07_leg2-3_all.pdf)

#### For Using Data

##### Principal Investigator

Data Management Office

JAMSTEC / BPPT joint cruise in the Indonesian waters.

##### Use Constraints

See [Terms and Conditions](#) about constrain of use.

##### Data Citation

See [Terms and Conditions](#) about data citation.

### Period (UTC)

2008-02-01 22:36 – 2008-02-02 08:00

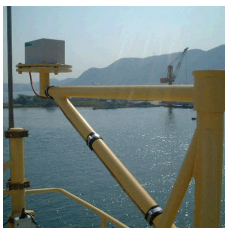
2008-02-05 06:35 – 2008-02-11 16:00

2008-02-13 16:05 – 2008-02-14 08:00

### Instrument

Instrument:

Three component magnetometer



### Overview

The data provided is for corrected three component geomagnetic field anomalies. Three-axes flux-gate sensors with ring-cored coils were fixed on the roof of the bridge.

They measure the following items :

h-component : along track line component, positive for the bow direction pitch.

s-component : across track line component, positive for the starboard side roll.

v-component : vertical component, positive for the downward direction.

The effect of ship motion was eliminated by roll and pitch data which was provided by a tilt sensor. The apparent magnetic influence can be detected through a "Figure of 8 turn"(a pair of clockwise and anti-clockwise turns) on each cruise. If no Figure of 8 turn on the cruise was completed, the latest Figure of 8 turn from the previous cruise was applied. As a quality control, data of low reliability was removed (see Data processing for quality control criteria). Synthetic geomagnetic field values were calculated from IGRF models.

### Measurement System

#### (1) Magnetometer

Manufacturer : Tierra Technica Ltd.

Type : SFG1214

Measurement range :  $\pm 100,000$  nT

Accuracy : less than 100 nT

Resolution : 1 nT

Location : Dry Laboratory

#### (2) Magnetic Sensor

Manufacturer : Tierra Technica Ltd.

Form : flux-gate sensors with ring-cored coils

Location : Foremast

#### (3) Attitude sensor and Gyro compass

Manufacturer : IXBLUE

Type : PHINS

Accuracy(Roll, Pitch) : 0.01 degree

Accuracy(Gyro) : 0.01 degree \*Secant(Lat.)

Location : In the doppler radar dome

### Duration of the Figure of 8 turn

In MR07-06\_leg1 cruise

Date (UTC)

2007/10/17 15:09:00 - 2007/10/17 15:29:00

2007/10/18 12:00:00 - 2007/10/18 12:00:00

2007/11/09 12:06:00 - 2007/11/09 12:24:00

#### Data processing

The following corrections and calculations were performed.

(1) Ship magnetization correction

$$Hob = ARPYF + Hp \text{ ---(i)}$$

Hob: Observed magnetic field vector (Ship coordinates)

A: Effect of induced magnetization of the ship

R: Matrix of rotation due to the roll

P: Matrix of rotation due to the pitch

Y: Matrix of rotation due to the heading

F: Geomagnetic field vector

Hp: Ship's permanent magnetic moment

Following the equation(i), we calculate the geomagnetic field F.

$$RPYF = BHob + Hbp \text{ ---(ii)}$$

B: coefficient of Figure of 8 turn

Hbp: Permanent magnetic field vector of the ship

Reference: Isezaki,N., A new shipboard three-component magnetometer, GEOPHYSICS. VOL.51,NO10(1986);P1992-1998

(2) International Geomagnetic Reference Field (IGRF)

Synthetic geomagnetic field values are calculated from IGRF 11th Generation models by using navigation data ; latitude, longitude and date.

Reference: IAGA Division V-MOD Geomagnetic Field Modeling[<http://www.ngdc.noaa.gov/IAGA/vmod/igrf.html>]

(3) Calculation of the geomagnetic field anomaly

$$An = F - Figrf$$

An: Geomagnetic field anomaly vector

F: Geomagnetic field vector

Figrf: Synthetic geomagnetic field vector from IGRF

(4) Quality control of data

Following criteria were used for removal of data of low reliability:

- Time error (inversion of time, continuation of same timestamps)
- Summation of the difference of heading by one second exceeding 20 degree per 5 minutes
- Ground speed of the ship below 3knot or exceeding 20knot
- X, Y, or Z component of geomagnetic field anomaly exceeding  $\pm 4000\text{nT}$

(5) Filtering of the geomagnetic field anomaly

Due to the residual undulation of the ship, a 120 second length Gaussian filter was applied for each component of the geomagnetic field anomaly data.

(6) Output of the data

Time (UTC)

Latitude (degree)

Longitude (degree)

X: Northward (positive on the north) component of geomagnetic field anomaly (nT)

Y: Eastward (positive on the east) component of geomagnetic field anomaly (nT)

Z: Vertical (positive for downward) component of geomagnetic field anomaly (nT)

T: Absolute value of geomagnetic field anomaly (nT)

#### Coefficient of the Figure of 8 turn and Permanent magnetic field vector of the ship

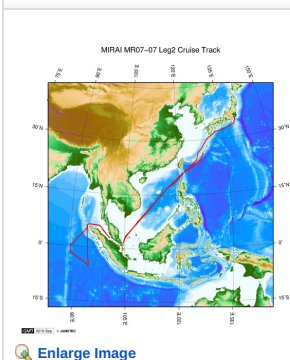
This coefficient was calculated from the Figure of 8 turn (see above)

	0.9933	0.0309	0.0321		2098.8666
B=	-0.0345	1.0586	-0.0073	Hbp=	-63.2468
	0.0403	0.0057	0.9519		1579.6539

#### Note

- (1) File naming rule: Cruise\_ID\_corr.stcm
- (2) Sampling rate: 10 seconds
- (3) Geodetic system: WGS84
- (4) If you would like the raw data set, please contact us from "Contact Us" above.

#### Related Information



#### MR07-07 Leg2

Ship Name: MIRAI  
Period: 2008-01-26 - 2008-02-25  
Chief Scientist: Hideaki Hase (JAMSTEC)  
Project Name: [Tropical Ocean Climate Study (TOCS)]

#### Update History

2019-06-22 An observation data was registerd.

2018-04-18  
2016-10-11

An observation data was registerd.  
An observation data was registerd.

#### JAMSTEC

[Site Policy](#)  
[Privacy Policy](#)  
[Application for Data and Samples](#)  
[Data Policy](#)  
  
[What's New](#)  
[Update History](#)  
[Feeds](#)

#### Lists

[Publication List](#)  
[Amount of Public Info.](#)  
  
**Data**  
[Map Search](#)  
[Data Tree](#)  
[Detailed Search](#)

#### Information of the Ships

[NATSUSHIMA](#)  
[KAIYO](#)  
[YOKOSUKA](#)  
[MIRAI](#)  
[KAIREI](#)  
[CHIKYU](#)  
[KAIMEI](#)  
[SHINSEI MARU](#)  
[HAKUHO MARU](#)

#### Information of the Submersibles

[KAIKO](#)  
[SHINKAI 2000](#)  
[SHINKAI 6500](#)  
[DEEP TOW](#)  
[HYPER-DOLPHIN](#)  
[URASHIMA](#)  
[YOKOSUKA DEEP TOW](#)  
[6K Camera DEEP TOW](#)  
[6K Sonar DEEP TOW](#)  
[KM-ROV](#)  
[POWER GRAB SAMPLER \(SHELL\)](#)  
[POWER GRAB SAMPLER \(CLOW\)](#)  
[BMS](#)

#### Go to a Cruise Information

Cruise ID:

#### Go to a Dive Information

Dive ID:

Copyright 2011 Japan Agency for Marine-Earth Science and Technology



**JAMSTEC**

国立研究開発法人  
海洋研究開発機構

JAPAN AGENCY FOR MARINE-EARTH SCIENCE AND TECHNOLOGY

## MIRAI MR07-07 Leg2 Shipboard Three Component Magnetometer (STCM)

Last Modified: 2019-06-22

[ReadMe](#) [Observation Data](#) [Data Format](#)

Cruise ID: [MR07-07 Leg2](#)

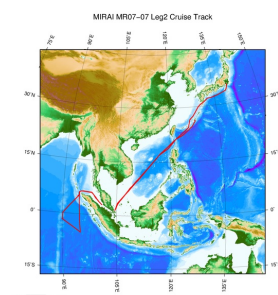
Shipboard Three Component Magnetometer (STCM): Processed (DMO)-Corrected

Data Policy: [JAMSTEC](#)

### STCM Corrected

No.	Column	Content	Format	Unit	Remarks
1	1 - 8	Date	i4,i2,i2		YYYYMMDD (UTC)
2	10 -15	Time	i2,i2,i2		hhmmss (UTC)
3	17 -25	Latitude	f9.5	degree	No sign for the northern hemisphere. Negative for the southern hemisphere.
4	27 -36	Longitude	f10.5	degree	No sign for eastern hemisphere. Negative for the western hemisphere.
5	38 -43	X component of geomagnetic field anomaly	f6.0	nT	Positive on the north
6	45 -50	Y component of geomagnetic field anomaly	f6.0	nT	Positive on the east
7	52 -57	Z component of geomagnetic field anomaly	f6.0	nT	Positive for downward
8	59 -64	Absolute value of geomagnetic field anomaly	f6.0	nT	

### Related Information



[Enlarge Image](#)

#### MR07-07 Leg2

Ship Name: MIRAI

Period: 2008-01-26 - 2008-02-25

Chief Scientist: Hideaki Hase (JAMSTEC)

Project Name: [Tropical Ocean Climate Study (TOCS)]

### Update History

2019-06-22	An observation data was registerd.
2018-04-18	An observation data was registerd.
2016-10-11	An observation data was registerd.

#### JAMSTEC

[Site Policy](#)

[Privacy Policy](#)

[Application for Data and Samples](#)

[Data Policy](#)

[What's New](#)

[Update History](#)

[Feeds](#)

#### Lists

[Publication List](#)

[Amount of Public Info.](#)

[Data](#)

[Map Search](#)

[Data Tree](#)

[Detailed Search](#)

#### Information of the Ships

[NATSUSHIMA](#)

[KAIYO](#)

[YOKOSUKA](#)

[MIRAI](#)

[KAIREI](#)

[CHIKYU](#)

[KAIMEI](#)

[SHINSEI MARU](#)

[HAKUHO MARU](#)

#### Information of the Submersibles

[KAIKO](#)

[SHINKAI 2000](#)

[SHINKAI 6500](#)

[DEEP TOW](#)

[HYPER-DOLPHIN](#)

[URASHIMA](#)

[YOKOSUKA DEEP TOW](#)

[6K Camera DEEP TOW](#)

[6K Sonar DEEP TOW](#)

[KM-ROV](#)

[POWER GRAB SAMPLER \(SHELL\)](#)

[POWER GRAB SAMPLER \(CLOW\)](#)

[BMS](#)

#### Go to a Cruise Information

Cruise ID:

#### Go to a Dive Information

Dive ID:

## MIRAI MR07-07 Leg2 Shipboard Three Component Magnetometer (STCM)

Last Modified: 2019-06-22

[ReadMe](#) [Observation Data](#) [Data Format](#)

Cruise ID: **MR07-07 Leg2**

Shipboard Three Component Magnetometer (STCM): Processed (DMO)-Corrected

Data Policy: **JAMSTEC**

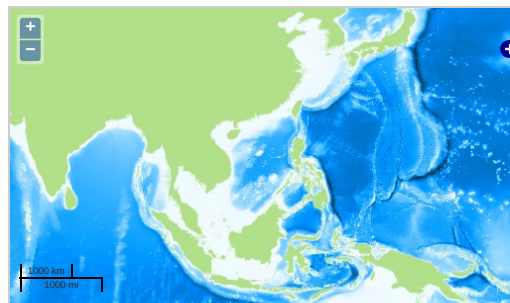
Observation Items: X, Y and Z component of geomagnetic field anomaly, Absolute value of geomagnetic field anomaly

Science Keywords:

OCEANS > MARINE GEOPHYSICS > MARINE  
MAGNETICS

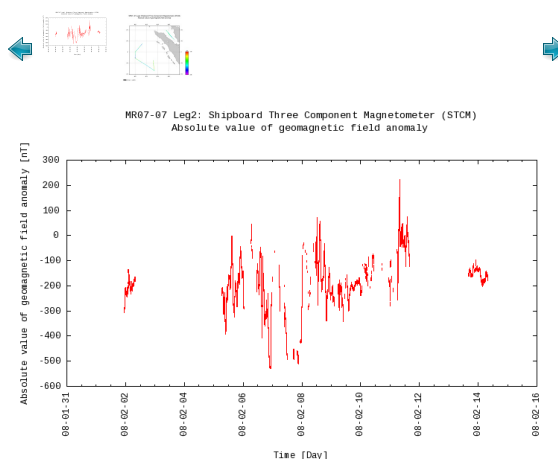
SOLID EARTH > GEOMAGNETISM

### Observation Map



... Observation Line ... Navigation ... Observation, Dive Point, Hole

### Figures



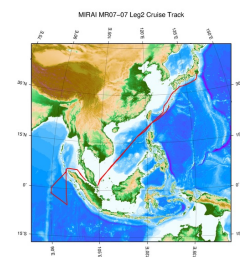
### Data List

[Add to Basket](#)

File names

☐ MR07-07\_leg2\_corr.stcm

### Related Information



[Enlarge Image](#)

#### MR07-07 Leg2

Ship Name: MIRAI

Period: 2008-01-26 - 2008-02-25

Chief Scientist: Hideaki Hase (JAMSTEC)

Project Name: [Tropical Ocean Climate Study (TOCS)]

### Update History

2019-06-22	An observation data was registered.
2018-04-18	An observation data was registered.
2016-10-11	An observation data was registered.

[Privacy Policy](#)  
[Application for Data and Samples](#)  
[Data Policy](#)  
**What's New**  
[Update History](#)  
[Feeds](#)

[Amount of Public Info.](#)  
**Data**  
[Map Search](#)  
[Data Tree](#)  
[Detailed Search](#)

[KAIYO](#)  
[YOKOSUKA](#)  
[MIRAI](#)  
[KAIREI](#)  
[CHIKYU](#)  
[KAIMEI](#)  
[SHINSEI MARU](#)  
[HAKUHO MARU](#)

[KAIKO](#)  
[SHINKAI 2000](#)  
[SHINKAI 6500](#)  
[DEEP TOW](#)  
[HYPER-DOLPHIN](#)  
[URASHIMA](#)  
[YOKOSUKA DEEP TOW](#)  
[6K Camera DEEP TOW](#)  
[6K Sonar DEEP TOW](#)  
[KM-ROV](#)  
[POWER GRAB SAMPLER \(SHELL\)](#)  
[POWER GRAB SAMPLER \(CLOW\)](#)  
[BMS](#)

Cruise ID:

[Go to a Dive Information](#)

Dive ID:

