

MIRAI MR12-02 Leg2 Bottle Sampling Water Chemical Analysis

Last Modified: 2018-01-25

[ReadMe](#) [Observation Data](#) [Data Format](#) [Quality Information](#)

Cruise ID: [MR12-02 Leg2](#)

Bottle Sampling Water Chemical Analysis: Processed (PI)

Data Policy: [JAMSTEC](#)

Observation Items: Temperature, Salinity, Dissolved oxygen, Chlorophyll, Silicate, Nitrate, Nitrite, Phosphate, Ammonia, Total inorganic carbon, Alkalinity, pH, DOC, Potential temperature, Density

Science Keywords:

OCEANS > OCEAN CHEMISTRY > AMMONIA
OCEANS > OCEAN CHEMISTRY > INORGANIC CARBON
OCEANS > OCEAN CHEMISTRY > NITRITE
OCEANS > OCEAN CHEMISTRY > NITRATE
OCEANS > OCEAN CHEMISTRY > NUTRIENTS
OCEANS > OCEAN CHEMISTRY > OXYGEN
OCEANS > OCEAN CHEMISTRY > pH
OCEANS > OCEAN CHEMISTRY > PHOSPHATE
OCEANS > OCEAN CHEMISTRY > SILICATE
OCEANS > OCEAN CHEMISTRY > SALINITY
OCEANS > OCEAN CHEMISTRY > CHLOROPHYLL
OCEANS > OCEAN TEMPERATURE > WATER TEMPERATURE
OCEANS > SALINITY/DENSITY > SALINITY
OCEANS > OCEAN TEMPERATURE > SEA SURFACE TEMPERATURE
OCEANS > OCEAN CHEMISTRY > ALKALINITY
OCEANS > OCEAN CHEMISTRY > CARBON
OCEANS > OCEAN TEMPERATURE > POTENTIAL TEMPERATURE

Cruise Report

http://www.godac.jamstec.go.jp/catalog/data/doc_catalog/media/MR12-02_leg1-2_all.pdf

For Using Data

Principal Investigator

CTDTMP : Masahide Wakita/Hiroshi Uchida (JAMSTEC)
CTDSAL : Masahide Wakita/Hiroshi Uchida (JAMSTEC)
SALNTY : Masahide Wakita (JAMSTEC)
OXYGEN : Masahide Wakita (JAMSTEC)
CHLORA : Kazuhiko Matsumoto (JAMSTEC)
CHLWELSH : Kazuhiko Matsumoto (JAMSTEC)
SILCAT : Michio Aoyama (Meteorological Research Institute)/Masahide Wakita (JAMSTEC)
NITRAT : Michio Aoyama (Meteorological Research Institute)/Masahide Wakita (JAMSTEC)
NITRIT : Michio Aoyama (Meteorological Research Institute)/Masahide Wakita (JAMSTEC)
PHSPHT : Michio Aoyama (Meteorological Research Institute)/Masahide Wakita (JAMSTEC)
NH4 : Michio Aoyama (Meteorological Research Institute)/Masahide Wakita (JAMSTEC)
TCARBN : Masahide Wakita (JAMSTEC)
ALKALI : Masahide Wakita (JAMSTEC)
PH : Masahide Wakita (JAMSTEC)
DOC : Masahide Wakita (JAMSTEC)

Use Constraints

See [Terms and Conditions](#) about constrain of use.

Data Citation

See [Terms and Conditions](#) about data citation.

Instrument

Instrument:

Salinity measurement system



Instrument:

Nutrient analyzer(5ch) (MR09-02 -)



Instrument:

Total dissolved inorganic carbon measurement system (MR11-05 Leg1 -)



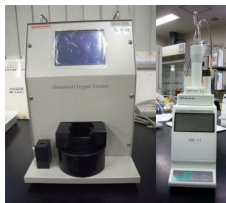
Instrument:

pH meter (MR02-K03 -)



Instrument:

Titration for DO Dissolved oxygen titration equipment (MR11-06 -)



Instrument:

Fluorometer (TURNER DESIGNS)



Notice

• Temperature data measured by a mercury thermometer is listed in CTDTMP column at SAMPNO 0 which means sampled by bucket. Please notice that this

data is different from other data in format (f9.1) and instrument.

Information on CTD data

(1) Temperature sensor

Model: SBE03, Sea-Bird Electronics, Inc.
Measurement range: -5.0 to +35degC
Accuracy: 0.001degC
Resolution: 0.0002degC

(2) Salinity sensor

Model: SBE04, Sea-Bird Electronics, Inc.
Measurement range: 0.0 to 7S/m
Accuracy: 0.0003S/m
Resolution: 0.00004S/m

(3) Pressure sensor

Model: SBE9plus, Sea-Bird Electronics, Inc.
Measurement range: up to 10500m
Accuracy: 0.015%F.S.
Resolution: 0.001%F.S.

Information on Chemical and Biological data

1. Dissolved Oxygen

(1) Instruments :

Burette: APB-510 and APB-620 (Kyoto Electronic Co. Ltd.) / 10 cm³ of titration vessel
Detector : Automatic photometric titrator DOT-01X (Kimoto Electronic Co. Ltd)
Software : DOT_Terminal Ver.1.2.0

(2)Methods: Winkler method

(3)Precision: Standard deviation 0.14 μmol kg⁻¹

(4)Reference Material/Calibration: CSK standard of potassium iodate Lot EPJ3885

2. Salinity

(1)Instruments: Autosal salinometer model 8400B (Guildline Instruments Ltd.)

(2)Methods: -

(3)Precision: The average of the double conductivity ratio was 1.99976

The standard deviation was 0.00004 (0.0007 in salinity)

(4)Reference Material/Calibration: IAPSO Standard Sea Water batch P154 (Ocean Scientific International Ltd.)

3. Silicate

(1)Instruments: BL TEC K.K QuAAtro 2-HR

(2)Methods: Molybdenum blue method

(3)Precision: C.V. 0.14%

(4)Reference Material/Calibration: RMNS, Silicon standard solution SiO₂ in NaOH 0.5 mol/L CertiPUR® (Merck KGaA)

4. Nitrate

(1)Instruments: BL TEC K.K QuAAtro 2-HR

(2)Methods: Diazotization method (reduced to nitrite by Cd - Cu tube)

(3)Precision: C.V. 0.14%

(4)Reference Material/Calibration: RMNS, potassium nitrate 99.995 suprapur® (Merck KGaA)

5. Nitrite

(1)Instruments: BL TEC K.K QuAAtro 2-HR

(2)Methods: Diazotization method

(3)Precision: C.V. 0.29%

(4)Reference Material/Calibration: RMNS, sodium nitrite (Wako Pure Chemical Industries, Ltd.)

6. Phosphate

(1)Instruments: BL TEC K.K QuAAtro 2-HR

(2)Methods: Molybdenum blue method

(3)Precision: C.V. 0.20%

(4)Reference Material/Calibration: RMNS, potassium dihydrogen phosphate anhydrous 99.995 suprapur® (Merck KGaA)

7. Ammonia

(1)Instruments : BL TEC K.K QuAAtro 2-HR

(2)Methods : Indophenol method

(3)Precision : C.V. 0.40%

(4)Reference Material/Calibration : ammonium sulfate (Wako Pure Chemical Industries, Ltd.)

8. Total inorganic carbon

(1)Instruments: TCO₂ measuring system (Nippon ANS, Inc.) equipped with coulometer Model 3000(Nippon ANS, Inc.)

(2)Methods: coulometry

(3)Precision: average of the differences 0.48μmol kg⁻¹, standard deviation 0.42μmol kg⁻¹

(4)Reference Material/Calibration: -

9. Total alkalinity

(1)Instruments: Spectrophotometric system(Nippon ANS, Inc.).

The system comprises of a spectrophotometer (Carry 50 Scan, Varian)

(2)Methods: Single step acid additional procedure/spectrophotometry

(3)Precision: average of the differences 0.8μmol kg⁻¹, standard deviation of the differences 0.7μmol kg⁻¹

(4)Reference Material/Calibration: -

10. pH

(1)Instruments: pH/Ion meter Radiometer PHM240 (Radiometer Analytical SAS)

(2)Methods: potentiometric methods

(2)Methods: potentiometric method

(3)Precision: The average of differences 0.001 pH unit, the standard deviation of differences 0.001 pH units

(4)Reference Material/Calibration: total hydrogen ion scale

11. Chlorophyll a

(1)Instruments : Fluorophotometer model 10-AU-005 (Turner design)

(2)Methods : Extract in N,N-dimethylformamide / fluorometric determination (Non-acidification method and Acidification method)

(3)Precision : -

(4)Reference Material/Calibration : pure chlorophyll a (Sigma-Aldrich Co.)

12. DOC

(1)Instruments : Shimadzu TOC-V (Shimadzu Co.)

(2)Methods : High temperature catalytic oxidation

(3)Precision : -

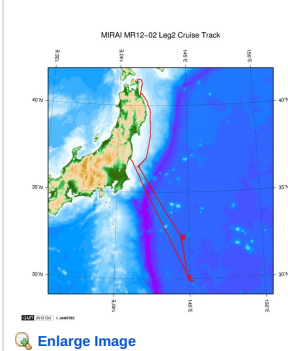
(4)Reference Material/Calibration : -

About this data

There are some description error for nutrient data of this cruise.

Please refer to the errata of the cruise report.

Related Information



MR12-02 Leg2

Ship Name: MIRAI

Period: 2012-06-24 - 2012-07-12

Chief Scientist: Makio Honda (JAMSTEC)

Project Name: [Station S1, Station KEO]

Proposal ▶ Change in material cycles and ecosystem by the climate change and its feedback

Title:

Update History

2018-01-25	An observation data was registerd.
2017-07-28	An observation data was registerd.
2015-05-29	An observation data was registerd.
2015-03-06	An observation data was registerd.
2014-08-30	An observation data was registerd.
2013-09-12	An observation data was registerd.

JAMSTEC

Site Policy

Privacy Policy

Application for Data and

Samples

Data Policy

What's New

Update History

Feeds

Lists

Publication List

Amount of Public Info.

Data

Map Search

Data Tree

Detailed Search

Information of the Ships

NATSUSHIMA

KAIYO

YOKOSUKA

MIRAI

KAIREI

CHIKYU

KAIMEI

SHINSEI MARU

HAKUHO MARU

Information of the Submersibles

KAIKO

SHINKAI 2000

SHINKAI 6500

DEEP TOW

HYPER-DOLPHIN

URASHIMA

YOKOSUKA DEEP TOW

6K Camera DEEP TOW

6K Sonar DEEP TOW

KM-ROV

POWER GRAB SAMPLER

(SHELL)

POWER GRAB SAMPLER

(CLOW)

BMS

Go to a Cruise Information

Cruise ID:

Go

Go to a Dive Information

Dive ID:

Go

Copyright 2011 Japan Agency for Marine-Earth Science and Technology



JAMSTEC

国立研究開発法人
海洋研究開発機構
JAPAN AGENCY FOR MARINE-EARTH SCIENCE AND TECHNOLOGY

MIRAI MR12-02 Leg2 Bottle Sampling Water Chemical Analysis

Last Modified: 2018-01-25

[ReadMe](#) [Observation Data](#) [Data Format](#) [Quality Information](#)

Cruise ID: [MR12-02 Leg2](#)

Bottle Sampling Water Chemical Analysis: Processed (PI)

Data Policy: [JAMSTEC](#)

Exchange Format

Provided in the Exchange Format of CCHDO (CLIVAR and Carbon Hydrographic Data Office).

Please see the following link for details of Exchange Format.

[CCHDO | CLIVAR & Carbon Hydrographic Data Office](#)

Format Information

Column No.	Column Heading Mnemonic	Units Mnemonic	Reporting Precision FORTRAN Format	Comments
1	EXPCODE		A14	Expedition code
2	SECT		A6	For WOCE data the WHP section identifier
3	STNNBR		A6	Station number
4	CASTNO		I3	Cast number
5	SAMPNO		A7	Sample number
6	BTLNBR		A7	Bottle identification number
7	BTLNBR_FLAG_W		I1	Bottle quality flag
8	DATE		I8	Cast date(UTC)
9	TIME	UTC	I4	Cast time (UTC)
10	LATITUDE	DEG	F8.4	LATITUDE
11	LONGITUDE	DEG	F9.4	LONGITUDE
12	DEPTH	M	I5	Reported depth to bottom.
13	CTDDPT	M	F9.1	Depth
14	CTDDPT_FLAG_W		I1	Quality flag for CTD data
15	CTDPRS	DBAR	F9.1	Pressure
16	CTDPRS_FLAG_W		I1	Quality flag for CTD data
17	CTDTMP	ITS-90	F9.4	Temperature
18	CTDTMP_FLAG_W		I1	Quality flag for CTD data
19	CTDSAL	PSS-78	F9.4	CTD Salinity sensor
20	CTDSAL_FLAG_W		I1	Quality flag for CTD data
21	SALNTY	PSS-78	F9.4	Salinity
22	SALNTY_FLAG_W		I1	Quality flags for water samples
23	OXYGEN	UMOL/KG	F9.2	Oxygen
24	OXYGEN_FLAG_W		I1	Quality flags for water samples
25	CHLORA	MG/CUM	F9.2	Chlorophyll a
26	CHLORA_FLAG_W		I1	Quality flags for water samples
27	CHLWELSH	MG/CUM	F9.2	Chlorophyll a (Welschmeyer method)
28	CHLWELSH_W		I1	Quality flags for water samples
29	SILCAT	UMOL/KG	F9.2	Silicate
30	SILCAT_FLAG_W		I1	Quality flags for water samples
31	SILUNC	UMOL/KG	F9.2	Uncertainty of Silicate data
32	NITRAT	UMOL/KG	F9.2	Nitrate
33	NITRAT_FLAG_W		I1	Quality flags for water samples
34	NRAUNC	UMOL/KG	F9.2	Uncertainty of Nitrate data
35	NITRIT	UMOL/KG	F9.2	Nitrite
36	NITRIT_FLAG_W		I1	Quality flags for water samples
37	NRIUNC	UMOL/KG	F9.2	Uncertainty of Nitrite data
38	PHSPHT	UMOL/KG	F9.3	Phosphate
39	PHSPHT_FLAG_W		I1	Quality flags for water samples
40	PHPUNC	UMOL/KG	F9.3	Uncertainty of Phosphate data
41	NH4	UMOL/KG	F9.2	Ammonium
42	NH4_FLAG_W		I1	Quality flags for water samples
43	NH4UNC	UMOL/KG	F9.2	Uncertainty of Ammonium data
44	TCARBN	UMOL/KG	F9.1	Total carbon
45	TCARBN_FLAG_W		I1	Quality flags for water samples
46	ALKALI	UMOL/KG	F9.1	Total alkalinity
47	ALKALI_FLAG_W		I1	Quality flags for water samples
48	PH	-	F9.3	pH
49	PH_FLAG_W		I1	Quality flags for water samples
50	DOC	UMOL/KG	F9.1	Uncertainty of Phosphate data
51	DOC_FLAG_W		I1	Quality flags for water samples
52	THETA	DEG C	F9.4	Potential temperature
53	SIG0	KG/CUM	F9.4	Density

ODV Format

Please see the following link for details of ODV Format and ODV Software.

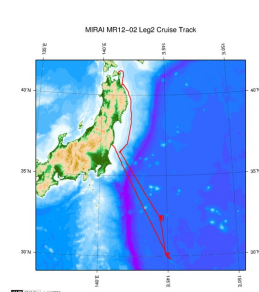
[Ocean Data View \(ODV\)](#)

Format Information

Column No.	Column Heading	Comments
1	Cruise	Cruise Label
2	Station	Station number_Cast number
3	Type	Station type
4	mon/day/yr	Cast date(UTC)
5	hh:mm	Cast time (UTC)
6	Latitude [degrees_north]	LATITUDE

Column No.	Column Heading	Comments
7	Longitude [degrees_east]	LONGITUDE
8	Bot. Depth [m]	Reported depth to bottom.
9	CTDDPT[M]	Depth
10	QF	Quality flag for CTD data
11	CTDPRS[DBAR]	Pressure
12	QF	Quality flag for CTD data
13	CTDTMP[ITS-90]	Temperature
14	QF	Quality flag for CTD data
15	CTDSAL[PSS-78]	CTD Salinity sensor
16	QF	Quality flag for CTD data
17	SALNTY[PSS-78]	Salinity
18	QF	Quality flags for water samples
19	OXYGEN[UMOL/KG]	Oxygen
20	QF	Quality flags for water samples
21	CHLORA[MG/CUM]	Chlorophyll a
22	QF	Quality flags for water samples
23	CHLWELSH[MG/CUM]	Chlorophyll a (Welschmeyer method)
24	QF	Quality flags for water samples
25	SILCAT[UMOL/KG]	Silicate
26	QF	Quality flags for water samples
27	SILUNC	Uncertainty of Silicate data
28	QF	Quality flags for water samples
29	NITRAT[UMOL/KG]	Nitrate
30	QF	Quality flags for water samples
31	NRAUNC	Uncertainty of Nitrate data
32	QF	Quality flags for water samples
33	NITRIT[UMOL/KG]	Nitrite
34	QF	Quality flags for water samples
35	NRIUNC	Uncertainty of Nitrite data
36	QF	Quality flags for water samples
37	PHSPHT[UMOL/KG]	Phosphate
38	QF	Quality flags for water samples
39	PHPUNC	Uncertainty of Phosphate data
40	QF	Quality flags for water samples
41	NH4[UMOL/KG]	Ammonium
42	QF	Quality flags for water samples
43	NH4UNC	Uncertainty of Ammonium data
44	QF	Quality flags for water samples
45	TCARBN[UMOL/KG]	Total carbon
46	QF	Quality flags for water samples
47	ALKAL[UMOL/KG]	Total alkalinity
48	QF	Quality flags for water samples
49	PH	pH
50	QF	Quality flags for water samples
51	DOC[UMOL/KG]	Uncertainty of Phosphate data
52	QF	Quality flags for water samples
53	THETA[DEG C]	Potential temperature
54	QF	Quality flag for CTD data
55	SIG0[KG/CUM]	Density
56	QF	Quality flag for CTD data
57	SAMPNO	Sample number
58	QF	Bottle quality flag

Related Information



[Enlarge Image](#)

MR12-02 Leg2
Ship Name: MIRAI
Period: 2012-06-24 - 2012-07-12
Chief Scientist: Makio Honda (JAMSTEC)
Project Name: [Station S1,Station KEO]
Proposal ▶ Change in material cycles and ecosystem by the climate change and its feedback
Title:

Update History

2018-01-25	An observation data was registered.
2017-07-28	An observation data was registered.
2015-05-29	An observation data was registered.
2015-03-06	An observation data was registered.
2014-08-30	An observation data was registered.
2013-09-12	An observation data was registered.

JAMSTEC
Site Policy
Privacy Policy
Application for Data and Samples
Data Policy
What's New
Update History

Lists
Publication List
Amount of Public Info.

Data
Map Search
Data Tree
Detailed Search

Information of the Ships
NATSUSHIMA
KAIYO
YOKOSUKA
MIRAI
KAIREI
CHIKYU

Information of the Submersibles
KAIKO
SHINKAI 2000
SHINKAI 6500
DEEP TOW
HYPER-DOLPHIN
URASHIMA

Go to a Cruise Information

Cruise ID:

Go to a Dive Information

Space History
Feeds

KAIMEI
SHINSEI MARU
HAKUHO MARU

YOKOSUKA DEEP TOW
6K Camera DEEP TOW
6K Sonar DEEP TOW
KM-ROV
POWER GRAB
SAMPLER (SHELL)
POWER GRAB
SAMPLER (CLOW)
BMS

Dive ID:

Copyright 2011 Japan Agency for Marine-Earth Science and Technology



JAMSTEC
JAPAN AGENCY FOR MARINE-EARTH SCIENCE AND TECHNOLOGY

国立研究開発法人
海洋研究開発機構

MIRAI MR12-02 Leg2 Bottle Sampling Water Chemical Analysis

Last Modified: 2018-01-25

[ReadMe](#) [Observation Data](#) [Data Format](#) [Quality Information](#)

Cruise ID: [MR12-02 Leg2](#)

Bottle Sampling Water Chemical Analysis: Processed (PI)

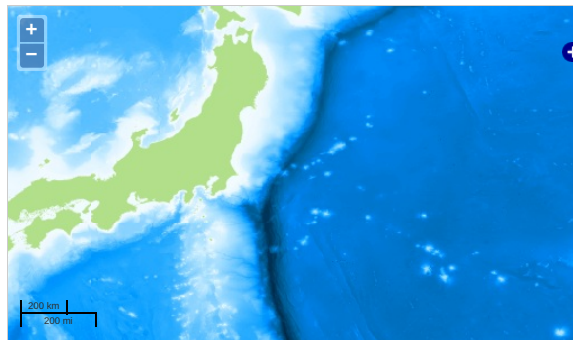
Data Policy: [JAMSTEC](#)

Observation Items: Temperature, Salinity, Dissolved oxygen, Chlorophyll, Silicate, Nitrate, Nitrite, Phosphate, Ammonia, Total inorganic carbon, Alkalinity, pH, DOC, Potential temperature, Density

Science Keywords:

OCEANS > OCEAN CHEMISTRY > AMMONIA
OCEANS > OCEAN CHEMISTRY > INORGANIC CARBON
OCEANS > OCEAN CHEMISTRY > NITRITE
OCEANS > OCEAN CHEMISTRY > NITRATE
OCEANS > OCEAN CHEMISTRY > NUTRIENTS
OCEANS > OCEAN CHEMISTRY > OXYGEN
OCEANS > OCEAN CHEMISTRY > pH
OCEANS > OCEAN CHEMISTRY > PHOSPHATE
OCEANS > OCEAN CHEMISTRY > SILICATE
OCEANS > OCEAN CHEMISTRY > SALINITY
OCEANS > OCEAN CHEMISTRY > CHLOROPHYLL
OCEANS > OCEAN TEMPERATURE > WATER TEMPERATURE
OCEANS > SALINITY/DENSITY > SALINITY
OCEANS > OCEAN TEMPERATURE > SEA SURFACE TEMPERATURE
OCEANS > OCEAN CHEMISTRY > ALKALINITY
OCEANS > OCEAN CHEMISTRY > CARBON
OCEANS > OCEAN TEMPERATURE > POTENTIAL TEMPERATURE

Observation Map



Imagery reproduced from ...

— ... Observation Line — ... Navigation ● ... Observation, Dive Point, Hole

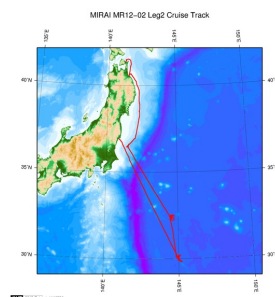
Data List

☐ File names

☐ MR120202_ex_bot.csv

☐ MR120202_odv_bot.txt

Related Information



[Enlarge Image](#)

MR12-02 Leg2

Ship Name: MIRAI

Period: 2012-06-24 - 2012-07-12

Chief Scientist: Makio Honda (JAMSTEC)

Project Name: [Station S1, Station KEO]

Proposal ▶ Change in material cycles and ecosystem by the climate change and its feedback

Title:

Update History

2018-01-25	An observation data was registered.
2017-07-28	An observation data was registered.
2015-05-29	An observation data was registered.
2015-03-06	An observation data was registered.
2014-08-30	An observation data was registered.
2013-09-12	An observation data was registered.

JAMSTEC
Site Policy
Privacy Policy
Application for Data and Samples
Data Policy

What's New
Update History
Feeds

Lists
Publication List
Amount of Public Info.

Data
Map Search
Data Tree
Detailed Search

Information of the Ships
NATSUSHIMA
KAIYO
YOKOSUKA
MIRAI
KAIREI
CHIKYU
KAIMEI
SHINSEI MARU
HAKUHO MARU

Information of the Submersibles
KAIKO
SHINKAI 2000
SHINKAI 6500
DEEP TOW
HYPER-DOLPHIN
URASHIMA
YOKOSUKA DEEP TOW
6K Camera DEEP TOW
6K Sonar DEEP TOW
KM-ROV
POWER GRAB SAMPLER (SHELL)
POWER GRAB SAMPLER (CLOW)
BMS

Go to a Cruise Information

Cruise ID:

Go to a Dive Information

Dive ID:

Copyright 2011 Japan Agency for Marine-Earth Science and Technology



JAMSTEC

国立研究開発法人
海洋研究開発機構
JAPAN AGENCY FOR MARINE EARTH SCIENCE AND TECHNOLOGY