

KAIYO KY13-16 Thermal conductivity

Last Modified: 2016-02-29

[ReadMe](#) [Observation Data](#)

Cruise ID: [KY13-16](#)

Thermal conductivity: Processed (PI)

Data Policy: [JAMSTEC](#)

Observation Items:

Science Keywords:

Data Information

Thermal conductivity measured on the sediment samples

Cruise Report

http://www.godac.jamstec.go.jp/catalog/data/doc_catalog/media/KY13-16_all.pdf

For Using Data

Principal Investigator

Makoto Yamano (Earthquake Research Institute, University of Tokyo)

Use Constraints

See [Terms and Conditions](#) about constrain of use.

Data Citation

See [Terms and Conditions](#) about data citation.

Instrument

Instrument:

Box-probe type thermal conductivity meter

Instrument Information:

Kyoto Electronics Manufacturing Co.

QTM-500



Sample

Sediment

Sample ID

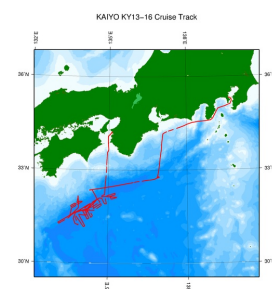
KY13-16 HFPC01, GC01, HFPC03

Data Format

Microsoft Excel file (.xls)

Unit: W/m/K

Related Information



[Enlarge Image](#)

KY13-16

Ship Name: KAIYO

Period: 2013-10-27 - 2013-11-06

Chief Scientist: Makoto Yamano (The University of Tokyo)

Proposal Thermal structure of the Philippine Sea plate subducting along the Nankai Trough and its relation to seismic activity

Update History

2016-02-29 An observation data was registerd.

JAMSTEC

[Site Policy](#)

[Privacy Policy](#)

[Application for Data and Samples](#)

[Data Policy](#)

[What's New](#)

[Update History](#)

[Feeds](#)

Lists

[Publication List](#)

[Amount of Public Info.](#)

Data

[Map Search](#)

[Data Tree](#)

[Detailed Search](#)

Information of the Ships

[NATSUSHIMA](#)

[KAIYO](#)

[YOKOSUKA](#)

[MIRAI](#)

[KAIREI](#)

[CHIKYU](#)

[KAIMEI](#)

[SHINSEI MARU](#)

[HAKUHO MARU](#)

Information of the Submersibles

[KAIKO](#)

[SHINKAI 2000](#)

[SHINKAI 6500](#)

[DEEP TOW](#)

[HYPER-DOLPHIN](#)

[URASHIMA](#)

[YOKOSUKA DEEP TOW](#)

[6K Camera DEEP TOW](#)

Go to a Cruise Information

Cruise ID:

Go to a Dive Information

Dive ID:

6K Sonar DEEP TOW
KM-ROV
POWER GRAB SAMPLER
(SHELL)
POWER GRAB SAMPLER
(CLOW)
BMS

Copyright 2011 Japan Agency for Marine-Earth Science and
Technology



JAMSTEC 国立研究開発法人
海洋研究開発機構
JAPAN AGENCY FOR MARINE EARTH SCIENCE AND TECHNOLOGY

KAIYO KY13-16 Thermal conductivity

Last Modified: 2016-02-29

[ReadMe](#) [Observation Data](#)

Cruise ID: **KY13-16**

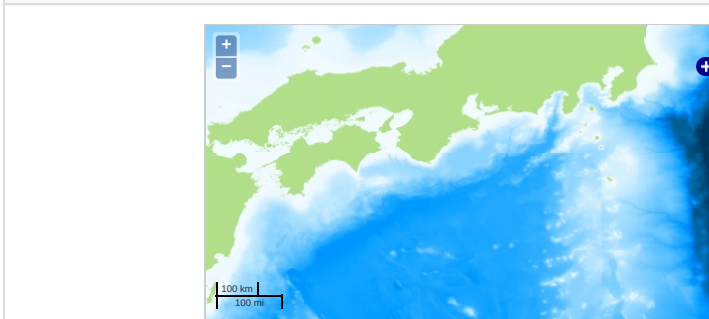
Thermal conductivity: Processed (PI)

Data Policy: [JAMSTEC](#)

Observation Items:

Science Keywords:

Observation Map



Imagery reproduced from ...

... Observation Line ... Navigation ... Observation, Dive Point, Hole

Data List

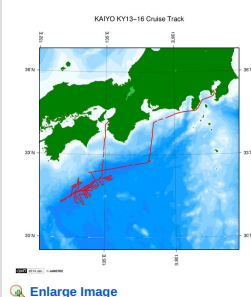
[Add to Basket](#)

☐ File names

☐ KY13-16_SamplingSites.xls

☐ KY13-16_TC.xls

Related Information



[Enlarge Image](#)

KY13-16

Ship Name: KAIYO

Period: 2013-10-27 - 2013-11-06

Chief Scientist: Makoto Yamano (The University of Tokyo)

Proposal Thermal structure of the Philippine Sea plate subducting along the Nankai Trough and its

Title: relation to seismic activity

Update History

2016-02-29 An observation data was registered.

JAMSTEC

[Site Policy](#)

[Privacy Policy](#)

[Application for Data and Samples](#)

[Data Policy](#)

[What's New](#)

[Update History](#)

[Feeds](#)

Lists

[Publication List](#)

[Amount of Public Info.](#)

Data

[Map Search](#)

[Data Tree](#)

[Detailed Search](#)

Information of the Ships

[NATSUSHIMA](#)

[KAIYO](#)

[YOKOSUKA](#)

[MIRAI](#)

[KAIREI](#)

[CHIKYU](#)

[KAIMEI](#)

[SHINSEI MARU](#)

[HAKUHO MARU](#)

Information of the Submersibles

[KAIKO](#)

[SHINKAI 2000](#)

[SHINKAI 6500](#)

[DEEP TOW](#)

[HYPER-DOLPHIN](#)

[URASHIMA](#)

[YOKOSUKA DEEP TOW](#)

[6K Camera DEEP TOW](#)

[6K Sonar DEEP TOW](#)

[KM-ROV](#)

[POWER GRAB SAMPLER \(SHELL\)](#)

[POWER GRAB SAMPLER \(CLOW\)](#)

[BMS](#)

Go to a Cruise Information

Cruise ID:

Go to a Dive Information

Dive ID:

