

## MIRAI MR03-K04 Leg5 Lowered Acoustic Doppler Current Profiler (LADCP)

Last Modified: 2018-05-12

[ReadMe](#) [Observation Data](#)

Cruise ID: [MR03-K04 Leg5](#)

Lowered Acoustic Doppler Current Profiler (LADCP) : Processed (PI)

Data Policy: [JAMSTEC](#)

Observation Items: Depth, Velocity (zonal and meridional)

Science Keywords:

OCEANS > OCEAN CIRCULATION > OCEAN CURRENTS

### Cruise Report

[http://www.godac.jamstec.go.jp/catalog/data/doc\\_catalog/media/MR03-K04\\_leg5\\_all.pdf](http://www.godac.jamstec.go.jp/catalog/data/doc_catalog/media/MR03-K04_leg5_all.pdf)

#### For Using Data

##### Principal Investigator

Yasushi Yoshikawa (JAMSTEC)

##### Use Constraints

See [Terms and Conditions](#) about constrain of use.

##### Data Citation

See [Terms and Conditions](#) about data citation.

### Overview

Velocity data with LADCP

Please see the Data book [Volume1](#), [Volume2](#), [Volume3](#) for details of data.

#### Data process

Vertical profiles of velocity are obtained by the inversion method (Visbeck, 2002).

Visbeck, M. (2002): Deep velocity profiling using Lowered Acoustic Doppler Current Profilers: Bottom track and inverse solutions. J. Atmos. Oceanic Technol., 19, 794-807.

#### Data file

MR03-K04\_leg5\_ladcp.zip

#### File format

Data file contains one line header (meta data) followed by 305 lines data for 142 profiles.

##### Header line

The file is in fixed length, comma separated text file format.

Column 1 : cruise code

Column 2 : WHP-ID

Column 3 : Station name

Column 4 : date (mm/dd/yyyy)

Column 5 : time (hh:mm) in UTC

Column 6 : latitude

Column 7 : longitude

##### Data lines (305 lines)

The file is in fixed length, space separated text file format.

Column 1 : depth

Column 2 : zonal velocity (m/s)

Column 3 : meridional velocity (m/s)

Column 4 : standard error (m/s)

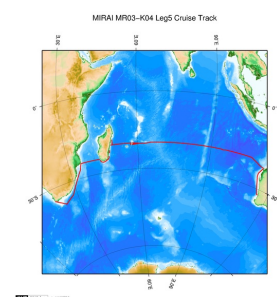
\* The '99.999' in the velocity data means underground and no available.

#### Contact

Yasushi Yoshikawa (JAMSTEC)

yoshikaway@jamstec.go.jp

### Related Information



 [Enlarge Image](#)

#### [MR03-K04 Leg5](#)

Ship Name: MIRAI

Period: 2003-12-09 - 2004-01-24

Chief Scientist: Masao Fukasawa (JAMSTEC)

Project Name: [Blue Earth Global Expedition 2003, POST-WOCE Hydrography]

### Update History

2018-05-12      An observation data was registerd.

2012-12-25

An observation data was registerd.

#### JAMSTEC

[Site Policy](#)  
[Privacy Policy](#)  
[Application for Data and Samples](#)  
[Data Policy](#)

#### What's New

[Update History](#)  
[Feeds](#)

#### Lists

[Publication List](#)  
[Amount of Public Info.](#)

#### Data

[Map Search](#)  
[Data Tree](#)  
[Detailed Search](#)

#### Information of the Ships

[NATSUSHIMA](#)  
[KAIYO](#)  
[YOKOSUKA](#)  
[MIRAI](#)  
[KAIREI](#)  
[CHIKYU](#)  
[KAIMEI](#)  
[SHINSEI MARU](#)  
[HAKUHO MARU](#)

#### Information of the Submersibles

[KAIKO](#)  
[SHINKAI 2000](#)  
[SHINKAI 6500](#)  
[DEEP TOW](#)  
[HYPER-DOLPHIN](#)  
[URASHIMA](#)  
[YOKOSUKA DEEP TOW](#)  
[6K Camera DEEP TOW](#)  
[6K Sonar DEEP TOW](#)  
[KM-ROV](#)  
[POWER GRAB SAMPLER \(SHELL\)](#)  
[POWER GRAB SAMPLER \(CLOW\)](#)  
[BMS](#)

#### Go to a Cruise Information

Cruise ID:

#### Go to a Dive Information

Dive ID:

Copyright 2011 Japan Agency for Marine-Earth Science and Technology



**JAMSTEC**  
JAPAN AGENCY FOR MARINE-EARTH SCIENCE AND TECHNOLOGY

国立研究開発法人  
海洋研究開発機構

## MIRAI MR03-K04 Leg5 Lowered Acoustic Doppler Current Profiler (LADCP)

Last Modified: 2018-05-12

[ReadMe](#) [Observation Data](#)

Cruise ID: [MR03-K04 Leg5](#)

Lowered Acoustic Doppler Current Profiler (LADCP) : Processed (PI)

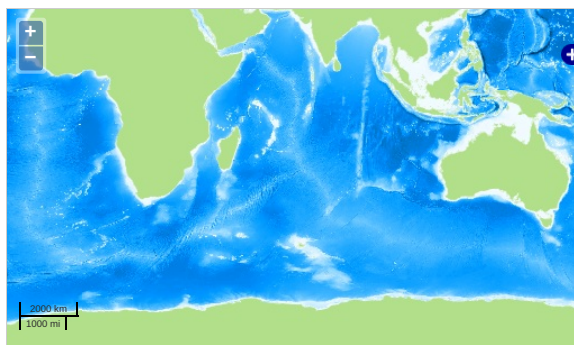
Data Policy: [JAMSTEC](#)

Observation Items: Depth, Velocity (zonal and meridional)

Science Keywords:

OCEANS > OCEAN CIRCULATION > OCEAN CURRENTS

### Observation Map



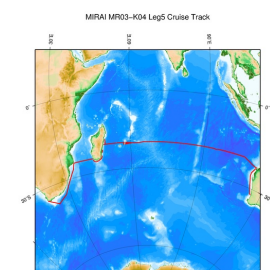
... Observation Line ... Navigation ... Observation, Dive Point, Hole

### Data List

File names

☐ MR03-K04\_leg5\_ladcp.zip

### Related Information



[Enlarge Image](#)

#### MR03-K04 Leg5

Ship Name: MIRAI

Period: 2003-12-09 - 2004-01-24

Chief Scientist: Masao Fukasawa (JAMSTEC)

Project Name: [Blue Earth Global Expedition 2003, POST-WOCE Hydrography]

### Update History

2018-05-12	An observation data was registered.
2012-12-25	An observation data was registered.

#### JAMSTEC

[Site Policy](#)  
[Privacy Policy](#)  
[Application for Data and Samples](#)  
[Data Policy](#)  
  
[What's New](#)  
[Update History](#)  
[Feeds](#)

#### Lists

[Publication List](#)  
[Amount of Public Info.](#)  
  
[Data](#)  
[Map Search](#)  
[Data Tree](#)  
[Detailed Search](#)

#### Information of the Ships

[NATSUSHIMA](#)  
[KAIYO](#)  
[YOKOSUKA](#)  
[MIRAI](#)  
[KAIREI](#)  
[CHIKYU](#)  
[KAIMEI](#)  
[SHINSEI MARU](#)  
[HAKUHO MARU](#)

#### Information of the Submersibles

[KAICO](#)  
[SHINKAI 2000](#)  
[SHINKAI 6500](#)  
[DEEP TOW](#)  
[HYPER-DOLPHIN](#)  
[URASHIMA](#)  
[YOKOSUKA DEEP TOW](#)  
[6K Camera DEEP TOW](#)  
[6K Sonar DEEP TOW](#)  
[KM-ROV](#)  
[POWER GRAB SAMPLER \(SHELL\)](#)  
[POWER GRAB SAMPLER \(CLOW\)](#)  
[BMS](#)

#### Go to a Cruise Information

Cruise ID:

#### Go to a Dive Information

Dive ID: