

## MIRAI MR09-01 Leg2 Shipboard Acoustic Doppler Current Profiler (ADCP)

Last Modified: 2017-04-11

[ReadMe](#) [Observation Data](#)

Cruise ID: [MR09-01 Leg2](#)

Shipboard Acoustic Doppler Current Profiler (ADCP): Processed (PI)

Data Policy: [JAMSTEC](#)

Observation Items: zonal velocity, meridional velocity

Science Keywords:

OCEANS > OCEAN CIRCULATION > OCEAN CURRENTS

Cruise Report

[http://www.godac.jamstec.go.jp/catalog/data/doc\\_catalog/media/MR09-01\\_leg1-3\\_all.pdf](http://www.godac.jamstec.go.jp/catalog/data/doc_catalog/media/MR09-01_leg1-3_all.pdf)

### For Using Data

#### Principal Investigator

Shinya Kouketsu (JAMSTEC)

#### Use Constraints

See [Terms and Conditions](#) about constrain of use.

#### Data Citation

See [Terms and Conditions](#) about data citation.

### Instrument

Instrument:

Shipboard acoustic doppler current profiler (ADCP) (MR08-02 - )



### Overview

Please see the [Data book](#) for details of data.

Velocity data with ADCP

Files:

adcp\_a.txt: velocity data for each stations

adcp\_min.txt: velocity data in each bins (for 3 minutes)

File Format:

Cruise\_Code Station\_Code

Time

Longitude Latitude

Depth(m) U(m/s) V(m/s) W(m/s)

. . . .

. . . .

. . . .

. . . .

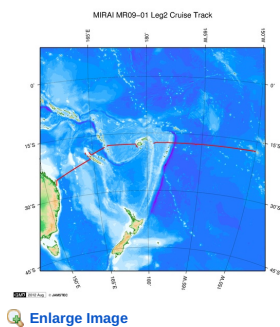
. . . .

Cruise\_Code : cruise code

Station\_Code: station code

Contact: skouketsu@jamstec.go.jp

### Related Information



#### MR09-01 Leg2

Ship Name: MIRAI

Period: 2009-05-21 - 2009-06-19

Chief Scientist: Hiroshi Uchida (JAMSTEC)

Project Name: [POST-WOCE Hydrography, South Pacific Ocean Research Activity 2009]

#### Update History

2017-04-11	An observation data was registerd.
2012-12-06	An observation data was registerd.
2012-09-28	An observation data was registerd.

#### JAMSTEC

Site Policy  
Privacy Policy  
Application for Data and Samples  
Data Policy

What's New  
Update History  
Feeds

#### Lists

Publication List  
Amount of Public Info.

#### Data

Map Search  
Data Tree  
Detailed Search

#### Information of the Ships

NATSUSHIMA  
KAIYO  
YOKOSUKA  
MIRAI  
KAIREI  
CHIKYU  
KAIMEI  
SHINSEI MARU  
HAKUHO MARU

#### Information of the Submersibles

KAIKO  
SHINKAI 2000  
SHINKAI 6500  
DEEP TOW  
HYPER-DOLPHIN  
URASHIMA  
YOKOSUKA DEEP TOW  
6K Camera DEEP TOW  
6K Sonar DEEP TOW  
KM-ROV  
POWER GRAB SAMPLER (SHELL)  
POWER GRAB SAMPLER (CLOW)  
BMS

#### Go to a Cruise Information

Cruise ID:

#### Go to a Dive Information

Dive ID:

Copyright 2011 Japan Agency for Marine-Earth Science and Technology



**JAMSTEC**  
JAPAN AGENCY FOR MARINE-EARTH SCIENCE AND TECHNOLOGY

国立研究開発法人  
海洋研究開発機構

## MIRAI MR09-01 Leg2 Shipboard Acoustic Doppler Current Profiler (ADCP)

Last Modified: 2017-04-11

[ReadMe](#)

[Observation Data](#)

Cruise ID: [MR09-01 Leg2](#)

Shipboard Acoustic Doppler Current Profiler (ADCP) Processed (PI)

Data Policy: [JAMSTEC](#)

Observation Items: zonal velocity, meridional velocity

Science Keywords:

OCEANS > OCEAN CIRCULATION > OCEAN CURRENTS

Cruise Report

[http://www.godac.jamstec.go.jp/catalog/data/doc\\_catalog/media/MR09-01\\_leg1-3\\_all.pdf](http://www.godac.jamstec.go.jp/catalog/data/doc_catalog/media/MR09-01_leg1-3_all.pdf)

### [For Using Data](#)

**Principal Investigator**

Shinya Kouketsu (JAMSTEC)

**Use Constraints**

See [Terms and Conditions](#) about constrain of use.

**Data Citation**

See [Terms and Conditions](#) about data citation.

### [Instrument](#)

Instrument:

Shipboard acoustic doppler current profiler (ADCP) (MR08-02 - )



### [Overview](#)

Please see the [Data book](#) for details of data.

Velocity data with ADCP

Files:

adcp\_a.txt: velocity data for each stations

adcp\_min.txt: velocity data in each bins (for 3 minutes)

File Format:

Cruise\_Code Station\_Code

Time

Longitude Latitude

Depth(m) U(m/s) V(m/s) W(m/s)

```

. . . .
. . . .
. . . .
. . . .
. . . .

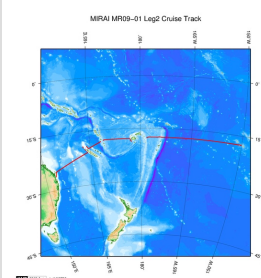
```

Cruise\_Code : cruise code

Station\_Code : station code

Contact: skouketsu@jamstec.go.jp

### [Related Information](#)



[Enlarge Image](#)

#### [MR09-01 Leg2](#)

Ship Name: MIRAI

Period: 2009-05-21 - 2009-06-19

Chief Scientist: Hiroshi Uchida (JAMSTEC)

Project Name: [POST-WOCE Hydrography, South Pacific Ocean Research Activity 2009]

### [Update History](#)

2017-04-11	An observation data was registered.
2012-12-06	An observation data was registered.
2012-09-28	An observation data was registered.

JAMSTEC  
Site Policy  
Privacy Policy  
Application for Data and Samples  
Data Policy  
  
What's New  
Update History  
Feeds

Lists  
Publication List  
Amount of Public Info.  
  
Data  
Map Search  
Data Tree  
Detailed Search

Information of the Ships  
NATSUSHIMA  
KAIYO  
YOKOSUKA  
MIRAI  
KAIREI  
CHIKYU  
KAIMEI  
SHINSEI MARU  
HAKUHO MARU

Information of the Submersibles  
KAIKO  
SHINKAI 2000  
SHINKAI 6500  
DEEP TOW  
HYPER-DOLPHIN  
URASHIMA  
YOKOSUKA DEEP TOW  
6K Camera DEEP TOW  
6K Sonar DEEP TOW  
KM-ROV  
POWER GRAB  
SAMPLER (SHELL)  
POWER GRAB  
SAMPLER (CLOW)  
BMS

Go to a Cruise Information

Cruise ID:

Go to a Dive Information

Dive ID:

Copyright 2011 Japan Agency for Marine-Earth Science and Technology



**JAMSTEC** 国立研究開発法人  
海洋研究開発機構  
JAPAN AGENCY FOR MARINE-EARTH SCIENCE AND TECHNOLOGY

## MIRAI MR09-01 Leg2 Shipboard Acoustic Doppler Current Profiler (ADCP)

Last Modified: 2017-04-11

[ReadMe](#) [Observation Data](#)

Cruise ID: [MR09-01 Leg2](#)

Shipboard Acoustic Doppler Current Profiler (ADCP): Processed (PI)

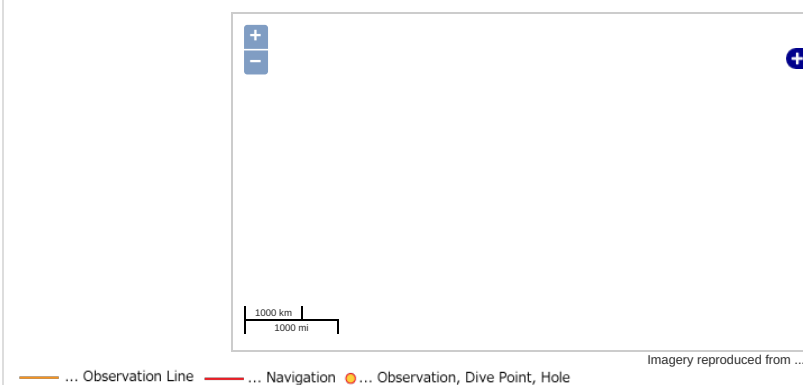
Data Policy: [JAMSTEC](#)

Observation Items: zonal velocity, meridional velocity

Science Keywords:

OCEANS > OCEAN CIRCULATION > OCEAN CURRENTS

### Observation Map



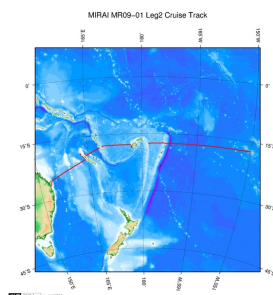
### Data List

☐ File names

☐ adcp\_a.txt

☐ adcp\_min.txt

### Related Information



[Enlarge Image](#)

#### MR09-01 Leg2

Ship Name: MIRAI

Period: 2009-05-21 - 2009-06-19

Chief Scientist: Hiroshi Uchida (JAMSTEC)

Project Name: [POST-WOCE Hydrography, South Pacific Ocean Research Activity 2009]

### Update History

2017-04-11	An observation data was registered.
2012-12-06	An observation data was registered.
2012-09-28	An observation data was registered.

#### JAMSTEC

[Site Policy](#)  
[Privacy Policy](#)  
[Application for Data and Samples](#)  
[Data Policy](#)  
[What's New](#)  
[Update History](#)  
[Feeds](#)

#### Lists

[Publication List](#)  
[Amount of Public Info.](#)  
  
[Data](#)  
[Map Search](#)  
[Data Tree](#)  
[Detailed Search](#)

#### Information of the Ships

[NATSUSHIMA](#)  
[KAIYO](#)  
[YOKOSUKA](#)  
[MIRAI](#)  
[KAIREI](#)  
[CHIKYU](#)  
[KAIMEI](#)  
[SHINSEI MARU](#)  
[HAKUHO MARU](#)

#### Information of the Submersibles

[KAIKO](#)  
[SHINKAI 2000](#)  
[SHINKAI 6500](#)  
[DEEP TOW](#)  
[HYPER-DOLPHIN](#)  
[URASHIMA](#)  
[YOKOSUKA DEEP TOW](#)  
[6K Camera DEEP TOW](#)  
[6K Sonar DEEP TOW](#)  
[KM-ROV](#)  
[POWER GRAB SAMPLER \(SHELL\)](#)  
[POWER GRAB SAMPLER \(CLOW\)](#)  
[BMS](#)

#### Go to a Cruise Information

Cruise ID:

#### Go to a Dive Information

Dive ID: