

KAIREI KR11-11 CTD

Last Modified: 2014-02-28

[ReadMe](#) [Observation Data](#)

Cruise ID: [KR11-11](#)

CTD: Processed (PI)

Data Policy: [JAMSTEC](#)

Observation Items:

Science Keywords:

Data Information

CTD profiles in the Ogasawara Trench and that above the abyssal plain adjacent to the Ogasawara trench.

Cruise Report

http://www.godac.jamstec.go.jp/catalog/data/doc_catalog/media/KR11-11_all.pdf

For Using Data

Principal Investigator

Takuro Nunoura (JAMSTEC)

Use Constraints

See [Terms and Conditions](#) about constrain of use.

Data Citation

See [Terms and Conditions](#) about data citation.

Instrument

Instrument:

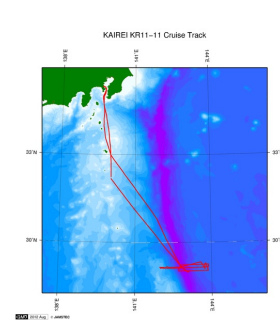
CTD SBE49

Instrument Information:

ROV ABISMO and 10K lander system



Related Information



[Enlarge Image](#)

KR11-11

Ship Name: KAIREI

Period: 2011-12-08 - 2011-12-14

Chief Scientist: Takuro Nunoura (JAMSTEC)

Proposal Expedition for Trench Biosphere - Microbiological and geochemical investigation for the
Title: Ogasawara Trench-

Update History

2014-02-28 An observation data was registered.

JAMSTEC

[Site Policy](#)
[Privacy Policy](#)
[Application for Data and Samples](#)
[Data Policy](#)

[What's New](#)
[Update History](#)
[Feeds](#)

Lists

[Publication List](#)
[Amount of Public Info.](#)

Data

[Map Search](#)
[Data Tree](#)
[Detailed Search](#)

Information of the Ships

[NATSUSHIMA](#)
[KAIYO](#)
[YOKOSUKA](#)
[MIRAI](#)
[KAIREI](#)
[CHIKYU](#)
[KAIMEI](#)
[SHINSEI MARU](#)
[HAKUHO MARU](#)

Information of the Submersibles

[KAIKO](#)
[SHINKAI 2000](#)
[SHINKAI 6500](#)
[DEEP TOW](#)
[HYPER-DOLPHIN](#)
[URASHIMA](#)
[YOKOSUKA DEEP TOW](#)
[6K Camera DEEP TOW](#)
[6K Sonar DEEP TOW](#)
[KM-ROV](#)
[POWER GRAB SAMPLER \(SHELL\)](#)
[POWER GRAB SAMPLER \(CLOW\)](#)
[BMS](#)

Go to a Cruise Information

Cruise ID:

Go to a Dive Information

Dive ID:

KAIREI KR11-11 CTD

Last Modified: 2014-02-28

[ReadMe](#) [Observation Data](#)

Cruise ID: **KR11-11**

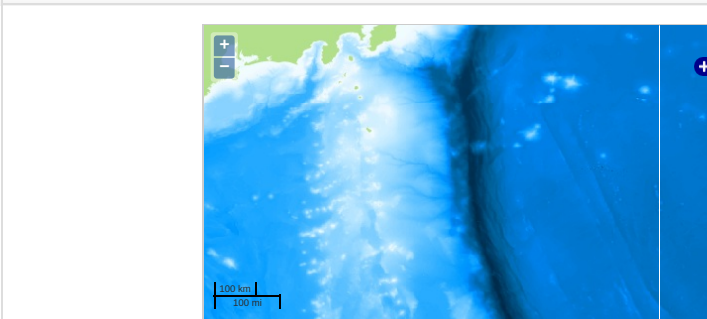
CTD: Processed (PI)

Data Policy: [JAMSTEC](#)

Observation Items:

Science Keywords:

Observation Map



— ... Observation Line — ... Navigation ● ... Observation, Dive Point, Hole

Imagery reproduced from ...

Data List

[Add to Basket](#)

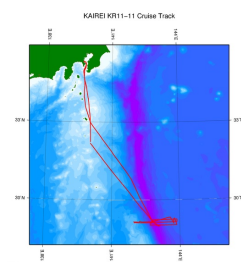
☐ File names

☐ KR11-11_1211.xls

☐ KR11-11_1212.xls

☐ Lander CTD.xls

Related Information



[Enlarge Image](#)

KR11-11

Ship Name: KAIREI

Period: 2011-12-08 - 2011-12-14

Chief Scientist: Takuro Nunoura (JAMSTEC)

Proposal Expedition for Trench Biosphere - Microbiological and geochemical investigation for the

Title: Ogasawara Trench-

Update History

2014-02-28

An observation data was registered.

JAMSTEC

[Site Policy](#)

[Privacy Policy](#)

[Application for Data and Samples](#)

[Data Policy](#)

[What's New](#)

[Update History](#)

[Feeds](#)

Lists

[Publication List](#)

[Amount of Public Info.](#)

Data

[Map Search](#)

[Data Tree](#)

[Detailed Search](#)

Information of the Ships

[NATSUSHIMA](#)

[KAIYO](#)

[YOKOSUKA](#)

[MIRAI](#)

[KAIREI](#)

[CHIKYU](#)

[KAIMEI](#)

[SHINSEI MARU](#)

[HAKUHO MARU](#)

Information of the Submersibles

[KAIKO](#)

[SHINKAI 2000](#)

[SHINKAI 6500](#)

[DEEP TOW](#)

[HYPER-DOLPHIN](#)

[URASHIMA](#)

[YOKOSUKA DEEP TOW](#)

[6K Camera DEEP TOW](#)

[6K Sonar DEEP TOW](#)

[KM-ROV](#)

[POWER GRAB SAMPLER \(SHELL\)](#)

[POWER GRAB SAMPLER \(CLOW\)](#)

[BMS](#)

Go to a Cruise Information

Cruise ID:

Go to a Dive Information

Dive ID:

