

MIRAI MR15-04 Radiosonde

Last Modified: 2017-10-31

[ReadMe](#) [Observation Data](#)

Cruise ID: [MR15-04](#)

Radiosonde: Processed (PI)

Data Policy: [JAMSTEC](#)

Observation Items:

Science Keywords:

Data Information

Radiosonde sounding data for the comparison of Vaisala radiosondes. The comparison observations were performed by using RS92-SGPD with the receiving system MW31 on the aft wheelhouse and RS41-SGP with the existing receiving system MW41 on R/V Mirai. Because older version 3.61 of DigiCORA software was used during the cruises, all RS92 sounding data were simulated with DigiCORA v3.64 after the cruises.

Cruise Report

http://www.godac.jamstec.go.jp/catalog/data/doc_catalog/media/MR15-04_all.pdf

For Using Data

Principal Investigator

Masaki Katsumata (Research and Development Center for Global Change)

-

JAMSTEC / BPPT joint cruise in the Indonesian waters.

Use Constraints

None

Data Citation

Refer to the following paper about details of the observation and the results of comparison of radiosondes.

Kawai, Y., M. Katsumata, K. Oshima, M. E. Hori and J. Inoue: Comparison of Vaisala radiosondes RS41 and RS92 launched over the oceans from the Arctic to the tropics, Atmospheric Measurement Techniques, 10, 2485-2498, doi:10.5194/amt-10-2485-2017, 2017.

Instrument

Instrument:

Radiosonde receiving system (Vaisala

MW31)

Instrument Information:

Receiver (SPS311), Software

(DigiCORA v3.64), UHF antenna

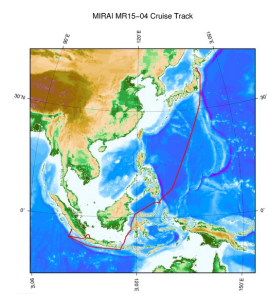
(RM32), GPS antenna (GA31)



Data Format

Text format. See the header of the data files for more details.

Related Information



[Enlarge Image](#)

MR15-04

Ship Name: MIRAI

Period: 2015-11-05 - 2015-12-20

Chief Scientist: Masaki Katsumata (JAMSTEC)

Proposal ▶ Observational study of the heavy rain zone in the tropical eastern Indian ocean

Title:

Update History

2017-10-31 An observation data was registered.

JAMSTEC

[Site Policy](#)

[Privacy Policy](#)

[Application for Data and Samples](#)

[Data Policy](#)

What's New

[Update History](#)

[Feeds](#)

Lists

[Publication List](#)

[Amount of Public Info.](#)

Data

[Map Search](#)

[Data Tree](#)

[Detailed Search](#)

Information of the Ships

[NATSUSHIMA](#)

[KAIYO](#)

[YOKOSUKA](#)

[MIRAI](#)

[KAIREI](#)

[CHIKYU](#)

[KAIMEI](#)

[SHINSEI MARU](#)

Information of the Submersibles

[KAIKO](#)

[SHINKAI 2000](#)

[SHINKAI 6500](#)

[DEEP TOW](#)

[HYPER-DOLPHIN](#)

[URASHIMA](#)

[YOKOSUKA DEEP TOW](#)

[6K Camera DEEP TOW](#)

Go to a Cruise Information

Cruise ID:

Go to a Dive Information

Dive ID:

HAKUHO MARU

6K Sonar DEEP TOW

KM-ROV

POWER GRAB SAMPLER
(SHELL)

POWER GRAB SAMPLER
(CLOW)

BMS

Copyright 2011 Japan Agency for Marine-Earth Science and
Technology



JAMSTEC

国立研究開発法人
海洋研究開発機構
JAPAN AGENCY FOR MARINE EARTH SCIENCE AND TECHNOLOGY

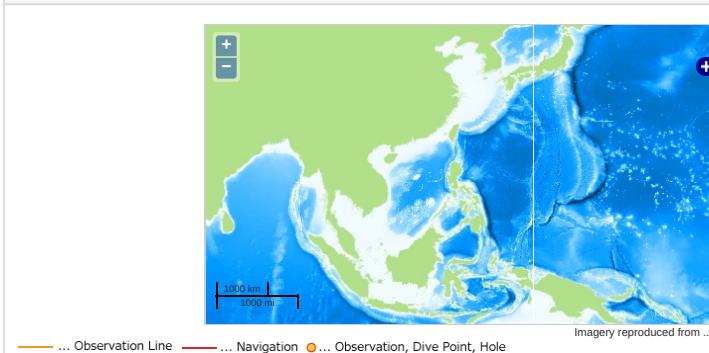
MIRAI MR15-04 Radiosonde

Last Modified: 2017-10-31

[ReadMe](#) [Observation Data](#)

Cruise ID: **MR15-04**
Radiosonde: Processed (PI)
Data Policy: [JAMSTEC](#)
Observation Items:
Science Keywords:

Observation Map

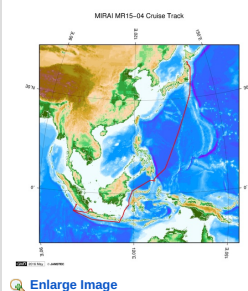


Data List

[Add to Basket](#)

File names
<input type="checkbox"/> 20151110_0538UTC_RS92_DigiCORA3.64.txt
<input type="checkbox"/> 20151111_0539UTC_RS92_DigiCORA3.64.txt
<input type="checkbox"/> 20151130_0829UTC_RS92_DigiCORA3.64.txt
<input type="checkbox"/> 20151201_0530UTC_RS92_DigiCORA3.64.txt
<input type="checkbox"/> 20151203_0529UTC_RS92_DigiCORA3.64.txt
<input type="checkbox"/> 20151205_0230UTC_RS92_DigiCORA3.64.txt
<input type="checkbox"/> 20151205_1745UTC_RS92_DigiCORA3.64.txt
<input type="checkbox"/> 20151206_2026UTC_RS92_DigiCORA3.64.txt
<input type="checkbox"/> 20151208_1429UTC_RS92_DigiCORA3.64.txt
<input type="checkbox"/> 20151209_0228UTC_RS92_DigiCORA3.64.txt
<input type="checkbox"/> 20151210_1727UTC_RS92_DigiCORA3.64.txt
<input type="checkbox"/> 20151211_1420UTC_RS92_DigiCORA3.64.txt
<input type="checkbox"/> 20151213_2028UTC_RS92_DigiCORA3.64.txt
<input type="checkbox"/> 20151215_0528UTC_RS92_DigiCORA3.64.txt
<input type="checkbox"/> 20151216_0250UTC_RS92_DigiCORA3.64.txt
<input type="checkbox"/> 20151216_1422UTC_RS92_DigiCORA3.64.txt
<input type="checkbox"/> 20151217_0528UTC_RS92_DigiCORA3.64.txt
<input type="checkbox"/> 20151217_2027UTC_RS92_DigiCORA3.64.txt

Related Information



MR15-04
Ship Name: MIRAI
Period: 2015-11-05 - 2015-12-20
Chief Scientist: Masaki Katsumata (JAMSTEC)
Proposal ▶ Observational study of the heavy rain zone in the tropical eastern Indian ocean
Title:

Update History

2017-10-31 An observation data was registered.

JAMSTEC
Site Policy
Privacy Policy
Application for Data and Samples
Data Policy
What's New
Update History
Feeds

Lists
Publication List
Amount of Public Info.
Data
Map Search
Data Tree
Detailed Search

Information of the Ships
NATSUSHIMA
KAIYO
YOKOSUKA
MIRAI
KAIREI
CHIKYU
KAIMEI
SHINSEI MARU
HAKUHO MARU

Information of the Submersibles
KAIKO
SHINKAI 2000
SHINKAI 6500
DEEP TOW
HYPER-DOLPHIN
URASHIMA
YOKOSUKA DEEP TOW
6K Camera DEEP TOW
6K Sonar DEEP TOW
KM-ROV
POWER GRAB SAMPLER (SHELL)
POWER GRAB SAMPLER

Go to a Cruise Information

Cruise ID:

Go to a Dive Information

Dive ID:

