

## MIRAI MR11-08 Leg2 Bathymetry (MBES)

Last Modified: 2017-04-11

ReadMe

Observation  
Data

Cruise ID: [MR11-08 Leg2](#)

Bathymetry (MBES): Processed (PI)

Data Policy: [JAMSTEC](#)

Observation Items: Depth

Science Keywords:

OCEANS > BATHYMETRY/SEAFLOOR TOPOGRAPHY > BATHYMETRY  
SOLID EARTH > GEOMORPHOLOGY

Cruise Report

[http://www.godac.jamstec.go.jp/catalog/data/doc\\_catalog/media/MR11-08\\_leg1-3\\_all.pdf](http://www.godac.jamstec.go.jp/catalog/data/doc_catalog/media/MR11-08_leg1-3_all.pdf)

### For Using Data

#### Principal Investigator

Takeshi Matsumoto (University of the Ryukyus)  
Naoto Hirano (Tohoku University)

#### Use Constraints

See [Terms and Conditions](#) about constrain of use.

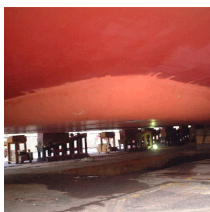
#### Data Citation

See [Terms and Conditions](#) about data citation.

### Instrument

Instrument:

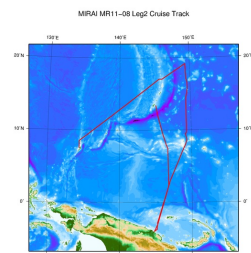
Multi-narrow beam echo sounder ( -  
MR12-E01)



### Overview

Please see the [Data book](#) for details of data.

### Related Information



[Enlarge Image](#)

#### MR11-08 Leg2

Ship Name: MIRAI  
Period: 2011-12-20 - 2012-01-12  
Chief Scientist: Akihiko Murata (JAMSTEC)  
Project Name: [POST-WOCE Hydrography]

### Update History

2017-04-11	An observation data was registered.
2014-04-30	An observation data was registered.
2012-09-28	An observation data was registered.

### JAMSTEC

Site Policy  
Privacy Policy  
Application for Data and Samples  
Data Policy

### What's New

Update History  
Feeds

### Lists

Publication List  
Amount of Public Info.

### Data

Map Search  
Data Tree  
Detailed Search

### Information of the Ships

NATSUSHIMA  
KAIYO  
YOKOSUKA  
MIRAI  
KAIREI  
CHIKYU  
KAIMEI  
SHINSEI MARU  
HAKUHO MARU

### Information of the Submersibles

KAIKO  
SHINKAI 2000  
SHINKAI 6500  
DEEP TOW  
HYPER-DOLPHIN  
URASHIMA  
YOKOSUKA DEEP TOW  
6K Camera DEEP TOW  
6K Sonar DEEP TOW  
KM-ROV  
POWER GRAB  
SAMPLER (SHELL)  
POWER GRAB  
SAMPLER (CLOW)  
BMS

### Go to a Cruise Information

Cruise ID:  Go

### Go to a Dive Information

Dive ID:   Go

## MIRAI MR11-08 Leg2 Bathymetry (MBES)

Last Modified: 2017-04-11

[ReadMe](#) [Observation Data](#)

Cruise ID: [MR11-08 Leg2](#)

Bathymetry (MBES): Processed (PI)

Data Policy: [JAMSTEC](#)

Observation Items: Depth

Science Keywords:

OCEANS > BATHYMETRY/SEAFLOOR TOPOGRAPHY > BATHYMETRY  
SOLID EARTH > GEOMORPHOLOGY

### Cruise Report

[http://www.godac.jamstec.go.jp/catalog/data/doc\\_catalog/media/MR11-08\\_leg1-3\\_all.pdf](http://www.godac.jamstec.go.jp/catalog/data/doc_catalog/media/MR11-08_leg1-3_all.pdf)

### For Using Data

#### Principal Investigator

Takeshi Matsumoto (University of the Ryukyus)  
Naoto Hirano (Tohoku University)

#### Use Constraints

See [Terms and Conditions](#) about constrain of use.

#### Data Citation

See [Terms and Conditions](#) about data citation.

### Instrument

Instrument:

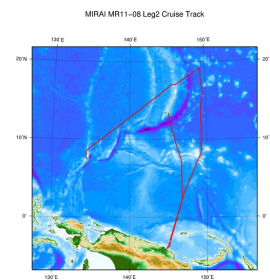
Multi-narrow beam echo sounder ( -  
MR12-E01)



### Overview

Please see the [Data book](#) for details of data.

### Related Information



© 2012 JAMSTEC

[Enlarge Image](#)

#### MR11-08 Leg2

Ship Name: MIRAI  
Period: 2011-12-20 - 2012-01-12  
Chief Scientist: Akihiko Murata (JAMSTEC)  
Project Name: [POST-WOCE Hydrography]

### Update History

2017-04-11	An observation data was registerd.
2014-04-30	An observation data was registerd.
2012-09-28	An observation data was registerd.

#### JAMSTEC

[Site Policy](#)  
[Privacy Policy](#)  
[Application for Data and Samples](#)  
[Data Policy](#)

#### What's New

[Update History](#)  
[Feeds](#)

#### Lists

[Publication List](#)  
[Amount of Public Info.](#)

#### Data

[Map Search](#)  
[Data Tree](#)  
[Detailed Search](#)

#### Information of the Ships

NATSUSHIMA  
KAIYO  
YOKOSUKA  
MIRAI  
KAIREI  
CHIKYU  
KAIMEI  
SHINSEI MARU  
HAKUHO MARU

#### Information of the Submersibles

KAIKO  
SHINKAI 2000  
SHINKAI 6500  
DEEP TOW  
HYPER-DOLPHIN  
URASHIMA  
YOKOSUKA DEEP TOW  
6K Camera DEEP TOW  
6K Sonar DEEP TOW  
KM-ROV  
POWER GRAB SAMPLER (SHELL)  
POWER GRAB SAMPLER (CLOW)  
BMS

#### Go to a Cruise Information

Cruise ID:

#### Go to a Dive Information

Dive ID:



## MIRAI MR11-08 Leg2 Bathymetry (MBES)

Last Modified: 2017-04-11

[ReadMe](#) [Observation Data](#)

Cruise ID: [MR11-08 Leg2](#)

Bathymetry (MBES): Processed (PI)

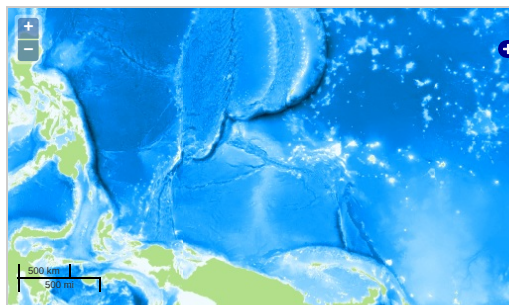
Data Policy: [JAMSTEC](#)

Observation Items: Depth

Science Keywords:

OCEANS > BATHYMETRY/SEAFLOOR > BATHYMETRY  
TOPOGRAPHY  
SOLID EARTH > GEOMORPHOLOGY

### Observation Map



Imagery reproduced from ...

... Observation Line ... Navigation ... Observation, Dive Point, Hole

### Data List

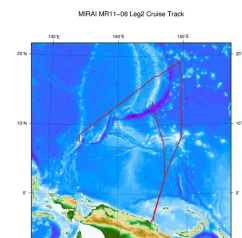
[Add to Basket](#)

☐ File names

☐ MR1108L2\_1\_150m\_Interp.grd

☐ MR1108L2\_2\_150m\_Interp.grd

### Related Information



[Enlarge Image](#)

#### MR11-08 Leg2

Ship Name: MIRAI  
Period: 2011-12-20 - 2012-01-12  
Chief Scientist: Akihiko Murata (JAMSTEC)  
Project Name: [POST-WOCE Hydrography]

### Update History

2017-04-11	An observation data was registered.
2014-04-30	An observation data was registered.
2012-09-28	An observation data was registered.

#### JAMSTEC

[Site Policy](#)  
[Privacy Policy](#)  
[Application for Data and Samples](#)  
[Data Policy](#)

[What's New](#)  
[Update History](#)  
[Feeds](#)

#### Lists

[Publication List](#)  
[Amount of Public Info.](#)  
[Data](#)  
[Map Search](#)  
[Data Tree](#)  
[Detailed Search](#)

#### Information of the Ships

[NATSUSHIMA](#)  
[KAIYO](#)  
[YOKOSUKA](#)  
[MIRAI](#)  
[KAIREI](#)  
[CHIKYU](#)  
[KAIMEI](#)  
[SHINSEI MARU](#)  
[HAKUHO MARU](#)

#### Information of the Submersibles

[KAIKO](#)  
[SHINKAI 2000](#)  
[SHINKAI 6500](#)  
[DEEP TOW](#)  
[HYPER-DOLPHIN](#)  
[URASHIMA](#)  
[YOKOSUKA DEEP TOW](#)  
[6K Camera DEEP TOW](#)  
[6K Sonar DEEP TOW](#)  
[KM-ROV](#)  
[POWER GRAB SAMPLER \(SHELL\)](#)  
[POWER GRAB SAMPLER \(CLOW\)](#)  
[BMS](#)

#### Go to a Cruise Information

Cruise ID:

#### Go to a Dive Information

Dive ID: