

## MIRAI MR05-04 Navigation

Last Modified: 2014-07-26

[ReadMe](#) [Observation Data](#) [Data Format](#)

Cruise ID: [MR05-04](#)

Navigation: Processed (DMO)-QCed

Data Policy: [JAMSTEC](#)

Observation Items:

Science Keywords:

### Cruise Report

[http://www.godac.jamstec.go.jp/catalog/data/doc\\_catalog/media/MR05-04\\_all.pdf](http://www.godac.jamstec.go.jp/catalog/data/doc_catalog/media/MR05-04_all.pdf)

#### For Using Data

##### Principal Investigator

Data Management Office

##### Use Constraints

See [Terms and Conditions](#) about constrain of use.

##### Data Citation

See [Terms and Conditions](#) about data citation.

### Instrument

Instrument:

Radio navigation system



### Overview

The following information is continuously collected and recorded as the Navigation QCed data during the cruise of R/V MIRAI.

Location  
Meteorological elements  
Surface temperature  
Current direction and velocity  
Water depth

Data are recorded every one minute, and data file named after cruise code.

### System

Manufacturer:SENA Co., Ltd.

Model: Sena Advanced Integrated Navigation System version 19 for MIRAI

Data format version 02.6

### Sensor specifications

#### 1)GPS receiver

Manufacturer:Leica Geosystems AG

Model: MX9400N

Location: Navigation deck [starboard side]

Output data: raw, NMEA

Manufacturer:Leica Geosystems AG

Model: MX9400N

Location: Navigation deck [port side]

Output data: raw, NMEA

Manufacturer:Trimble Navigation Limited

Model: 4000DS

Location: Navigation deck [starboard side]

Output data: NMEA

Manufacturer:Trimble Navigation Limited

Model: 4000DS

Location: Navigation deck [port side]

Output data: NMEA

#### 2)Doppler sonar

Manufacturer:FURUNO ELECTRIC CO., LTD.

Model: DS-30

Range: Ship speed: -10.00 - +40.00knot [Cross direction]

-9.99 - +9.99knot [Horizontal direction]

Current direction and speed: 0.0 - 9.9knot [All direction]

Accuracy: Current speed: +-(2.0%+0.2knot)

#### 3)Multi narrow beam echo sounder

Manufacturer:SEABEAM INSTRUMENTS

Model: Sea Beam 2112.004

Frequency: 12kHz

Range: 50 - 11000m

#### 4)Anemometer

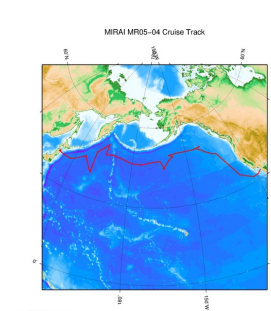
Manufacturer: Koshin Denki Kogyo Co., Ltd.  
Model: KE-500  
Altitude: 24m (above sea level)  
Starting wind speed:2m/s or less  
Durability: 90m/s  
Accuracy: 10m/s or less +/-0.5m/s  
10m/s or more +/-5%

#### Note

Please see the 'data set' and 'readme' for the detail of the following observation.

Air temperature: Meteorological data  
Sea surface temperature:EPCS/TSG  
Atmospheric pressure: Meteorological data  
Relative humidity: Meteorological data  
Water depth: Bathymetry  
Current direction/speed: ADCP

#### Related Information



[Enlarge Image](#)

#### MR05-04

Ship Name: MIRAI  
Period: 2005-09-13 - 2005-10-27  
Chief Scientist: Makio Honda (JAMSTEC)  
Project Name: [Station K2,Station KNOT]

#### Update History

|            |                                    |
|------------|------------------------------------|
| 2014-07-26 | An observation data was registerd. |
| 2012-11-25 | An observation data was registerd. |

#### JAMSTEC

[Site Policy](#)  
[Privacy Policy](#)  
[Application for Data and Samples](#)  
[Data Policy](#)

#### What's New

[Update History](#)  
[Feeds](#)

#### Lists

[Publication List](#)  
[Amount of Public Info.](#)

#### Data

[Map Search](#)  
[Data Tree](#)  
[Detailed Search](#)

#### Information of the Ships

[NATSUSHIMA](#)  
[KAIYO](#)  
[YOKOSUKA](#)  
[MIRAI](#)  
[KAIREI](#)  
[CHIKYU](#)  
[KAIMEI](#)  
[SHINSEI MARU](#)  
[HAKUHO MARU](#)

#### Information of the Submersibles

[KAIKO](#)  
[SHINKAI 2000](#)  
[SHINKAI 6500](#)  
[DEEP TOW](#)  
[HYPER-DOLPHIN](#)  
[URASHIMA](#)  
[YOKOSUKA DEEP TOW](#)  
[6K Camera DEEP TOW](#)  
[6K Sonar DEEP TOW](#)  
[KM-ROV](#)  
[POWER GRAB SAMPLER \(SHELL\)](#)  
[POWER GRAB SAMPLER \(CLOW\)](#)  
[BMS](#)

#### Go to a Cruise Information

Cruise ID:

#### Go to a Dive Information

Dive ID:

Copyright 2011 Japan Agency for Marine-Earth Science and Technology



**JAMSTEC** 国立研究開発法人  
海洋研究開発機構  
JAPAN AGENCY FOR MARINE-EARTH SCIENCE AND TECHNOLOGY

## MIRAI MR05-04 Navigation

Last Modified: 2014-07-26

[ReadMe](#)   [Observation Data](#)   [Data Format](#)

Cruise ID: **MR05-04**

Navigation: Processed (DMO)-QCed

Data Policy: **JAMSTEC**

### Navigation Qced

The one record of this data has 117 bytes of data part and 12 bytes of flag part.

Data part

| No. | Column    | Content                       | Format        | Unit            | Remarks  |
|-----|-----------|-------------------------------|---------------|-----------------|--|
| 1   | 1 - 8     | Date                          | i4,i2,i2      |                 | YYYYMMDD (UTC)   |
| 2   | 10 - 15   | Time                          | i2,i2,i2      |                 | hhmmss (UTC)   |
| 3   | 17 - 19   | Datum                         | a3            |                 | W84:WGS84<br>TD_:TOKYO DATUM   |
| 4   | 21 - 31   | Latitude                      | i2,x1,f7.4,a1 | degree - minute | dd-mm.mmmN(S)  |
| 5   | 33 - 44   | Longitude                     | i3,x1,f7.4,a1 | degree - minute | ddd-mm.mmmE(W)   |
| 6   | 46 - 49   | Ship speed (Ground)           | f4.1          | knot            |  |
| 7   | 51 - 55   | Course (Ground)               | f5.1          | degree          |  |
| 8   | 57 - 60   | Ship speed (Water)            | f4.1          | knot            | *1   |
| 9   | 62 - 66   | Gyro                          | f5.1          | degree          |  |
| 10  | 68 - 72   | Air temperature               | f5.1          | deg-C           |  |
| 11  | 74 - 78   | Sea surface temperature (SST) | f5.2          | deg-C           |  |
| 12  | 80 - 85   | Atmospheric pressure          | f6.1          | hPa             | Adjusted to the sea surface level  |
| 13  | 87 - 89   | Relative humidity             | i3            | %               |  |
| 14  | 91 - 93   | True wind direction           | i3            | degree          | Averaged over the previous 6 seconds *2                                    |
| 15  | 95 - 98   | True wind speed               | f4.1          | m/sec           | Averaged over the previous 6 seconds *2<br>No anemometer height adjustment |
| 16  | 100 - 106 | Depth                         | f7.1          | m               |  |
| 17  | 108 - 112 | Current direction             | f5.1          | degree          | Calculated value   |
| 18  | 114 - 117 | Current speed                 | f4.1          | knot            | Calculated value   |

Flag part

| No. | Column | Description | Format | Remarks   |
|-----|--------|-------------|--------|---|
| 19  | 119    | Flag 1      | i1     | QC flag for 'Latitude' and 'Longitude'              |
| 20  | 120    | Flag 2      | i1     | QC flag for 'Ship speed (Ground)'                   |
| 21  | 121    | Flag 3      | i1     | QC flag for 'Course (Ground)'                       |
| 22  | 122    | Flag 4      | i1     | QC flag for 'Ship speed (Water)'                    |
| 23  | 123    | Flag 5      | i1     | QC flag for 'Gyro'                                  |
| 24  | 124    | Flag 6      | i1     | QC flag for 'Air temperature'                       |
| 25  | 125    | Flag 7      | i1     | QC flag for 'Sea Surface Temperature (SST)'         |
| 26  | 126    | Flag 8      | i1     | QC flag for 'Atmospheric pressure'                  |
| 27  | 127    | Flag 9      | i1     | QC flag for 'Relative humidity'                     |
| 28  | 128    | Flag 10     | i1     | QC flag for 'Wind direction' and 'Wind speed'       |
| 29  | 129    | Flag 11     | i1     | QC flag for 'Depth'                                 |
| 30  | 130    | Flag 12     | i1     | QC flag for 'Current direction' and 'Current speed' |

\*1 The plus and minus sign of No.8 [Ship speed (Water)] about R/V KAIREI indicates the velocity of direction of a bow and stem.

\*2 No.14 [True wind direction] and No.15 [True wind speed] about R/V SHINSEI MARU are instantaneous value.

\* The terminator of each record is 'CR+LF' code.

\* Missing value and format error value are filled with '9'.

#### Definition of Quality Control Flags

##### Flag 1 : Longitude and Latitude

- 1 - accepted
- 2 - questionable value
- 4 - failed in location check
- 9 - system error or input error

##### Flag 2 : Ship speed (ground)

- 1 - accepted
- 2 - questionable value
- 4 - failed range check (under 20 knots)
- 9 - system error or input error

##### Flag 3 : Course (ground)

- 1 - accepted
- 2 - questionable value
- 4 - failed range check (0 ~ 360 degree)
- 9 - system error or input error

##### Flag 4 : Ship speed (water)

- 1 - accepted
- 4 - failed range check (under 20 knots)
- 9 - system error or input error

9 - system error or input error

Flag 5 : Gyro

- 1 - accepted
- 4 - failed range check (0 ~ 360 degree)
- 9 - system error or input error

Flag 6 : Air temperature

- 3 - assumed good\*
- 4 - failed range check (-20 ~ 40 degC)
- 9 - system error or input error

Flag 7 : Sea surface temperature

- 3 - assumed good\*
- 4 - failed range check (-3 ~ 37 degC)
- 9 - system error or input error

Flag 8 : Atmospheric pressure

- 3 - assumed good\*
- 4 - failed range check (890 ~ 1040 hPa)
- 9 - system error or input error

Flag 9 : Relative humidity

- 3 - assumed good\*
- 4 - failed range check (0 ~ 100 %)
- 9 - system error or input error

Flag 10 : Wind direction and wind speed

- 3 - assumed good\*
- 4 - failed range check (0 ~ 360 degree : wind direction, 0 ~ 60 m/s : wind speed)
- 9 - system error or input error

Flag 11 : Depth

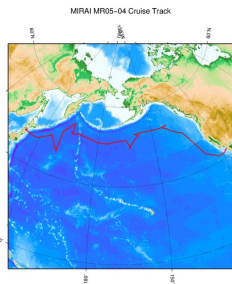
- 3 - assumed good\*
- 4 - failed range check (4 ~ 11000 m)
- 9 - system error or input error

Flag 12 : Current direction and current speed

- 3 - assumed good\*
- 4 - failed range check (0 ~ 360 degree : current direction, 0 ~ 5 knots : current speed)
- 9 - system error or input error

\* 'assumed good' means that this data passed range check but may contains leap or inappropriate zero.

## Related Information



2005 09/13 - 10/27

[Enlarge Image](#)

### MR05-04

Ship Name: MIRAI  
Period: 2005-09-13 - 2005-10-27  
Chief Scientist: Makio Honda (JAMSTEC)  
Project Name: [Station K2, Station KNOT]

## Update History

|            |                                    |
|------------|------------------------------------|
| 2014-07-26 | An observation data was registerd. |
| 2012-11-25 | An observation data was registerd. |

### JAMSTEC

[Site Policy](#)  
[Privacy Policy](#)  
[Application for Data and Samples](#)  
[Data Policy](#)

[What's New](#)  
[Update History](#)  
[Feeds](#)

[Lists](#)  
[Publication List](#)  
[Amount of Public Info.](#)

[Data](#)  
[Map Search](#)  
[Data Tree](#)  
[Detailed Search](#)

### Information of the Ships

[NATSUSHIMA](#)  
[KAIYO](#)  
[YOKOSUKA](#)  
[MIRAI](#)  
[KAIREI](#)  
[CHIKYU](#)  
[KAIMEI](#)  
[SHINSEI MARU](#)  
[HAKUHO MARU](#)

### Information of the Submersibles

[KAIKO](#)  
[SHINKAI 2000](#)  
[SHINKAI 6500](#)  
[DEEP TOW](#)  
[HYPER-DOLPHIN](#)  
[URASHIMA](#)  
[YOKOSUKA DEEP TOW](#)  
[6K Camera DEEP TOW](#)  
[6K Sonar DEEP TOW](#)  
[KM-ROV](#)  
[POWER GRAB SAMPLER \(SHELL\)](#)  
[POWER GRAB SAMPLER \(CLOW\)](#)  
[BMS](#)

### Go to a Cruise Information

Cruise ID:

### Go to a Dive Information

Dive ID:



## MIRAI MR05-04 Navigation

Last Modified: 2014-07-26

[ReadMe](#) [Observation Data](#) [Data Format](#)

Cruise ID: **MR05-04**

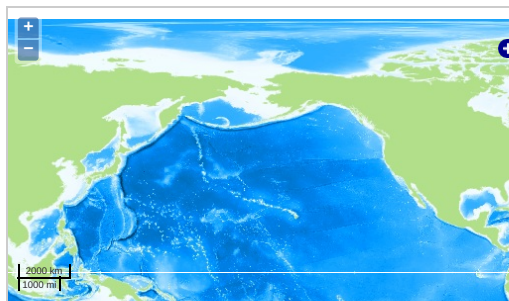
Navigation: Processed (DMO)-QCed

Data Policy: [JAMSTEC](#)

Observation Items:

Science Keywords:

### Observation Map

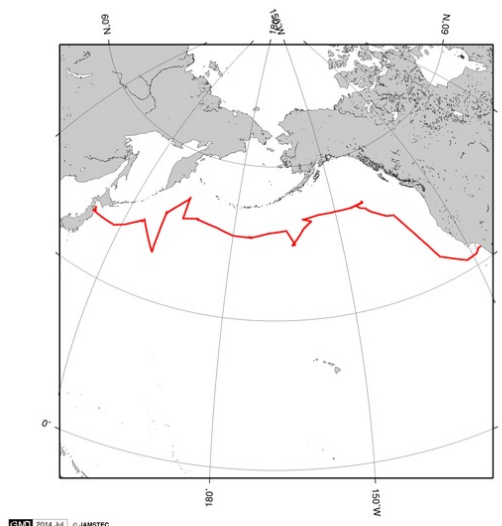


... Observation Line ... Navigation ... Observation, Dive Point, Hole

Imagery reproduced from ...

### Figures

MR05-04: Navigation



GMT 2014.3.6 © JAMSTEC

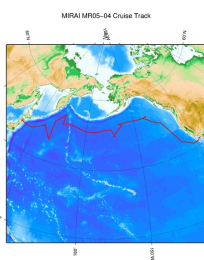
### Data List

[Add to Basket](#)

File names

☐ MR05-04.dat

### Related Information



GMT 2014.3.6 © JAMSTEC

[Enlarge Image](#)

#### MR05-04

Ship Name: MIRAI

Period: 2005-09-13 - 2005-10-27

Chief Scientist: Makio Honda (JAMSTEC)

Project Name: [Station K2, Station KNOT]

### Update History

|            |                                     |
|------------|-------------------------------------|
| 2014-07-26 | An observation data was registered. |
| 2012-11-25 | An observation data was registered. |

JAMSTEC

Site Policy  
Privacy Policy  
Application for Data and Samples  
Data Policy

What's New

Update History  
Feeds

Lists

Publication List  
Amount of Public Info.

Data

Map Search  
Data Tree  
Detailed Search

Information of the Ships

NATSUSHIMA  
KAIYO  
YOKOSUKA  
MIRAI  
KAIREI  
CHIKYU  
KAIMEI  
SHINSEI MARU  
HAKUHO MARU

Information of the Submersibles

KAIKO  
SHINKAI 2000  
SHINKAI 6500  
DEEP TOW  
HYPER-DOLPHIN  
URASHIMA  
YOKOSUKA DEEP TOW  
6K Camera DEEP TOW  
6K Sonar DEEP TOW  
KM-ROV  
POWER GRAB SAMPLER (SHELL)  
POWER GRAB SAMPLER (CLOW)  
BMS

Go to a Cruise Information

Cruise ID:

Go to a Dive Information

Dive ID:

